

Central
Bedfordshire

great
lifestyles



Supported Housing for older people

Welcome to independent living
With Central Bedfordshire Council.

A great place to live and work.

Find us online



www.centralbedfordshire.gov.uk/sheltered

Supported housing for older people

Independent living

Moving to supported housing accommodation is a great option for older people. Central Bedfordshire offers a number of supported housing schemes which enable you to live independently whilst enjoying the security and reassurance of having someone on-site during office hours to help if you need them.

Central Bedfordshire Council prides itself on having a Supported Housing Officer who ensures your welfare is top priority.

The schemes are generally available to people over the age of 55. Allocation of all housing is now carried out via a system called Choice Based Lettings (CBL) this is a system of advertising vacant properties where people who are registered can bid for vacant properties advertised.

For more information on how to apply go to Bedfordshire Home finder website at www.bedfordshirehomefinder.co.uk to download an application form. Alternatively you can email services@centralbedfordshire.gov.uk



Why our residents love supported housing for older people

“For my late years I made the best choice to live in sheltered accommodation. I have found friends and social interaction – I made the best decision.” **Mrs I**

“I feel safe having the Lifeline connection, knowing I can contact someone in a emergency” **Mrs P**

Your Supported Housing Officer- ‘Your welfare, our top priority’

The Council’s role is to help people stay independent for longer in their own homes.

Your Supported Housing Officer is there to make sure that you can live as independently and comfortably as possible. The officer will provide support to you on a daily basis through personal daily visits five times week. These checks are not only carried out to make sure you are ok but also to assist you to complete forms, arrange appointments or help you make contact with other organisations or people if you need assistance from them e.g. social care.

The Supported Housing Officer is available 08.30 to 5pm, Monday to Thursday and 4:30 on Fridays.

What does it look like? What are the benefits?

Most of our supported housing schemes offer the following accommodation types and benefits. Individual Supported Housing Officers will be able to advise what is provided on their individual schemes.

Accommodation – ‘Your private space’

All our supported housing schemes offer the following accommodation:

Self contained flats

- one/two bedroom flats or bungalows
- living room
- modern kitchens
- bathrooms or level access showers
- some specially adapted flats for the disabled

Guest rooms

- In a number of schemes and for a small charge
- twin/double beds
 - toilet facilities
 - shower facilities

Supported housing for older people

Facilities

Most of our sheltered schemes have the following facilities

‘More than just a home’

Communal areas

- large lounge
- computer rooms
- landscaped gardens
- fully equipped kitchen
- fully equipped laundry
- gift and book clubs
- visiting library
- provision for disabled residents including wheel chair access to communal areas.
- scooter storage facilities
- lifts

‘Keeping you safe and secure’

Security

- alarm call system
- security via an entrance intercom system

‘A great place to live’

Social life

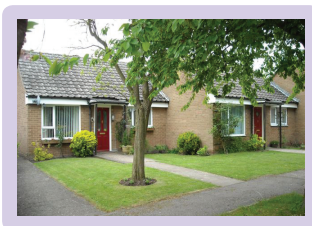
Most schemes have a large and varied social calendar but you won’t be forced to join in if you’d prefer not to. Examples of events include:

- film nights
- exercise classes
- weekly card games. Scrabble and Bingo
- pub lunches
- coffee mornings
- outings
- meetings

The schemes - Dunstable

Albert Court LU6 3SP

Albert Court is situated in Dunstable, this scheme consists of 23 self-contained properties in total. Albert Court is within easy walking distance of some local shops. Bus services into Dunstable town centre and Houghton Regis operate regularly as the scheme is located close to a bus route.



Ashcroft LU6 1DY

Ashcroft is situated on the Beecroft area of Dunstable, this scheme comprises of 14 self-contained bungalows. Ashcroft is situated on a main bus route with links into Dunstable and Houghton Regis. The nearest shops are located a few minutes walk away in Westfield Road where a general store and post office located.



Croft Green LU6 1EG

Croft Green scheme consists of 32 properties that comprise of 24 bungalows, 8 bedsits and 1 two bedroom flat all self contained. The scheme is located within a 10 minute walking distance from Dunstable town centre where there is a wide range of shops and local amenities. The scheme is served by good bus links to other towns such as Luton, Leighton Buzzard and Bedford.



The schemes - Dunstable cont.

Furness Avenue LU6 3BN

Furness Avenue is situated off Bullpond Lane close to Dunstable town centre. The scheme comprises of 45 one bedroom flats and two purpose built bungalows. This scheme is located very close to local shops in Langdale Road and the scheme has good bus links.



Holts Court LU6 1HR

Holts Court is located in the centre of Dunstable within a few minutes walk of the town centre shops. The scheme consists of 16 one bedroom self contained flats and is also served with good bus links to Luton, Houghton Regis and Leighton Buzzard



Kingsbury Court LU5 4ND

Kingsbury Court is situated in the centre of Dunstable. The scheme comprises of 25 properties comprising of 3 one bedroom flats and 22 two bedroom flats. Access to local amenities is very good due to the schemes central location and is also served well with good bus links.



Mayfield Road LU5 4AP

Mayfield Road is based within the Downside area of Dunstable and comprises of 24 one bedroom self contained bungalows. There are some local amenities located close by Mayfield Road and a bus stop is close by with links into Dunstable.



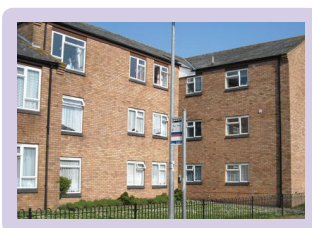
Saxon Close LU6 1TR

Saxon Close is situated in the Weatherby area of Dunstable. The scheme comprises of 24 properties in total all one bedroom self contained flats. There are a small number of shops located close to the scheme. Saxon Close is served very well by good bus links that operate frequently into Dunstable, Luton, Leighton Buzzard or Houghton Regis.



Southwood Road LU5 4EN

Southwood Road is located within the Downside area of Dunstable. The scheme comprises of 3 two bedroom flats and 21 one bedroom flats. There are some local amenities located close by in Mayfield Road and a bus stop is located close to the scheme with good links into Dunstable.



The schemes - Leighton Buzzard

Baker Street LU7 1BJ

Baker Street is located close to Leighton Buzzard town centre. The scheme comprises of 56 self contained flat units and there are a variety of shops all within walking distance. The scheme is served well by good bus links which are located on the high street near the scheme.



Bedford Street LU7 1JE

Bedford Street consists of 18 one bedroom flats, 12 one bedroom bungalows and 20 bed-sit bungalows, all self contained units. Access to local amenities is good with the scheme being situated within a 10 minute walk of Leighton Buzzard town centre.



Durrell Close LU7 2RU

Durrell Close is situated close to Leighton Buzzard town centre. The scheme consist of 36 one bedroom self contained flats and is served well by good bus and train links.



Finch Crescent LU7 2PF

Durrell Close is situated close to Leighton Buzzard town centre. The scheme consist of 36 one bedroom self contained flats and is served well by good bus and train links.



Richmond Road LU7 4RD

Richmond Road is based within the Stanbridge area of Leighton Buzzard And comprises of 31 properties made up of 26 one bedroom and 5 two bedroom bungalows. There are some local shops close to the scheme with the nearest shopping centre being Leighton Buzzard town centre. The scheme is served by good bus links that operates into Leighton Buzzard regularly.



Tudor Court LU7 1AQ

Tudor Court is situated in the centre of Leighton Buzzard in a cul-de-sac comprised of 54 properties all self contained flat type accommodation. The scheme is located close to shops and is served by good transport links to Dunstable.



The schemes - rural areas

Crescent Court LU5 6DY

Crescent Court is based in the rural village of Toddington Bedfordshire. The scheme consists of 21 self contained flats. The scheme is situated close to Toddington town centre where there is a good selection of shops. There is a bus stop located very close to the scheme with links to Dunstable and Houghton Regis.



Gale Court MK45 4LH

The scheme is located in the rural village of Barton-Le-Clay. The scheme consists of 24 self contained flats 3 of which are bedsit type accommodation and is located within a half mile walk of local shops. As bus stop is located very close to the scheme with good links to Luton and Bedford.



Manor Court LU1 4AE

Manor Court is based in the rural village of Caddington Bedfordshire. The scheme comprises of 21 self contained properties made up of 12 one bedroom flats, two 2 bedroom flats and 4 two bedroom bungalows. There is a small selection of local shops close to the scheme. This scheme is also served well by good bus links to Luton and Dunstable that operate regularly.



Supported Housing contact details

Our schemes are friendly and fun places to live which will ensure your welfare at all times whilst allowing you the independence you require.

For more information contact home finder
www.centralbedfordshire.gov.uk/shelteredhousing
Alternatively you can contact the following numbers:

Furness Avenue

01582 475740

Kingsbury Court

01582 605433

Richmond Road

01525 850506

Finch Crescent

01525 854754

Baker Street

01525 382427

Albert Court

01582 606290

Saxon Close

01582 476287

Crescent Court

01525 877302

Ashcroft Road

01582 814063

Holts Court

01582 476018

Tudor Court

01525 382399

Croft Green

01582 477962

Gale Court

01582 476287

Bedford Street

01525 374571

Durrell Close

01525 370346

Manor Court

01582 418690

Southwood Road

01582 475049

Mayfield Road

01582 476287

Central Bedfordshire Council

Supported Housing
Watling House
High Street North
Dunstable
Bedfordshire
LU6 1LF

Telephone

0300 300 8146

Central
Bedfordshire

great
lifestyles

Central Bedfordshire in contact

Find out more

For more information about this publication, further copies, or a large print copy, get in touch.

Please recycle me!

When finished with, please put me in your recycling bin or bag.



www.centralbedfordshire.gov.uk



www.facebook.com/letstalkcentral



[@letstalkcentral](https://twitter.com/letstalkcentral)



customers@centralbedfordshire.gov.uk



0300 300 8146