

# Appendix

## Community Plan

Covering the parishes of Eaton Bray,  
Studham, Hyde, Kensworth, Stanbridge,  
Billington, Tilsworth, Totternhoe,  
Slip End, Caddington, Whipsnade

### Community Area 1

## This Community Says...



# Appendix -Feedback Form

## Local character

**What we have we love. Our history, countryside and communities. We need to build, with care to enhance what we have.**

☐ NO ISSUES

Please select **one** type of Local Character from the list below that you would most like to see protected or improvements made within your local area:

- A. ☐ Built Heritage (e.g. ancient monuments, old buildings, memorials)
- B. ☐ Landscape Heritage (e.g. historic parks, protected landscapes)
- C. ☐ Open space natural (e.g. countryside, nature reserves, viewpoints)
- D. ☐ Open space man-made (e.g. parks, common land, village green)
- E. ☐ No improvements

With your chosen type of Local Character, please pin-point **one** specific place on the map table using your **red** sticker where you think there is an opportunity. Please expand below on what you would like to see at this location:

## Transport

**How do we get around? With more of us on our cycleways, roads, rail. How do we improve & maintain our transport links?**

☐ NO ISSUES

Please select **one** mode of travel from the list below that you would most like to see improvements made within your local area:

- A. ☐ Vehicular
- B. ☐ Bus
- C. ☐ Train
- D. ☐ Cycle
- E. ☐ On foot

With your chosen type of Transport from above, please pin-point **one** specific place on the map table using your **pink** sticker where you think there is an opportunity. Please expand below on what you would like to see at this location:

## Jobs and Business

**Where will everyone work? Supporting local businesses to grow & attracting new business. We need to create jobs for all.**

☐ NO ISSUES

Please select **one** type of Business from the list below that you would most like to see investment in to improve business or jobs in your local area:

- A. ☐ Industrial parks
- B. ☐ Business parks
- C. ☐ High street development
- D. ☐ Local retail units
- E. ☐ Small-start-up office centres (innovation hubs)

With your chosen type of Business from above, please pin-point **one** specific place on the map table using your **lime sticker** where you think there is an opportunity. Please expand below on what you would like to see at this location:

## Environment

**Our environment is important. It influences how & what we create.  
We need quality development.**

☐ NO ISSUES

Please select **one** of the Environment types from the list below that you consider the most valuable attribute to look after for the future within your local area:

- A. ☐ Renewable energy
- B. ☐ Pollution (Air)
- C. ☐ Pollution (Noise)
- D. ☐ Open Space - wildlife habitats
- E. ☐ Flood risk

With your chosen type of environmental issue from above, please pin-point **one** specific place on the map table using your **green** sticker where you think there is an opportunity. Please expand below on what you would like to see at this location:

## Homes

**Homes for every stage of life. A house is not a home until it's lived in. We all need a home we're proud of.**

☐ NO ISSUES

Please select **one** of the types of Homes from the list below that you consider are needed within your local area:

- A. ☐ Older generation (downsizing/sheltered)
- B. ☐ Single living (lifestyle/separation)
- C. ☐ New starter homes
- D. ☐ Family homes
- E. ☐ Affordable homes

With your chosen type of Home from above, please pin-point **one** specific place on the map table using your **purple** sticker where you think there is an opportunity. Please expand below on what you would like to see at this location:

## Growth & Infrastructure

**Where to place homes & services. Supporting market towns, villages & new settlements.  
We need to plan places to grow communities.**

☐ NO ISSUES

Please select **one** Infrastructure facility from the list below that you consider is most needed in your local area:

- A. ☐ Healthcare
- B. ☐ Schools
- C. ☐ Retail
- D. ☐ Community Centres
- E. ☐ Leisure facility (leisure centre, play areas etc.)
- F. ☐ Utilities improvements (telecoms/electricity/gas/foul treatment)

With your chosen type of Infrastructure from above, please pin-point **one** specific place on the map table using your **orange** sticker where you think there is an opportunity. Please expand below on what you would like to see at this location:

# Appendix - Feedback Form Summary

The following data for Community Area 1 was collected at the event held on Wednesday 22nd March 2017 at Studham Village Hall from 2:30pm until 7:30pm using questions from the feedback form illustrated on the previous page.

Feedback Form Summary						
Response	What would you most like to see protected or improvements made?	Local Character	What would you most like to see improvements made in?	Transport	Would most like to see investment in to improve business or jobs?	Jobs & Business
No Response		3		1		21
A	Built Heritage (e.g. ancient monuments, old buildings, memorials)	7.3	Vehicular	16	Industrial parks	1
B	Landscape Heritage (e.g. historic parks, protected landscapes)	8.6	Bus	33	Business parks	3
C	Open space natural (e.g. countryside, nature reserves, viewpoints)	32.6	Train	4	High street development	16
D	Open space man-made (e.g. parks, common land, village green)	14.6	Cycle	4	Local retail units	10
E	No improvements	0	On foot	8	Small-start-up office centres (innovation hubs)	12
F	No F question on this theme	0	No F question on this theme	0	No F question on this theme	0
Nothing Recorded		8		8		11
Total		74		74		74

	What do you consider the most valuable attribute to look after for the future?	Environment	Which you consider are needed the most?	Homes	Which you consider are needed the most?	Growth & Infrastructure
		4		6		6
	Renewable energy	5	Older generation (downsizing/sheltered)	15.5	Healthcare	15
	Pollution (Air)	8	Single living (lifestyle/separation)	0	Schools	6.5
	Pollution (Noise)	7	New starter homes	19.5	Retail	10
	Open Space - wildlife habitats	31	Family homes	12	Community Centres	1.5
	Flood risk	10	Affordable homes	11	Leisure facility (leisure centre, play areas etc.)	3
	No F question on this theme	0	No F question on this theme	0	Utilities improvements (telecoms/electricity/gas/foul treatment)	22
		9		10		10
		74		74		74

## Note

The public were instructed to only tick one category for each theme. Where an individual ticked more than one category, their choices are divided evenly across the categories.

## Local Character

**Question:** With your chosen type of Local Character, please pin-point **one** specific place on the map table using your **red** sticker where you think there is an opportunity. Please expand below on what you would like to see at this location:

Unable to choose just one.

Being a rural landscape, a site of scientific interest, with a common, village green and lots of woodland, all the items are important. We are also a Saxon village!

All areas of our countryside are equally as important as the other. The common is an AONB, a nature reserve for dormice and Gliss Gliss, has historic reference by the planting of Jubilee Copse in 1977 is where the children of the local school used at playtimes.

More public access through the Luton Hoo estate (and the hotel), it's a large area that the current managers have prohibited development of footpaths through.

I am keen countryside should not be built on where the character would be changed.

Maintain open natural landscapes as much as possible.

Area surrounding Kensworth Church

Maintain green divide between Dunstable and Totternhoe.

Keep green space between Totternhoe and Dunstable.

Landscape being destroyed with the river being polluted by sewerage.

I have chosen C, but A, B and D are each of importance to me and my family.

Protect AONB. Enlarge and improve graveyard.

The threat of 300 houses in Eaton Bray will have a serious effect on countryside unless brownfield sites are used first.

Keep all sites in Studham as they are.

Common preserved.

The common is the area that gives the village its character.

Green Belt. In particular arable land along A5.

Maintain the AONB and Green Belt and only allow small scale developments around settlements.

Make sure none of these are built on and support publicly with improvements/maintenance.

Continued maintenance of Totternhoe Knolls.

Establish a Parochial Council under Commons Act 2000 to democratize management of Whipsnade Green, focus on development of its use for local residents while preserving and protecting its essential character.

This needs to be preserved; historic interest, public rights of ways.

Countryside around Eaton Bray, views from Downs towards Eaton Bray, etc.

EATON BRAY We have a lot of Heritage Assets in the village. These should be protected AND PROTECT THE GREEN BELT.

Clear green space preventing coalescence between Caddington/Slip End and Luton.

Leighton Buzzard bypass from Gt Billington Parish.

Along bypass (Leighton Buzzard) north - from Gt Billington to Grove.

Absolutely nothing. This must be preserved.

Protection of Studham Common.

Studham is a small green village in AONB. I would like to see Studham retain its green nature and small village status. Any development should be small scale and sympathetic in nature. I would not welcome any development cluster of more than 5 homes.

Green belt and natural open spaces around all the villages is being eaten away by expansion of towns.

Central Bedfordshire benefits from a green attractive landscape within which our villages, towns and communities are located. These need to be protected and extended into our built environment - green links, pocket parks, parks.

We have common land and a green but we do need play equipment for younger people.

Open space is important for all ages. Play equipment.

Totternhoe Knolls and Green Lanes infrastructure.

Totternhoe Knolls.



## Transport

**Question:** With your chosen type of Transport, please pin-point **one** specific place on the map table using your **pink** sticker where you think there is an opportunity. Please expand below on what you would like to see at this location:

Bus needs to be available at the correct times to join up.

More buses at more convenient times.

Bus passes. Just as a note, over 70s need to reapply for a DL and may have medical issues which prevent this, so they have bus passes. Bus pass use is no longer a 'charged' ride (used to be 50p/journey) and their use is not logged. Perhaps this needs further thought.

Bus operators have been in conflict with Luton Airport, resulting in cessation of service direct to the terminal by local service buses.

CBC to ensure bus service continues for many years.

Footpaths, bridleways and cycle ways need to be maintained and expanded to encourage more people to get to exercise saving money for the National Health Service.

Existing footpaths and bridleways should be maintained and protected.

Upgrade bus rail to trains!

Protection of existing public footpaths.

Growing width in all lanes surrounding all villages Kensworth, Studham and Whipsnade.

Bus lanes to be added in Leighton Buzzard.

We would like to see the F70 bus re-routed along Dunstable West Street and through the village of Totternhoe to then rejoin the original route on the A505. Currently, the F70 joins the A505 after travelling along Dunstable High Street North, a route that is already well served by several buses. West Dunstable and Totternhoe are served by the 61 bus which runs only as far as Dunstable where a change of bus is required to travel on, as the 61 route operates at 1 1/2 or 2 hour intervals, missing your connection can result in a long wait, a long walk or a taxi. Re-routing would possibly extend the route time wise and cause slight inconvenience to some passengers who join the bus north of the town centre they would have to take one of the alternative buses currently available.

Re-route the F70 bus through Totternhoe or return the 61 bus to an hourly service.

Between Holywell and Studham village centre.

Poor bus service a major concern, but A, C, D, E are of concern and need improvement. Use of villages by commuters (cars) a major concern.

Roundabout.

Ageing population, limited shops and facilities mean increased demand for public transport.

Daily bus that intersects London train at 9.30 for 9.32 train and return to pick up at 4.30 London train (Leighton Buzzard station) - this will encourage the retired, students and non-working parents to use bus.

Urgent need for more carriages on trains, especially around rush hour times and including following morning peak times and before and after evening rush hour. Current trains are excessively crowded and each passenger should be able to expect a seat.

Existing road conditions poor.

Keep all roads in good repair.

Village to sports and social club.

As I live in Herts we do not want Central Beds to build on the nearby green belt land.

Better cycling facilities and law on cyclists being made to wear high viz jackets and better front and rear lights on all bicycles.

We need some means of lowering congestion in the centre of the village, and providing car parks.

Speed restrictions and pedestrian safety measures.

The traffic calming in Dunstable Road is dangerous and during rush hour I am concerned about pollution. Can the '70' bus come through Totternhoe?

Better, more frequent bus service. Using smaller vehicles. Pointless having 30+ seater once every 2 hours.

More buses serving rural areas for locals to attend doctors appointments and shopping for groceries, as well as getting to work in local towns.

Main road through Totternhoe (Dunstable Road - Castle Hill Road). Remove all obstructions (bollards) and reinstate cats' eyes and white lines. Regular weekly accidents since in place and increase in traffic speed.

Ensuring no further reduction in bus service and better time keeping.

Retain bus service from centre of Whipsnade Village to Dunstable (recent withdrawal of subsidies for rural services will have an adverse effect).

Improvements and upgrades around LB station. Better parking and pedestrian access.

I would like to see traffic calming as there appears to be a complete disregard for cyclists with many motorists using the village as a cut through.

Buses are rubbish! to/from Eaton Bray for commuting times and most other times.

Bus is terrible and needs to be improved.

Delivery of Heritage Greenway proposals.

Restriction on A4146 to Hemel Hempstead. Large lorries destroying flora and fauna.

Infrastructure - Leighton Buzzard/Dunstable and restriction in Leighton Buzzard/Hemel Road.

Traffic calming.

Studham is about to lose its bus service. This needs to be retained to benefit families and retired people.

Again across the whole area rat runs have developed due to congestion as main roads through area. Concerned that new M1 link will exacerbate this. Particularly bad around school and work hours - encourage flexible hours, working at home - better public transport so less cars.

Need to protect our community from increasing traffic through rat runs in resi estates, villages, etc. Measures to deter use of rat runs and direct traffic to main routes.

I would like to see a continued bus service in our village.

A village needs a bus service for all ages.

No. 70 bus route to include Totternhoe.

Divert traffic from local roads onto major through routes.

Restricting traffic from village.



## Jobs & Businesses

**Question:** With your chosen type of Business, please pin-point **one** specific place on the map table using your **lime sticker** where you think there is an opportunity. Please expand below on what you would like to see at this location:

None of the above.

Not a viable option - no broadband or mobile signal, a village shop would not be able to compete with supermarkets.

We are a rural village with no broadband or mobile service therefore none of the above are a suitable investment.

Job for a local land owner - Barwythe Hall?

Small businesses need to be encouraged and supported.

To develop on farms using barns for conversion.

Dunstable!!! E in local villages.

Innovation hub.

Post Office and/or job centre.

We have lost both post office and shop in our village. Now we have no retail units closer than our local town.

We do not require business in the village of Studham.

Not applicable because I live in Hertfordshire.

Improvement on general high street shopping - excluding any new restaurants.

Redundant farm buildings providing small office/retail accommodation.

All towns are expanding to provide more jobs but smaller office centres are needed on the outskirts to reduce traffic congestion but on a bus route. More opportunities to work from home with faster broadband in rural areas.

Help to keep younger people employed in Totternhoe without travelling too far.

Would be good to have some form of local shop in the village.

I'd like to see plenty of high quality business parks created near the new J11A.

Parking and traffic flow is really dangerous in High Street. This needs to be addressed first.

Possibly re-use old sites for employment local to village.

Too many charity shops and need

to open up High Street, Leighton Buzzard as through High Street and create more parking.

Leighton Buzzard High Street south - to include improvements, to incorporate from station to High Street (including canal and river).

Want to see organic small businesses. Growth on farms - only possible investment - but see broadband issues.

On farms.

Too many charity shops and new small businesses finding it hard to survive, several closed after only 1/2 years. Possible problems re: antisocial behaviour.

SME's are the biggest business growth area. Must provide support to these - better high speed broadband for example required everywhere.

Dunstable High Street needs great improvement.

Dunstable is dying on its feet.

A local store in the village.

Industry has been lost over the years - Bedford Trucks, etc. Industry parks in Dunstable area need to be developed to stop the area becoming a dormitory town.

Making full use of Dunstable High Street.



## Environment

**Question:** With your chosen type of environmental issue, please pin-point **one** specific place on the map table using your **green** sticker where you think there is an opportunity. Please expand below on what you would like to see at this location:

Protect existing environment for wildlife.

There is little flood risk, but there is room for improvement on air pollution from traffic on the "Rat Run", and both air and noise pollution from the airport. We have many varied wildlife areas that need protection.

Solar power is the way forward but do NOT want a 'solar farm' added in the area. Smaller structures on public buildings such as clubs and pubs.

Speeding traffic Dunstable Road can be heard for 2 miles distant if caused by sports/bikes/cars need enforced 30mph on all Dunstable Road.

Open spaces are vital for wildlife and encouraging youngsters to get out more.

Long term plan to ensure the Quarry is retained as important wildlife habitat. Possibility of wetlands - lakes.

Flight paths for aircraft coming in over the villages Kensworth, Studham.

Better control of motorcycles, etc. on Totternhoe Knolls.

Travellers site, no sewage, no mains water with site allowed to expand. Very weak Council control.

Studham Common.

Raw sewage overflows unacceptable as a result of flooding. A, B, C, D all important to me.

Less pollution from aircraft and burning of industrial waste.

Eaton Bray is built on water with 300 new houses and no infrastructure improvements - a problem!

Ensure housing permits joined up, not just isolated green space. Note 600 hectares removed already and more green space/belt removed to be replaced by isolated areas.

Protect all 3 commons in Studham.

I am against any further expansion of Luton Airport. Pollution (air and noise).

The airport makes an unacceptable noise in good weather and at night.

Flood risk.

Traffic calming to increasing pollution.

Pollution from Luton Airport (noise). Air pollution from increased traffic. Countryside very important. Pollution affects countryside. In other words, they are linked.

Reduction in heavy lorries using roads through villages, keep these lorries on the A roads. Pollution is high as lorries have to stop on village roads with engines running.

Maintain what we have re: green lanes and Totternhoe Knolls.

Continued maintenance of Totternhoe Knolls.

Expansion of Luton Airport to 30m passenger movements per annum will not be acceptable to residents living on the approach flight path to runway 08. Night flight limitations must be introduced at a minimum.

There should be more protection/preservation of orchards with their unique wildlife.

Would like to see renewable energy strategy, solar strategy and possibly wind/microgeneration.

Why have you not included GREEN BELT - the green belt should be protected. I THINK THIS SURVEY IS INADEQUATE IN RESPECT OF GREEN BELT. IF CBC ARE CONSIDERING ROLLING BACK GREEN BELT WHY HAVE YOU NOT CONSULTED ON IT?

Expansion of electricity generation at edge of Caddington.

From LB bypass through Gt Billington on A4146 to Hemel Hempstead - noise and pollution due to very heavy large trucks travelling at high speeds, not maintaining a 30mph limit. Dangerous hill.

Leighton Buzzard to Hemel Road through Gt Billington.

Nothing!! Keep as is.

Studham has a large number of green open spaces that need protecting.

Again across whole of area rural areas being eaten away - by expansion of towns.

If we use renewable energy the other issues should fall into place.

If pollution is kept low it should all fall in place.

Totternhoe Knolls and surrounding areas must be preserved.

Totternhoe Knolls.



## Homes

**Question:** With your chosen type of Home, please pin-point **one** specific place on the map table using your **purple sticker** where you think there is an opportunity. Please expand below on what you would like to see at this location:



Studham has a large amount of 4/5 bedroom houses and a number of people wish to remain in Studham and downsize.

There is a need for affordable housing here - and cheap enough to be affordable.

All homes in our lovely area should have a garden large enough for gardening and playing, space should also be available for parking of 2 cars on property.

Any development should cater for all members of the community, but lack of availability for key workers needed for social care in all its forms, and for commerce, must be addressed.

This would depend on whether a bus route is still available in later years.

What are affordable homes? Small starter homes are needed everywhere not large 5/6 bedroomed houses.

I was expecting to see proposals for comment, but I am too early. As a non-resident whose interest is the ROW network, I have not made any suggestions that local people should be dealing with.

Affordable homes - a small site in Stanbridge where I have put my sticker.

Releasing family homes by older generation going into (downsizing/ sheltered).

Along Dunstable Road.

C also of particular concern.

Affordable homes for villagers growing up, leaving home and wishing to remain in the village.

Ageing population - need smaller dwellings (bungalows).

Green belt has not permitted accommodation of families so cannot expand accordingly. No mention of G&T (travellers) so how can this be a community plan?

Affordable homes in the empty field between numbers 41 and 55 Common Road Studham.

Homes for offspring of villagers - affordable!

Not applicable as we do not want development in this part of Central Beds.

Definitely no housing on land adjacent to Thrales End and A1081.

WE NEED NO MORE THAN 5 HOMES IN ANY ONE DEVELOPMENT. Young people starting out and elderly people cannot afford Studham prices. We need affordable homes for Studham people, not for all of CBC area.

Having grown up in the villages and still living in the village, my children have had to move away. Employing younger people is also very difficult as they can't move into the village.

More starter homes for younger families close to village relatives for child care. Helps to keep local schools open and reduces balance of elderly population.

Many of us 'older generation' want to remain in Totternhoe. If there was somewhere suitable it would release our larger houses to young families (if the younger people in the village/ local area can be assisted to buy at an affordable rate).

Affordable homes for the older generation to downsize and starter homes for younger/ middle generations.

Whipsnade has completed a Housing Needs Survey (twice) which demonstrates a case for 12 new affordable homes. The one identified location (ZSL chequers cottages) has been confirmed by CBC Planners as qualifying for Rural Exception Site Permission.

Local to centre of village.

Housing development is not appropriate in the green belt. Why have you not given the option of fewer rather than more new homes/dwellings?

Bungalows 1/2 bedroom. Leighton Buzzard/Linslade.

General comment: As someone recently out of university, the costs of accommodation is large and we need to address this.

Leighton Buzzard small bungalows.

Bungalows for downsizing and 2/3 bed dwellings for STUDHAM youth.

Housing in the village should be limited to small clusters. The number of houses should be proportional to the small size of the village.

Actual issue is TOO MANY TRAVELLER SITES!!

Housing policies should be addressing all of the above - located in appropriate locations, sustainable and in designated areas. Gypsy and traveller needs must be met but not ghettos - small well dispersed sites throughout borough. Green Belt releases must meet all identified need - mixed sustainable communities.

I would like to see affordable homes for young families.

Affordable homes for people that have lived in villages all their lives. But must be affordable to not big earners.

A few starter homes at Leighton Buzzard end of the village.

Some starter homes.

## Growth & Infrastructure

**Question:** With your chosen type of Infrastructure, please pin-point **one** specific place on the map table using your **orange sticker** where you think there is an opportunity. Please expand below on what you would like to see at this location:

Telecoms.

Local school needed to support the life blood of the parish.

Broadband.

We have no wish to lose our school - which has an outstanding Ofsted report. We could definitely use an improvement to our telecoms network - we have no fast broadband nor mobile signal.

All services require every service.

With ongoing infill development of housing, all services are under particular pressure. However, commuting by school children and young students is very noticeable towards neighbouring areas.

Re-development of Kensworth School with better facilities and parking for parents and staff. Most of all the needs of the children.

Local shop in Totternhoe.

Council control needs to be exercised over development they, the Council, appear weak and afraid. If a house resident broke planning law as much as the travellers, you would take us to court.

Mobile phone mast to give me a signal in Studham.

Proposed loss of indoor bowls a disgrace bearing in mind needs of disabled, retired. Failure of leisure centre to even have equipment and total failure to promote the sport.

We need bigger drains, faster broadband, a more reliable electricity supply to support rural development.

As Environment - drainage problems together with roads overloaded at peak times.

Surgeries are unsubscribed in Leighton Buzzard. Weeks to see GP and must go to A&E hospital L&D (poor utilisation of hospital) especially with thousands of houses proposed for L&D.

Village shop in Studham.

Broadband and mobile phone signal.

Broadband and phone signal.

My local area is in Hertfordshire.

Stop current government ban on shutting down some local chemist shops, which are very much needed by the community.

We need a shop for basic necessities and newspapers.

Need a surgery in Totternhoe.

Having raised children in the village, we used to have the mobile health unit visit for inoculations, weighing, etc. They then went to village school, but now young families can't afford houses. Therefore village school needs to be supported. All linked.

Local surgeries in rural areas with facilities for physiotherapist, osteopathy specialists to work with rural people unable to get into nearby towns for treatment as no local buses!

Very poor mobile phone reception in Totternhoe with some also having TV reception problems. Broadband very slow for some too.

Local shop.

Not specifically this location, but a proposal to build a new school (junior) on a greenfield site combined future provision for Whipsnade, Studham and Kensworth (250 places to Year 6).

Flooding is a huge problem for many houses with residents forced to employ pumps as soon as there is heavy rain.

Sewers and control of water. System at its limit.

Very difficult to encourage new business in a village. I would be happy to consider options/alternatives - all types of business/shops/start up units/incubator units are needed.

Very poor mobile phone coverage in Studham and parts of Whipsnade, and not currently scheduled to benefit from current program with BT.

1973 population approx 8,000. 2017 population approx 38,000 and growing. Additional surgeries required and/or Community Hospital as promised many years ago.

In Leighton Buzzard and local area no community facilities nearest hospitals L&D, MK and Stoke. A central clinic.

Broadband is a force!! Half the village has been upgraded - the rest of us suffer speeds of 1MB-2.5MB. Upgrade to box outside Red Lion now!!!

Useless broadband.

The village broadband and mobile signal is not suitable for business or working from home. Broadband is <2MB. Mobile signal almost zero.

Rural broadband is appalling and needs improvement to allow working from home - less can!! Less use of trains.

High speed broadband is now needed to support education and business development and growth. It underpins every aspect of life today.

Village school is very important.

Small village schools need help to stay open.

Small shop needed in village of Totternhoe.

Electricity is overhead works - subject to power cuts. Broadband reception is poor.

Local store and Post Office.



# Appendix - Supplementary Questions on Feedback Form

## Thank you for responding to this consultation.

Your views will help us to shape the Community Plan that will inform the Local Plan, influence development decisions and help direct investment where it is needed. There will also be other opportunities to comment on the Local Plan as it is developed. There will be an opportunity to express your views in more detail at the next stage.

### Please answer the following questions:

Gender: ☐ Male ☐ Female Age range: ☐ Under 18 ☐ 18-25 ☐ 26-35 ☐ 36-45 ☐ 46-64 ☐ 65+

What postcode do you live at? \_\_\_\_\_

Which town/village do you shop at most often? \_\_\_\_\_

☐ I am a local resident ☐ I am a Town or Parish Councillor for \_\_\_\_\_

☐ I am an organisation representative please state \_\_\_\_\_

Which town/village do you work in (if applicable)? \_\_\_\_\_

Do you consider yourself to be disabled? ☐ Yes ☐ No

To which of these groups do you consider you belong? ☐ White British ☐ Black or Black British  
☐ Asian or Asian British ☐ Mixed ☐ Chinese ☐ Other Ethnic group (please write in) \_\_\_\_\_

### Would you like to be informed of the arrival of the Consultation Draft of the Community Plan for your area? We can notify you of its publication.

Be assured that your personal details will not be published in any report or passed to a third party.

By ☐ post or ☐ email

Name: \_\_\_\_\_

Address \_\_\_\_\_

Email: \_\_\_\_\_

☐ Please tick if you would like to be kept informed of Local Plan Updates.

After completing this feedback form please place in box at front door.

Or post back to us at Local Plans, Priory House, Monks Walk, Chicksands, Shefford, Bedfordshire SG17 5TQ

**Data Protection Act 1998** Please note that your personal details supplied on this form will be held and/or computerised by Central Bedfordshire Council for the purpose of the Local Plan. The information collected may be disclosed to officers and members of the Council and its' partners involved in this consultation. Summarised information from the forms may be published, but no individual details will be disclosed under these circumstances. **Your personal details will be safeguarded and will not be divulged to any other individuals or organisations for any other purposes.**

Sign up for email updates ...

 [www.centralbedfordshire.gov.uk/localplanupdates](http://www.centralbedfordshire.gov.uk/localplanupdates)

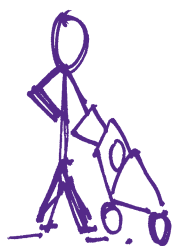
More information on the Local Plan can be found here...

 [www.centralbedfordshire.gov.uk/localplan](http://www.centralbedfordshire.gov.uk/localplan)

# Appendix – Supplementary Questions Summary

Public Consultation Studham Attendees Record					
Response	Gender	Age	Res/Cllr/Org	Disabled?	Ethnic Group
Response	Male: 30 (52.6%)	Under18: 0 (0.0%)	Resident: 57 (90.5%)	Disabled-Y: 5 (7.8%)	White British: 63 (98.4%)
	Female: 27 (47.4%)	18-25: 0 (0.0%)	Councillor: 13 (20.6%)	Disabled-N: 59 (7.8%)	Black or Black British: 0 (0.0%)
	Unknown: 0 (0.0%)	26-35: 2 (3.2%)	Organisation: 10 (15.9%)		Asian or Asian British: 0 (0.0%)
		36-45: 0 (0.0%)			Mixed: 0 (0.0%)
		46-64: 18 (29.0%)			Chinese: 0 (0.0%)
		65+: 42 (67.7%)			Other Ethnic Group: 1 (1.6%)
Nothing Recorded	17	12	11	10	10
Total	74	74	74	74	74

Homes



Growth & Infrastructure

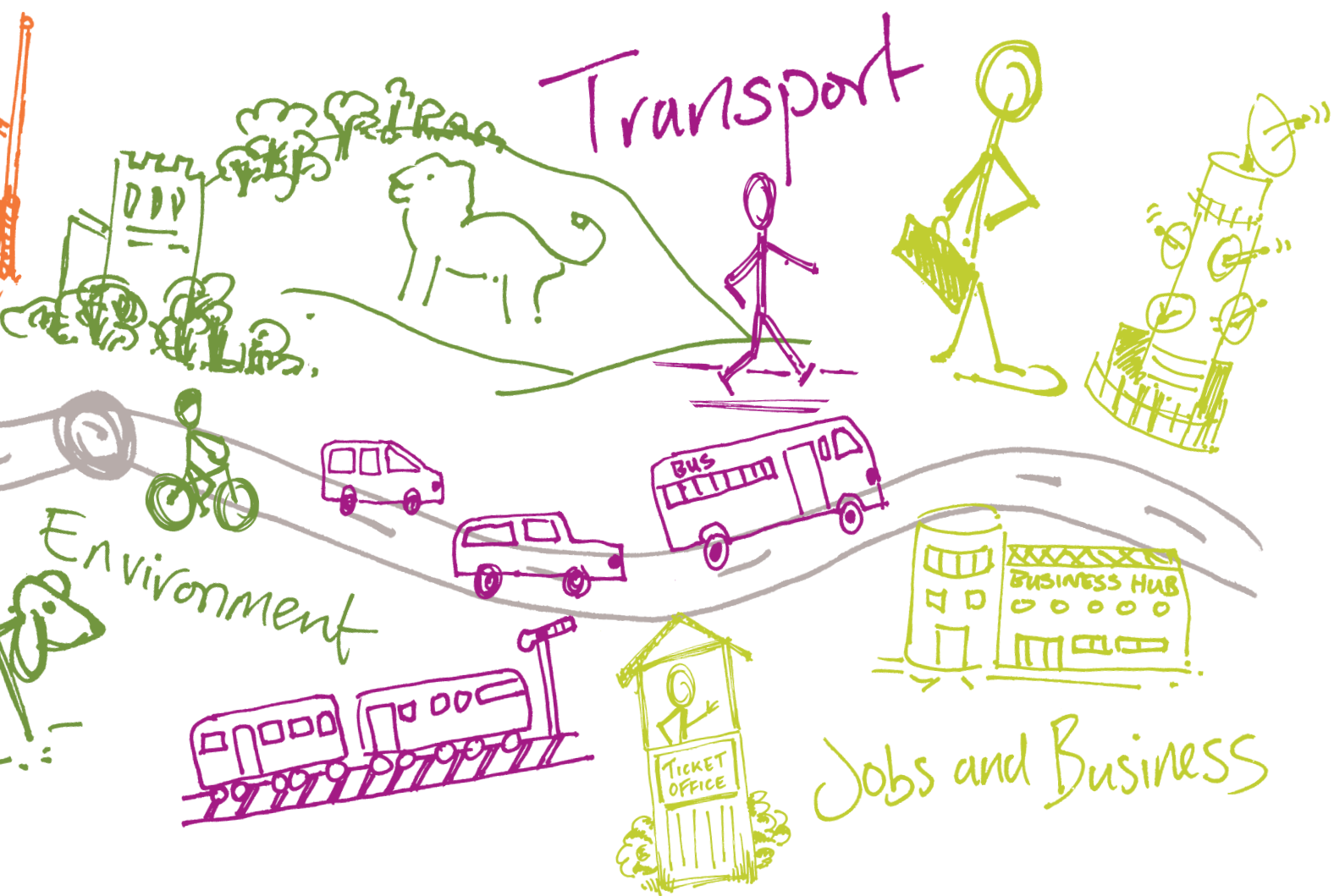


Local character



**A great place to live and work.**

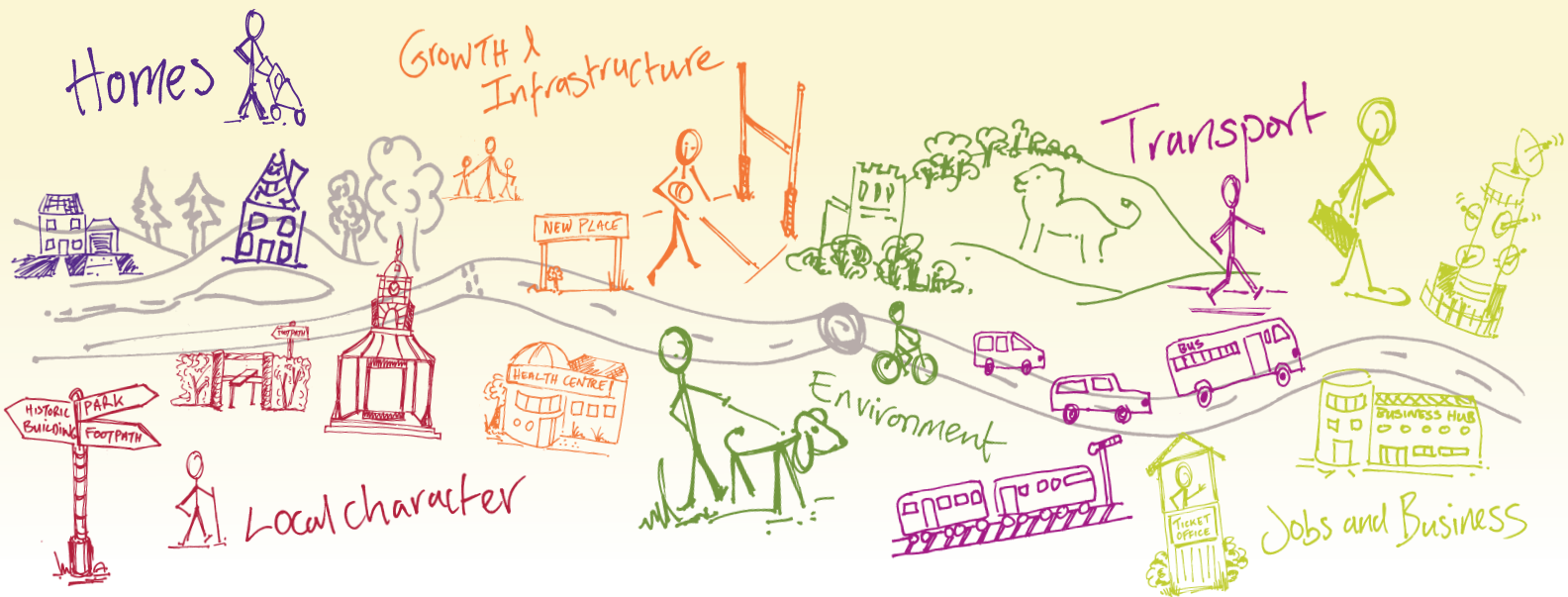




**Central  
Bedfordshire**



# Shaping where you live 2035



## What happens next?

Community Planning is a continuing process and this Community Plan, which collates all the information gathered at the event, is the first time this type of information has been collected. There will be a series of actions arising from the Community Plan which are likely to influence or shape planning policy in the Local Plan, decisions on planning applications, and decisions on where money arising from development should be spent. These actions are identified in total within the 'Overview Statement of Community Planning' which details how they will be dealt with. Central Bedfordshire Council will seek to work in partnership with organisations including Town and Parish Councils, developers and other agencies to deliver on these actions.

## For more info on community planning ...

[www.centralbedfordshire.gov.uk/community-planning](http://www.centralbedfordshire.gov.uk/community-planning)

## More information on the Local Plan can be found here...

[www.centralbedfordshire.gov.uk/localplan](http://www.centralbedfordshire.gov.uk/localplan)

**Disclaimer** Central Bedfordshire Council is the statutory Planning Authority for the area and therefore is bound by legislation and must have regard to government guidance on planning matters.

Community Plan produced in consultation with Central Bedfordshire Council supported by [www.lda-design.co.uk](http://www.lda-design.co.uk)

### This document contains:

Contains OS data © Crown copyright and database right 2016  
Contains Royal Mail data © Royal Mail copyright and Database right 2016  
Contains National Statistics data © Crown copyright and database right 2016

Central Bedfordshire Council:  
© Crown Copyright and database right. 2016 Ordnance Survey 100049029

**Central  
Bedfordshire**

## A great place to live and work.