

Appendix

Community Plan

Covering the parishes of Northill,
Old Warden, Southill

Community Area 6

This Community Says...



Appendix -Feedback Form

Local character

What we have we love. Our history, countryside and communities. We need to build, with care to enhance what we have.

☐ NO ISSUES

Please select **one** type of Local Character from the list below that you would most like to see protected or improvements made within your local area:

- A. ☐ Built Heritage (e.g. ancient monuments, old buildings, memorials)
- B. ☐ Landscape Heritage (e.g. historic parks, protected landscapes)
- C. ☐ Open space natural (e.g. countryside, nature reserves, viewpoints)
- D. ☐ Open space man-made (e.g. parks, common land, village green)
- E. ☐ No improvements

With your chosen type of Local Character, please pin-point **one** specific place on the map table using your **red** sticker where you think there is an opportunity. Please expand below on what you would like to see at this location:

Transport

How do we get around? With more of us on our cycleways, roads, rail. How do we improve & maintain our transport links?

☐ NO ISSUES

Please select **one** mode of travel from the list below that you would most like to see improvements made within your local area:

- A. ☐ Vehicular
- B. ☐ Bus
- C. ☐ Train
- D. ☐ Cycle
- E. ☐ On foot

With your chosen type of Transport from above, please pin-point **one** specific place on the map table using your **pink** sticker where you think there is an opportunity. Please expand below on what you would like to see at this location:

Jobs and Business

Where will everyone work? Supporting local businesses to grow & attracting new business. We need to create jobs for all.

☐ NO ISSUES

Please select **one** type of Business from the list below that you would most like to see investment in to improve business or jobs in your local area:

- A. ☐ Industrial parks
- B. ☐ Business parks
- C. ☐ High street development
- D. ☐ Local retail units
- E. ☐ Small-start-up office centres (innovation hubs)

With your chosen type of Business from above, please pin-point **one** specific place on the map table using your **lime sticker** where you think there is an opportunity. Please expand below on what you would like to see at this location:

Environment

**Our environment is important. It influences how & what we create.
We need quality development.**

☐ NO ISSUES

Please select **one** of the Environment types from the list below that you consider the most valuable attribute to look after for the future within your local area:

- A. ☐ Renewable energy
B. ☐ Pollution (Air)
C. ☐ Pollution (Noise)
D. ☐ Open Space - wildlife habitats
E. ☐ Flood risk

With your chosen type of environmental issue from above, please pin-point **one** specific place on the map table using your **green** sticker where you think there is an opportunity. Please expand below on what you would like to see at this location:

Homes

Homes for every stage of life. A house is not a home until it's lived in. We all need a home we're proud of.

☐ NO ISSUES

Please select **one** of the types of Homes from the list below that you consider are needed within your local area:

- A. ☐ Older generation (downsizing/sheltered) B. ☐ Single living (lifestyle/separation)
C. ☐ New starter homes D. ☐ Family homes E. ☐ Affordable homes

With your chosen type of Home from above, please pin-point **one** specific place on the map table using your **purple sticker** where you think there is an opportunity. Please expand below on what you would like to see at this location:

Growth & Infrastructure

**Where to place homes & services. Supporting market towns, villages & new settlements.
We need to plan places to grow communities.**

☐ NO ISSUES

Please select **one** Infrastructure facility from the list below that you consider is most needed in your local area:

- A. ☐ Healthcare B. ☐ Schools C. ☐ Retail D. ☐ Community Centres
E. ☐ Leisure facility (leisure centre, play areas etc.) F. ☐ Utilities improvements (telecoms/electricity/gas/foul treatment)

With your chosen type of Infrastructure from above, please pin-point **one** specific place on the map table using your **orange sticker** where you think there is an opportunity. Please expand below on what you would like to see at this location:

Appendix - Feedback Form Summary

The following data for Community Area 6 was collected at the event held on Thursday 20th October 2016 at Northill Village Hall from 2:30pm until 7:30pm using questions from the feedback form illustrated on the previous page.

Feedback Form Summary						
Response	What would you most like to see protected or improvements made?	Local Character	What would you most like to see improvements made in?	Transport	Would most like to see investment in to improve business or jobs?	Jobs & Business
No Response		0		0		6
A	Built Heritage (e.g. ancient monuments, old buildings, memorials)	7	Vehicular	8	Industrial parks	1
B	Landscape Heritage (e.g. historic parks, protected landscapes)	3	Bus	9	Business parks	4
C	Open space natural (e.g. countryside, nature reserves, viewpoints)	11	Train	2	High street development	1
D	Open space man-made (e.g. parks, common land, village green)	5	Cycle	5.5	Local retail units	4.5
E	No improvements	1	On foot	4.5	Small-start-up office centres (innovation hubs)	12.5
F	No F question on this theme	-	No F question on this theme	-	No F question on this theme	-
Nothing Recorded		4		2		2
Total		31		31		31

	What do you consider the most valuable attribute to look after for the future?	Environment	Which you consider are needed the most?	Homes	Which you consider are needed the most?	Growth & Infrastructure
		2		2		2
	Renewable energy	4	Older generation (downsizing/sheltered)	9	Healthcare	1
	Pollution (Air)	1	Single living (lifestyle/separation)	0	Schools	0
	Pollution (Noise)	2	New starter homes	5.5	Retail	1
	Open Space - wildlife habitats	17	Family homes	3	Community Centres	1
	Flood risk	3	Affordable homes	8.5	Leisure facility (leisure centre, play areas etc.)	4
	No F question on this theme	-	No F question on this theme	-	Utilities improvements (telecoms/electricity/gas/foul treatment)	20
		2		3		3
		31		31		31

Note:

The public were instructed to only tick one category for each theme. Where an individual ticked more than one category, their choices are divided evenly across the categories.

Local Character

Question: With your chosen type of Local Character, please pin-point **one** specific place on the map table using your **red** sticker where you think there is an opportunity. Please expand below on what you would like to see at this location:

I think the local character is about more than one of these elements, it is the countryside and the dispersal of the developments within the settlements, with their special character that enhance this area of Bedfordshire so reluctantly 'B' has been selected.

Protection and preservation of outstanding restoration of Broom Quarry and the opportunities it has given for nature.

Shuttleworth Museum

Better provision to protect the countryside, install more hedges and woodland and improve for wildlife.

The open space of the parish village greens should be preserved and not infringed by development.

Water Lane leading through to Main Road B658 through village Upper Caldecote

I would like to preserve the existing land to the back of existing settlement boundaries to stop housing encroachment into the countryside. Linear villages should remain so.

We have a beautiful village which needs protection in all aspects A-D.

Old buildings around the Ickwell Green preserved, no new buildings.

Because all my friends get to meet up at the Ickwell green.

Conserve the conservation areas.

Protect the character of Ickwell Green with the maypole, cricket ground and old houses.

Improvements to perimeter track around the Green.

Council owned land Kings Road - developed for low cost housing for local people.

Perimeter track needs attention - potholes, etc. Perhaps another seat or two. The Maypole should be preserved if possible as well as the trees.

Natural open space.

Open countryside needs to be preserved, i.e. Ickwell Green maypole.

Remain open space, conservation area with view.

View around church, pond, grange near junction of Bedford Road, Thorncote Road, Northill.

Open views N.E.S. to be preserved.

Important to keep one side of the crossroads free of development to keep the open view towards Moggerhanger House.

Mainly estate village with old buildings character - must be retained as well as sympathetically modernised. Abbey has potential for tourism and conservation.

Transport

Question: With your chosen type of Transport, please pin-point **one** specific place on the map table using your **pink** sticker where you think there is an opportunity. Please expand below on what you would like to see at this location:

Provided the bus service links with other forms of transport, e.g. taxis, trains, etc. which in Biggleswade should be at a transport interchange which would encourage greater usage of public transport.

Local bus service to visitor attraction.

Mini cab

Improved means of crossing A1.

Roads dangerous - too much speeding. Ickwell to Northill especially.

Development policy to increase the number of dedicated cycleways across the region.

Improved road safety, the impact of proposals to develop the A1 into a smart motorway and its impact on travel and access to integrated hubs of transport in the market towns serving the outlying villages. With adequate parking.

Safety at crossroads (Upper Caldecote).

On cycle or foot, a safe way to reach Biggleswade off road for families

Better parking and railway stations.

Better parking for cars in Biggleswade using the train. Not much long term parking in Biggleswade - mostly 1 hour.

Cycle route favoured by many: Northill - Cople - Cardington - Old Warden - Ickwell should be developed to accommodate the needs of both cyclists and motorists.

Put more cycling routes down in Sandy, Northill, Caldecote and Ickwell. Route to Sandy from Northill.

More frequent buses for the elderly non-drivers to places other than the Bedford/Biggleswade route.

A general problem is lack of a system of transport for elderly and others who don't drive. There is a very low



However, unacceptable use of language has been omitted.



level of usage of buses and it runs at very limited times - not Sundays, not evenings. A different approach is needed.

Lorry access to commercial site at Woodlands Nursery (Upper Caldecote) needs solving. Current daytime access is via location of sticker, night-time access off northbound carriageway of A1 is very dangerous.

Footpath to Jordans Mill and village paths maintained.

Bus routes 74 and 73 are essential for getting older people around who cannot drive or are too old to do so. I'm sure people would rather pay than be without transport.

Keeping bus routes for vulnerable people.

A1 needs to be improved at Sainsbury roundabout.

Buses to run later through the village to enable evenings out - reducing car journeys. Older residents do not like driving, especially at night. Need access to towns.

A footpath and cycleway.

Footpath needed between Upper Caldecote and Ickwell.

Bus service to Biggleswade, Sandy, Bedford from Northill. Later services than current - say just to 1900 - 2000 hours?

Footpath for access between villages and vets.

Put a lorry weight limit down Biggleswade Road and to monitor the speed and traffic flow.

No public transport service. Serious disadvantage for older people especially where no car.

Jobs & Businesses

Question: With your chosen type of Business, please pin-point **one** specific place on the map table using your **lime sticker** where you think there is an opportunity. Please expand below on what you would like to see at this location:

For all the home based businesses and larger - the Ickwell/Northill area is seriously disadvantaged with the quite dreadful Broadband speeds! Why should they be disadvantaged? Government promises?? What can get BT moving?

Heritage Skills Centre - Shuttleworth Collection?

Broadband access. Allows working from home.

Land lies close to the A1 therefore easy access. Also high speed broadband. However, the rest of Ward falls on this.

Small retail or start up office would be ideal instead of having to work from home.

Facilities to encourage small business start ups especially broadband and tech support.

Business development should be focussed on brown field sites and re-use of existing premises. No category above for small rural industry - these are all larger town environments!

Business in this parish has high number of home workers who would appreciate innovative hubs to communicate with each other.

A small local shop, within a walking distance.

Village shop would be good.

A village shop to serve Ickwell and Northill would be very helpful especially to those who don't drive. Nearest shop is 2 miles away in Caldecote.

Area is mostly redundant horticultural buildings - if A1 access can be improved, site is suitable for commercial development if planners will agree. (Site said to be in open countryside - not an issue for me! Also? On flood plain - can be overcome.)

There seems to be ample room/buildings where small local business can be started up. Old farm buildings, etc. anywhere can be converted.

"Help" for young people with good business ideas.

The village should be preserved and the high street developed with shops - not large supermarkets - we have enough of those!

Work in the nursery business.

Small shop in Northill/Ickwell.

Easy access.

This would improve the strong internet connections.

Conversion of redundant farm estate buildings to provide local employment. Urgently need much improved broadband for office/home working.



Environment

Question: With your chosen type of environmental issue, please pin-point **one** specific place on the map table using your **green** sticker where you think there is an opportunity. Please expand below on what you would like to see at this location:



Protection of our valuable green spaces is critical and of course there is more than one!

Broom Quarry restoration to be kept as outstanding example of habitat creation and not built on (as proposed in LDF)

High speed traffic noise on Hill Lane.

A necessity. Noise from large vehicles also considerably increased over the years. HGV should be excluded from vehicles.

Encourage and develop renewable energy supply for the area including community solutions, e.g. incinerators. Also more wildlife habitat.

Create more wildlife habitats in open areas outside settlement envelope.

No building on the chosen location.

Biggleswade needs to clean up.

Not sure where but solar/photovoltaic panels should be compulsory on all new build.

Renewable energy is a national problem that needs to be addressed to counter climate change.

Bedford School Trust have nature reserve at the site.

The area and village already suffers from surface water in light rain - any construction would speed this process.

Although Ickwell Bury has not been used for sometime I would not like this to be used for building as tawny owls and other wildlife, deer, hedgehogs, etc. are there and wild flowers. Bee keeping is also a hobby amongst many.

Having been involved with flooding, feel this subject most important.

General open space generates/provides wildlife habitats which benefits humans and wildlife.

The views to Hatch and Shuttleworth.

Where possible to preserve views.

Sewer investigation.

Some are being encroached by the digester unit that's planned. No large housing developments, i.e. no more than 10.

Retain hedgerows and plant more trees on farmland.

Homes

Question: With your chosen type of Home, please pin-point **one** specific place on the map table using your **purple** sticker where you think there is an opportunity. Please expand below on what you would like to see at this location:

In our Parish affordable homes are in shorter supply than the larger family homes - sufficient to meet local needs - whether they be to provide homes for those with a local connection, or whose place of work is in the Parish.

Gap fill in village locations where it does not impact on rural character. No creep into adjacent farmland.

Actually we require all of the above, however downsizing would release more family homes, but of course you need the type of house e.g. bungalows to encourage people to downsize.

Expensive area. Many larger homes around but young families enable to stay in their area.

If there was more suitable accommodation for people to downsize it would allow people to stay in the area and release family homes.

A wide variety of homes are required to suit the different stages of life. Bungalows would free-up family homes to allow new families to up-size. Affordable needs to accommodate costs within the reach of people not in "professional" employment and therefore unable to accrue large deposits.

No further development in Upper Caldecote

I think they are all important so answering from personal perspective. Need smaller 2/3 bed lifetime homes rather than bungalows which are expensive - market housing.

Need homes/bungalows for people who own their own home as not eligible for affordable, etc.

Because our house cost around £400,000 (tiny garden, not too big house ever) (Havlock Road mostly).

See local plan.

Affordable houses FOR RENT. Rents at a price people can afford.



Bungalows/2 or 3 bed houses for parishioners to downsize (empty next syndrome). Could also be suitable for affordable housing, apart from distance from shops (next village).

Council owned land Kings Road.

Several of us are now single and living in homes too big for us - we need to downsize but we don't necessarily want to leave our friends. Places such as Chantry Piece are good but the young need them. We can afford places such as bungalows which could be in Northhill.

Homes to suit regular families with average needs.

With many people downsizing more suitable homes are required within Northhill parish.

Build in Caldecote as opposed to on the edges. Land at Biggleswade Road starter homes and other smarter homes.

Housing suitable for young families to avoid villages becoming retirement communities only.

There are already affordable homes plus non-affordable being built in the village (Northhill/Ickwell). We do not want to grow any further - preserve the village.

Good quality starter homes, energy efficient.

Smaller bungalows (2 bedroom).

Have recently built houses for rent or part purchase. Still opportunity for smallscale family/starter homes for young people.

Growth & Infrastructure

Question: With your chosen type of Infrastructure, please pin-point **one** specific place on the map table using your **orange sticker** where you think there is an opportunity. Please expand below on what you would like to see at this location:

We have real problems with Anglian Water and drainage - plus water supply - but don't forget Broadband!!

Wildcard - we really need a play area for both Northhill and Ickwell for 5-10 year olds.

Old Warden community hub proposal

Better sewage provision and broadband.

No play areas except in local school.

Broadband - high speed.

With the larger number of houses required - broadband; water are a major issue in the Parish. Flooding, foul sewage smells are common due to back-up. More housing will exacerbate this and Anglian Water seem to fail to acknowledge the problem. Also impact on housing, health and schools.

Ability to access broadband and get a mobile phone signal vanes within the parish. It should be standard and good. Would also assist businesses.

Not in the village. Concentrate on local towns.

Broadband? Specially anyone working from home.

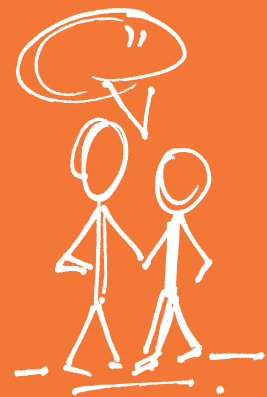
Play area.

The internet is pretty terrible in Northhill (can't load Pokemon Go up).

No gas in the village of Northhill and broadband extremely slow.

No ideas where.

A much better broadband service is needed. It is an essential for modern day living and especially for people working from home. Broadband speed is extremely slow in Northhill and services such as i-player cannot be accessed for quite a significant part of the day.



Mobile connectivity in Ickwell is useless. (If I had a second choice, I would select poor foul treatment along Biggleswade Road, U.C. - local infrastructure is stretched.)

Playground.

There is a need for a general store - we are on a bus route but if this is ever stopped it's a mile to Caldecote. There was a shop in Caldecote Road - now a flat - which is always changing hands - which perhaps could be used, i.e. people can park on the green or walk there.

Possibly building small care homes for use in villages, where local volunteers can help the care of elderly.

With more homes/industry being created the associated utilities need to be upgraded, i.e. Biggleswade Road, Upper Caldecote.

Broadband signal improvement for Northhill and Ickwell.

It would be nice to get a decent broadband.

Broadband.

Faster broadband.

Foul sewer upgrading along Biggleswade Road.

Sewage issues and internet issues - need improvement.

Broadband

Lousy broadband service which must be improved. Do not accept that we should have to wait for years.

Appendix - Supplementary Questions on Feedback Form

Thank you for responding to this consultation.

Your views will help us to shape the Community Plan that will inform the Local Plan, influence development decisions and help direct investment where it is needed. There will also be other opportunities to comment on the Local Plan as it is developed. There will be an opportunity to express your views in more detail at the next stage.

Please answer the following questions:

Gender: ☐ Male ☐ Female Age range: ☐ Under 18 ☐ 18-25 ☐ 26-35 ☐ 36-45 ☐ 46-64 ☐ 65+

What postcode do you live at? _____

Which town/village do you shop at most often? _____

☐ I am a local resident ☐ I am a Town or Parish Councillor for _____

☐ I am an organisation representative please state _____

Which town/village do you work in (if applicable)? _____

Do you consider yourself to be disabled? ☐ Yes ☐ No

To which of these groups do you consider you belong? ☐ White British ☐ Black or Black British
☐ Asian or Asian British ☐ Mixed ☐ Chinese ☐ Other Ethnic group (please write in) _____

Would you like to be informed of the arrival of the Consultation Draft of the Community Plan for your area? We can notify you of its publication.

Be assured that your personal details will not be published in any report or passed to a third party.

By ☐ post or ☐ email

Name: _____

Address _____

Email: _____

☐ Please tick if you would like to be kept informed of Local Plan Updates.

After completing this feedback form please place in box at front door.

Or post back to us at Local Plans, Priory House, Monks Walk, Chicksands, Shefford, Bedfordshire SG17 5TQ

Data Protection Act 1998 Please note that your personal details supplied on this form will be held and/or computerised by Central Bedfordshire Council for the purpose of the Local Plan. The information collected may be disclosed to officers and members of the Council and its' partners involved in this consultation. Summarised information from the forms may be published, but no individual details will be disclosed under these circumstances. **Your personal details will be safeguarded and will not be divulged to any other individuals or organisations for any other purposes.**

Sign up for email updates ...

 www.centralbedfordshire.gov.uk/localplanupdates

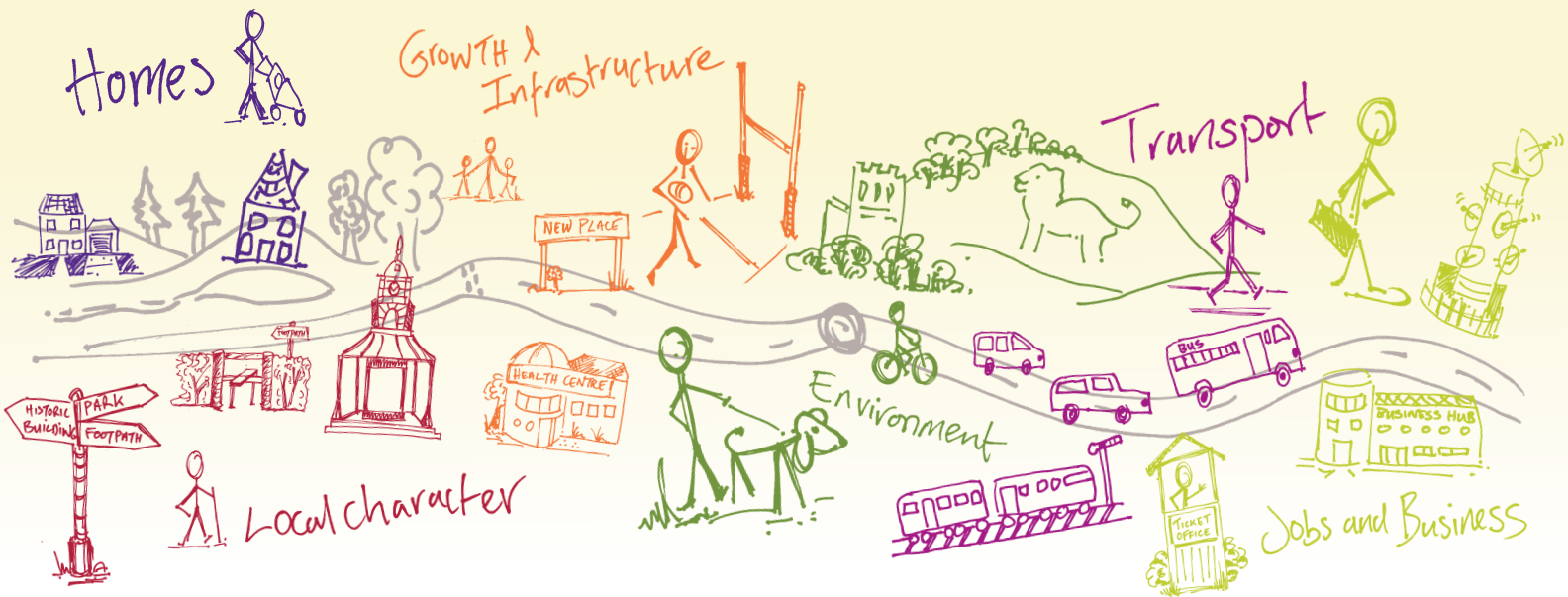
More information on the Local Plan can be found here...

 www.centralbedfordshire.gov.uk/localplan

Appendix – Supplementary Questions Summary

Public Consultation Northhill Attendees Record					
	Gender	Age	Res/Cllr/Org	Disabled?	Ethnic Group
Response	Male: 12 (40.0%)	Under18: 2 (6.9%)	Resident: 22 (75.9%)	Disabled-Y: 1 (3.3%)	White British: 28 (100.0%)
	Female: 17 (56.7%)	18-25: 0 (0.0%)	Councillor: 2 (6.9%)	Disabled-N: 27 (90.0%)	Black or Black British: 0 (0.0%)
	Unknown: 1 (3.3%)	26-35: 0 (0.0%)	Organisation: 0 (0.0%)		Asian or Asian British: 0 (0.0%)
		36-45: 0 (0.0%)			Mixed: 0 (0.0%)
		46-64: 8 (27.6%)			Chinese: 0 (0.0%)
		65+: 19 (65.5%)			Other Ethnic Group: 0 (0.0%)
Nothing Recorded	1	2	2	1	3
Total	31	31	31	31	31

Shaping where you live 2035



What happens next?

Community Planning is a continuing process and this Community Plan, which collates all the information gathered at the event, is the first time this type of information has been collected. There will be a series of actions arising from the Community Plan which are likely to influence or shape planning policy in the Local Plan, decisions on planning applications, and decisions on where money arising from development should be spent. These actions are identified in total within the 'Overview Statement of Community Planning' which details how they will be dealt with. Central Bedfordshire Council will seek to work in partnership with organisations including Town and Parish Councils, developers and other agencies to deliver on these actions.

For more info on community planning ...

www.centralbedfordshire.gov.uk/community-planning

More information on the Local Plan can be found here...

www.centralbedfordshire.gov.uk/localplan

Disclaimer Central Bedfordshire Council is the statutory Planning Authority for the area and therefore is bound by legislation and must have regard to government guidance on planning matters.

Community Plan produced in consultation with Central Bedfordshire Council supported by www.lda-design.co.uk

This document contains:

Contains OS data © Crown copyright and database right 2016
Contains Royal Mail data © Royal Mail copyright and Database right 2016
Contains National Statistics data © Crown copyright and database right 2016

Central Bedfordshire Council:
© Crown Copyright and database right. 2016 Ordnance Survey 100049029

**Central
Bedfordshire**

A great place to live and work.