

Appendix

Community Plan

**Covering the parishes of Brogborough,
Cranfield, Hulcote & Salford, Lidlinton,
Marston Moretaine, Millbrook,
Ridgmont**

Community Area 11

This Community Says...



Appendix -Feedback Form

Local character

What we have we love. Our history, countryside and communities. We need to build, with care to enhance what we have.

NO ISSUES

Please select **one** type of Local Character from the list below that you would most like to see protected or improvements made within your local area:

- A. Built Heritage (e.g. ancient monuments, old buildings, memorials)
- B. Landscape Heritage (e.g. historic parks, protected landscapes)
- C. Open space natural (e.g. countryside, nature reserves, viewpoints)
- D. Open space man-made (e.g. parks, common land, village green)
- E. No improvements

With your chosen type of Local Character, please pin-point **one** specific place on the map table using your **red** sticker where you think there is an opportunity. Please expand below on what you would like to see at this location:

Transport

How do we get around? With more of us on our cycleways, roads, rail. How do we improve & maintain our transport links?

NO ISSUES

Please select **one** mode of travel from the list below that you would most like to see improvements made within your local area:

- A. Vehicular
- B. Bus
- C. Train
- D. Cycle
- E. On foot

With your chosen type of Transport from above, please pin-point **one** specific place on the map table using your **pink** sticker where you think there is an opportunity. Please expand below on what you would like to see at this location:

Jobs and Business

Where will everyone work? Supporting local businesses to grow & attracting new business. We need to create jobs for all.

NO ISSUES

Please select **one** type of Business from the list below that you would most like to see investment in to improve business or jobs in your local area:

- A. Industrial parks
- B. Business parks
- C. High street development
- D. Local retail units
- E. Small-start-up office centres (innovation hubs)

With your chosen type of Business from above, please pin-point **one** specific place on the map table using your **lime sticker** where you think there is an opportunity. Please expand below on what you would like to see at this location:

Environment

**Our environment is important. It influences how & what we create.
We need quality development.**

NO ISSUES

Please select **one** of the Environment types from the list below that you consider the most valuable attribute to look after for the future within your local area:

- A. Renewable energy
- B. Pollution (Air)
- C. Pollution (Noise)
- D. Open Space - wildlife habitats
- E. Flood risk

With your chosen type of environmental issue from above, please pin-point **one** specific place on the map table using your **green** sticker where you think there is an opportunity. Please expand below on what you would like to see at this location:

Homes

Homes for every stage of life. A house is not a home until it's lived in. We all need a home we're proud of.

NO ISSUES

Please select **one** of the types of Homes from the list below that you consider are needed within your local area:

- A. Older generation (downsizing/sheltered)
- B. Single living (lifestyle/separation)
- C. New starter homes
- D. Family homes
- E. Affordable homes

With your chosen type of Home from above, please pin-point **one** specific place on the map table using your **purple sticker** where you think there is an opportunity. Please expand below on what you would like to see at this location:

Growth & Infrastructure

**Where to place homes & services. Supporting market towns, villages & new settlements.
We need to plan places to grow communities.**

NO ISSUES

Please select **one** Infrastructure facility from the list below that you consider is most needed in your local area:

- A. Healthcare
- B. Schools
- C. Retail
- D. Community Centres
- E. Leisure facility (leisure centre, play areas etc.)
- F. Utilities improvements (telecoms/electricity/gas/foul treatment)

With your chosen type of Infrastructure from above, please pin-point **one** specific place on the map table using your **orange sticker** where you think there is an opportunity. Please expand below on what you would like to see at this location:

Appendix - Feedback Form Summary

The following data for Community Area 11 was collected at the event held on Thursday 1st December 2016 at Marston Moretaine Village Hall from 2:30pm until 7:30pm using questions from the feedback form illustrated on the previous page.

Feedback Form Summary						
Response	What would you most like to see protected or improvements made?	Local Character	What would you most like to see improvements made in?	Transport	Would most like to see investment in to improve business or jobs?	Jobs & Business
No Response		3		13		19
A	Built Heritage (e.g. ancient monuments, old buildings, memorials)	11	Vehicular	45.5	Industrial parks	8.5
B	Landscape Heritage (e.g. historic parks, protected landscapes)	6	Bus	29	Business parks	18
C	Open space natural (e.g. countryside, nature reserves, viewpoints)	97.5	Train	14	High street development	17
D	Open space man-made (e.g. parks, common land, village green)	15.5	Cycle	19.5	Local retail units	26.5
E	No improvements	2	On foot	14	Small-start-up office centres (innovation hubs)	41
F	No F question on this theme	0	No F question on this theme	0	No F question on this theme	0
Nothing Recorded		7		7		12
Total		142		142		142

	What do you consider the most valuable attribute to look after for the future?	Environment	Which you consider are needed the most?	Homes	Which you consider are needed the most?	Growth & Infrastructure
		7		16		10
	Renewable energy	11	Older generation (downsizing/sheltered)	31.4	Healthcare	67.5
	Pollution (Air)	16	Single living (lifestyle/separation)	3.4	Schools	9
	Pollution (Noise)	9	New starter homes	13.7	Retail	8.5
	Open Space - wildlife habitats	74	Family homes	25.7	Community Centres	7.5
	Flood risk	13	Affordable homes	35.7	Leisure facility (leisure centre, play areas etc.)	12.3
	No F question on this theme	0	No F question on this theme	0	Utilities improvements (telecoms/electricity/gas/foul treatment)	17.3
		12		16		10
		142		142		142

Note

The public were instructed to only tick one category for each theme. Where an individual ticked more than one category, their choices are divided evenly across the categories.

Local Character

Question: With your chosen type of Local Character, please pin-point **one** specific place on the map table using your **red** sticker where you think there is an opportunity. Please expand below on what you would like to see at this location:

Marston Vale was and is a wheat producing area of high quality.

It is very important to protect woodlands in the area, e.g. Marston Thrift and Hulcote Wood, and for many more trees to be planted, partly to reduce the risk of flooding.

All current features to be maintained.

Consideration needs to be given to the established communities and the countryside and viewpoints it enjoys - green buffers around villages will make people feel far less threatened.

The view towards Milton Keynes and the airfield should be protected from development and left as a green belt area.

Protect the countryside so Lidlington doesn't get built on. Protect the forest areas and crop fields.

Would like Forest of Marston Vale to be awarded "protected status" to ensure it's future security for our communities.

I would like to see the open spaces around the village.

The Thrift - potential for imparting knowledge, countryside activities, foraging, etc.

Marston Vale woodlands to be protected.

The fields and open spaces should remain.

No development - to be left as is.

Left as it is, the view up to the Sandstone ridge capped by the trees of Woburn Park.

To be left as it is.

A moratorium on building houses in open countryside.

A green belt between Cranfield and M1. Views are lovely - please don't spoil them.

Cranfield - retain open space, natural countryside, nature reserves (as relevant) and viewpoints.

Protection of existing open spaces and green space.

Sorry I put my sticker "anywhere". As 'C' says countryside this is becoming less and less. With nature reserves viewpoints will be protected for many generations to come.

The area between Marston Thrift and Cranfield village offers beautiful views and much needed space for walking and cycling. This space needs to be preserved.

More natural countryside left for wildlife.

East End.

See "the environment"

Easy on building. Keep Cranfield village like.

Keep the vale appealing.

Keep it as it is.

Turn the former pits on the east side of the railway into a wetland nature reserve tied to the Millennium Park. No more wind turbines - get rid of the ones already here. Negative affect on bird life. Bridge over railway.

No more wind turbines.

Farmland between M1 and village/ university should be part of green belt around village.

Retain rural countryside feel.

I wish to see the open spaces preserved, so ideally no improvements would do this, but I would at least like the impact of any developments to have minimal impact on the countryside but especially to the public paths and the Greensand Ridge.

I would like to see the open spaces and existing Greensand Ridge and network of public rights of way around Ridgmont preserved and enhanced by improved maintenance.

Cranfield - please keep open spaces/hedges, etc. Too much is being ripped up for development.

Please don't build on all our open spaces - leave some for us to enjoy - formally protected if possible.

Protect Ridge Sands walk. Bridleways. Footpaths in and around village.

Protection of the countryside and farmland, which is an intrinsic part of the DNA of the area. Also, the various footpaths need to be protected, along with the views of the countryside from these paths and local houses.

Make sure that there is no more housing development on the Forest Centre Area Park.

Ancient footpath Greensand Ridge Walk. A? or B?

Greensand Ridge Walk. Also could be classified under 'B'. Ancient could be 'A' or 'B'.

No improvements needed in Millbrook.

Roundhouse and environs. The old house is now derelict but needs protecting from degenerating further.

To preserve ancient footpaths, Greensand Ridge, bridleways - enhance the Greensand Ridge landscape. Preserve rural character.

Village green spaces are gradually being built on. More needed for leisure uses and nothing for youngster in village.

To preserve ancient footpaths and bridleways and enhance the Greensand Ridge footpaths and protect local character of villages.

Too many houses being built on green land. Soon there will be no spaces between Marston/Cranfield/Wootton and Kempston.

To keep more open spaces and parks to help the village stay a village.

Please can we preserve our countryside which is disappearing fast!

Preserve country aspect of Forest Centre and beyond. Do not want to see recycling building etc. near to Forest Centre.

Forest Centre and air quality in area - traffic control.

Keep character of "small village" - support infill not major developments which change nature of environment, e.g. 40% increase in number of houses in 2 years.

Open countryside is always the most natural way of protecting our wildlife - be it predator or prey without interference. Viewpoints should remain protected.

Stewartby Lake to make more attractions for people.

However, unacceptable use of language has been omitted.



At present we have open countryside around Cranfield with bridle paths etc. but these must be protected to ensure people can have places to walk as exercise and their general wellbeing.

Protect Marston Vale Country Park from further development. It is a great asset to the local community.

Although I have nominated open space natural I believe that any open space and heritage area should be protected.

Need to preserve as many open spaces as possible including Forest Centre, parks, village greens, etc., also our historic buildings and monuments.

Further development at the Forest Centre with even more disability access.

Station Road opposite new road into Marston Park. Area for young children to play safely and protected from traffic.

The fields in Marston I would like to see protected against any more building work, and where there is building, would like to see maintained footpaths and walking routes through the fields (especially Grand Forest Centre and Marston Park).

Need to preserve outside space to encourage outdoor activities to promote healthy lifestyle.

The natural open space needs to be protected to ensure a quality of life and avoid further pollution and flooding. Too much building work going on in Cranfield.

The Greensand Ridge walk/trail/footpath is a wonderful route across countryside. Sections of this countryside have been submitted for development but should not be built and should be PROTECTED.

St Mary's Church, Marston Moretaine would like to see restoration of the church tower and bells.

Parking for cars.

Existing open spaces protected around Brogborough and not built on.

Preserve and improve on the forest of Marston Vale. More trees, etc. Keep as much as possible free from "development".

Regional scale habitat creation, i.e. wet woodland, grassland and areas of coppice, in line with sustainable development.

Access to Brogborough Lake.

I would like to see open space natural protected and more natural space created.

Respect for old, listed buildings.

Salford is a small village within countryside (surrounding the village) and has common land, farm fields within the housing areas that make up the village. Any building historically has kept new house building to 1 or 2 houses built in keeping with existing housing and land. This should be retained moving forward to avoid destroying the character of the village.

There is scope for connecting and better managing some of these spaces, contributing further to the community forest.

Walkways/cycle paths. Country parks. Space available to take children and interact with nature.

Keeping our footpaths open and linked to Bunyan Trail.

Tree planting and widened walkways.

Green Belts preserved - they were created for a reason.

Residential property representing the 19th century heritage still in use. Protected.

Maintain rural and wildlife habitat.

Improved path suitable for bicycles. Further enhance views and rest points.

Strategic expansion of the Millennium Country Park to create vital ecological corridors that radiate out from the heart of the area.

Beautiful views over the Marston Vale to the Greensand Ridge Holcot Wood should be an SSSI.

An extension to the Forest Centre and wetland. Increase leisure amenity.

To see existing parks, heritage/green belt stay protected from planning and new homes. I want to see our beautiful rural landscape remain rural and protected for us and wildlife to enjoy.

Existing landscapes such as parks, footpaths must be kept protected. The rural environment and landscape has to stay rural.

I would like to ensure that open spaces stay that way and the local heritage is protected.

Protect the natural beauty of green belt including heritage walks. Views are very limited. Clear countryside preserves the views we have. Build on brown sites only.

Retain and develop Stewartby brickworks as a heritage site.

Maintain open space and 'old' parkland here close to Cranfield Court.

This is everywhere - no specific location. Marston Vale is seen as industrially scarred, by people who have never been here. Building over everything is an issue for me.

All of these are important but do not join villages up with towns.

We need to stop building on green belt, thus reducing access to open countryside for walkers.

Make Marston Vale Green Belt (to compensate four Center Parcs).

Protection of natural habitats.

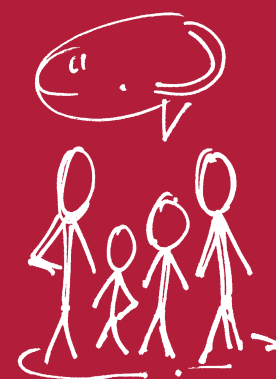
Alms houses, High Street, Cranfield.

More places for horse owners to safely ride away from traffic.

Open spaces for walking and dog walking.

Green open spaces for walking.

Keeping the villages separate with own identities.



Transport

Question: With your chosen type of Transport, please pin-point **one** specific place on the map table using your **pink** sticker where you think there is an opportunity. Please expand below on what you would like to see at this location:

To get across the vale you have to travel by bus into Bedford and back out again. Marston to Ampthill more than 1.5 hours, quicker to walk (if you can).

It is vital to control the number of vehicles on the road with traffic frequently clogging up. There should be a big investment in new cycle paths and much more investment in public transport, particularly bus services. Good maintenance of public footpaths required.

Bus route to tie up smaller settlements.

Local schools and shops are accessible easily on foot but people seem to be car orientated. More should be done to discourage the use of cars unless it is absolutely necessary.

Remove all HGVs and lessen through traffic in centre.

Very poor service - no public transport to GP services.

Junction 13 needs improvement for the safety of our residents.

With all the new development more and different routes.

Cranfield High Street - ideal for cycleway - area is flat and desire lines to university, etc.

A cycle path for students would be a much safer option for this stretch of road. As more students attend Cranfield University and rest rooms in the village or choose to attend events at the football club, there is increasing risk of injury or worse when walking or cycling along this busy road at all times of day.

Improved road network to prevent Millbrook village being used as "rat run"/Ampthill bypass.

Footpath from Center Parcs to Flitwick.

Park and Ride bus link into Milton Keynes Centre.

Park and Ride to Milton Keynes.

Cycle ways from Cranfield towards the university on Crawley Road - not safe at present but students and villagers use that road from walking and cycling to the university, etc.

Cycle tracks around airfield to industrial units and college.

Better paving, clearer footpaths free from parking on footway, e.g. Mill Road/High Street by Co-op which is a danger to young and old.

Comprehensive paving to walk/cycle from one village to the next - not just across fields - which is lovely. Sorry sticker in wrong place. Didn't read instructions carefully!

Station Road/Bedford Road junction.

Bedford Road/Cranfield High Street does not have the capacity to cope with the increasing level of traffic. The situation is made worse by new development around Lodge Road, Hill Leys and (in the future) Mill Road. The road system needs to be sorted out.

More cars on the roads make it unpleasant for cyclists. More cycle tracks needed.

Stagecoach/other providers - need to cooperate. Buses for all round the houses instead of direct to Bedford or MK.

Maintain footpath at the end of the High Street outside Alms Houses.

Cranfield is a long 'one' street village. All development spews onto the High Street. There will soon be a third school to be accommodated with no additional main road infrastructure.

A connection between Station Road and Woburn Road, Marston to reduce the flow of traffic in the centre of the village.

Accelerate E-W rail link now government money available. 2024 is ridiculous.

Lower Shelton Road at the moment one bus an hour, rest of village more. C10 misses Lower Shelton Road out.

Improve junction in Salford to assist traffic flow.

There is a train station nearby where I live but not bus connection to it.

I would like to see a reliable, efficient bus service which would provide an alternative to using a car and which would transport passengers to local shops and beyond, which is currently not available.

Ridgmont would benefit from a bus service that links it up with Ampthill, Flitwick and Milton Keynes with greater frequency.

Transport is adequate - we have a good bus service (Uno especially and Stagecoach) serving Cranfield.

More routes in and out of new estates. One (or eventually two) entrances is wholly inadequate for the number of homes and drivers. Please address this at the planning stage. See Marston Park as an example.

Maintain footpaths. Lighting. Sign cleaning. Ped crossing for school in Ridgmont. Provide safe parking for lorries at current industrial units. Parking is unsafe every night.

Protection of the local footpaths and walkways.

Access to the Marston Park Estate is terrible. The roads are too narrow and there is only one access at present to the whole estate.

Greensand Ridge Walk. Kept clear for all to enjoy. No new houses please.

More signage and advertising of available routes!

I think the Amazon and other warehouses are too close to J13 of M1 and it's causing a lot of congestion.

We need proper enforcement of the width and weight restrictions in the village which we do not have at the moment.

Junction 13 of M1 totally inadequate, causing traffic built up on all roundabouts and feeder roads - knock on affect along C94.

Bus routes.

Bus from Marston Moretaine to Flitwick - particularly useful for train using commuters and non-car owners for shopping.

Enhance and preserve and improve footpaths especially Greensand Ridge. Preserve rural countryside.

However, unacceptable use of language has been omitted.



Marston Moretaine buses run through village but hardly ever on time. My daughter cannot get bus to Bedford college on time as buses aren't reliable. Also the price of the buses is extortionate!! No student concession for 16 year old.

Improve and enhance Greensand Ridge public footpaths and bridleways.

Two buses go through Marston Moretaine towards Bedford from different companies (so that if you buy a ticket on one you cannot make a return journey on the other) and they come within 15 minutes of each other once an hour. We need more services and better frequency.

Cycle tracks to link with existing cycle ways which are extremely poor.

We are all being encouraged to use bicycles - great idea - BUT this needs linked up thinking and development to create SAFE cycle ways that are connected - why on earth one was not created when the Ridgmont bypass was built we don't understand!

Bridges ASAP to support walking to Forest Centre.

Traffic calming measures have caused gridlock at peak times and this is before c.700 new homes have been built and occupied. If proposed sites are approved ensure new "bypass/high street" is provided to ease such congestion.

Lack of decent public transport promotes pollution in use of the car. There is almost zero public transport at my location.

From Cambridge to Oxford.

The current village high street is unable to cope with the current traffic without the proposed 40% increase in the inhabitants.

Marston would benefit with bus service to Flitwick.

Update the new A421 with a new junction directly into Green Lane leading to Stewartby. This would take 500+ lorries per day clogging up the Little Chef roundabouts and take them away from houses following the opening of the Covanta incinerator.

Area for car parking at Millbrook station. The transport system in the area needs to be overhauled.

Improve traffic management on C94 (old A421) by means of traffic calming and speed cameras. Also speed cameras within village on Beancroft Road and Bedford Road to get cars to slow down.

So many accidents on the old A421 and the new A421.

Beancroft Road, Marston needs traffic calming. Need a bypass around Marston.

At junction of Station Road/Bedford Road. When exiting Station Road it is impossible to see to right as parked vehicles obscure view. You take life into your hands particularly when turning right.

We need train line from Cambridge to Oxford.

Better residential parking. Less parked cars on the roads. Well maintained roads and street lighting.

A more affordable and regular service for rural places.

The population in Cranfield is increasing. The bus service needs improving and financially supported.

J13 of M1. Infrastructure is insufficient with expansion of Amazon/industrial area it is already chaos. Improve J13 and stop expansion of business parks/homes.

M1 J13, A507, A421 junction is inadequate for the amount of traffic badly planned and built. It is a bottleneck and dangerous.

Rail link to London from Flitwick - cost and availability of parking at the station could be improved. Also reliability of Thameslink service.

Roundabout.

Regular buses through Brogborough to MK and Bedford - more than 1 a day please!

The public footpaths do not easily allow for interesting circular walks around Brogborough. A path around Brogborough lake would be welcome.

Improving connectivity between new and established communities/areas of recreational interest, i.e. woodland, open water or strategic NMU routes.

Delivery of East West rail will unlock growth and support housing development through sustainable transport links to employment centres - MK, Bedford and Cambridge.

I think the bus services for OAPs and young people is poor and need improving. OAPs need opportunities for health and shopping. Young people need to be able to access further and higher education.

High Street, Cranfield is a racetrack at busy (school, work) times. Like to see traffic calming measures.

Marston Hill.

As there is no bus service through the village and future developments (housing or industrial) must take into account the road access to villages on the MK/Beds border. Consideration should be given to a new road bypassing Salford to give better access to Cranfield from MK and from Cranfield to J12 on the M1 to avoid total road block on the existing 'rat run' via Broughton Road.

A commuting cycle lane on the old A421 would facilitate cycling to Bedford. When I worked there I wanted to cycle but existing cycle routes are too indirect and dangerous (narrow roads, low visibility).

Cycle lane. Clear views at junctions so vehicles can see other cars and cyclists.

Extra station and stops on Bedford - Bletchley line.

Dreadful area around Junction 13 M1. Must have a lorry park.

Cambridge Oxford link.

I drive and using my bus pass. Pothole repairs not patching up.

Improvements to road system that safeguards the village high street and not turn this into a motor vehicle menace for foot traffic and residents.

Transport continued



The 2 T-junctions in the village are dangerous with the volume of traffic and unacceptable level of queuing at peak times and when issues on other nearby roads forcing traffic through the village.

A421 - Salford Road and all of J13 is an accident black spot, as well as insufficient for purposes.

Completion of off-road section of NCN Route 51 and "branch" routes to connect communities more completely.

Congestion at J13 on the M1 needs to be addressed. Rat running through the villages to and from the junction is a serious issue.

East West road to give southern bypass to Marston Moretaine. Approx Station Road to old A421 following disused railway.

Junction 13 is gridlocked at peak hours as it is. It is hugely concerning to think how our local infrastructure would flow and function with thousands more houses, warehouses, etc. built in this area. Ridgmont and other small villages would become rat runs and we could not cope with thousands more cars and lorries on our roads daily, unless a radical new infrastructure was put in place.

Junction 13 is not working - any new development will make it even worse than it is already. How can we cope with new homes of such scale? We have fought for 20 years to get the Ridgmont bypass, and it has proved to be very beneficial to the life of the village and community. New houses means more cars and the village will be used as a rat run for drivers to get from A to B. This is already happening in Milton Keynes.

More safe footpaths and natural walks.

Appalling J13 M1 intersection and A421.

Put a weight limit on the old A421 and remove opportunities for HGV overnight parking. Improve white lining along full length.

Long queues at rush hour on intersection from Cranfield Road into Salford near Rectory Farm.

I drive a lot. I would like to use the train or cycle. The Marston Vale line is not reliable and we desperately need East-West rail to provide more frequent trains. I also cycle and the local roads are lethal for cyclists - too much traffic and travelling too fast.

I drive to work each day, Brogborough to MK - my journey is taking longer and longer as traffic increases. Cycling is not an option as it's too dangerous.

Hardly any connected cycle paths in the area. It would be great if we could walk/cycle around Brogborough Lake.

Fix the M1 and J13 and restore Lidlington Pit as a Country Park.

Country lanes around Cranfield/Salford.

Better roads leading to junction 13 from Salford - currently too much traffic.

Exiting A421 at M1 junction 13 (before crossing M1), traffic lights confusing. Left lane needs traffic light to avoid serious crashes.

Links to A421 and M1 is key for new housing but village is full = other side to Marston is key.

Jobs & Businesses

Question: With your chosen type of Business, please pin-point **one** specific place on the map table using your **lime sticker** where you think there is an opportunity. Please expand below on what you would like to see at this location:

There are local areas of high technical expertise: Cranfield University, LM at Amphill, Millbrook. These should all be encouraged.

There are business parks already in this area at Brogborough and at the Cranfield campus. Further small businesses should be encouraged to set up in the area.

These should be built before they are sold as small businesses need to move quickly. No wait for build to order.

I have chosen the high street development because 'regeneration' of our small/large towns/villages make for nicer communities. 'Industrial parks' - should always be built well out of settlements.

There are very few examples of good high streets for shoppers in the Central Bedfordshire area. Amphill is a good example of what is needed.

Not just warehousing.

Protect local businesses. Keep rates low. Especially grocery shop facilities for the village (Lidlington).

Within our village small "courtyard" style units would be in character and provide employment locally.

Small independent business/ industrial areas allow SMEs to start out and grow while supporting local employment.

At Junction 13 of the M1 but not as a ribbon along the A507.

But not as a ribbon development along the A507.

A shop/post office would be helpful in assisting local residents, especially the old and infirm, etc.

The area has plenty of large scale (Amazon?) units. Smaller ones would provide more local jobs for local trades.

Around Wharley End.

Small 'start ups' but the University of Cranfield already has an area for start ups - the innovation park.

However, unacceptable use of language has been omitted.

No incentive at present.

More independent local business/shops but parking is a major issue in Cranfield. No forward planning for a road system that works - congestion rains top.

There is ample opportunity to develop new businesses based on the expertise at Cranfield University.

Business parks need to be near the motorway for easy access.

More please.

Any empty properties for local shops.

Jobs for locals.

On the former brickworks site in Stewartby, preservation order on kilns and all but one chimney is daft.

A nice friendly local café/coffee shop.

Use areas near university to add business park/units that are associated to university and airfield.

University business parks connecting to others.

A small scale business park would provide local employment opportunities but not further parks, i.e. logistics, parks, which already cause problems with lorry 'stacking' on roads, pollution and traffic issues.

A small scale business park at Marston Gate could enhance job prospects for those living in Ridgmont.

Small start ups are useful, but the university already has these.

Small local retailers/services, e.g. doctor, dentist, post office, food store/chemist.

We need to make things to sell in this country. Not everyone needs to work on a computer. We need engineers.

Woburn Sands.

Woburn Sands near station.

No improvements needed in Millbrook.

No more industrial development south of Brogborough.

More diversity.

The growing population is not going to be well served by the very limited retail providers in the village - Marston Moretaine.

Our village is expanding at a vast rate and there are not enough shops to cope with all the new residents. Also another pub as village now too large for small local pub and need more places for community.

Local pub is required in Marston. Only one at present where there used to be two. Village has more than doubled in size since second pub has closed. Pub/restaurant.

Small start ups are the seeds that grow larger innovative businesses. A worthwhile development.

Crane company development. Also maybe more near to distribution centre near M1 south J13.

More shops etc. in Marston to match increased population.

High volume business parks and associated traffic issues are destroying our environment with the close proximity - High Street as such has been slowly destroyed by industrial development.

More businesses in the area needs.

Cranfield University has a small but expanding business park so there is space and opportunity to expand this area and bring employment to an area which is only a commuter belt at present for Bedford, MK and even London.

A dedicated newsagent and haberdashery shop would be a welcome addition to Marston Moretaine.

This field would be ideal for small start-up businesses of any type, for example software companies.

More shops and a café in the village would create jobs and improve socialisation.

We need more shops, including a coffee shop, in Marston.

Area between Wood End Road and new development.

More business innovation.

More local amenities and improvements to current ones.

Opportunities for small businesses to make a difference.

Small start-up offices will create local jobs, hopefully for local people.

Would like to see a coffee shop or social hub developed in Marston village centre. Village is expanding but centre is not.

Surrounded by warehouses already - please no more!

There is plenty of warehousing already!

Specialised industry to link in with Millbrook and Cranfield type employers, i.e. proving ground and uni (high tech) builds on proposed improvements to the Oxford - Cambridge corridor.

Business park development should be associated and correlated with housing growth. Employment locations should be placed to benefit from A421 and East West rail connections.

I think there is more opportunity to invest in smaller businesses as well as Cranfield University, Nissan and Millbrook.

No more High Street shops - parking is crazy already.

We are already surrounded by industrial parks (MK near M1) and near J13 near Ridgmont - any large scale developments would diminish the countryside/existing industrial balance - there may be opportunities to develop unused farm outbuildings to create small office start ups.

Not enough knowledge to be able to say.

Crumbs, hard to say. Fewer giant warehouses. Support for businesses in Flitwick.

More industry.

Selected in location outside the village envelope with good access onto highway without adding congestion to village roads.

Independent businesses, not multiples that are too vast in size and capacity, bringing further traffic problems.

Expand innovation at Cranfield. Other sites have also to be suitable but I am not aware of land owners wishes.

Jobs & Businesses continued

Area-wide need to foster rural diversification and support development of an environmental and leisure economy to broaden the economic base of the area.

Cranfield University idea for high tech businesses.

High quality high tech accommodation to attract employment and reduce commuters.

Small start-up hubs offering different opportunities to local people.

Small start-up office centres giving the opportunity for people to create and innovate new business. But small scale only.

Very expensive private land only.

Local retail enhancement would be a benefit. Don't need 2 supermarkets from the same branch! Co-op

Leverage entrepreneurial talent at Cranfield University to open business /start up centre in the general university area.

Growth. Why do we need growth? Why is growth important?

The High Street in Bedford is dying. I'm not sure what can be done about this, but it does not make it an attractive place to visit. We are surrounded by warehouses.

High value/high tech jobs - none of the above.

More places for businesses to grow.

A village shop to support villagers who cannot travel (under 17 and elderly).

Ridgmont not big enough for heavy traffic.

With use of junction 13 and A421. No need for retail.



Environment

Question: With your chosen type of environmental issue, please pin-point **one** specific place on the map table using your **green** sticker where you think there is an opportunity. Please expand below on what you would like to see at this location:

I can stand in my back garden and watch numerous numbers and kinds of fauna. Open spaces left as they are with new housing (infrastructure) developed taking the character of the countryside into consideration.

All five of these are vitally important, but the amount of air pollution caused by, in particular, vehicles using diesel, is a real danger to many people's health.

In developing open spaces we can use these areas to make buffers to the established communities. 'Flood risk' - for the Cranfield area this should not be an issue 'if' the local authority keeps drainage up to scratch.

Although Cranfield is comparably high within Central Bedfordshire area it recently flooded quite seriously with quite a few homes suffering physical damage.

Renewable energy has to be encouraged for the future. Developments should consider greater renewable energy - solar farm on Brogborough landfill.

To retain "village" status I would like to see green open space/wildlife habitats surrounding rural villages - so they do not creep closer and join next village.

The Thrift

Any new build or development should keep energy efficiency and technology in mind. This adds to the sustainability feel and move to future plans.

As Local Character

Limit or better reduce noise along M1 corridor.

Reduction of noise from M1 corridor.

As 'Local Character'

Building is encroaching everywhere - we need to remember our basic countryside.

Solar farms.

No turbines - visually affect landscape and public spaces with white noise. Protect our open spaces.

Stop erosion of existing open space by developers to detriment of local inhabitants and wildlife.

Open space is good for us all whatever age we might be. Away from noise.

Marston Thrift is an area of Special Scientific Interest, with many species of plants and animals that are not found elsewhere in the County in large numbers. It should be preserved and conserved. [I have worked in the Thrift as a volunteer since 1974.]

Woods, grasslands and farms are needed for dealing with pollution and for recreation.

Crawley Road.

Birds/worms//wildflowers.

Manage the Ouse.

Wind farm.

Same as Q1.

No more development between Marston and Cranfield.

Although up a hill, we had floods.

Air pollution in this area is very high, affecting the air quality and health of thousands of people. With asthma and other respiratory problems on the rise, all efforts should be made to decrease pollution where possible, therefore an increase, i.e. in traffic, both local and heavy would be very detrimental to residents and the environment.

The air quality around J13 of the M1 is very poor (in my opinion), mainly because of regular traffic jams. Levels of vehicles in the area need to be reduced not increased which will be the result of new development in the area.

No turbines - visually affect landscape and pollute nearby spaces with white noise.

Please liaise with all stakeholders to ensure flood reduction/prevention measures are implemented, monitored, maintained and reviewed. These are our homes! Hold the builders/waterways, etc. to account.

Hedgerows. Trees. Fields. Farmland. Keeping the rural nature of the area.

The wildlife in the area plays a huge part in making this area natural and beautiful. However, the countryside and farmland need protecting to allow wildlife to flourish.

However, unacceptable use of language has been omitted.

We need a few more wind turbines the same as the one at the Forest Centre.

Ridgmont area A507 in which Greensand Walk goes through!

Area along the A507 in between Ridgmont and Lidlington.

Footpaths should be looked after so people can use them.

No improvements needed in Millbrook.

M1 does not have quiet tarmac - white noise in Brogborough is horrific when wind from SW (most of time).

The more houses that are built in the area, will inevitably lead to greater areas of natural open space being decimated and concretised.

Enhance existing woodlands. Preserve open spaces. Enhance Greensand Ridge landscape by replanting.

As most of the green spaces are being built on we have already noticed a difference with the wildlife, e.g. deer much more visible not knowing where to go!!

Need to preserve existing open spaces especially footpaths and bridleway along Greensand Ridge.

Marston Forest Centre to expand towards Wallington. Trim trail required using walkways.

Motorway noise. Erection of noise barriers.

Ridgmont suffers with significant noise pollution from the M1. As traffic will increase there needs to be planting/structure to reduce the impact!

Few issues except recycling plant.

Concerned about waste incinerator in Stewartby and affect on air quality.

If developing in villages leave green space between development to keep village feel and encourage infill rather than major development which changes the village environment.

The placement of large industrial units so close to residential properties increases pollution on a grand scale.

Have more renewable energy to be more sustainable.

Preserve the existing open spaces for inhabitants and visitors use for exercise and thereby provide wildlife habitats, fresh air with a lack of air and noise pollution.

Area behind Cranfield Church could be used to plant more trees and expand the greenspace/woodland of Rectory Wood.

As a dog owner - I feel open space is invaluable. No more building estates. Also no building on flood plains.

I am very concerned about the extra noise and vibration likely to be caused by the lorries servicing the new Covanta incinerator (my property is beside the old A421).

Pollution that will be caused by the building of the incinerator by Covanta and additional traffic this will cause.

Very concerned about incinerator regarding pollution from the increased traffic from lorries, also from incinerator itself.

Very concerned about the waste disposal/Covanta and the impact on air and noise pollution from all the lorries and incinerators.

I cannot think of anywhere where such a large could be situated in or near Marston.

Love the village life and don't want it becoming a town, and large estates, business parks and eyesores popping up.

Open space must be preserved for all, nature must be protected for us all.

Building more houses creates more noise and pollution so maintaining open spaces will avoid this and help reduce the flood risk.

Do not accept land adjacent to A507 for proposed development. This is beautiful open countryside criss-crossed by ancient footpaths (Greensand Ridge Walk).

With additional building, this moves water from natural flood plains, so the water moves up or downstream and causes damage and destruction that has not been planned for.

Marston Moretaine Forest Centre is a huge asset and needs to be nurtured and protected.

Waste incineration.

Protected habitats for wildlife. So much of Marston Vale is now being used for warehousing, wind turbines, possible incinerator ...

Maintain as much green space as possible to help with diversity of wildlife and keep the countryside.

Regional scale habitat creation including woodland, water based and open grassland.

Wildlife habitats are very important. We have this advantage over Milton Keynes and Bedford.

High Street, Cranfield is traffic pollution in excess.

Over 30 years the building of high distribution units on industrial and business parks has led to an increase in both noise and light pollution. There should be a distinct separation (by distance) between any new industrial developments and any house building developments. You missed out pollution (light).

Habitats and green infrastructure mitigate air and noise pollution and flood risk. They can also supply renewable energy. We are in a community forest so wood fuel should be central to our local character and ethic.

Recent flooding within Cranfield - block drains, drains unable to cope. If more houses/businesses are going to be in the area how will current infrastructure cope?

More/expansion of Marston Vale Millennium Park.

Improved farmers fields with less chemicals and intensive farming!?

No pollution enterprises given planning permission, e.g. incineration.

Pinch point on the A4121 separating Caulcott and Lower Shelton. A willow sound barrier to blend and grow with the landscape.

Protection against flooding with a view to providing habitat for wildlife. Ground is becoming worse each year.

Environment

Question: With your chosen type of environmental issue, please pin-point **one** specific place on the map table using your **green** sticker where you think there is an opportunity. Please expand below on what you would like to see at this location:

Develop flood risk areas into linked paths that join Hulcote and Salford. Regenerate Salford Mill into a nature walk area.

Area-wide opportunity for major environmental regeneration through the ongoing creation of the forest of Marston Vale.

Hulcote Wood should be an SSSI.

Increase wetland and leisure.

I want to see existing protected open spaces protected, and left for agriculture and wildlife. With the growth of Milton Keynes, it feels like our natural landscape is being encroached and swamped by housing and the wildlife is losing out.

I would like green belt areas and wildlife to be protected, and totally protected! You can add the concrete everywhere but you cannot reverse the effects. WE MUST PROTECT OUR GREEN BELT.

Too much of our open spaces are diminishing.

M1 noise pollution and bypass traffic currently degrading environment. Light pollution too has been a marked change last 10 years.

Enhance the Marston Vale Forest to provide corridors through Rookery south pit towards Houghton Conquest.

Brogborough landfill site. This is being turned over to a great rural space with plantation. Do not re-industrialise. Open and make clear the access to footpaths.

We need open space, not more building.

We need to protect our rural areas - Milton Keynes is joining up with Bedford - who agreed that? How can we feed ourselves if farmland is built on? Surely we should not be planning to import all our food?

There is chaos at J13 roundabouts creating more noise and air pollution than ever before.

Open footpaths on Brogborough landfill site.

More provisions/solutions to carry flood water away from built up areas. Not sure what the solution is, but something needs to be done!

Clear kerb drains to allow rainwater to run into ditches.

Would like wildlife habitats unspoilt.

Would like to see any local wildlife habitats left untouched.

Homes

Question: With your chosen type of Home, please pin-point **one** specific place on the map table using your **purple sticker** where you think there is an opportunity. Please expand below on what you would like to see at this location:

New bungalows for the elderly or supported accommodation.

It would be good to have more bungalows and good sheltered accommodation for senior citizens who wish to downsize, which would mean more older houses for young families to move into.

All of the above!

Cranfield has had medium major developments in recent years, some still ongoing and one to be started! I lived through a period when Council provided housing was a norm. Private developers need to fill the gap.

More facilities needed for older people who don't want to move out of the village. Allow sheltered accommodation.

We have insufficient low-cost starter homes for those "born and bred" in the village who are unable to rent or buy.

Sustainable homes in keeping with the characteristics of the surrounding area. Many who have grown up in the area are having to move away or downsize. Having a mix of new, renovated and converted will benefit those old and new to the area.

WITHIN the existing village envelope.

New homes should be focussed in the larger villages and towns, where there are existing facilities.

Concentrating on the large towns and villages with the infrastructure needed, i.e. schools and hospitals.

Restricted building of dwellings - NOT in the £1m+ bracket.

The only suitable housing is that which will suit the employment of the locality otherwise we are all "commuter" villages.

Homes will be at max for Cranfield - no more.

I can say that sheltered housing would be required but should be included in development, e.g. the required Health Centre which it could help fund (flats).

However, unacceptable use of language has been omitted.



No existing safe housing for elderly inhabitants who wish to downsize without leaving the area, thus releasing larger properties.

I chose older generation as they can be 'stuck' in a large house with a lack of opportunity to downsize to an acceptable property. Too few bungalows being built. When a bungalow is sold, invariably they are developed into a house - reducing the bungalows available. More brown field sites should be developed with help from central government.

There is no reason for locating any more new homes in Cranfield. The infrastructure is already overloaded. Affordable new homes are needed where there is better infrastructure.

More homes for the younger generation.

Anywhere within Cranfield.

All of the above in mixed development.

Keep youngsters in area.

Starter homes are just a cash cow for developers and solicitors. Need family homes that can be bought by first time buyers.

Wages have not matched the rises in house prices.

Though there is too much development in Cranfield without suitable infrastructure, a higher percentage of affordable homes is required.

New starter homes, although this does not apply to myself.

Frankly, with the demographic of society, a mix of all of the above choices is needed. Approximately 50% of people live alone, for various reasons, and homes should all be more 'affordable' at all life stages. I do feel, on balance, that more properly sheltered accommodation is needed for the aging population, especially in the face of such extreme funding cuts in the NHS social care and benefits.

There needs to be some 'sheltered' homes in the Ridgmont area, especially in view of the aging population and continual cutbacks in district social care.

Possibly more homes for the older person who is independent.

Young families need reasonably sized homes with adequate parking and play spaces. See Marston Park as an example of "too narrow" streets, no community centre, no playing field and high prices.

No desire for a large housing development for Ridgmont.

Warden controlled housing.

Woburn Sands/Amphill for new homes.

As part of the expansion of the current plan near Amphill (near station) or Woburn Sands (brickworks) (near station).

No homes needed in Millbrook.

Mixed development (not any one of the above) - hopefully the village envelope (settlement) can be extended to bring in outlying settlement hubs.

I see very little evidence within this village - Marston Moretaine - of the developers paying much if any attention to the need for affordable housing 4-5 bed properties seem the norm!! Where are the bungalows??

Only very small developments not above 25 homes. No large settlements. Preserve rural character of village communities!

Bungalows for the elderly in the village.

Small developments only of around 20/25 properties required. Protect and preserve local character of villages like Ridgmont.

Not enough bungalows catering for elderly/less able persons.

Ridgmont could benefit from SMALL limited development to add new people to the village which is currently stagnating with also a very good school.

We now have enough homes I think.

Need to ensure S106 do not time out especially re: healthcare facilities.

We need homes in our community. We have already asked so many times for our village envelope to be extended so that more homes can be built giving us more of a change to improve our community.

Big demands for homes.

Instead of new developments just producing 4/5 bedroom homes - bungalows are needed, as are affordable homes for first time buyers and new buildings should be more spaced out.

There seems to be a shortage of bungalows for the elderly in the area. These would need to be close to local shops and a medial centre. A bus service nearby would also help.

We need all types of homes that are affordable for everyone.

There is an aging population that needs to be catered for. We also need family and affordable homes to encourage families to move to area.

We have had so much new housing without improving local services, e.g. GP surgery and a few more shops.

Anywhere near the edge of the village as long as shops were accessible.

There's not enough properties for as above residents.

More affordable homes that are already built, not always "new builds".

Homes need to be affordable so that the chain upwards can be smoother.

the new estates in Cranfield are still too expensive for most young couples who have always lived in the village. This forces them out. Affordable homes would avoid this if locals were given preferences.

No new homes are required.

A lot of new homes are small and very, very expensive for anyone to afford. Our youngsters will never be able to get on the property market and rents, private and otherwise, are too high.

Homes continued

Family homes are needed to build community. Decent amount of parking and bigger gardens needed.

A percentage of 1 and 2 bed properties for older people.

Don't need more homes until infrastructure is greatly improved.

No more houses needed at present.

Central Beds is a growth area with existing high prices and limited housing stock so for younger generation affordable but sustainable housing a must.

The Local Plan should seek to meet Central Bedfordshire's housing need. This can most sustainably be accommodated through new settlement allocations.

I have grown up in Cranfield and love the natural beauty of the area but can't afford to live there.

Respect for listed buildings.

There is a lack of family sized homes being built (i.e. 2 parents, 2 children). Too many high density flat builds does not solve the housing difficulties people face. Affordable homes is a lovely idea but a fallacy. Villages without infrastructure cannot be sites for affordable homes - as usually no shops, bus services within easy reach.

I think more single living homes are needed, but designed to accommodate home businesses (e.g. with a den or small office with telecom connections) - not all small businesses can afford or should need to hire an office, which requires travel (usually by car).

Large developments (off Mill Road) increase in population, no additional infrastructure for development. One road in/out means congestion, pollution. Local amenities are stretched already.

Homes for first time buyers and local people.

If there is to be building houses please could we have them using traditional old style brick and roof colours!

By AFFORDABLE homes meaning more social housing to rent for young and old.

Use of vacant and surplus land with good access to infrastructure offering good quality housing.

Rooktree Farm is an example of rural employment space that would ideally suit the accommodation of a family residence.

Salford has scope for small number (<8) additional family homes to sustainably grow the village community.

Opportunity for ultra-sustainable, zero carbon development that serves as exemplar and guides new vernacular.

Home types that meet local needs and not some government quota.

I personally wouldn't want housing in the local area, but if more housing is built then I'd like to see affordable homes and to make sure heritage and protected land are not built on. Houses should be in keeping with the local architecture and heritage of our area.

We all recognise the need of new homes, but it's the volume proposed that is extremely scary as the infrastructure is just not there. Affordable homes would be the preferred option but in much smaller scale.

This is not a question that allows for the answer - no more development in our village of Ridgmont.

None - environment is seriously under threat. Must be protected and green!

Lower Shelton - access to Marston Moretaine and Wootton.

There are lots of new houses coming into Cranfield. I want to make sure that future new houses are spread appropriately across the area.

We need affordable homes. But we don't want more building. We need sensible population planning (immigration, etc.) not a free for all.

We don't need ANY more houses until infrastructure is sorted out. Greenspace MUST be protected. Social housing for local residents that need it.

Do not allow "hit and run" developers. No adoption = no future planning grants.

More houses.

Be able to use family land to easily build on to start a family.

To allow children of land owners to build a single dwelling each on family owned land, as land owning families having to buy, not build, even though they already own the land and further contributing to housing shortage.

For helping youngsters get on the housing ladder.

Affordable properties that young families can afford to buy.

All needed especially new starter and affordable.



However, unacceptable use of language has been omitted.

Growth & Infrastructure

Question: With your chosen type of Infrastructure, please pin-point **one** specific place on the map table using your **orange sticker** where you think there is an opportunity. Please expand below on what you would like to see at this location:

New middle school for the rapidly expanding Marston community.

For Cranfield and Marston, in particular, the healthcare situation has greatly worsened in the last few years when the population has increased considerably - a new surgery in Cranfield, properly staffed, equipped and funded, is desperately needed. More leisure facilities needed for youth in Cranfield.

Cranfield Surgery only has one partner at the present time and, although a site for a new surgery exists, no action seems to be happening. Patients on a 16 max/day at present, queuing in all weathers from as early as 7.30 a.m.

Secondary schooling.

Access to health services is a big problem especially with lack of public transport.

We desperately need GP and healthcare services for our community. Currently there is no public transport to the overstretched facilities.

With all the new development one small surgery is not enough. There is no dentist or health centre.

Cranfield Surgery is overused, under staffed and not able to keep up with demand as is, let alone with further population growth.

Would be nice to have gas and decent broadband.

Need quality schools! 2 tier system needs to be introduced.

Good quality schools and a two tier system instead of three in alignment with the rest of country.

Provision of mains gas; improvement of drainage; adequate broadband!

Very important and appears to be last thing to be considered.

Healthcare for Cranfield.

The village of Cranfield is expanding by 40% - there is one surgery which is overwhelmed (one full time doctor). There is a site for a new health facility but NO NHS funding.

Totally inadequate doctors surgery/healthcare facilities.

Please, please, please develop a decent doctors surgery in Cranfield. I would imagine no young doctors, nurses, office staff would choose to work at Cranfield surgery when new housing developments with doctors surgery is just a few miles down the road. DO NOT PUSH THIS TO ONE SIDE. Please sort it. I obviously feel strongly on this. The health of our people is paramount.

Over-burdened doctors surgery.

Cranfield desperately needs a well-designed, modern doctors surgery comparable with the Newport Pagnell Medical Centre.

Healthcare is a major issue in Cranfield. A new surgery and clinic is needed for the expanding population.

High Street area.

Medical staff! Schools - government chairs. Keep 3 tier system comprehensive. No Grammar. Village needs a family restaurant/café. Country Park is excellent but too far out of village.

Healthcare centre promised but never came about.

Healthcare centre promised for Cranfield. Hurry up, I haven't got long to live.

Additional doctor surgery/clinic.

Decent leisure/community centre to replace the village hall and sports pavilion in Marston.

Brickworks site.

A new health centre is desperately needed.

A new health centre was planned with last lot of building. It did not happen.

Communities need a central point, a meeting place, a focus for its residents to become a community. I feel that, in Ridgmont, a community centre might provide this opportunity but also address the isolation which many people might feel. It can be used to provide health education, recreation, further education, i.e. lifelong learning, etc.

Healthcare facilities for those in the Ridgmont area are already over-stretched. There is a lack of professionals in the NHS and the building of a new "health centre" for, e.g., a new village/town does not automatically mean that it will be adequately staffed.

Cranfield is awash with new development throughout the village - what about the local surgery in a converted 19th century house? One full time GP, the rest locums, lack of nurses, etc.! DIABOLICAL.

Primary healthcare provision, e.g. GP capacity is lagging behind housing growth. Please ensure the support services are in place before implementing/permitting new homes to be built. Condition of planning permission perhaps?

With the ever growing population in Marston the current health surgery/dentist cannot cope.

Woburn Sands or Flitwick.

Mobile phone coverage.

A nice leisure centre with pool would be nice in Woburn Sands on the site of the old brickworks.

No improvements needed in Millbrook.

Children's play area.

The growing population of Marston Moretaine is served by one GP practice - where if there is one GP on call - only 16 patients can be seen. There seems to be desire by the local authority or developers to address this issue.

I have ticked 4 as we are lacking in all these facilities. Our doctors is a joke, you can't get in to see anyone without waiting for 3/4 hours. The schools are full and more housing means no room for the new residents. The shop is not enough for size of village and in desperate need of another pub!!

A community centre/village hall is good to promote village life and village cohesion and Ridgmont does not currently have one.

Growth & Infrastructure continued



Cannot just have one as we lack all of the above in the village as it has grown so much. Too many people not enough services.

I attend Ampthill surgery and very concerned regarding accessibility once new developments completed in Ampthill. It is extremely difficult now to obtain appointments and virtually impossible to park at the surgery.

We use Ampthill Health Centre which is currently very busy and difficult to access - particularly with regards to parking but also obtaining appointments. With the increase in developments in and around this town there surely MUST be a plan to improve the centre facilities. When a developer wants to build on an area why is he not forced to build a new health centre as part of the planning consent?

Doctors surgery needs expansion.

More shops, cafes needed.

Beware allocating developments to a "service centre" which is not coping with current needs prior to such future development and ensure S106 are honoured.

Poor broadband facility, drainage issues (including foul) and water supply issues (70+ year old water supply pipes are failing).

Swimming pool.

The current problem with healthcare in the community is not the lack of a modern building but the lack of doctors to service the community and the lack of continuity due to the use of locums.

Marston Moretaine has had such an increase in population - is desperate for more medical provision.

Faster broadband would be an asset for growth.

I believe that an additional school is needed as more and more families move into the area. However, all infrastructure facilities need to be updated.

A community centre on Marston Park, as promised, would encourage more togetherness and socialisation in the village. Also a middle school would mean less children having to take the bus.

Marston - increased shops need more parking.

A much larger facility for a doctors surgery is badly needed due to the huge increase in the number of houses already built.

There's no swimming pool, gym, etc.

Another doctors and dentist would be great, the current one is oversubscribed and not as viable as it was.

More homes being built but no further provision within healthcare surgery at bursting point.

A new doctors surgery is badly needed in Cranfield. A site has been offered, but there are insufficient funds to build it.

Our village schools (Ridgmont, Aspley Guise, historic Crawley) are vital to our village life and lives of our children. Do not allow new developments which will close down our schools.

Bedfordshire rural suffers from not having fibre optic broadband and outages regularly in the area.

This is the biggest issue for our family. There are not enough good school places. Schools need to improve and expand and we could do with a grammar school in Central Beds.

Brogborough needs a small shop.

Faster broadband ... please ...

With new development and depending on size/amount of housing all of the above options would be needed.

New schools can best be delivered through new settlements which present opportunities for sustainable transport to school locations from new neighbourhoods.

Healthcare and education for all is very important. Especially with our expanding population. There also needs to be more opportunities for YOUNG PEOPLE! Including NEETs!

Shelton Lower School. No more budget cuts. A small school, ideal for shy, quiet children to begin schooling. Very sought after. Aged "temporary" buildings need replacing with brick built accommodation.

Need to replace healthcare that has been lost in Cranfield due to university and NHS. Not agreeing to continue to finance a surgery on the university campus. One existing doctors surgery cannot cope with the increasing student population and new house builds being made in Cranfield.

The local surgery is terribly oversubscribed - it should not take a month to get an appointment. I think the staff do what they can, and the online services have been very helpful but the surgery is straining to keep up with demand.

Current doctors surgery is not fit for purpose, large queue everyday before it opens, very difficult to get an appointment. Dental practice unable to take new patients as they do not have capacity.

Play areas - open space.

Tricky.

Small fitness/sport hall similar to Silsoe.

Cranfield village in dire need of new surgery to cater for large elderly population and families and students from abroad attending the university and plus growing families moving in to houses given planning permission vastly exceeding infrastructure.

Increased facilities in new large scale housing sites.

Constant 'weekly' power cuts. Broadband a necessity.

Fibre broadband is needed in Hulcote and Salford.

Area-wide need for more outdoor leisure opportunities which make use of the growing forest resource.

Cranfield healthcare facilities need addressing urgently.

Shops - individual not corporate.

However, unacceptable use of language has been omitted.

With the amount of new homes proposed, this would put an even greater strain on our local doctors/ dentists and hospitals, etc. New healthcare alternatives would have to be considered, in order to deal with the greater demand of people in the area.

Any new development will need to have adequate new healthcare provision - doctors surgeries, dentist, hospital.

High speed internet is only requirement.

High speed internet.

Healthcare facilities are under-resourced in Marston Moretaine due to increased development. Opportunity for local dentist and greater number of NHS doctors required for sustainability reasons.

Easier and quicker access to the GP. No need to queue outside in all weathers before 8 a.m.

Services need to be placed where the people need them. Reduce travel and pollution.

All of these are important and it's insulting that demand is growing much faster than supply and the situation will become worse. What is happening about Bedford to MK canal link? It seems to have been built over.

There is one shop and one hairdressers in Lidlington. We need more facilities.

Build affordable houses where there is transport and community.

A modernised and suitably-sized surgery that can take the pressure off the existing surgery, which isn't up to scratch.

Better healthcare facilities in Cranfield.

More places for a closer, less busy doctors surgery.

Fibre/high speed internet!

More needed to support all growth ...



Appendix - Supplementary Questions on Feedback Form

Thank you for responding to this consultation.

Your views will help us to shape the Community Plan that will inform the Local Plan, influence development decisions and help direct investment where it is needed. There will also be other opportunities to comment on the Local Plan as it is developed. There will be an opportunity to express your views in more detail at the next stage.

Please answer the following questions:

Gender: Male Female Age range: Under 18 18-25 26-35 36-45 46-64 65+

What postcode do you live at? _____

Which town/village do you shop at most often? _____

I am a local resident I am a Town or Parish Councillor for _____

I am an organisation representative please state _____

Which town/village do you work in (if applicable)? _____

Do you consider yourself to be disabled? Yes No

To which of these groups do you consider you belong? White British Black or Black British
 Asian or Asian British Mixed Chinese Other Ethnic group (please write in) _____

Would you like to be informed of the arrival of the Consultation Draft of the Community Plan for your area? We can notify you of its publication.

Be assured that your personal details will not be published in any report or passed to a third party.

By post or email

Name: _____

Address _____

Email: _____

Please tick if you would like to be kept informed of Local Plan Updates.

After completing this feedback form please place in box at front door.

Or post back to us at Local Plans, Priory House, Monks Walk, Chicksands, Shefford, Bedfordshire SG17 5TQ

Data Protection Act 1998 Please note that your personal details supplied on this form will be held and/or computerised by Central Bedfordshire Council for the purpose of the Local Plan. The information collected may be disclosed to officers and members of the Council and its' partners involved in this consultation. Summarised information from the forms may be published, but no individual details will be disclosed under these circumstances. **Your personal details will be safeguarded and will not be divulged to any other individuals or organisations for any other purposes.**

Sign up for email updates ...

 www.centralbedfordshire.gov.uk/localplanupdates

More information on the Local Plan can be found here...

 www.centralbedfordshire.gov.uk/localplan

Appendix – Supplementary Questions Summary

Public Consultation Marston Attendees Record

Response	Gender	Age	Res/Cllr/Org	Disabled?	Ethnic Group
Response	Male: 64 (50.0%)	Under18: 0 (0.0%)	Resident: 118 (89.4%)	Disabled-Y: 6 (4.5%)	White British: 78 (98.7%)
	Female: 64 (50.0%)	18-25: 1 (0.8%)	Councillor: 23 (17.4%)	Disabled-N: 126 (4.5%)	Black or Black British: 0 (0.0%)
	Unknown: 0 (0.0%)	26-35: 9 (7.1%)	Organisation: 10 (7.6%)		Asian or Asian British: 0 (0.0%)
		36-45: 11 (8.7%)			Mixed: 0 (0.0%)
		46-64: 53 (41.7%)			Chinese: 0 (0.0%)
		65+: 53 (41.7%)			Other Ethnic Group: 1 (1.3%)
Nothing Recorded	14	15	10	9	11
Total	142	142	142	142	142

Homes

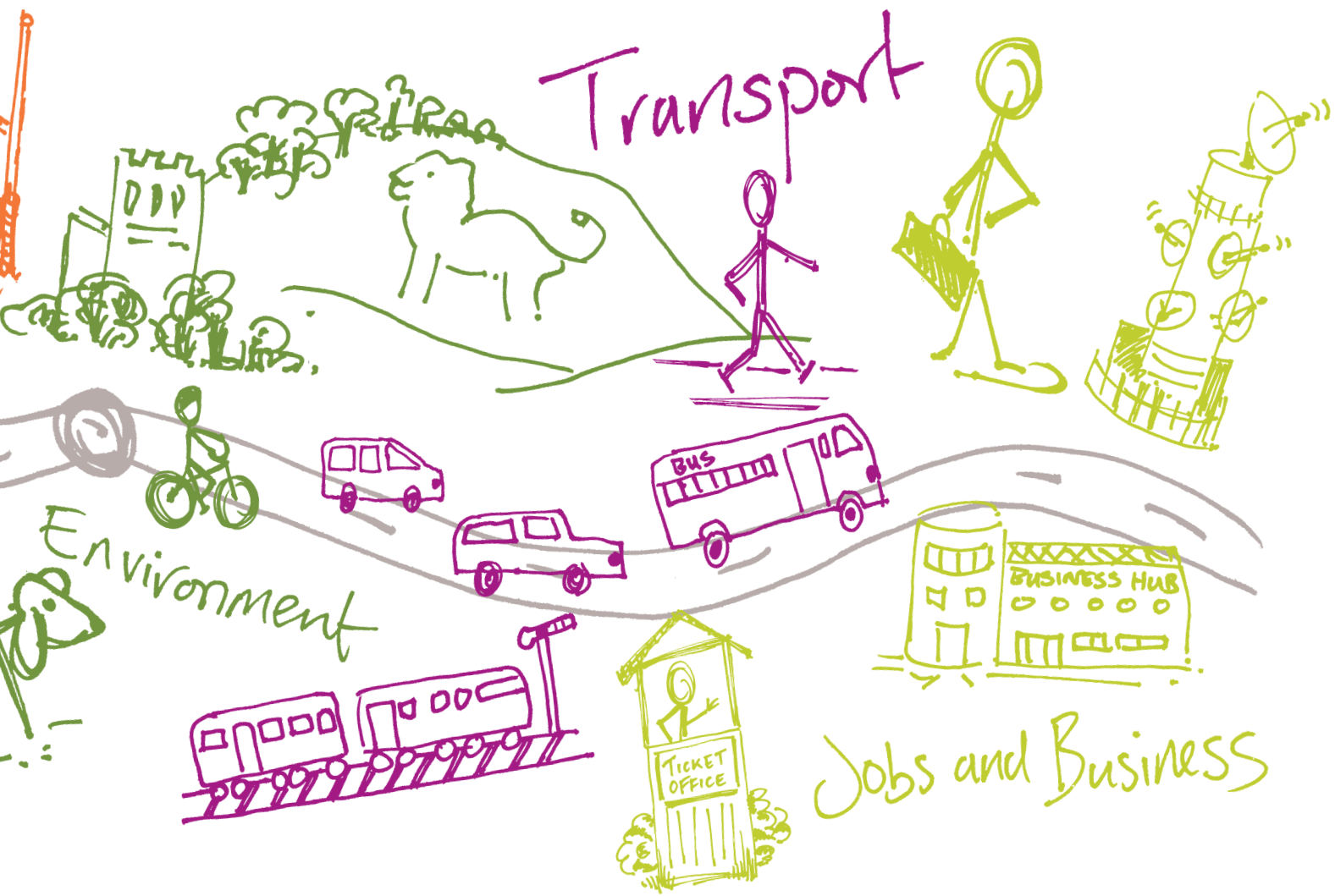


GROWTH & Infrastructure

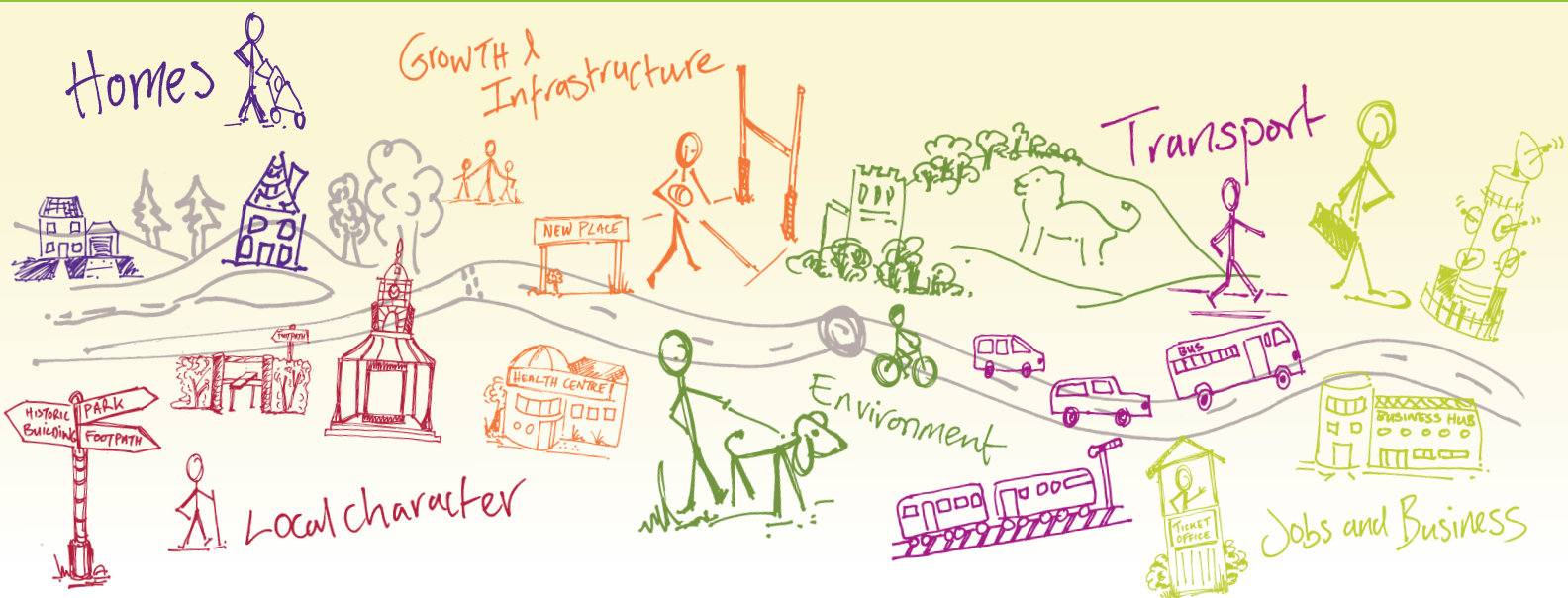


Local character

A great place to live and work.



Shaping where you live 2035



What happens next?

Community Planning is a continuing process and this Community Plan, which collates all the information gathered at the event, is the first time this type of information has been collected. There will be a series of actions arising from the Community Plan which are likely to influence or shape planning policy in the Local Plan, decisions on planning applications, and decisions on where money arising from development should be spent. These actions are identified in total within the 'Overview Statement of Community Planning' which details how they will be dealt with. Central Bedfordshire Council will seek to work in partnership with organisations including Town and Parish Councils, developers and other agencies to deliver on these actions.

For more info on community planning ...

www.centralbedfordshire.gov.uk/community-planning

More information on the Local Plan can be found here...

www.centralbedfordshire.gov.uk/localplan

Disclaimer Central Bedfordshire Council is the statutory Planning Authority for the area and therefore is bound by legislation and must have regard to government guidance on planning matters.

Community Plan produced in consultation with Central Bedfordshire Council supported by www.lda-design.co.uk

This document contains:

Contains OS data © Crown copyright and database right 2016
Contains Royal Mail data © Royal Mail copyright and Database right 2016
Contains National Statistics data © Crown copyright and database right 2016

Central Bedfordshire Council:
© Crown Copyright and database right. 2016 Ordnance Survey 100049029

Central
Bedfordshire

A great place to live and work.