

Appendix

Community Plan

Covering the parishes of Battlesden,
Eggington, Heath & Reach , Hockliffe,
Leighton Buzzard

Community Area 3

This Community Says...



Appendix -Feedback Form

Local character

What we have we love. Our history, countryside and communities. We need to build, with care to enhance what we have.

NO ISSUES

Please select **one** type of Local Character from the list below that you would most like to see protected or improvements made within your local area:

- A. Built Heritage (e.g. ancient monuments, old buildings, memorials)
- B. Landscape Heritage (e.g. historic parks, protected landscapes)
- C. Open space natural (e.g. countryside, nature reserves, viewpoints)
- D. Open space man-made (e.g. parks, common land, village green)
- E. No improvements

With your chosen type of Local Character, please pin-point **one** specific place on the map table using your **red** sticker where you think there is an opportunity. Please expand below on what you would like to see at this location:

Transport

How do we get around? With more of us on our cycleways, roads, rail. How do we improve & maintain our transport links?

NO ISSUES

Please select **one** mode of travel from the list below that you would most like to see improvements made within your local area:

- A. Vehicular
- B. Bus
- C. Train
- D. Cycle
- E. On foot

With your chosen type of Transport from above, please pin-point **one** specific place on the map table using your **pink** sticker where you think there is an opportunity. Please expand below on what you would like to see at this location:

Jobs and Business

Where will everyone work? Supporting local businesses to grow & attracting new business. We need to create jobs for all.

NO ISSUES

Please select **one** type of Business from the list below that you would most like to see investment in to improve business or jobs in your local area:

- A. Industrial parks
- B. Business parks
- C. High street development
- D. Local retail units
- E. Small-start-up office centres (innovation hubs)

With your chosen type of Business from above, please pin-point **one** specific place on the map table using your **lime sticker** where you think there is an opportunity. Please expand below on what you would like to see at this location:

Environment

**Our environment is important. It influences how & what we create.
We need quality development.**

NO ISSUES

Please select **one** of the Environment types from the list below that you consider the most valuable attribute to look after for the future within your local area:

- A. Renewable energy
- B. Pollution (Air)
- C. Pollution (Noise)
- D. Open Space - wildlife habitats
- E. Flood risk

With your chosen type of environmental issue from above, please pin-point **one** specific place on the map table using your **green** sticker where you think there is an opportunity. Please expand below on what you would like to see at this location:

Homes

Homes for every stage of life. A house is not a home until it's lived in. We all need a home we're proud of.

NO ISSUES

Please select **one** of the types of Homes from the list below that you consider are needed within your local area:

- A. Older generation (downsizing/sheltered)
- B. Single living (lifestyle/separation)
- C. New starter homes
- D. Family homes
- E. Affordable homes

With your chosen type of Home from above, please pin-point **one** specific place on the map table using your **purple sticker** where you think there is an opportunity. Please expand below on what you would like to see at this location:

Growth & Infrastructure

**Where to place homes & services. Supporting market towns, villages & new settlements.
We need to plan places to grow communities.**

NO ISSUES

Please select **one** Infrastructure facility from the list below that you consider is most needed in your local area:

- A. Healthcare
- B. Schools
- C. Retail
- D. Community Centres
- E. Leisure facility (leisure centre, play areas etc.)
- F. Utilities improvements (telecoms/electricity/gas/foul treatment)

With your chosen type of Infrastructure from above, please pin-point **one** specific place on the map table using your **orange sticker** where you think there is an opportunity. Please expand below on what you would like to see at this location:

Appendix - Feedback Form Summary

The following data for Community Area 3 was collected at the event held on Wednesday 1st February 2017 at Leighton Buzzard Theatre from 2:30pm until 7:30pm using questions from the feedback form illustrated on the previous page.

Feedback Form Summary						
Response	What would you most like to see protected or improvements made?	Local Character	What would you most like to see improvements made in?	Transport	Would most like to see investment in to improve business or jobs?	Jobs & Business
No Response		2		6		10
A	Built Heritage (e.g. ancient monuments, old buildings, memorials)	41.3	Vehicular	61	Industrial parks	8
B	Landscape Heritage (e.g. historic parks, protected landscapes)	16.3	Bus	68.5	Business parks	11
C	Open space natural (e.g. countryside, nature reserves, viewpoints)	101.8	Train	4.5	High street development	116.5
D	Open space man-made (e.g. parks, common land, village green)	20.3	Cycle	29.5	Local retail units	17.5
E	No improvements	5.5	On foot	20.5	Small-start-up office centres (innovation hubs)	26
F	No F question on this theme	0	No F question on this theme	0	No F question on this theme	0
Nothing Recorded		19		16		17
Total		206		206		206

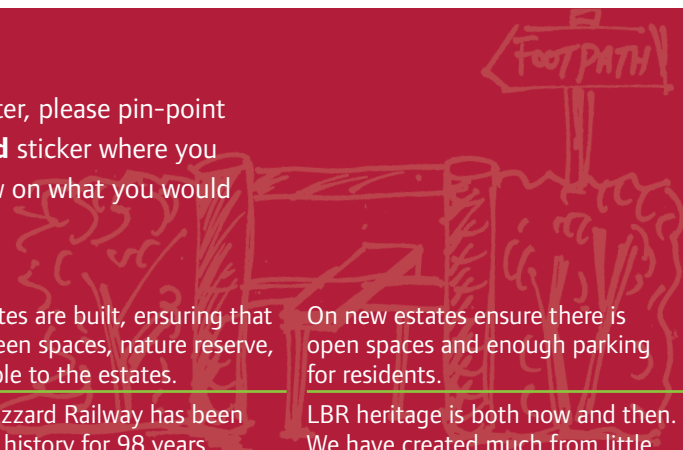
What do you consider the most valuable attribute to look after for the future?	Environment	Which you consider are needed the most?	Homes	Which you consider are needed the most?	Growth & Infrastructure
	6		14		5
Renewable energy	63	Older generation (downsizing/sheltered)	41	Healthcare	87.2
Pollution (Air)	20.3	Single living (lifestyle/separation)	12	Schools	7.7
Pollution (Noise)	4	New starter homes	19	Retail	36.7
Open Space - wildlife habitats	80.3	Family homes	19	Community Centres	16.2
Flood risk	16.3	Affordable homes	80	Leisure facility (leisure centre, play areas etc.)	23.2
No F question on this theme	0	No F question on this theme	0	Utilities improvements (telecoms/electricity/gas/foul treatment)	14
	16		21		16
	206		206		206

Note:

The public were instructed to only tick one category for each theme. Where an individual ticked more than one category, their choices are divided evenly across the categories.

Local Character

Question: With your chosen type of Local Character, please pin-point **one** specific place on the map table using your **red** sticker where you think there is an opportunity. Please expand below on what you would like to see at this location:



Old structures must be protected and maintained for future generations to enjoy.

Lake, ponds, habitat for birds.

Any of our open spaces so valuable to health and wellbeing especially in Linslade.

The Riverside Building has great character but has progressively degenerated under C Beds. It could provide a great community focal point, e.g. café, heritage centre, business start up, events.

Improve buildings in the town centre. There are some beautiful buildings that should be maintained better.

Maybe some lighting and picnic benches.

All open space.

I have picked one but all should be improved.

Renovate the Market Cross.

Maintenance of High Street, traffic free would be a good idea. Better for people and old buildings, etc.

LB's heritage is being short-changed. To make a start put plaques identifying: the Market Cross; Cedars House; Lloyds Bank (site of a medieval guild building); Barclays (once Bassett's Bank); Morgan's Carriageworks (now Tesco's) where Vimy Bombers were built - AND THAT'S FOR STARTERS!

We need to follow the habitat targets in the biodiversity action plan updated by the Greensand Trust. We need nature in the urban area. LB is a case study for the national pollution strategy. We need nature in built up area.

Town centre heritage tourist attraction.

Heaths Reach particularly areas of the sand quarries.

Rushmere and Stockgrove provide our community with valuable open space where children play, older people amble and animals live. It also brings people from other towns so brings income. Do preserve and enhance this.

Tiddenfoot Waterside Park needs visitor facilities: loos 1st, visitor centre 2nd, refreshments 3rd.

As new estates are built, ensuring that there are green spaces, nature reserve, etc. accessible to the estates.

Leighton Buzzard Railway has been a part of LB history for 98 years. The whole of the railway needs to be protected from being swallowed up in future development.

Preserving local buildings/monuments will help to retain local character. I think Leighton Buzzard needs an Arts Centre (bigger and better than the library) to support the arts - especially VISUAL ARTS - this is woefully lacking in a town of this size. Need a local museum too.

Continue to preserve the nature reserves and the countryside and develop where appropriate.

Keep the new forests for people to roam in!

Eggington. Keep "Pecks" Forests.

Keep the High Street a welcoming place for people on foot, keep the scale, keep new building appropriate and not just cheapest build (profits the developers rather than town).

High Street - maintain human scale; retain historical connections; keep the location interesting for residents and visitors; keeping retail focus is part of this; avoid cheap out of character new build, focus on appropriate architecture for above points.

Clear fowl free footpaths.

Make provision to control vandalism. Make provision to keep areas tidy. Give thought to control of criminal behaviour.

These need to be maintained and improved as has been done in Rushmere.

Low density and more open spaces in all new housing areas.

See Environment (same thoughts).

Maintenance and improvement of the Rushmere Park facilities.

No gypsy encampment.

Linslade Wood/Old Linslade (the locally designated site of landscape value) - removal of inappropriate developments approved by South Beds District Council.

On new estates ensure there is open spaces and enough parking for residents.

LBR heritage is both now and then. We have created much from little over the last 50 years. To grow that opportunity is best in the area it reflects.

Tidying public footpaths, clearing obstructions and maintenance of bridges.

The town should be completely surrounded with green space - i.e. a real green wheel, where there is no development - plus places left for wilderness areas.

Protection of Linslade Wood.

Protection and continued development of the resources and facilities to assist use and education sustainably.

Linslade Woods.

Buy up land in Ozel Meadows beyond Pulfords school and open up for leisure, recreation and community use.

More protection for conservation areas/listed buildings from poor signage, unsuitable windows and materials.

In the older part of Leighton Linslade.

We are losing precious wildlife and climate change habitat at a horrific rate. We need to keep as much as possible of Chamberlains Barn Clipstone Brook, _____, etc. as we possibly can.

Joint action with Aylesbury Vale to secure Green Belt status for areas on west Linslade borders - will help resist speculative developments in the future.

Valley Farm should become a nature reserve.

Do not build in green belt and flood plain.

It is important to preserve the green belt around Heath & Reach. In particular the erection of a 2nd giant wind turbine is over development and wrong.

The area around the brook is green belt and a rich habitat for birds and other wildlife.

However, unacceptable use of language has been omitted.

Heritage Centre and museum to present LB and Linslade's unexposed heritage. Peacock Alley/Mews part of oldest buildings in LB? Market Cross, etc.

Extension to the LB Narrow Gauge Railway with a museum to the town's sand industry and renovation of the old stables at Stonehenge works.

Overall, protect open natural countryside, reserves and viewpoints.

Preservation of existing landscape and re-construction of old quarries.

It's important to keep open spaces.

Maintenance and improvement of all buildings bring civic pride and more visitors.

High Street/town centre to be maintained or improved.

Heath & Reach has a core of older buildings, including Grade II listed ones, that should be preserved to retain the villages character, and the gap between the village and town should be maintained.

Please protect the historic high street - less new builds.

Facilitate the green space/belt on N Linslade beside Linslade Woods and bypass.

The school children and young people of the town badly need a place where they can follow outdoor activities - natural history, camping, adventurous sports, etc. It needs to be in a part wooded/field area and preferably with access to water - stream, canal, river, lake.

The High Street is an area that needs conserving as there are far too many modern buildings.

No changes to historic buildings in town centre and immediate areas. Perhaps more preservation orders issued. Feel particularly strongly taxi rank should be removed from High Street to North Street/Lake Street or Church Square.

I would like to see the local farmland preserved so that the town does not get hemmed in by building.

Preservation of local farmland, all local open spaces that give access to nature and wildlife.

Why can't we have a museum please?

Flood plain land that could be utilised for light, non-invasive use.

Please provide dedicated walking and cycling routes to Rushmere Park (e.g. along Plantation Road area).

No specific area, but investment please into Tiddenfoot, Rushmere, Riverside Path, Clipstone Brook Path, etc.

Stockgrove Park. More preservation of natural space and manmade space.

Ensure Stockgrove and Rushmere are there for future generations.

A green buffer zone i.e. agricultural land between A5 - A505 and Leighton Road Hockliffe.

We need a museum in Leighton Buzzard for the World War II work at RAF Stanbridge and other places that linked with communications at Bletchley Park.

Tiddenfoot Waterside Park: Toilets, access to Grove pub, canoe club.

Tiddenfoot Waterside Park should be protected.

Preserve the open land between Shenley Hill Road and Eastern Way.

Open spaces, including natural and man-made, help create a community in a town. Although we are well provided for, H&S facilities must be better maintained.

Would like the current open spaces and views preserved - Linslade Woods, views from Derwent Road, possibly an open space/Marina along southern area of the bypass once aggregates have been extracted.

The bandstand in Parsons Close Rec is great but needs renovating (+ it's a magnet for litter and could do with cleaning through the year).

Protection of the Green Belt from encroachment by MK and Dunstable.

I love places like Rushmere and it is so easy to get out to enjoy it from town. Great to get the kids into nature.

A heritage route map of the history of Leighton Buzzard.

How can anyone choose between these two?

Valley Farm should become a nature reserve.

Kingswood is the most important wildlife site locally.

Protection of existing parkland and better heritage of L Buzzard.

This area could be upgraded considerably for the local community.

More country walks.

Designated natural open space/nature reserve - distinct from development in Leighton Buzzard

A coffee shop at Astral Park.

No specific location, but with inevitable housing development, green belt must be protected and open spaces preserved for recreation, e.g. canal and Rushmere. Would like to see the narrow gauge railway extended.

It is important to have open landscape and not be surrounded by urban sprawl. We need to retain the beauty of Bedfordshire and its variety of landscapes. But historic parks, protected landscapes and old buildings need to be protected.

Open space is very important. We have a lot of quality woodland and parks that must be protected.

Very important to maintain local paths and bridleways.

Existing parks and intra-housing open spaces and parks, e.g. Rings side, Parsons Close Recreation Ground, Pages Park, Adams Bottom, Stockgrove to be actively protected from development.

Preserve all present woodland and manage it.

Rushmere/Tiddenfoot and Stockgrove need protecting using the Greensand Group.

Retain current parks, including Rushmere. Canal side walks around Leighton Buzzard/Linslade River walk.

More protection and keeping its character as it is. House building should not be at the expense of our environment and should not be in our few remaining green spaces.

Local Character continued

Keep our historical town centre a town centre with shops and facilities to suit all needs - don't allow out of town retail opportunities.

The town character needs to be maintained and any new additions to complement townscape.

The parks should be child-focussed - too many dog owners (and I am one) are irresponsible and with dog fouling make the parks unhealthy for children.

Castle Mound ancient monument near Hockliffe Church - signposting and information boards and maybe seating.

Views from Church End over the Ouzel Valley to preserve while sensitively allowing required development. Make more of ancient buildings (church) and Castle Mound.

No housing developments.

Any open countryside is very important to support survival of wildlife. Once lost it cannot be recovered. This is important also for our quality of life. I'm thinking east of LB on Hockliffe Road, farming land but still rich in wildlife.

With all the masses of development we need to protect any green spaces. We should not be building on any green or farmland.

We need to maintain and expand our areas.

All Saints Church area. Parking for churchgoers on a Sunday especially.

Open spaces for families and play areas for children are very important especially in new housing estates.

Open space needs to be linked with community though a 'green wheel' network of paths, cycleways, etc.

Tea shop, visitor centre for the local canal.

No incursion into green belt.

Keep green belt.

This conservation area should be protected at all costs.

Riverside access where there is currently unsightly ad-hoc 'temporary' development of static homes.

Would like to see this open countryside remaining with no development.

A place for families to relax and exercise. Also to provide sports facilities with an all weather, multisport area.

Rushmere Woods is a great place for the family - somewhere to protect.

We need access to All Saints Meadows now, not in 20 years time on the back of a development deal. Please secure access rights.

Improved links between canal and other side of river.

Continued protection of heritage buildings in the town centre.

Development of local and independent retail. Preserve market town identity.

I think the built heritage needs preserving most as that is distinctive of the traditions of Leighton Buzzard/Linslade history.

The area around Astral Park is a great area for wildlife and rough areas. The orchard and field beyond are special. However, the mown areas to the SE are too extensive. Water meadows are special to LB.

Astral Park area - other parks preserve allotments. Rushmere/Stockgrove water meadows, Tiddenfoot Lake.

The river and canal provide a great connection between the urban and rural. It would be ideal to strengthen these linkages and maintain that biophillic connection.

While appreciating the need for housing, we must make sure that our green spaces don't get totally swallowed up and separate villages become towns.

Maximise use of canal and river.

I think town is important. It needs to be a meeting place for all people of all ages. It needs to provide attractions for visitors and a place to provide people stay rather than just visit. Don't let our heritage buildings fall apart.

I would like to see the Market Square reinstated with focus on making the town centre an attractive destination by using its unique history.

Help encourage more biodiversity. More sustainable countryside.

Increased biodiversity for a more sustainable countryside to adapt to climate change.

Important to have more naturally wild areas, to increase biodiversity and provide a good home for wildlife (especially bees).

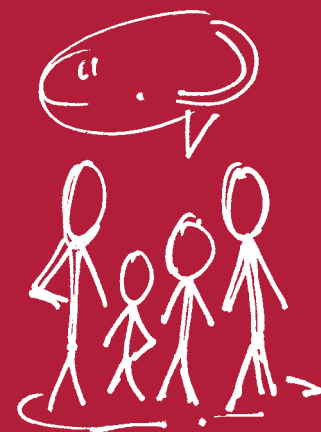
Increase biodiversity. We need to take measures to prevent/slow global warming.

Gravel extraction lakes - due to be returned to public access soon? Potential for wildlife reserve and/or leisure activities, e.g. sailing.

Brought back to a "natural" lake.

Sandhouse Lane Nature Reserve continue to preserve as a nature reserve and manage for biodiversity esp dragonflies and damselflies.

The water meadows, especially those to the south of the town, are an important area.



However, unacceptable use of language has been omitted.

Transport

Question: With your chosen type of Transport, please pin-point **one** specific place on the map table using your **pink** sticker where you think there is an opportunity. Please expand below on what you would like to see at this location:

Buses to run on Sundays and bank holidays. The present routes to run in evenings, after 6 p.m., so one can visit library, theatre, restaurants, etc. in town. Public transport needs improvement nationwide, nothing marries up, trains, buses, etc.

Bring back traffic lights instead of all the roundabouts. Lights allow spacing rather than solid streams through the town. Add a bridge between Mentmore Road and Grovebury Road to ease congestion on Wing Road/Leighton Road! Remove mini roundabouts.

With rapidly increasing levels of commuters as the housing developments grow, the car parks are now full by 10 a.m. each day, especially in the winter months. More facilities are needed, or a more enhanced bus service for all parts of LB/Linslade is required.

More regular service to estates which are 15 mins approx. walking distance from the town centre.

Congestion between LB and Linslade.

There is great congestion between Linslade and through Leighton Buzzard. This needs improvement to traffic flow. NB: The E Relief Road will be exactly the opposite UNLESS flow to the bypass and A5 is ensured. Both Heath Road and Strawbridge Road are already congested.

No cycling paths in the town centre.

We desperately need another route into town other than the Canal Bridge.

I would like to see the high street opened up to traffic again.

Once again all should be improved.

Progress the "Green Hub" cycle network.

Better cycle paths on main roads. Too many cycles on pathways in town centre area.

Cycleways are inadequate and pedestrians are at risk, especially on the canal towpath and Leighton Road.

We need to follow the model at Dash Direct (the partnership approach) for Eastern LB to the town.

Buses to get people into the town for the shops and food and drink especially from the villages.

In and around Leighton Buzzard - Heath & Reach.

Co-ordinated bus and train services will benefit us all as could help remove some cars from our very congested roads. Perhaps more little buses? Perhaps bus service to Rushmere?

Need to be able to cycle safely to open spaces both natural and manmade.

Shorter official access from Canal Towpath to town centre NOT via bin enclosure at rear of Leighton Road in Linslade.

Maintaining the rural bus services.

Direct buses to all locations in Bedfordshire would be useful as I don't drive and to get to other villages and towns in the area is very difficult. To get to Houghton Regis on a Saturday for work was impossible.

We need a bus service as part of the new development.

Eggington - We have no buses in the afternoon also none at weekend.

If we have to choose just one of these, supporting buses would benefit most of the people who have no alternatives - not everyone can walk or cycle, or has a car. Keeping people mobile helps with health, mental health, community, etc.

A transport infrastructure must cover all of Leighton Buzzard and surroundings. The targets are to reduce car journeys, improve access for those without own transport, manage parking needs.

Traffic management plan to minimise bottlenecks.

Plan town expansion to avoid traffic bottlenecks taking account of future vehicle technology. Avoid vehicles operating in "canyon" streets with limited ventilation.

Better coverage for outlying areas where improvement to frequency as well as range is badly required - particularly to M Keynes.

A new river/canal crossing to reduce through traffic in Leighton Buzzard.

If with vehicular we mean roads and cars, LB needs another access road. To me the most important is another road across river and canal. This will be very expensive, but if no action I see this lovely town become just another suburb.

Half hourly service on 150 route between MK and LB.

Half hourly bus service 150 Aylesbury to MK via Heath & Reach, coinciding with A5 services N - S along the A5. Access to LB station is very restricted. Either clearance or a new location is needed.

The local bus company linking LB centre with Aylesbury and Milton Keynes/Luton does not permit its drivers to stop on open road in countryside where there's no bus stop. Some relaxation of that rule should be sought for the benefit of people living on the fringes of LB.

Implement the exemplar plan for Billington Road asap. Introduce 20mph limit as Council proposes, with speed reduction items, since Sandhills Estate built, a lot travel at 40mph in 30mph - needs policing with traffic calming measures. Unblock all of the drains on Billington Road between The Maltings and Grovebury Road.

Joined up activity - a proper footpath link not like at least two left hanging - due to "lack of funding"!

Transport continued



Cheaper parking to encourage people to shop in the town centre and use eateries, cafes, etc. without being rushed (I can park for 50p per hour in MK, whereas £1 is cheapest town centre car park per hour). Better parking (and cheaper) would encourage me to shop for more goods locally and visit town centre more frequently.

Sustainable and affordable transport for everyone will reduce air pollution and increase prosperity - more solutions needed for cycles, buses, trains, trams and walking. No more roads or traffic.

Selfishly I would like to keep our local bus services which at the moment I find satisfactory and very useful (having no car) for shopping and hospital visits.

There is a need for safe cycle lanes (separate from cars) throughout the town of Leighton Buzzard.

A second bridge put in across river/canal to improve access to and around the town centre.

Keep F70 bus to MK via Soulbury Road.

New footbridge between Aldi store and other side of River Ozel.

Buses not cut in Linslade. Cycles.

Pedestrianisation of Hockliffe Street from Old Fire Station to library access road. The town functioned well when this was closed recently for several weeks and conflict with pedestrians was removed.

Make better use of the Narrow Gauge Railway.

Safe route from Leighton Buzzard to Stanbridge. Bike and on foot.

Not everyone can afford cars or travel significant distances on foot/bicycle - we have an ageing population and climate change - we need more buses.

Whole bus service provision needs upgrading. The use of cars will continue to increase, and will lead to gridlock as population increases. Council must invest/subsidise on a very much greater scale. A bold/brave strategy is needed throughout Leighton/Linslade.

Regular bus service to Leighton Buzzard.

Frequent bus service to Leighton Buzzard from Eggington at least.

Old road and Soulbury Road need facilities for cycling in Linslade and Leighton Buzzard.

Better free flowing traffic especially when the A5/M1 link puts more traffic on the LB bypass.

Better links to and from the station and running until later in the evenings.

I am a regular bus user and have heard that the bus routes are to change drastically in the near future. A regular bus service to the town and railway station is essential for an ageing population who don't drive and it would encourage people who do to leave their cars at home as parking is an issue in town and at the station.

Hockliffe Street (library) car park multi-level extension (similar to railway) increases visitors who can stay and footfall and economy.

Improve (widen) Eastern Way from Heath & Reach to A5.

Hybrid powered or electric public bus transport with affordable fares which will reduce car pollution and enable more people to confidently use bus services. No cuts in bus services will reduce isolation of non-car drivers.

More footpath links to the A5 from Heath & Reach.

To improve pavements to make walking safe for elderly people.

Pedestrian crossing around the town centre are too close to junctions.

Congestion around town. Pedestrian crossings too close to roundabouts.

Can't recall where exactly I put the sticker, but as a cyclist I do think more provision should be made. Try riding on the main roads, particularly those carrying HGVs, and you'll find it frightening!

More car parking at station, longer carriages, later trains.

More buses serving Linslade/Bideford Green/with railway station and reduce parking needs for commuters.

My house is several hundred yards from a bus route - not OK when one is very elderly and/or with limited mobility. The "buzzer" does not cover need. There is a serious problem for elderly/vulnerable people needing to attend the many hospitals where clinics are held as the ambulance/vol car service has been reduced. [Traffic congestion is a great problem in town centre - need another bridge.]

Sandhills estate - at present the bus stops early evening and doesn't run on Sundays or Bank Holidays. This needs to run longer hours.

More buses at weekends.

West Street. Possibly only answer would be a one way system but cannot visualise how this can be enforced.

This would mean the extension of parking if the town centre is to be improved. Shops will not survive if parking is not expanded. Limit taxis parking in ordinary spaces.

People need to feel safe when walking in their local area - proper police patrols.

Safer pavements please.

Make zebra crossing into pelican (light controlled) crossing, so giving clear message of priorities to both drivers and pedestrians.

Shared use path on Grovebury Road (north side) (between Parsons Close alley and the "old railway" to Mentmore Close).

Cycle path along Grovebury Road (between Parsons Close path and old railway line) - heavily used by school children :o)

More cycle paths, to keep cyclists off the pavements which is very dangerous to pedestrians.

Grovebury Road, Parsons Close to Blackbridge Path a cycle path would join two existing paths and link Cedars School and Vandyke School by cycle paths.

Regular buses for Billington.

Maintain footpaths. Ensure walkers priority along canals and river paths. Encourage walking as well as cycling.

However, unacceptable use of language has been omitted.



Keep cyclists off footpaths - it's dangerous especially when cycles are painted on the footpath, it makes cyclists think they have right of way and can go at whatever speed they like (generally throughout area, no sticker on map).

Transport - a combined approach required. Main issue TRAFFIC CONGESTION.

The traffic build-up, morning and evening, and every weekend is appalling. It has to be addressed by accepting the existence of the car, NOT trying to hope that it will go away. Analysis (DATA) of the problem then organisation to resolve.

More parking.

More frequent buses, including to Aylesbury, MK and Luton and between Sandhills and the railway station, with earlier and later running.

Town is approaching gridlock most of the day. Better vehicle flow is needed, particularly with the expected growth in housing.

Traffic flow across town essential. To ease current gridlock a suggestion could be to have traffic lights to control the pedestrian crossing at West Street/ Lake Street junction.

There's quite a lot of parking across the pavement in Grove Road. I use a wheelchair and can't get by/up and down ramps to pavement.

More buses on weekend.

I am in favour of all public transport improvements. Especially bus links into the town centre to support workers and jobs there.

Many areas are gridlocked and all the above are important. But without vehicular transport being adequate, people will move to other areas.

Improved flow of traffic - Stoke Road junction, Wind Road junction, Soulbury Road junction, Canal Bridge.

We need better bus links especially on Vandyke and Hockliffe Roads.

Serious improvement of traffic humps (they are all different). Speed and parking restrictions on Vandyke Road, plus 20 m/h limit and maybe a one way system to improve traffic flow.

Through route with considerable parking, often on both sides of the road. Frequent minor accidents.

Buses travelling to more locations.

Buses available to enable travel to work by public transport. Not everyone can afford to shop all day without income.

Connections from villages to Leighton Buzzard in particularly the train station and town centre.

Are there any opportunities to build car parks on the outskirts/Grovebury Road so people can park and walk through Parsons Close to town to try and alleviate the traffic.

Town services in Leighton Linlade need to be protected and enhanced. Cuts should not be made especially the 36A/C Linlade. We need to build on the D1 type of development including newer vehicles.

A few years ago we lost the 09 bus. We do not have a bus to the station in Leighton Buzzard. But all modes of transport need to be improved. I disagree in choosing only one in this survey. I feel this is pure spin.

LB town centre.

Too much traffic in town. Encourage walking.

Enhance the walkways/footpaths that run alongside Clipstone Brook, particularly in Parsons Close to provide a continuous riverside walk linking the town's open spaces.

More cycle facilities at the station.

Desperate need for more car parking in the town and Leighton Buzzard.

Including keeping the roads free from debris and potholes.

Buses from all areas into and out of the town centre will encourage town centre shopping and allow access to employers throughout the town.

Provide improved pedestrian/ cycle access from towpath to town centre/park.

Large vehicles should be made to use the bypass and not journey through the town.

Replace Hockliffe traffic lights with mini roundabout worked brilliantly when we had them temporarily.

Replace traffic lights with roundabouts wherever possible.

The cycle ways need re-marking and if possible extending.

Dedicated cycle path between disused railway trackbed and footpath to Parsons Close. Also would like bridge across Wing Road where it crosses the bypass. Heavy traffic at end is huge hazard for cyclists and pedestrians.

Cycling down Grovebury Road is terrible. The road is really badly tarmacked and lorries and traffic make it feel very unsafe.

Roads in and out of town need to be improved. The traffic is awful at certain days/times.

More bus services so less need to rely on car.

Improved access to station for drop off/pick up.

Better kept roads and pathways for elderly to walk to town safely.

Improved and cheaper parking especially off-peak times.

More buses through Eggington.

More frequent bus service so that people can move around the area and into not only the town centre but the villages.

Billington Road/Grovebury Road junction traffic lights in Soulbury/ Wing/Stoke Roads to be phased better.

I would like to see existing road better maintained, i.e. white lining repainted.

Introduction of new bus routes on new developments must be in place BEFORE residents move in to ensure 'good habits' are developed. While the D1 bus was good at achieving nodal shift it started far too late in the life of the scheme.

Direct route to Luton Airport as it was in the past.

A bus service from Cranfield to Woburn Sands, Woburn and then be able to continue to Leighton Buzzard.

Parking should be pay on exit with more free parking.

Transport continued



There are currently 50,000 residents, including commuters, that is 5000-7000 vehicles going over the single bridge in the town. Bypass is a bypass, not a town road. Don't become a Luton (only 3 bridges crossing the M1). Infrastructure before development. Need road connecting East to North Road.

Later running buses = 150 & 70.

Improved links to railway station to reduce peak time congestion.

Cycle path to Leighton Buzzard and Woburn? Even MK?

The only east-west route through the town is inadequate for present traffic levels and will only get worse as the town continues to expand. Pinch points are North Street roundabout and Wing Road/Stoke Road roundabout.

Improved traffic flow from Stoke Road into town centre. Priority from the right at two junctions within 50 yards creates long delays.

Replace/remove the zebra crossing on Leighton Road at the bottom of Bridge Street to improve traffic flow for vehicles and pedestrians. All the hold ups coming in from Linslade are caused by this crossing.

Remove/replace zebra crossing on Leighton Road (near Bridge Street) to improve traffic movement in that area. It causes so much delay to traffic in both directions.

1. On the Sandhills estate there are certain areas that have verges instead of pavements. This is a very family oriented estate and the lack of pavements is extremely dangerous for children. Can verges please be replaced by pavements? Having spoken to some of my neighbours this is a common feeling. 2. Quality of pavements on Billington Road between Johnson Drive and Kestrel Way is very poor and needs improvement.

We need a commitment to complete the Leighton - Linslade Green Wheel, especially safeguarding corridors to the west, south and east.

Something to help ease the flow of traffic in the town.

Cycle lanes are too narrow and then end half way along the road!

Improve the bypass to reduce traffic queues in rush hour. Improve cycle town signs to include walking times not just cycling times and add distances.

More bus services needed - make it more viable than having to use a car - particularly to get to key locations (town centre, stations, GP surgeries).

A number of existing cycleways are simply unsafe to use. Traffic makes no allowance for bikes.

Southern access to town is in dire need of improvement. All routes leading to chain bridge are overloaded now.

Linear linking of footways closed by development away from roads.

Regular and fast buses connecting the outer estates with the centre invigorate the centre - apps giving accurate bus locations will minimise waiting - perhaps giving an opportunity to reserve a space!

Improved bus services to outlying areas to reduce transport/cars in town centre roads. Improved bus services to new estates.

The traffic build-up, morning and evening, and every weekend is appalling. It has to be addressed by accepting the existence of the car, NOT trying to hope that it will go away. Analysis (DATA) of the problem then organisation to resolve.

Canal bridge has cycle lane signs that are nearly invisible because of cars driving over it. Had accident there last week. Please force more cars to use the bypass rather than crowd over the bridge.

To ease traffic congestion round LB more traffic lights replacing current roundabouts.

Improve footpaths/alleys within town centre.

Buses should run around the town, but stopping at the bottom of town to drop people off.

I would like to see houses redirected away from the high street. There are no bus stops in the high street, they are at the top and bottom of the high street. This would help noise, traffic and create a more harmonious high street and Market Square.

Provide more safe cycling routes into town making it more cycle friendly and encourage younger people.

More bus services to town centre especially from new housing developments.

The town is expanding rapidly yet is not equipped to handle more cars, which are also detrimental to the environment. Investment in bus network will help alleviate congestion and pollution plus enable travel for those who don't drive/are on low incomes.

With the town expanding rapidly we need to make sure that people can reach the town centre without having to use their cars. We also have many people who don't have cars.

Mini roundabouts on A505 at "Browns" and "Ledburn Road" are totally inadequate for rush hour traffic along the southern bypass.

Main road from the south into Leighton Buzzard needs to get its priority back!

Cycle links from the South Leighton developments to Tiddenfoot and the railway station.

However, unacceptable use of language has been omitted.

Jobs & Businesses

Question: With your chosen type of Business, please pin-point **one** specific place on the map table using your **lime sticker** where you think there is an opportunity. Please expand below on what you would like to see at this location:



The shops in town which we were told were to be on the south side is what we want, not offices and hotels. We do not need a retail park out of town.

Get the south side of the High Street sorted as we were promised years ago. How about a bowling alley?

Expansion of town centre.

Leighton Buzzard/Linslade are market towns especially LB and if it fails to improve the market/town centre it will lose its identity.

The South Side development has stalled for too long and there is a perception it is being promoted very largely without the detailed knowledge and experience of Leighton Buzzard. There is an urgent need for added vibrancy to the town centre which could come from a suitable mixed dvpt including leisure and appropriate retail uses.

Make the town centre shopping better. Towns with attractive town centres attract more shoppers and people to move to the town.

No retail units. Only the high street for shopping.

High Street development means shops, cinema, etc. not offices and flats.

Small start ups are growing and we should accommodate them.

Centre of town ok and traffic already in red zone! I think small start-up office centres an excellent idea if outer town area.

Start up facilities should be provided in any new High Street developments. Our High Street has always moved with times - let that continue?

We need clothes shops in the town centre. Hawkstone Properties are very interested in developing the South Side of the High Street.

The South Side is the place to put retail - it will create hundreds of jobs, improve the day and night economy.

A Marks & Spencer or similar shop would be great selling good quality sensibly priced clothes instead of all the 'cheap' shops we have.

Potential for start up areas in Leighton Buzzard area.

Looking to the future, start up office centres could be space used by home workers with children/shift working partners and provide good facilities for working.

Industrial parks offer employment to local people who cannot afford to travel to London to work.

Old Cattle Market MUST be developed with one or two prime stores, e.g. M&S plus leisure facilities multiplex/theatre/sports complex plus small residential and food shops.

Ensuring shops are not left empty. Developing the south side of the high street.

We have sufficient industrial areas. There is a need for small scale start-up facilities not just for offices, but for small innovative industries.

Retail units to the South Side of Leighton Buzzard High Street is very desirable. At the moment residents have to leave the town to get clothes, books, homewares, etc. and this is very inconvenient. I run a tiny business and small start up offices and artists studios would also be desirable.

A good variety of shops other than supermarkets; especially quality clothing (all ages), bookshop(s), butchers, good restaurants (not more coffee shops).

In the newer employment areas for Clipstone Park.

LB - Keep the High Street.

We are so lucky to have a vibrant High Street - please don't wreck that by putting chain coffee bars, corporate 'experience' outlets - they exclude so many people from their local shopping centre and put local businesses out of work (replacing proper jobs with zero hours contracts).

High Street retail: increase local footfall; reduce traffic; provide inclusive infrastructure. Out of town retail works actively against this and will damage the town.

Clothing shops for men and women to reduce need for out of town shopping.

Construct retail/office units to encourage commercial evolution.

Action taken to ensure a better mix of retailers - rents, rates, parking to promote a vibrant town centre.

More pedestrianisation in Leighton Buzzard (e.g. from Hockliffe Street car park entrance to the Roebuck p house).

My thinking is that we should develop this town with people in mind (i.e. visitors) to an unspoiled town, lots of little shops, cafes, restaurants (special attention to "Eleanor's Cross") relaxation, children's amenities like splash & play - a place to enjoy. Many of those amenities are already in place, just have to be put more in focus.

More retail shops for Heath & Reach, every space is being filled with houses without local facilities.

Good place with plentiful water supply. Develop south side of High Street - not Grovebury Road outlets. High Street is the heart of the town - not an out of town place.

Where manufacturing and/or service industries can flourish without being a long journey away from homes of employees.

Develop south side of High Street - not Grovebury Road outlets. High Street is the heart of the town - not an out of town place.

Jobs & Businesses continued

More clothes shops are needed in the town centre to keep the centre alive. Retail parks should not be considered as they kill off town centres.

I would like to see shops both sides of the High Street thus allowing people without cars to shop locally, keeping jobs for people locally, and making an attractive town centre.

Retail should be encouraged in the High Street. Retail units on the edge of town are not a good idea. We should keep the High Street alive, people should be able to shop without having to use the car.

Need good mixed facility business parks to accommodate large/small businesses - keep people working locally so that reduce commuting, etc.

Another food retailer in the High Street, e.g. M&S Food.

Attract developers to the old Cattle Market site.

Off the High Street, south side. Clothes shops.

Town centre/station locations for room rental with shared facilities to offer professional services to start-ups such as receptionist/kitchen/internet.

Substantial new employment will be required to serve the substantial new housing which is clearly required.

Clothes shops to bring in the younger generation to the high street.

We need "small start up" and "growth business" centres covering all types of business.

Creative opportunities for small/local businesses - need to have real and longer term inducements, e.g. business rate relief. Also need better public transport to reduce reliance on cars in town centre.

Leighton Buzzard High Street should remain a shopping street and more business should be encouraged.

Businesses that employ local young people and develop their skills.

A town needs a focal point for the community - we have the market and many interesting shops, alleys and meeting places - otherwise community becomes secular and fragmented.

Develop small business park around Leighton Town FC ground or top end of Grovebury Road Estate.

In the centre of town - not business parks or retail parks out of town.

I need to be able to get to good shops easily and the high street for me is easy to get to.

Everything should be done to enhance and maintain a wide variety of small shops and businesses.

To relieve the gridlock in town, there should be a few more retail units out-of-town, for example to serve new developments east of Heath Road.

More independent retail and restaurants.

We need industrial and commercial property not retail parks or which there are many within a 10 mile radius.

Development of shopping and leisure facilities near the river/canal - an undeveloped asset.

Marks & Spencer - food outlet. Departmental store.

Grovebury Road.

If parking was improved it would allow people to access the town and give trade to local businesses. 2 days a week the local shops lose out to the market as they take up the parking.

Make rents favourable to encourage new business into town to encourage visitors into town and make parking available for them.

Shops and a couple of restaurants. Why can't we have more shops of clothing for older ladies? Where are the men's shops please?

Priority always given to High Street (and environs), not to "out of town retail parks"!

High Street development and improvement not "out of town" retail parks thank you.

Near town centre for start up business. Grovebury Road.

Decent clothing and shoe shop. No more cafes!

South side of High Street.

Area behind High Street - Old Cattle Market needs to be developed (Smith's Fairground depot too).

The high street MUST be managed as the focus, made more attractive to general shoppers, at the expense of retail parks, etc. To encourage retail parks will destroy high street footfall. Extending the area down to TESCOs could provide this.

Less charity shops, more small retail units.

More retail units opened in mews and pathways leading to some car parks, etc.

Small and medium-sized retail units on the South Side of the High Street.

SME's are the most quickly growing sector of job creation. More help is needed to encourage entrepreneurs to start businesses.

We have enough industrial parks in L Buzzard. Need more small start-up centres at a reasonable rate to encourage development of small businesses.

Could there be local legislation to prioritise local businesses over large chains? All high streets look the same! Art studio space, affordable, ex-industrial = fine.

Rentable art, craft or music space. Studio space that artists, musicians or craft workers can work - renting the space (affordable!).

I refer to the South side development to provide retail outlets for both men and women's clothes, shoes, etc.

Rather than betting and charity shops.

I love shopping on the high street. It is a real day out - especially on market day. Could we please have more clothing stores?

Modern shops in a historic environment.

High tech - innovation.

Need to make town centre more vibrant, small independent shops and not out of town.

Better quality of shops.

High Street development with individual shops offered rents which are affordable!

However, unacceptable use of language has been omitted.



More support for local business.	market should be pursued rather than the Grovebury Road plan.	Leighton Buzzard should retain its identity as a market town with a traditional high street. However, new developments which are already planned need areas for employment and retail. More than one type of business needs investing in.
Department store.	An improved village shop for Hockliffe and post office.	All this depends on which businesses can be brought into the town. The High Street retail needs to be maintained but there needs to be businesses outside the town centre as it would not be able to cope with all the traffic.
Mix of high-tech and professional companies providing highly skilled, highly remunerated jobs - much lacking in SW CBC.	Encourage sustainable local retail units in villages.	I love the town centre but feel it would benefit from some investment and modernisation.
Encouragement of High Street shops. Strongly disagree with large retail units outside the High Street that definitely takes business away from this area (just look at Dunstable!).	There are good commuter links to areas with jobs. LB should remain a commuter belt 'village' and let business parks be created elsewhere. Retain its green belt.	The A5-M1 link provides an excellent opportunity to develop a business park of Stanbridge Road. This should go beyond a logistics shed.
More clothes shops well known names, and beauty product shops such as L'Occitane, Lush or Body Shop on the old Cattle Market and Johnson Auction site.	No retail parks - we need to invest in our local town centre and High Street. Developing the high street will encourage people to shop and spend money locally without the need for a car.	Would be nice to see more independent restaurants.
It is important to keep a vibrant High Street and develop the land to the south with a mix of varied local shops, small enterprises and leisure provision.	South area of the High Street could be re-developed.	An enriched, healthy high street that includes a diverse mix of independent and chain shops, eateries, specialist shops.
Improvements in the High Street in Leighton Buzzard to cater for our increasing population. A better choice of shops.	Easy to read signage directing public to all businesses like some other towns.	I would like to see Hockliffe Street pedestrianised as there has been a huge problem with traffic, e.g. lorries, buses and car parking constantly on yellow lines.
Support for innovation.	Bigger stores so that people do not have to travel to shops such as M&S.	Need to preserve High Street and town centre.
IT centres encouraged to set up here by attraction of large retailers such as M&S.	South side of High Street development.	Greater opportunity for businesses (leisure, food, retail) to come into premises in the town centre.
Multi-office, multi-company start-up innovation centre with serviced office and central IT facilities in the same manner as that provided by Regus in Milton Keynes.	Need to attract more people to shop locally.	Would like to see an enterprise zone set up for high tech companies to encourage start-ups and accommodate growth.
Ensure the High Street remains vibrant with a range of shops. NO out of town retail parks.	Better access for scooter/wheelchairs.	Larger markets in London and MK.
Particularly the south side of the High Street in Leighton Buzzard.	High to be completely pedestrianised and areas to sit and enjoy cafes.	Regenerating the area between the rivers to encourage small business mixed with café culture and night life opportunities will help to link Leighton and Linslade - keep young people in town contributing to jobs and ambiance with the benefit of river and canal side spaces - could be lovely! Balanced by the Water meadows to the north.
Develop south of High Street, Leighton Buzzard. Increase car parking NOW - LB town centre. Forget retail parks on edge of town which would ruin town centre trade in Leighton Buzzard.	Pay on exit parking to retain people in town and provision for adequate community and social 'businesses'.	
No retail parks or out of town shopping - these will destroy the town centre.	Encourage High Street named retailers to the High Street. Low value retailers do not keep independent retailers.	
By developing the south side of the High Street and ensuring retail is at the forefront you will see an increase in jobs and opportunities. Larger employers should be accessible by local transport.	Get rid of Poundland and encourage decent High Street shops to raise the tone.	
The original plan for a car park and retail on the site of the old animal	Industries are vital, yet evolving. Transport links will not feed the towns wealth. Investors will invest in small start-ups - make LB a flagship = Beds a flagship. Small acorns become oaks.	
	Measures to encourage and support local business in Linslade around river and canal and in Bridge Street.	
	Greater selection of retail outlets including clothing.	
	A shop that offers fresh food?	
	Area to south of High Street needs retail development.	

Jobs & Businesses continued

Improve high street to encourage local shopping and stop movement to Milton Keynes centre. Encourage clothing, local shops.

The high street MUST be managed as the focus, made more attractive to general shoppers, at the expense of retail parks, etc. To encourage retail parks will destroy high street footfall. Extending the area down to TESCOs could provide this.

I moved to LB because of the vibrancy and community I saw on the High Street. Greater efforts to strengthen and diversify High Street. Clothing retailers seem an obvious expansion target.

Encourage people to use the High Street as edge of town retail parks can kill the identity of a town as the High Street area closes down.

Please develop High Street. If you want a cake to rise, you mix your ingredients in to the middle then it will rise. Keep focus on the town centre.

We have the benefit of independent businesses and this needs protecting/developing. I don't think we need more chains in the high street. Independents create more lifestyle expenditure and character again making the high street a destination.

Expand the retail in the town centre which will anchor footfall creating more jobs, more choice and sustain the independent businesses and market.

High Street - more retail shops (clothing) to encourage people to shop here and not go elsewhere.

We need a vibrant, lively town centre, which would have numerous shops (including more clothes shops) and cafes, pubs, restaurants, etc. This would alleviate traffic and losing of town's soul to 'out of town' retail.

It is essential that we have a vibrant town centre. The main reason I moved here was to be in a place where I could walk into town and get my shopping. Out of town retail is bad for the town and will turn us into Dunstable, which would be terrible.

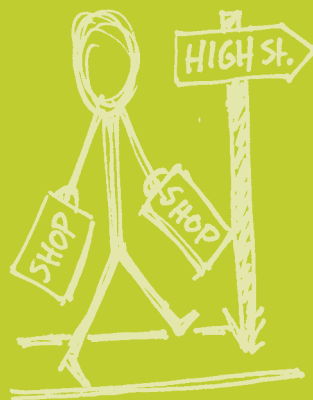
Current danger of losing the viability of the retailers on the High Street if more 'out of town' retail units are permitted.

Outskirts of LB where small businesses could set up.

South of High Street - especially clothes shops and more small independent shops.

The Big Plan for Leighton Buzzard had a lot of development envisaged close to the town centre. This is the right way forward.

For all the home based businesses and larger - the Ickwell/Northill area



Environment

Question: With your chosen type of environmental issue, please pin-point **one** specific place on the map table using your **green** sticker where you think there is an opportunity. Please expand below on what you would like to see at this location:

Do not build on all the green spaces.

Stop building on our open spaces - instead of retain parks on brown fill build residential.

Regular monitoring of pollution levels during the periods when children are walking to and from school. Linslade (Mentmore Road) is a specific area around the schools.

See Local Character.

Open spaces are so important for recreation, health and wildlife.

Linslade Wood and the surrounding open area needs to continue to be managed to the benefit of the wider community. It is, however, a wider spatial issue more generally around LB.

I am not aware of any renewable energy being created owned by the Council. Consider wind turbines and solar panels.

Increase the number of wind turbines in the area.

All need addressing!

Tiddenfoot Waterside Park. This is being cared for by volunteers (Friends of Tiddenfoot Waterside Park); the Greensand Trust and Central Beds Council. I would like: 1. A visitor centre, 2. Expansion into the Ouzel Valley Park, 3. Better signage to Tiddenfoot.

We need many more renewables in Leighton Linslade, both wind turbines and solar in order to meet government targets. The fifth carbon budget passed July 2016 which states: a big increase in onshore wind.

Wind turbine.

Continue to develop the wind turbine in USR.

I like wind farms and solar panels. Do we encourage all new homes to have in-built solar panels on roofs?

Open space can only be managed by local policies. Renewable/pollution are more national issues.

However, unacceptable use of language has been omitted.



Sand martin nesting should be encouraged at Tiddenfoot WP or reactivate Ledburn Pit with restricted access.

I support wind farms.

Too much open space has already been given over, or planned to be given, for development, e.g. Vandyke Road and Miletree Road. It is not an outstanding area of natural beauty but is pleasant open space that should be maintained.

I think this would be very desirable and might help with good air which would be also extremely desirable.

Keep open spaces where forest.

But impossible to choose, really. Sigh. Renewable energy must be the main driver - extended to cover insulation in new builds, solar on Council-owned properties, etc. Sometimes I feel CBC thinks the fuss over climate change will just go away on its own and we can all get on with things as they always were.

Renewable energy is one of a number of issues relating to global warming that local Councils can address. Councils should take every opportunity to encourage wind, solar, heat recovery and storage (batteries). Equally, a focus on energy efficiency in new build is essential and can make as much or more impact than other options.

Plan to control flash floods.

Consider water management plan to allow for variable global conditions with energy generation.

As little interference as possible, i.e. retain the status quo as far as the feel of the area is concerned.

Provide a new canal/river crossing to reduce through traffic in Leighton Buzzard.

With all the development taking place around LB "D" is very important with future generations in mind. Young minds need to have access to wildlife habitats to see first hand what is "Mother Nature". It is the young ones who will carry the banner.

I am totally against the second wind tower off the A5, the first one already affects signals for TB and electrical equipment.

Frequent flooding near Friends meeting house.

Protect places like Valley Farm where developers keep trying to get planning permission for houses, not even in Leighton - Linslade Council.

A well defined corridor along the route of the LBR up to Eastern Way that reflects either the farming or sand quarry history.

We need more support for wind and solar power schemes and for community energy projects - i.e. supplying direct to the community rather than the grid.

Less traffic in town centre which would not be a result of construction of retail park and alternative to Luton Airport overflights in future.

There should be an effort to reduce traffic through the centre.

Development of solar rather than wind - sustainable solutions on housing as well as dedicated farms. All new housing should have solar.

Wing Road area. Canal bridge.

Reduce traffic flows in Wing Road by opening up an exit route from Tiddenfoot area to the bypass.

Heath & Reach solar power. Clear energy.

More wardens (well maybe to have some would be a start) to stop vehicles parking anywhere they want with diesel engines running.

All new development, and it will be substantial, must be self-sufficient in energy needs. More wind turbines will be needed.

All of these attributes are equally important. The ____ will raise pollution levels and destroy wildlife habitat.

The designation of Hockliffe Road as a major trunk route for heavy vehicles is inappropriate. It is a residential street with on-street parking and no speed restrictions. There is huge pollution air and noise) for residents and pedestrians.

More opportunities for renewables and education about.

Do not build on green belt and flood plain.

Habitat to encourage wildlife for the enjoyment of a growing local population.

Alongside the canal and river Ousel - trees are being cleared and hedgerows removed. Keep these to and wildlife and for binding soil.

Develop lakes north of Eastern Way for wildlife reserve and nature walks and place for wind turbine.

CBC ranked 56th of all Councils in generating renewable energy! More wind turbines needed in all appropriate places to generate energy. Please learn from good green practice of other Councils.

Better traffic flow will help maintain the country town feel of LB.

Green belt' /footpaths be maintained and promoted for all to use.

The Green Belt east of LB has already been heavily eroded and CBC should resist further applications to build in it. The gap between LB and surrounding villages and hamlets should be preserved.

More air turbines.

Renewable energy work also to remove air pollution so help to resolve two issues.

At many public buildings and on houses with the owners agreement.

Air pollution is now a national issue. I would advocate banning all diesel vehicles from Leighton Buzzard to prolong life expectancy.

Environment continued



Stoke Road.

With development open spaces are restricted and existing ones become crowded and not a pleasure to visit. No more caravan parks and the unsocial behaviour they bring to the town.

The increasing number of families/people moving into the area - they need open spaces for leisure and education. Further development restricts this.

With development planned between Vandyke and Clipstone the run-off risk to Clipstone Brook is severe.

MORE PLEASE! Look forwards not backwards. Another wind turbine at Heath & Reach please - and anywhere else.

Heavy investment in local renewable energy installations - wind turbines, battery storage, etc.

Necessary for life, human and animal, wildlife habitats.

Ensure Stockgrove and Rushmere are there for future generations and a cycle path along Plantation Road to the parks.

General - no sticker.

A few years ago, there was extensive flooding near Cedars School. We may be only a blocked storm drain away from disaster.

We need to safeguard the areas of open space we now enjoy.

All green areas currently around the town. It was planned to have a green corridor from Browns Agricultural round to Stockgrove (Rushmere).

Near canal areas.

Access for walking around the lake that is near Tiddenfoot.

While air pollution can be bad with stationary traffic in many town roads, this can be eased. But we have the opportunity to create energy sources on land around LB.

Constant traffic gridlock along West Street with high level of pedestrian use, air pollution an issue here.

I support the wind turbine at Heath & Reach.

Solar panels on flat roofs on trading estate. Wind turbines where further away from practicable homes and offices.

I support renewables like the Heath & Reach wind farm. Could the town produce all its own energy in the near future? Would love to see that!

Wind turbines and solar panels - I need two stickers for this.

Heavy traffic from local quarries, particulates in the air from such places cause added pollution.

Heavy traffic fumes allied to particulate matter from surrounding quarries. What effective monitoring is in place?

Development of a wetland habitat within the Ouzel floodplain.

Wildlife park/wetlands.

With the number of houses proposed at this site I would like to see some development of open space/wildlife habitats.

No particular location chosen but place it where needed. I like turbines, perhaps being built where new estates are.

Traffic is a major problem, e.g. where Stoke Road/Soulbury Road/Wing Road all meet. Air quality is poor. Basically too much traffic, lack of alternatives. We cannot build our way out of it with more roads.

I cannot fill any box in because they are equally important for our quality of life.

As per question 1.

Green spaces absolutely vital. Disappointing that footpaths and bridleways are not mentioned in this questionnaire.

Actively protected open, natural spaces and parks to be provided where high density housing developments have been planned (e.g. north-eastern LB) to prevent urban sprawl and environmental degeneration.

More wind turbines to the north of LB would significantly contribute to renewable energy.

A weir on the River Ouzel could generate electricity for local use.

We need more renewable energy - so LB should play its part and approve new wind turbines and then look for other ways renewables could be produced in the area. Should be more support for community energy.

Air traffic from Luton is ever increasing noise pollution and my understanding is they should only use space over our town centre in "exceptional circumstances".

Open and expand new lakeside as Tiddenfoot.

Some of the houses built on floodplains need their flood risk reduced.

Pollution from the A5 through Hockliffe is very much in need of attention.

Major road junction in the dip allows air pollution.

We are surrounded by green belt that could be assessed for renewable wind and water energy.

See also Local Character. Think very carefully before new build in green belt around LB. Green belt, already constantly shrinking, is important for wildlife, and in turn our quality of life. Prefer infill sites, as another location which may be more suitable.

We need to invest in renewable energy. Leighton Buzzard could become a beacon of green energy. We need to support the wind farms that have been proposed and Council buildings should have solar panels added. Support community energy projects.

In general - more solar and wind energy.

More renewable energies.

More wind farms. Solar power units.

Need to be incorporated in any development.

Maintain and create more open spaces.

Work done on floodplain between All Saints and Old Railway Track to encourage more varied wildlife.

Link open spaces with communities and ensure they are properly built/developed and opened for public use; unlike fiasco of the lake at Sandhills which is still not open for public use.

However, unacceptable use of language has been omitted.

Supporting work done since 2000 at Linslade Woods into the future.

Linslade Wood.

Clipstone Brook and tributaries pose a flood risk, which may be worsened by planned development.

Continue access and maintenance of Linslade/Bluebell Woods and expand further north along Stoke Road.

As more of this area is being developed so the risk of flood increases.

Again the importance of Rushmere Woods to the community.

Why do we not have any NO2 monitors on the inner ring road? How do we know what the air quality is like if we are not even measuring it?

Open space and wildlife needs to ...

Protection of green spaces and surrounding Green Belt land (which is already being eroded by housing growth).

Everywhere needs to expand on renewable energy. We are way behind other countries.

Land between Grovebuty Road and canal should be developed into a managed wildlife habitat.

I think there are opportunities to expand energy production but also worry about the pollution at transport hubs. But I think in short term the green space around new housing is key.

We need to encourage reduced energy use and this is achieved by exposure to what it takes to generate energy. A solar sufficient town with distributed storage and generation is key. Use all available spare space and roofs to generate solar power.

Improve water meadows for wildlife and leisure. Encourage habitats for wildlife. Also need renewable energy to reduce pollution and provide energy for future.

All green areas currently around the town. It was planned to have a green corridor from Browns Agricultural round to Stockgrove (Rushmere).

Renewable energy is vital for us to fulfil our legal carbon reduction requirements. LB is doing ok, but could clearly support greater wind power production. Sites like disused pits would be ideal.

Wind turbines within the Marston Vale - Old Brogborough landfill a good site although the scheme turned down.

Rushmere Country Park - more investment.

Open wildlife around towns is important for families and for air and noise pollution.

In outlying areas we have lots of green space providing habitat for birds of prey etc. This strikes me as I am not used to seeing wildlife like this from W London where I grew up.

Become a more sustainable town in terms of energy production and cut CO2.

Wind turbine at Heath & Reach.

Expand on the use of natural energy (particularly wind) to power local homes and businesses. This is vital as 'old' energy is polluting and will decline as natural resources reduce.

We need to be self sufficient for energy. We have a supply problem and must be able to provide our own energy. I want wind farms and solar energy locally.

Preservation of part of the lake area for wildlife only.

Solar farm.

Solar panels and energy saving measures on industrial buildings. Also wind turbines are good anywhere they will work.

The Checkley Wood wind turbine should happen.

Homes

Question: With your chosen type of Home, please pin-point **one** specific place on the map table using your **purple sticker** where you think there is an opportunity. Please expand below on what you would like to see at this location:

Affordable homes for all generations are needed but not on the green belt.

On brown fill sites or around current new areas Billington Park/Sandhills but not on open countryside.

No particular area but in my case I live in a 4 bedroom house. Would like to downsize within 15 mins walk from town centre but no smaller houses available at cost effective prices.

The area has become very expensive compared to previous years and there are less homes for people on a low income.

Presumably he proposed E of LB developments would be the most sensible here.

NO MORE HOMES PLEASE!

Increasing numbers of old people who would like to downsize.

Many young couples are moving into LB and L from London thus creating a "younger" town. All new development should allow for this.

Affordable homes especially social rented are very needed for young people, especially as affordable housing has dropped from 30% to 10% of a development.

Young families need good homes and it is hard for them to get on the housing ladder.

There are a number of empty derelict houses in and around the town. Why don't we renovate them instead of continually building new?

And low energy homes.

Why not be a town which leads the way with more affordable rented property so the younger generation can stay and be independent.

There is a greater need for affordable housing for people already in LB area.

Council have ownership for any/all with warden operated security in order to vacate Black House "Hotel" for museum project.

Homes continued

I am very concerned about the numbers of homeless people, so I would support initiatives to support people in rented housing, emergency housing. Also social housing, shared purchase initiatives. The Council also needs to meet the legal requirement to have sites for travellers.

Living over shops in High Street for younger folk.

All these types of home are important and are needed. There should be a range of mixed development of a sensitive nature. No little boxes just the same.

Have these in nice parts of Linslade and Leighton Buzzard and that have access to the town, etc.

Especially on the Linslade side where people can walk to the station or to local schools; this would keep traffic off the roads.

We need some 'downsizable' homes within the village.

Our children have left village. Cannot afford houses.

If the hotel and cinema complex goes ahead - include flats for bringing people into the centre and the town (like at Bury St Edmunds) to increase your local tax income to keep services going.

Over the time frame of the plan we assume the demographic will move to families. If families are to be encouraged they will also need schools and retail.

Consider a plan showing population growth and future demand for homes.

Prepare a forecast plan showing population type and percent growth so the housing can be planned logically. Steer building applications.

With a scheme whereby first time buyers can buy cheaper but on condition also sell at below the market rate to a formula that is fair but does not see extortionate profit. This condition to remain for future purchasers.

There is a huge shortage of suitable older generation development, i.e. little choice other than McCarthy & Stone which disables one from downsizing to a housing development.

Provide or permit more development for older people in sheltered and other types of accommodation of the McCarthy & Stone type new to the centre of Leighton Buzzard.

Being one of "A" downsizing to a smaller home will apply to both A & D = family homes are important. Choosing "A" will also have an impact on "B" with freeing up living space.

On site of old sewage works on the edge of the golf course.

Bungalows needed for elderly people.

Low rise flat blocks for young(er) people near to town centre and railway station.

East side of Leighton has thousands of houses proposed, these are enough for the town providing all infrastructure is agreed prior to build, e.g. schools, doctors, shops, roads.

A resonance that doesn't destroy the Green Belt and where construction of infrastructure and mains services happens before house construction.

More affordable homes, i.e. social housing, housing association, rented or shared ownership.

Family but affordable homes on outskirts of Leighton Buzzard without destroying green belts.

A good mix of truly affordable housing to enable more home ownership - more settled communities - buy to let.

? off Cotefield Drive.

Develop more land off Cotefield Drive with new road links eastwards.

Shared ownership.

Council housing, in short terraces. Long term tenancies. Build to rent with investment by insurance companies interested in long term return on investment.

Actually, all of the above home types are required in CBC - and to serve Luton's unmet needs. Many thousands of new homes are required (as already identified) and a new 'garden village' north of Leighton Linslade will meet many needs.

All of these are planned for and/or being built. What about homes for SOCIAL RENT?

Opportunities throughout the area, in particular on new developments on east LBZ.

More houses for the older generation as the population is getting older.

We have enough development in LB.

This will free up larger properties for families without the need for the older generation to move into Leighton.

I'm not really sure - I think there have been a lot built and integrated - starter homes need to be for what they say they are - all new buildings need proper/adequate road access and parking.

Area opposite LB garden centre suitable for housing development.

In all available locations build Housing Association/Council housing/shared ownership and rental housing/homes.

Freeing larger homes will make space for families and stop the need for starter "shoeboxes", enhancing the town for all who live here.

But need infrastructure, etc. to support people.

I have lived in this area for 47 years and far too few affordable homes have been built in that period. No wonder people are going into poverty because they can't afford the rents!

House prices are rising disproportionately to local salaries.

Affordable homes is a bit of a misnomer as it is how the price is viewed by the buyer so a good range of sizes at prices that local inhabitants can afford.

This is a cruel question. Young people need starter homes. Older people would like to downsize (freeing a family home) but not into "sheltered housing". Small, compact homes with access to yard/garden and parking.

Properties for starters, young people.

Affordable homes covers a cross section of the above choices.

Not little boxes, but before housing is expanded the town needs to be improved to cope with any increase.

However, unacceptable use of language has been omitted.



Family homes need proper parking and access roads - the town and services within the town needs improvement - doctors surgeries/schools/community centres.

One and two-bedroom homes, with parking spaces. Most difficulty are the roads, and I think of the poor emergency vehicles.

Mixed housing/retail/leisure.

All housing is totally unaffordable. No specific location but allow for this in any new builds. The only way to enable this of course is the removal of cheap credit/debit but "affordable homes" would be a start.

More homes affordable by young people. "Average age of first time buyer = 45" - ludicrous!

Small starter homes that can only be sold on to people to buy to live in, not to make a business off, letting selling for profit, etc.

Houses that young people can afford esp. on any new development, e.g. Hockcliffe Road.

NO flats, bungalows!

There are too many new homes without commensurate improvements in infrastructure - no sticker on map - covers the whole area.

Mixed age groups - single living.

To release houses from those who are LONG retired. Bungalows are possibly one solution. Otherwise they (we) stay put. Over to you!!

Nearby.

Southside Everywhere (in-fill).

More appropriate housing for elderly to move to would free up housing for young families and first time buyers.

More appropriate housing for elderly in which to downsize. This would release larger properties for younger/1st/2nd time buyers.

Affordable rental properties. Rent controlled. Close to town centre shops and parks.

Alongside canal or river.

More rented properties - with long term security of tenure as is available in Germany for instance.

Social housing is important to me. Having recently bought a house here, I empathise with those who want a home of their own. I also know what it is like to be at the whim of a landlord - it's a terrible feeling when you're unsure where you'll live next year. Everyone needs a home.

Single person accommodation is not available within the area. The building of such units would increase quickly as people turned into couples and families.

With the change in demographics, we will need more older peoples housing, near town centre.

No particular comment.

Starter homes for the younger generation.

Encourage younger members of the community to stay in the village.

Infilling as much as possible on old disused land or buildings anywhere in LB/Linslade to enhance the look.

There is a general lack of affordable homes and social housing. Too much "affordable" housing is not in people's price range. The Government is allowing the developers to call the tune, not local housing need.

We need homes people can afford to buy especially first time buyers.

Growth in appropriate locations but with appropriate infrastructure delivered.

But not on existing green spaces.

Determine what, precisely, is meant by 'affordable' and the associated demographic that can afford them. A general comment with no specific location in mind.

Affordable homes near the centre of town where there is infill development.

With an ageing population more nursing homes will be needed.

Increasing population of older people in Leighton Linslade will require sheltered housing.

Use more existing brown site, field sites and empty buildings. Should be affordable so more shared ownership, housing association homes, etc.

Although more housing is needed, in my view, the majority of this should be affordable housing and that it is built in the most appropriate places with adequate parking made available.

Village style development.

As an older person living in a 4 bed detached house, I would like to move to an (affordable) bungalow.

Hockcliffe needs more 4/5 bedroom houses.

I have marked "family homes" but in fact some of these would come on the market if there were more "older generation" properties - so the mix is the essence of a sustainable community.

We need to provide houses with outdoor space, where families can grow.

We should use existing empty buildings and redevelop these. We should NOT be building more housing estates on green fields. Brown field sites should also be utilised. We need good quality homes with sustainable technology.

We need more suitable sized homes to encourage people to right size. To start the cycle of houses.

Affordable sheltered housing within easy reach of town centre.

I do not think we have room for any more development.

Affordable housing to allow young people to get on the property ladder.

In new developments provision should be made for retired people.

More bungalows needed, retirement village, disabled accommodation.

The lack of affordable housing in East Leighton-Linslade development will not help to address the bigger need for affordable housing in LB.

In Heath & Reach.

Stop building massive crowded estates around Leighton, it just creates massive traffic problems.

UK is getting older = jobs = freed up homes over time.

Homes continued

Hockliffe has seen a lot of development in recent years. I cannot see why it has to have more. Why not Tilsworth/Eggington/Stanbridge? If it must have more please not near the traffic lights of the A4012 from LB. Dangerous enough?

Growing need within easy reach of town centre/supermarkets.

Affordable homes for all age groups. Do we need to have more as thousands are already planned for the east side of Leighton Buzzard?

There are many houses planned for the east side of Leighton Buzzard which need to provide affordable homes for age groups including the disabled.

Homes suitable for the elderly that are affordable - bungalows always seem to carry a hefty premium making them unaffordable.

Why are we not using developer contributions to improve the energy efficiency of the town's existing housing stock? This would offer a much greater benefit than the incremental returns from say moving new housing from code sus homes 4 to 5.

As first time buyers can be nearly 30 sometimes, houses with 3+ bedrooms and parking are desirable.

More affordable homes are needed for young people to get on the property ladder.

Something like _____
View in Dunstable.

I think a mix of all types of housing is needed, but particularly affordable family homes.

Really we need all of the above. Too much property is bought to let.

Prefer mixed tenure not to overstrain particular resources, but LB well placed to serve older communities.

A good mix of housing is essential - avoid infilling which leads to parking pressures and provide efficient bus services.

Mixture of housing needed to cover all needs. Support older generation to move freeing up housing stock.

To release houses from those who are LONG retired. Bungalows are possibly one solution. Otherwise they (we) stay put. Over to you!!

A happy and strong community is a diverse community. Commercial developments will push for an even greater loss of diversity. We need to push for sufficient affordable and social housing to counter balance this!!

A broader range of social and private housing that young people starting out can afford.

For all families.

The property ladder is increasingly difficult to get started on, we appear to attract young couples wishing to start up home in the area, lots of whom are commuters. These will provide future generations in the area and wealth. These need a vibrant town centre to spend spare time in.

More affordable homes needed particularly for young adults and families.

New housing developments are geared towards those on decent incomes - we need more affordable new housing for local people on benefits/low incomes.

The new developments are very expensive and do not help people growing up in LB stay local. Affordable housing.

Sheltered accommodation in warden assisted developments to allow people to stay in their local area, close to amenities.

A small bungalow "village" with all facilities and services for a retired community.

South of Leighton Road (St Christophers) between river and canal could be good location for mixed development of housing for older people (extra care) and retail and offices, cinema, cafés, etc.

The type is less important than the number - we have a severe need for homes of all kinds.

Growth & Infrastructure

Question: With your chosen type of Infrastructure, please pin-point **one** specific place on the map table using your **orange sticker** where you think there is an opportunity. Please expand below on what you would like to see at this location:

We should have a small hospital/ clinic to save resources at the three local (each approx. 12 miles from LB) hospitals for minor treatments.

We need walk-in clinics and definitely more GP surgeries all over LB.

Increased numbers of doctors' surgeries. Waiting time to see a doctor is already up to 4 weeks. This will only get worse as more houses are built.

Cottage hospital type where basic medical practices can be actioned, i.e. x-rays plus a number of beds for aftercare.

We only have 3 doctors in L-L and the population is expanding rapidly.

Pressure on the Leighton Road surgery appears extreme (though may be the same at other practices) - there is a need for additional capacity.

"Whichellos Wharf" has a 12 beds facility. This would make an ideal hospital unit for our town.

We need a hospital.

Leighton Buzzard infrastructure NHS needs more local services and better parking.

2 Upper and 5 Middle Schools not be sufficient, given the expanding population and growth of new estates like Sandhills.

We need more clothes shops in and south of the High Street. The land is owned by CBC so they can promote it!

Need more doctors surgeries or a major health centre/walk in clinic.

It would be great to see a cottage hospital in Leighton, somewhere to get a broken arm/leg plastered. We've waited years for such a facility.

Not enough attention is given to community facilities that can be used by the local community, particularly where there is new developments.

However, unacceptable use of language has been omitted.

As our population is getting older, it would be good to have halls that are easy and cheap for all to use where gentle exercise sessions can be held. These need not be exclusive to the old.

The waiting time for an appointment at a GP is far too long for a non urgent issue so more healthcare facilities are required.

Make compulsory purchase on bits of the old Cattle Market environs to establish what was promised aeons ago!

With the growth in population more schools are needed. My priority is for the Children Centre to be given the funding to respond to the population growth. Specifically the Children Centre "reach" should include Sandhills/Billington Park and children 2 - 3 years.

South Side of High Street needs developing for shopping (as previous plan).

GP care is already at a premium. This must be provided.

For a town this size there is a complete lack of chain stores in the town itself. I don't drive and so for me retail in a park outside of the town would be undesirable. This would also be rubbish for old people. Good quality retail chain stores would give all ease of access, help with town centre and culture in the town.

Good development in the town centre with a variety of shops (NOT charity shops).

We need broadband in the community (better than ADSL 2MB!).

Eggington - We need better broadband.

It's schools and healthcare, really, but as with all the categories, we're being asked to prioritise an impossible-to-prioritise set of requirements.

Improvements in electricity grid are needed to support growth in town. Also, grid improvements must support the requirements of local generation (wind, solar farms, rooftop solar) - battery storage is an important part. Both gas and electricity use can be reduced by encouraging efficient new build.

Easier accessible healthcare.

Arrange easily accessible healthcare and services.

Need to match the development already taken place.

In the town centre no more _____ developments inaccessible to those without transport. Never allow out of town development which have ruined Dunstable and many other small towns.

A healthcare facility would be very good indeed with many benefits like: less traffic on roads (many people could walk), less wasted time for patients (re: necessity to work). This is one thing that LB has been very short for a very long time.

Desperately need healthcare in the form of local doctor for Heath & Reach and north end of Leighton Buzzard. Suggest Shenley Hill Road.

Hospital.

Leisure facilities for young people near to town centre.

Anglian Water to ensure last summer's bad odours in Billington Road are eliminated.

A historic high street and markets, to encourage expansion and development of both - but NOT in outskirts retail park developments.

More clothes shops are needed in the town centre.

These will all need improvement to provide for new homes which will inevitably come to Leighton Buzzard.

If the community is going to thrive as people not just houses - need access to meeting places to learn, meet, play [multiuse halls].

Pond site behind Shell petrol station in Leighton Road. Grovebury Road is a long way if no car from Linslade area.

Some form of additional healthcare or small hospital needed in Grovebury area.

In and off High Street. Not on edge of town.

Town centre - not out of town.

Actually, all of the above are required. The choices do not deal with the question 'where to place homes and services' - so see answer to 'Homes' above. Leighton Linslade is one of the largest settlements in CB - a sustainable location for substantial growth.

The equivalent of an old style cottage hospital.

New leisure centre needed on east side of Leighton - so much traffic through town to get to and from Tiddenfoot Centre. Population growth on east side will make this demand even greater in next few years - it is urgent to plan now.

Football stadium with 3G facilities to bring Leighton Town into the 21st century. Something along the lines of Dunstable Town's Creasy Park.

High speed broadband. Cable TV. Gas.

More should be invested in prevention and care in the community.

More roads and car parking spaces. Traffic congestion is terrible.

The pipework carrying all utilities is old and needs replacing.

Both swimming pools are in Linslade. A pool in Leighton Buzzard would be well used.

More facilities for the youth - I heard a 'cyber' café was turned down a while back - would have been (sounded like) something interesting for the youngsters - maybe a centre funded by industry/Corps in LB/Linslade, e.g. near the bridge.

More utilities for proposed housing development near Chamberlains Barn to Shenley Hill Road.

To help the town build/allow more diverse shops such as clothing/a community centre for local people needed and improvements to the grid to support renewable energy.

Community hospital catering for respite care for the elderly.

It would be good to have more doctors and a hospital nearby.

A decent community hospital would avoid some of the overcrowding at the rather unloved big-scale local hospitals.

Growth & Infrastructure continued

As school pupil numbers rise, it's essential that proper provision is made. There are schools with temporary classrooms over 25 or 30 years old. That's disgraceful.

GPs, walk-ins, specialist health, eg. STIs.

A medical centre with treatment facilities and extended doctor services for the expanded population.

There needs to be a hospital facility in LB and villages. Hundreds of people every day are travelling for "check-ups" and treatments which could be provided at a local hub building. These journeys should not be necessary in a growing town this size. Accommodation for "respite care" for parents with demanding children/relatives and people recovering from illness, etc. is badly needed.

Would like to see a healthcare centre on our estate as at present it's a long walk into the centre.

More doctors for early appointments.

Surgeries are struggling with too many patients on their books. Maybe a large walk-in centre would ease problem.

Somewhere the homeless can go during the day instead of drinking around the town to kill time.

We need improved healthcare for shorter appointment waiting lists. Better retail opportunities in the town centre. Available community centres.

Possibly a cottage hospital for the elderly, and a place where doctors could carry out small operations and procedures qualified to undertake.

This area will be developed and a new leisure centre to compliment Tiddenfoot would be a big asset to this side of town.

Progress High Street south development with a mix of shops (and homes).

"High Street South" development to be progressed with retail units and some housing.

A hospital. It's very much needed - no not in 20 years.

Community centre for all new developments. The closure of the Sandhills Community House was a retrograde step.

Surgery, hospital near where RAF Stanbridge was.

For faith groups to use. Can you please consult us - we want to start a church on the new estates planned. Contact Hockliffe Street, Baptist Church.

Community hospital and/or walk-in minor injuries centre.

The area opposite Tescos is scruffy and could be remodelled incorporating a healthcare centre (next to St Christopher SS).

More doctors and dentists required urgently.

We have been promised a "cottage" hospital for YEARS. Do get on with it.

Need for local hospital especially for elderly as it's difficult to get to L&D, MK and Stoke Mendeville by public transport.

Nearby.

A community hospital.

Healthcare, both hospital and GP, are poorly provided for in LB. As needed are services such as community centres. This will be at breaking point as population increases.

Desperately short of healthcare in L Buzzard. Despite huge rise in population there has been absolutely no increase in GP service.

Exhibition venue (local gallery), electric car charging points.

New housing estates need community centres where people can meet and start groups, clubs, etc. Youth groups, toddlers and play group, scouts ...

Very difficult to choose as all of the above are required.

Sorry, unable to choose - surely all communities require these facilities.

Love clothing stores in the town centre please! I moved here because I really liked the high street, please keep improving! Love Oliver's new record store, butchers, bakers, Harmar's, etc.

Leighton Buzzard is a large town with no local hospital. Also patients are referred to Aylesbury (then High Wycombe or Oxford), Luton (then Bedford) or Milton Keynes then Northampton.

Additional leisure centre including swimming pool.

General lack of GP availability.

Any further development of houses, etc. in L Buzzard will require better transport infrastructure.

Small individual shops that can afford to operate from the High Street area. The High Street is pivotal to the life of the town.

Cottage hospital.

Expansion of Leighton Buzzard has led to a dearth of GPs surgeries/health centres.

The same facilities as Tiddenfoot especially V B pool for aqua, as most of us have to book online at midnight for the next weeks class. They are always fully booked and have waiting lists.

Vital to keep the High Street vibrant and keep a market. Town Centre should be the hub.

We need a community hospital in Leighton Buzzard.

Doctors seem to have taken the greatest hit as a result of LB expansion with not enough new provision.

It is appalling that Leighton Buzzard does not have a hospital or walk-in centre, given its rate of growth.

Develop the south side of LB to accommodate retail diversity and support the town centre/High Street. Larger stores and, for example, DIY stores/discount warehouses to be sited on outskirts of town.

There have been electricity supply problems at All Saints Church - the infrastructure is overloaded. Mobile phone signals need improving.

Desperate need for additional car parking facility and south side High Street development in retail/housing.

Halls for use by voluntary organisations/clubs in Leighton Linslade are hard to find at an affordable price.

However, unacceptable use of language has been omitted.

Growth & Infrastructure continued

It is about time we had a cottage hospital in the town.

We need to ensure we maintain a vibrant retail facility in the town centre around the High Street.

We need the disparate healthcare facilities concentrated - aka - the plan for the building of 2 large surgeries to concentrate healthcare in one/two places.

Hockliffe is in desperate need of a community centre.

Essential for Hockliffe and focus of forthcoming neighbourhood plan.

LB needs a hospital, even a small one. Increase in population will be significant in the future. Access to other hospitals, re: traffic, distance, etc. is difficult, particularly if no car.

We should have a cottage hospital built.

The outer bypass could be expanded. However, we need to use our current housing stock more effectively.

Leisure centre/swimming pool.

Concerted effort to get multiplier into town like Next and Brands.

Local hospital facilities promised many years ago and was never built.

Healthcare available on Hockliffe/Stanbridge Road side of town.

Healthcare is lacking in the east of the town plus the GP surgeries cannot cope at present - there is a great need for a cottage hospital.

All shops and facilities to have: 1. Easy access for scooters and wheelchairs, 2. Electric doors for entry/exit, 3. East access around facility for wheelchairs.

A health centre.

The proposed housing development East of Leighton-Linslade (outline approval) is totally inadequate as there is no provision from first occupancy. Development of Sandhills has shown the considerable need for community facilities and social infrastructure as essential to development. The lack of S106 support (i.e. community house) will have significant impact on the health and wellbeing of new residents (see paper attached).

More schools needed to lower class sizes and another senior school to cover Stanbridge, etc., etc.

More affordable leisure/activity centres.

Local hospital.

Local "hospital" for day surgery, etc.

Gas and Infinity broadband please.

GP practice within residential areas to south/east of town.

Wherever homes are built infrastructure of all facilities listed above must be included. We have large developments already with very little. Space for churches should also be included. Healthcare is most needed.

Wherever homes are built infrastructure of all facilities listed above must be included. We have large developments already with very little. Space for churches should also be included. Healthcare is most needed.

Wherever homes are built infrastructure of all facilities listed above must be included. We have large developments already with very little. Space for churches should also be included. Healthcare is most needed.

Wherever homes are built infrastructure of all facilities listed above must be included. We have large developments already with very little. Space for churches should also be included. Healthcare is most needed.

Wherever homes are built infrastructure of all facilities listed above must be included. We have large developments already with very little. Space for churches should also be included. Healthcare is most needed.

With the houses to be built on the east side of Leighton Buzzard consideration needs to be given to most of these infrastructure facilities particularly a church and meeting place within the development.

Although there are other towns nearby Leighton Buzzard would benefit from more of the big retailers.

In the future we will be in huge difficulties if we don't shift to more active lifestyles. If we fail our health system will be swamped. This has to be the priority.

See as per Jobs and Business section.

We desperately need more doctors surgeries as the existing surgeries are not coping!!

Hospital.

The town has outgrown its one leisure centre. The number of residents calls for more facilities for sport, exercise and entertainment, for example swimming, 10 pin bowling, climbing, athletics.

This is a loaded section as Leighton/Linslade is desperately short of all infrastructure.

Not retail - will be online anyway soon. Probably healthcare and social care though utilities (electricity) needed too.

Provide a central entertainment centre in the area between the rivers (S side only).

Increasing population requires good local schools that children can walk to, reducing traffic congestion.

We have been promised a "cottage" hospital for YEARS. Do get on with it.

We need diverse, accessible retail. I left the US for a life in the UK in part because of a lack of community that was driven by soulless corporate out-of-town retail spaces. I would hate to see LB go the same way; we must focus on a healthy downtown/High Street.

Retail in the town centre are important as they often become places for people to meet. Community centres are important but often are just empty hallways. Retail current small businesses are best.

Independents please! to make a vibrant town centre. We have Dunstable and Bletchley within easy reach for big chains.

Improve and develop the town centre making it diverse and sustainable.

Town centre development/High Street improvements.

Growth & Infrastructure continued

As per previous page, retail but concentrated on the high street and mix of independent and main shops. Not further out of town developments - there are already too many, and traffic is or real issue. We don't want the High Street to die.

I read about the South Side development and I love the idea. This really fits with the Town Centre orientated town that LB is. We really need clothes shops and I love the idea of places for people to go for entertainment, e.g. cinema. This also provides local jobs and keeps expenditure in town.

Sewage drainage from Billington village is currently not fit for purpose for existing dwellings. Recent "settlements" along Stanbridge Road exacerbate the problem.

The villages all need a "village" shop as a community hub.

Bigger swimming pool - or second one on East Leighton development by Vandyke School.

Retail developments around the centre of town are desirable - see Big Plan.



However, unacceptable use of language has been omitted.



Appendix - Supplementary Questions on Feedback Form

Thank you for responding to this consultation.

Your views will help us to shape the Community Plan that will inform the Local Plan, influence development decisions and help direct investment where it is needed. There will also be other opportunities to comment on the Local Plan as it is developed. There will be an opportunity to express your views in more detail at the next stage.

Please answer the following questions:

Gender: Male Female Age range: Under 18 18-25 26-35 36-45 46-64 65+

What postcode do you live at? _____

Which town/village do you shop at most often? _____

I am a local resident I am a Town or Parish Councillor for _____

I am an organisation representative please state _____

Which town/village do you work in (if applicable)? _____

Do you consider yourself to be disabled? Yes No

To which of these groups do you consider you belong? White British Black or Black British
 Asian or Asian British Mixed Chinese Other Ethnic group (please write in) _____

Would you like to be informed of the arrival of the Consultation Draft of the Community Plan for your area? We can notify you of its publication.

Be assured that your personal details will not be published in any report or passed to a third party.

By post or email

Name: _____

Address _____

Email: _____

Please tick if you would like to be kept informed of Local Plan Updates.

After completing this feedback form please place in box at front door.

Or post back to us at Local Plans, Priory House, Monks Walk, Chicksands, Shefford, Bedfordshire SG17 5TQ

Data Protection Act 1998 Please note that your personal details supplied on this form will be held and/or computerised by Central Bedfordshire Council for the purpose of the Local Plan. The information collected may be disclosed to officers and members of the Council and its' partners involved in this consultation. Summarised information from the forms may be published, but no individual details will be disclosed under these circumstances. **Your personal details will be safeguarded and will not be divulged to any other individuals or organisations for any other purposes.**

Sign up for email updates ...

 www.centralbedfordshire.gov.uk/localplanupdates

More information on the Local Plan can be found here...

 www.centralbedfordshire.gov.uk/localplan

Appendix – Supplementary Questions Summary

Public Consultation Leighton Buzzard Attendees Record

	Gender	Age	Res/Cllr/Org	Disabled?	Ethnic Group
Response	Male: 90 (48.9%)	Under18: 0 (0.0%)	Resident: 179 (97.3%)	Disabled-Y: 12 (6.4%)	White British: 79 (95.2%)
	Female: 94 (51.1%)	18-25: 0 (0.0%)	Councillor: 7 (3.8%)	Disabled-N: 175 (6.4%)	Black or Black British: 0 (0.0%)
		26-35: 9 (5.0%)	Organisation: 13 (7.1%)		Asian or Asian British: 1 (1.2%)
		36-45: 14 (7.8%)			Mixed: 1 (1.2%)
		46-64: 54 (30.0%)			Chinese: 0 (0.0%)
		65+: 103 (57.2%)			Other Ethnic Group: 2 (2.4%)
Nothing Recorded	22	26	22	19	22
Total	206	206	206	206	206

Homes



GROWTH & Infrastructure



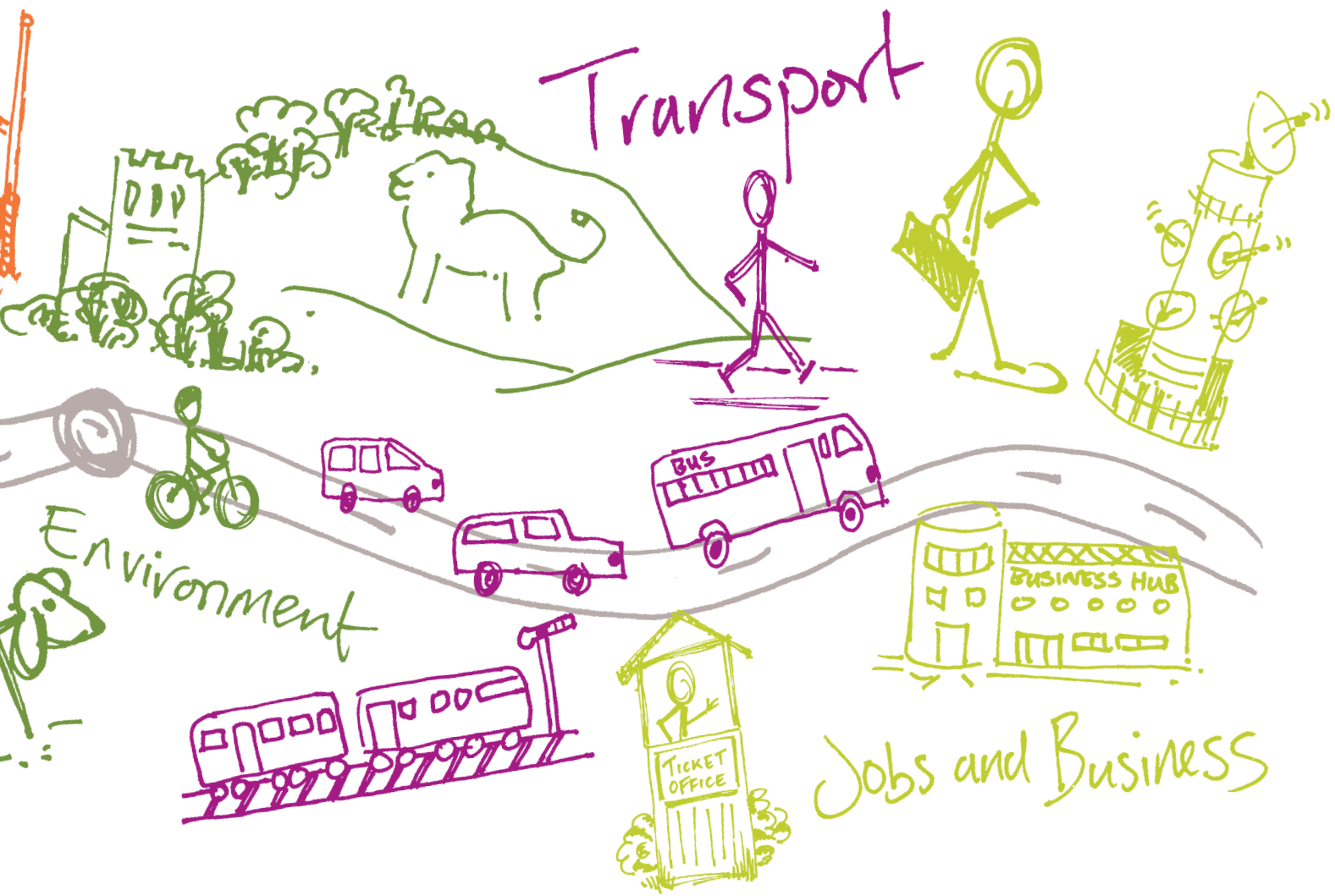
NEW PLACE



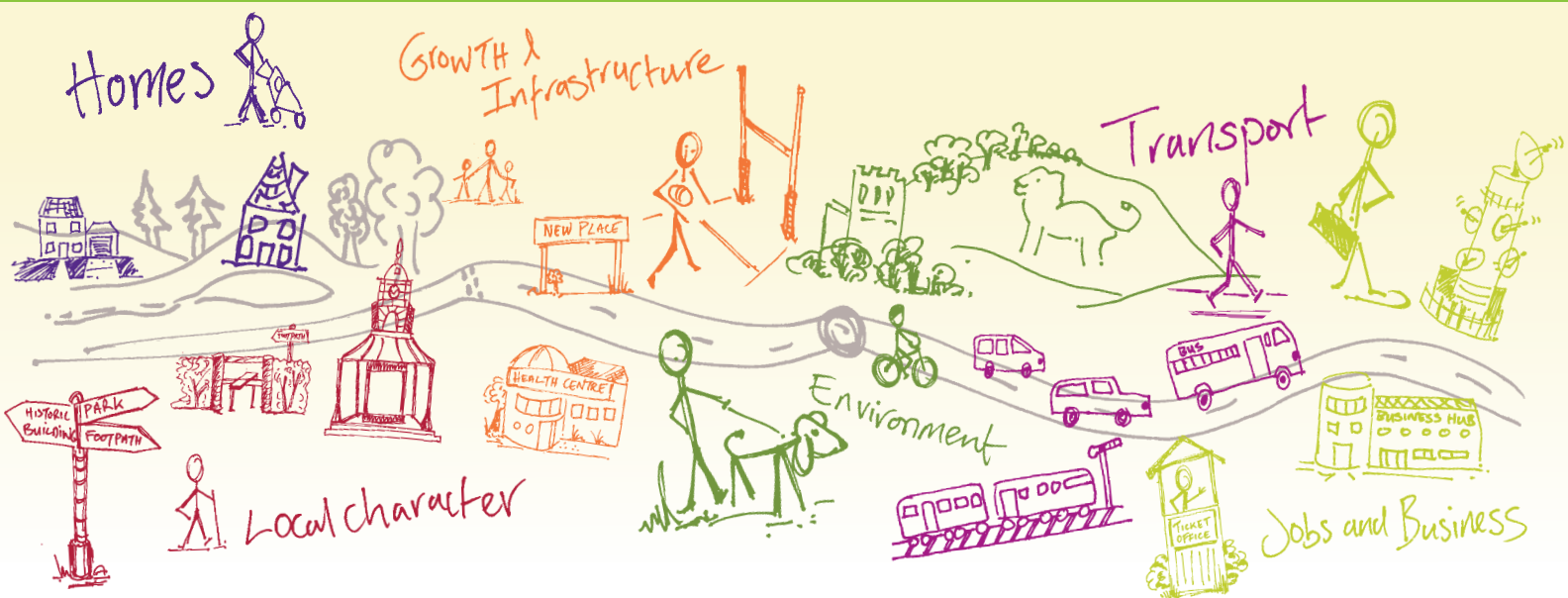
Local character



A great place to live and work.



Shaping where you live 2035



What happens next?

Community Planning is a continuing process and this Community Plan, which collates all the information gathered at the event, is the first time this type of information has been collected. There will be a series of actions arising from the Community Plan which are likely to influence or shape planning policy in the Local Plan, decisions on planning applications, and decisions on where money arising from development should be spent. These actions are identified in total within the 'Overview Statement of Community Planning' which details how they will be dealt with. Central Bedfordshire Council will seek to work in partnership with organisations including Town and Parish Councils, developers and other agencies to deliver on these actions.

For more info on community planning ...

www.centralbedfordshire.gov.uk/community-planning

More information on the Local Plan can be found here...

www.centralbedfordshire.gov.uk/localplan

Disclaimer Central Bedfordshire Council is the statutory Planning Authority for the area and therefore is bound by legislation and must have regard to government guidance on planning matters.

Community Plan produced in consultation with Central Bedfordshire Council supported by www.lda-design.co.uk

This document contains:

Contains OS data © Crown copyright and database right 2016
Contains Royal Mail data © Royal Mail copyright and Database right 2016
Contains National Statistics data © Crown copyright and database right 2016

Central Bedfordshire Council:
© Crown Copyright and database right. 2016 Ordnance Survey 100049029

Central
Bedfordshire

A great place to live and work.