



Town & Parish Council Conference

13th January 2011



Welcome

Councillor Tricia Turner MBE
Leader of the Council

Let's Talk Together

Community Safety
Setting local priorities

Key topic
Discussion and feedback

Your views
Message board to capture your views

Engagement Zones
Health, Local Services, Business, Training & more



This map is based upon Ordnance Survey material with the permission of Ordnance Survey on behalf of the Controller of Her Majesty's Stationery Office © Crown Copyright. Unauthorised reproduction infringes Crown Copyright and may lead to prosecution or civil proceedings. Central Bedfordshire Council. Licence No. 100049029 (2010)

Area	Date / Time	Venue
Cranfield, Marston and Woburn	17 January 2011 5-7pm	Holywell School, Red Lion Close, Cranfield, Beds. MK43 0JA
Sandy and Biggleswade	24 January 2011 5-7pm	Biggleswade Fire Station, Chestnut Avenue, Biggleswade, Beds. SG18 0LL
Shefford, Stotfold and Arlesey	1 February 2011 5-7pm	Priory House, Monks Walk, Chicksands, Shefford, Beds. SG17 5TQ
Leighton Buzzard and Linslade	15 February 2011 5-7pm	Leighton Buzzard Day Centre, Duncombe Drive, Leighton Buzzard, Beds. LU7 1SD
Dunstable, Houghton Regis and Rural	28 February 2011 5-7pm	Bedford Square Community Centre, Tithe Farm Road, Houghton Regis, Beds. LU5 5JF
Ampthill and Flitwick	8 March 2011 6-8pm	Redborne Upper School and Community College, Flitwick Road, Ampthill, Beds. MK45 2NU
Leighton Rural	22 March 2011 5-7pm	Toddington Fire Station, Dunstable Road, Toddington, Beds. LU5 6DR



The Impact of “Localism” in Central Bedfordshire

Councillor Richard Stay
Deputy Leader and Portfolio Holder
Policy & Performance

Localism Bill

- Shift of power from the Centralised state to local communities
 - Lift the burden of bureaucracy
 - Empower communities to do things their way
 - Increase local control of public finance
 - Diversify the supply of public services
 - Open up the Government to public scrutiny
 - Strengthen accountability to local people



“The job of government is not to run people’s lives. It is to help people run their own”

Nick Clegg

Localism Bill – key elements:

- Community empowerment
- Strengthening local democracy
- Planning reform



Community Empowerment

- Right to challenge
- Right to buy
- Local referendums
- Right to veto excessive Council Tax rises



“Citizens: the new Super heroes”

Strengthening local democracy

- General power of competence
- Local Authority governance
- Predetermination
- Standards Board abolished
- Transparency



Planning Reform

- Neighbourhood planning
- Changes to Section 106 funding
- Community right to build
- A duty for developers to consult before submitting planning applications

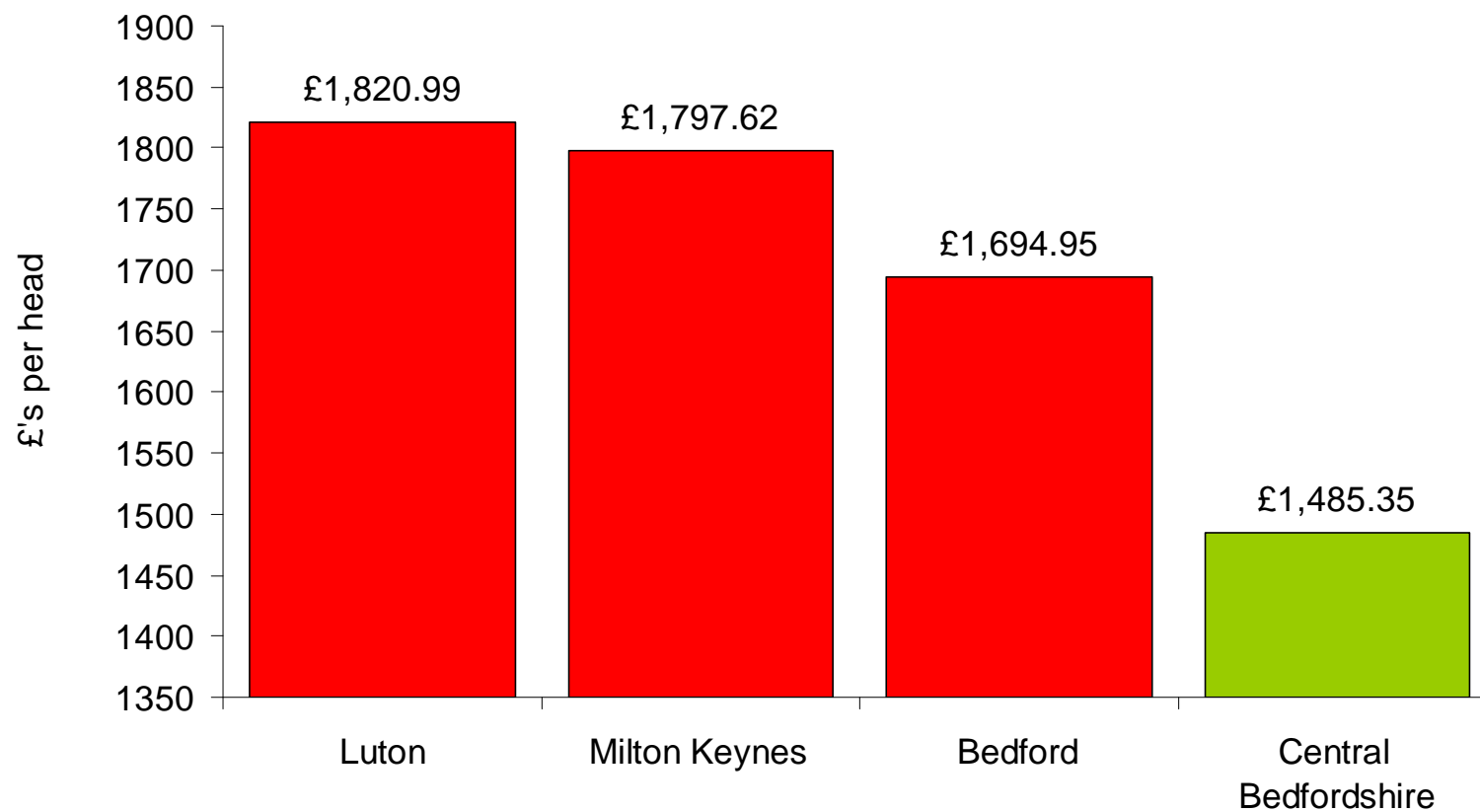


Opportunities of the Future – Realities of the Present

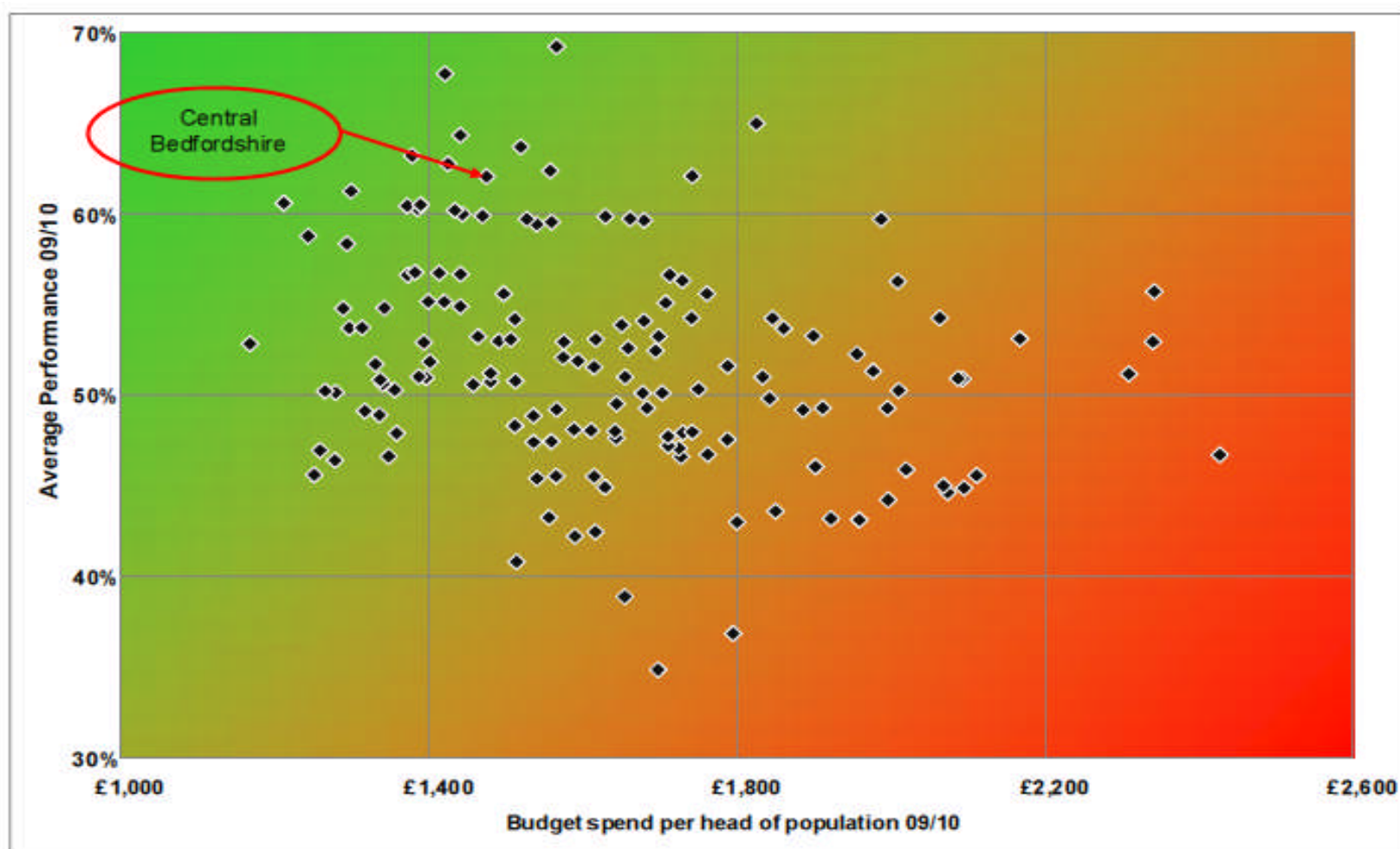


Value for Money

Total Cost of Services 2010/11



Comparative Performance - Value for Money



Comparative Performance - Overall

Central Bedfordshire Council compared to CIPFA Nearest Neighbours	Overall Performance
Central Bedfordshire Stockport South Gloucestershire Warrington West Berkshire Bath & North East Somerset Cheshire East Milton Keynes	Top quartile
Wiltshire Swindon Cheshire West and Chester Solihull Bedford Bury	Second quartile
Medway Calderdale	Bottom quartile

Draft Budget Headlines:

- 0% Council Tax increase
- Investment of £180m in local services next year
- Additional funding for children's services and social care for older people
- £20m savings to bridge the gap
- £12.7 – from back office
- £6.7 – from service reductions, reconfigurations or closures.

Big Society in Central Bedfordshire



Devolvment of Services



Big Litter pickup

Roundtable Discussions

In partnership with Central Bedfordshire Council:

- What role can Town & Parish Councils play in helping communities to do more for themselves?
- What actions can Town & Parish Councils take to help manage the impact of budget cuts?

Roundtable Discussions

Feedback



In the spotlight

Cllr Ken Crossett
Chairman, Slip End Parish Council



In the spotlight

Cllr Adrian Besant
Chairman, Tempsford Parish Council

TEMPSFORD PARISH COUNCIL

ALL OUR OWN WORK!



































Tempsford Parish Website

- www.tempsford.org
-
- [Home](#)
- [Parish Council](#)
- [Tempsford Times](#)
- [Parish Plan](#)
- [History](#)
- [Heritage Trail](#)
- [Village Hall](#)
- [Millennium Garden](#)
- [Methodist Chapel](#)
- [Planning](#)
- [Useful Contact Details](#)
- [Police/Security](#)
- [Mobile Library](#)
- [Local Clubs](#)
- [Ivel Sprinter](#)
- [Cemetery](#)
- [Links](#)
-
- **Parish Council news**
- Salt bins have been ordered from Central Beds Council in late summer, the Parish council has been following up on the order to have them installed as a matter of urgency.
- The swings in the Church End play area have been moved and the slide rebuilt.
- The landscaping maintenance work in the churchyard is complete.
- BT have disconnected and removed the public telephone in Church End. The Parish Council voted to adopt the telephone box itself, so the structure will remain in place (the phone box has only been used 28 times in the last 12 months).
- The noticeboard in Station Road has been moved making it more visible.
-

TEMPSFORD TIMES

Issue 25
Jan/Feb 2011

The village magazine of Tempsford, Bedfordshire www.tempsford.org



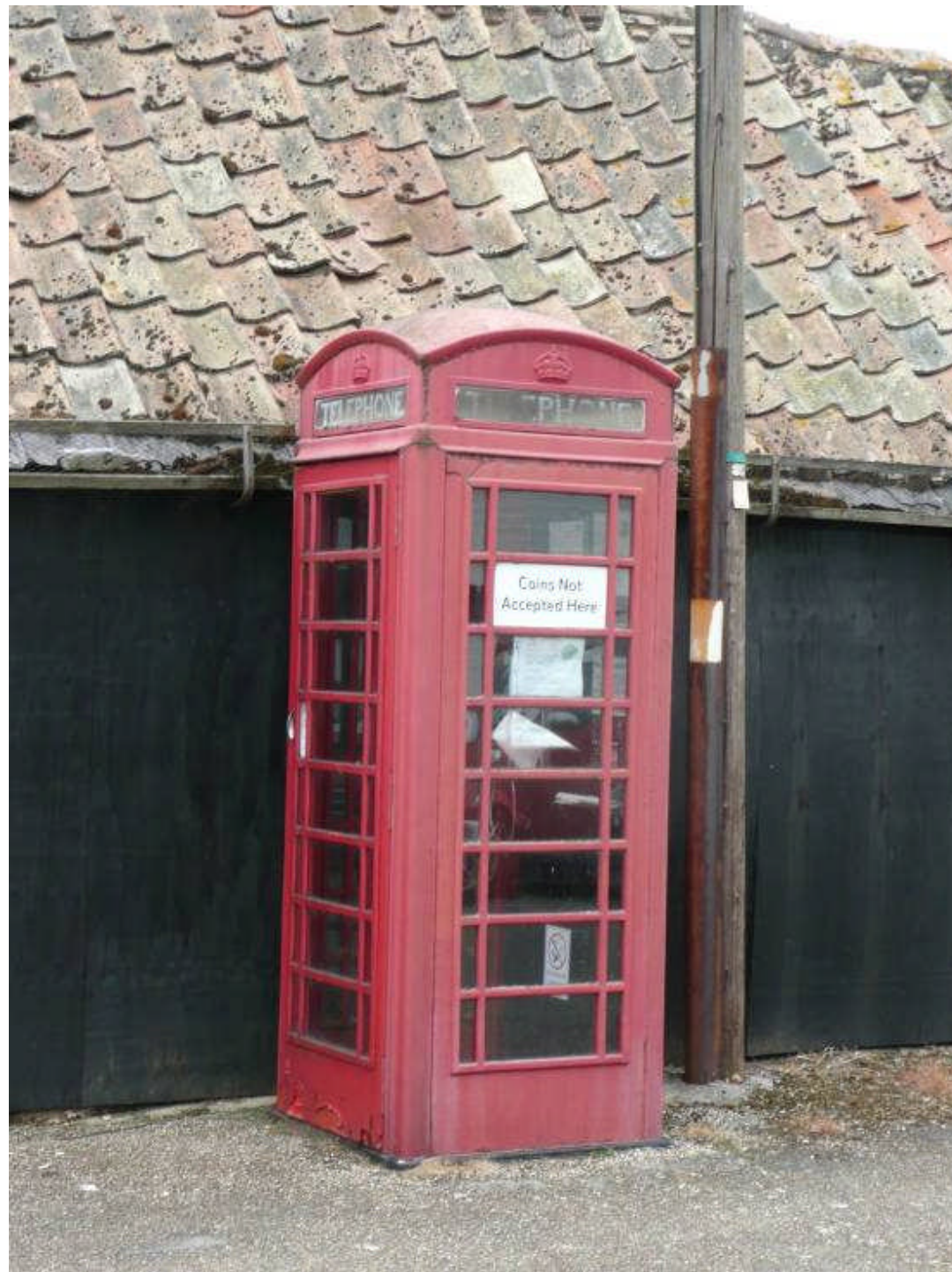
A WINTER'S LANDSCAPE NEAR "THE ANCHOR"

In this issue:

- Salt bins are on their way! (p.19)
- Millennium Garden celebrates 10 years (p. 12)
- More Tempsford Archive material found (p. 14)
- The year's weather in summary (p. 4)

plus all your local news and info

TEMPSFORD TIMES is published bi-monthly by Tempsford Parish Council and St Peter's Parish Church, Tempsford, and is delivered free to all households in Tempsford. Please support our advertisers mentioning TEMPSFORD TIMES whenever you do so. **Articles are accepted for publication on the condition that they are included at the publishers' discretion and may be edited if felt necessary. The views expressed by contributors are not necessarily those of the Parochial Church Council or the Parish Council.** Articles for the next edition should be sent by Feb 20th to the Editor at 92 Station Road, Tempsford; advertising enquiries to Jeff Cloughton on 01783 408408 www.tempsford.org







Policing in Bedfordshire

Chief Constable Alf Hitchcock



Question Time



Closing remarks



Thank you