

# Appendix

## Community Plan

Covering the parishes of Ampthill,  
Steppingley, Flitwick

Community Area 7

## This Community Says...



# Appendix -Feedback Form

## Local character

**What we have we love. Our history, countryside and communities. We need to build, with care to enhance what we have.**

☐ NO ISSUES

Please select **one** type of Local Character from the list below that you would most like to see protected or improvements made within your local area:

- A. ☐ Built Heritage (e.g. ancient monuments, old buildings, memorials)
- B. ☐ Landscape Heritage (e.g. historic parks, protected landscapes)
- C. ☐ Open space natural (e.g. countryside, nature reserves, viewpoints)
- D. ☐ Open space man-made (e.g. parks, common land, village green)
- E. ☐ No improvements

With your chosen type of Local Character, please pin-point **one** specific place on the map table using your **red** sticker where you think there is an opportunity. Please expand below on what you would like to see at this location:

## Transport

**How do we get around? With more of us on our cycleways, roads, rail. How do we improve & maintain our transport links?**

☐ NO ISSUES

Please select **one** mode of travel from the list below that you would most like to see improvements made within your local area:

- A. ☐ Vehicular
- B. ☐ Bus
- C. ☐ Train
- D. ☐ Cycle
- E. ☐ On foot

With your chosen type of Transport from above, please pin-point **one** specific place on the map table using your **pink** sticker where you think there is an opportunity. Please expand below on what you would like to see at this location:

## Jobs and Business

**Where will everyone work? Supporting local businesses to grow & attracting new business. We need to create jobs for all.**

☐ NO ISSUES

Please select **one** type of Business from the list below that you would most like to see investment in to improve business or jobs in your local area:

- A. ☐ Industrial parks
- B. ☐ Business parks
- C. ☐ High street development
- D. ☐ Local retail units
- E. ☐ Small-start-up office centres (innovation hubs)

With your chosen type of Business from above, please pin-point **one** specific place on the map table using your **lime** sticker where you think there is an opportunity. Please expand below on what you would like to see at this location:

## Environment

**Our environment is important. It influences how & what we create.  
We need quality development.**

☐ NO ISSUES

Please select **one** of the Environment types from the list below that you consider the most valuable attribute to look after for the future within your local area:

- A. ☐ Renewable energy  
B. ☐ Pollution (Air)  
C. ☐ Pollution (Noise)  
D. ☐ Open Space - wildlife habitats  
E. ☐ Flood risk

With your chosen type of environmental issue from above, please pin-point **one** specific place on the map table using your **green** sticker where you think there is an opportunity. Please expand below on what you would like to see at this location:

## Homes

**Homes for every stage of life. A house is not a home until it's lived in. We all need a home we're proud of.**

☐ NO ISSUES

Please select **one** of the types of Homes from the list below that you consider are needed within your local area:

- A. ☐ Older generation (downsizing/sheltered)    B. ☐ Single living (lifestyle/separation)  
C. ☐ New starter homes    D. ☐ Family homes    E. ☐ Affordable homes

With your chosen type of Home from above, please pin-point **one** specific place on the map table using your **purple** sticker where you think there is an opportunity. Please expand below on what you would like to see at this location:

## Growth & Infrastructure

**Where to place homes & services. Supporting market towns, villages & new settlements.  
We need to plan places to grow communities.**

☐ NO ISSUES

Please select **one** Infrastructure facility from the list below that you consider is most needed in your local area:

- A. ☐ Healthcare    B. ☐ Schools    C. ☐ Retail    D. ☐ Community Centres  
E. ☐ Leisure facility (leisure centre, play areas etc.)    F. ☐ Utilities improvements (telecoms/electricity/gas/foul treatment)

With your chosen type of Infrastructure from above, please pin-point **one** specific place on the map table using your **orange** sticker where you think there is an opportunity. Please expand below on what you would like to see at this location:

# Appendix - Feedback Form Summary

The following data for Community Area 7 was collected at the event held on Thursday 16th March 2017 at The Rufus Centre, Flitwick from 2:30pm until 7:30pm using questions from the feedback form illustrated on the previous page.

Feedback Form Summary						
Response	What would you most like to see protected or improvements made?	Local Character	What would you most like to see improvements made in?	Transport	Would most like to see investment in to improve business or jobs?	Jobs & Business
No Response		3		10		24
A	Built Heritage (e.g. ancient monuments, old buildings, memorials)	7	Vehicular	34	Industrial parks	1.5
B	Landscape Heritage (e.g. historic parks, protected landscapes)	14	Bus	28	Business parks	8.5
C	Open space natural (e.g. countryside, nature reserves, viewpoints)	89	Train	27	High street development	50.5
D	Open space man-made (e.g. parks, common land, village green)	18	Cycle	15.5	Local retail units	20.5
E	No improvements	2	On foot	15.5	Small-start-up office centres (innovation hubs)	21
F	No F question on this theme	0	No F question on this theme	0	No F question on this theme	0
Nothing Recorded		11		14		18
Total		144		144		144

	What do you consider the most valuable attribute to look after for the future?	Environment	Which you consider are needed the most?	Homes	Which you consider are needed the most?	Growth & Infrastructure
		7		18		7
	Renewable energy	7	Older generation (downsizing/sheltered)	40.5	Healthcare	76.8
	Pollution (Air)	25.2	Single living (lifestyle/separation)	4.5	Schools	14.5
	Pollution (Noise)	5.8	New starter homes	12	Retail	9.3
	Open Space - wildlife habitats	88.2	Family homes	7	Community Centres	5.5
	Flood risk	0.8	Affordable homes	27	Leisure facility (leisure centre, play areas etc.)	8
	No F question on this theme	0	No F question on this theme	0	Utilities improvements (telecoms/electricity/gas/foul treatment)	7.8
		10		35		15
		144		144		144

## Note

The public were instructed to only tick one category for each theme. Where an individual ticked more than one category, their choices are divided evenly across the categories.

## Local Character

**Question:** With your chosen type of Local Character, please pin-point **one** specific place on the map table using your **red** sticker where you think there is an opportunity. Please expand below on what you would like to see at this location:

Amphill Park must be protected including its vista.

View across Marston Vale should be preserved and Millennium Country Park expanded.

The whole area is very picturesque we need to preserve the Green Belt and all historic assets, all of which need to be protected.

Keep Green Belt and protected places where people can go with the air not polluted.

ALL green belt and greensand ridge.

NLP390 is Green Belt and Government has recently said that Green Belt should be retained.

Site NLP390 is green belt and should not be built on.

Protect natural open space/countryside and green belt around Amphill (i.e. between Flitwick and Maulden and Amphill).

Protection of countryside and the green belt surrounding Amphill. It is disappearing fast! Keep green space between Amphill, Flitwick and Maulden.

Keep and preserve the green areas in and around Amphill. Essential for everyone's health and wellbeing.

Open space where young people can play. More houses are being built but appears not to be more general play area.

A park with gardens and a nice place to spend some time.

Deer and animals being herded into corridors between building developments.

Site NLP390 is Green Belt land and not for building houses on - reservoir could cause flooding.

Open spaces between the villages to preserve and encourage wildlife habitats. NLP053 NLP390 IS GREEN BELT! KEEP IT.

Preserve the existing wildlife and environments. Constant building around here destroying habitats and character of the area. Please keep Green Belt ALP053/NLP390.

It is important to preserve and improve the countryside for future generations. Development on prime green belt land should be almost non-existent.

Flitwick Manor parkland - to preserve local open space and provide division between Flitwick and Westoning. Preservation of "Green Belt".

I would not like to see housing developments on open natural space. I want to be able to go walking and have nature on my doorstep.

Protect the centre and built heritage of Amphill.

I would like to see the area remain as it is. It is a delightful place to live and work.

Owners of properties (in Amphill Centre) (e.g. grade II/I listed) and Georgian style properties to improve façade, tidy appearance - particularly 1st and 2nd storeys, e.g. pharmacy in Amphill very scruffy.

With all the building that is going on, I would like to see wildlife having a central place in planning. Wildlife population is at a critical level in this area.

Country park in Flitwick. I am concerned that land is available and no visible progress has been made.

Avoid too many homes in close proximity. Nature reserves between developments.

High quality agricultural land preserved. Settlement separation area between Amphill and Maulden preserved.

Protect open spaces and current green belt from further development. ALP053/NLP390 should not be developed to protect habitat around Amphill.

Perfect site for a country park. It joins the historic Bunyan Walk, criss-crosses streams and a haven for wildlife.

The essential historic character of Amphill centre and park should not be changed or overwhelmed by, for example, extra traffic.

Protect the countryside around Amphill - don't allow more development. ALP053/NLP390 should remain green belt.

Flitwick Moor. Better parking and paths.

Development of Flitwick Moor to allow access to all parts of the community.

Amphill Park used by so many for sport and recreation.

Develop park and other open spaces for leisure.

More leisure activities and facilities using resources there.

Local amenities cannot support any further large scale house building as town centre would be gridlocked.

Nature reserves.

Protection of regionally rare grassland at the Parish Church in Flitwick.

Flitwick Moor is precious and contributes to many residents daily lives and wellbeing.

Maintain open space between Amphill and Maulden and Amphill and Flitwick.

The greenfield area between Amphill and Maulden must be maintained. Any building work in Maulden must take place from the current buildings/centre in Maulden and not from the Amphill/Maulden boundary. Therefore this is an opportunity for Greenfield to be maintained and the Amphill boundary not to be extended into Maulden.

Open space for walkers, runners - which isn't developed or a park. A valued open area for both Steppingley and Flitwick.

I don't think Flitwick/Steppingley and the surrounding locations can cope with much more residential development. These locations still benefit from being rural and should stay like this - especially given the scale of development over the past 5 years - especially in Flitwick. Avoid development NLP039/NLP408.

Retain open space and viewpoints beyond Flitwick Wood.

Just maintaining this countryside. It's a space to walk and breathe, away from traffic. It's also important agricultural land and a haven for wildlife. A safe passage between Amphill and Maulden - again traffic free.

## However, unacceptable use of language has been omitted.

To expand the existing ROW network to create as many circular routes as possible.

Danger of natural character being obliterated by developments.

Open spaces need to be left alone.

Retaining open space between Ampthill and Maulden and not developing an area that while in Maulden would practically enlarge Ampthill by a third.

In an area being developed it's really important to keep open space to stop conurbation and leave areas of open space for walkers and runners.

Steppingley has countryside on Rectory Road which needs to be preserved.

To make more ROW.

More reserves need to be created. Improvements have to be made with care, look at Ampthill Park, it has been destroyed and far too many people are continuing to do so.

Fields. Protect present woodland, maintain wildfowl pond, clean out storm drain.

Maintain gaps between settlements (Steppingley).

The character of Ampthill town centre must be protected.

Ampthill is a special place (town). It is becoming almost like a large town.

Keep open areas on outskirts of town.

Around Ampthill.

Would like this to be unspoilt. Great open space - well used. Haven for wildlife. NB: Would like to have included many other areas.

New parkland between Ampthill and Flitwick behind Flitwick Industrial Estate and on Ampthill side of road.

Would like A - D maintained.

Build homes on brownfield sites. Also revive local small businesses. Large ones have places like Milton Keynes.

We need to preserve open spaces around the villages.

I would like to see this remain as open space.

Protected - this area is used greatly by locals for leisure, i.e. dog walking, cycling very much needed for health and environmental issues.

A, B, C & D are all very important. Brownfield sites should be used where possible.

Land between Ampthill and Maulden from Everitts Field across to be protected.

Countryside protected.

Protect countryside.

Countryside protected around here.

Older towns were not built for today's traffic and population. Expanding these creates huge problems.

Leave this space alone. Only unspoilt area.

I would like to see this area protected - it is used by people for walking.

Maintain open vistas and avoid development joining up distinct villages.

I do not want Steppingley to be joined up to Flitwick, as it is a village. Villages around here, e.g. Flitton, Greenfield and Wardhedges, have a tendency to amalgamate!

Improvement of play equipment. More sports play (e.g. basketball court). Regenerate playground with better security to ensure vandalism does not ruin it again

**GREEN BELT LAND TO BE PROTECTED.** The site at Hill Farm should not be built on. It is green belt land, building on the site would merge Ampthill and Maulden, the local infrastructure would not be able to cope. People walk, run, walk dogs here and it should be protected. Site ALP053 and NLP390.

Green belt land should not be developed. Full of wildlife. Lots of walkers use this land.

No more buildings, etc. Leave to countryside.

We should keep our Green Belt and green open spaces as villages are just going to end up joined up and also can lead to flood risk as there is not enough land left for it to drain away, becomes an urban sprawl.

There is a need to protect the open natural space that surrounds the area, providing much needed wildlife support, vegetation, nature.

The open space at this location serves to provide the visual boundary between Flitwick and Steppingley. This is an invaluable natural asset to the local wildlife.

I would like to see this area left as it is. It is green belt for a reason. I don't want anything built.

This is green belt land and should not be developed on.

Beautiful area. Many people enjoy walks past the church through the fields. This unspoilt area is one of the few left in Ampthill. We have to maintain the beauty and character of the town before it is ruined by too much residential development. Glebe land is also important to our town's heritage.

Maintain character of Ampthill town centre.

Green belt should be protected. The site at Hill Farm should not be built on as it is green belt land, and will merge Ampthill and Maulden. Site ALP053 and NCP390. Infrastructure can't cope with more large scale development.

We moved to Ampthill because of the open natural space.

More trees being planted. Safe areas for wildlife. Conservation areas. Places for communities to walk and enjoy in peace.

There is too much building on our beautiful countryside! This needs protecting to maintain the character and village feel.

Preserving green belt and open spaces around Ampthill, e.g. around Houghton House, preserving views and countryside - limiting new building works.

Park in centre of Flitwick but more needed on housing estates.



## Transport



**Question:** With your chosen type of Transport, please pin-point **one** specific place on the map table using your **pink** sticker where you think there is an opportunity. Please expand below on what you would like to see at this location:

### Parking and access.

It needs to be safer to cycle in the area. Currently too much traffic going through Ampthill and Flitwick.

All villages need transport for young and old and this form of transport is the only way. Cycle, foot, etc. is very limiting. Ampthill is car nightmare.

We must get people to use cycles and need more cycle ways.

Ampthill is a small town with attractive villages - in theory easy to cycle. The amount of traffic makes this dangerous and unhealthy!

### Bus and train.

The roads and infrastructure of Ampthill will not cope with any further development.

More regular bus service to Bedford from Ampthill.

More regular buses to Bedford and Milton Keynes.

All linked. Reduce vehicular traffic by improving others. Bus links to MK required. Reducing traffic in town centre would increase cycle use.

A new train station with proper parking.

More and more people will continue to commute to London. Train service needs to improve, e.g. service arriving on time.

A big improvement on roads, corridor or bypass to avoid Flitwick, Westoning and Ampthill. The amount of traffic is becoming a problem.

Bus to more locations, e.g. Luton. Train station parking.

More buses and trains.

Footpaths and cycleways between villages.

Cut down on cars - pollution and gridlock in Ampthill as a result of over building.

Extra bus service to Milton Keynes.

A bus stop by Gas House Lane would encourage locals to use bus to Bedford and Flitwick. It would also be next to car parking spaces.

Roads which feed from the A5/M1/A6 must be brought up to an acceptable standard to serve the local residents. Proper road surfacing/speed control, etc. are essential.

Modern railway station at Flitwick with disabled access and bus/rail interchange. Need for CBC to engage with bus operators, rail industry and all stakeholders concerned.

By knocking down Tesco!!! I'm not sure where a decent small bus station would be ideal but not near the railway station as it is already overcrowded there.

Centre of Flitwick at a standstill and getting worse. Need to rethink Tesco and train station access - too much competitive flows.

Additional bus services from Ampthill/Flitwick to Milton Keynes.

Off road cycle paths between Ampthill and Flitwick.

My work means I have to travel at times not convenient for public transport. As well areas not covered by buses, etc.

Ban all on road parking within 100m of any junction in whole area or widen mouth of junction and create mini roundabouts.

A cycle way along Froghall Road and Steppingley Road, Flitwick to allow cyclists safety when travelling from Ampthill to Leisure Centre and Station.

Parking is a problem.

Greater choice is needed to be given to the local population and try to avoid too much dependency on the car. More and frequent bus routes would help.

Train station unfit - we are in need of one - please progress to make travelling more accessible.

Improve accessibility for wheelchairs/pushchairs, etc. Access from both HIGH ST and existing points.

Restrict development to restrict number of cars on local roads.

Ampthill badly needs some form of bypass for through traffic and parking for local traffic - already a problem and set to get much worse with housing growth.

Restrict development of area -roads in Ampthill/Flitwick are full and becoming dangerous.

Improve the congestion at Tesco roundabout and over the Flitwick railway bridge.

Create Park & Ride for train station and help keep/reduce traffic in town centre.

Bus links to villages and to run later.

As traffic increases - some control will be needed in Ampthill centre.

More regular bus service to villages and larger towns and that have links to other modes, i.e. trains.

Road improvements in town centre or build local bypass.

Road improvements around the town centre. If possible parts left safe for shoppers on foot.

A permanent solution to vehicular congestion in the centre of Flitwick.

Cycle/foot path to west of A507 would enable people to cycle to work on industrial estate. Improve footpath between railway and allotments to join up with new housing on Froghall Road.

Various parking restrictions required on main routes to allow a free flow of traffic.

The centre of Ampthill is too congested. There is an opportunity to reduce/restrict traffic in the Main Street - still allowing traffic to access Bedford Street/Ampthill Waitrose.

Improve disability access in/around Ampthill especially wheelchair access via paths and to services/facilities.

There is only one main road into and out of Flitwick - with more and more developments there is more and more traffic - and therefore congestion. Think this points more to enough is enough rather than how do you cram more in!!!

## However, unacceptable use of language has been omitted.



Still a need for proper, reasonably-priced parking at Flitwick station. (Also vital to open a station for Thameslink trains at Wixams. If not, even more commuters will drive to Flitwick.)

Access up and down Oliver Street is becoming more and more difficult. It is a residential street with access to two doctors surgeries, ambulance station, fire station, elderly day care centre, pre-school and lower school, not to mention the motor garage. Road parking restricts the flow of traffic and at peak times becomes ridiculous, also pushing traffic onto other residential back roads.

To create more footpaths and paths for safe walking to reduce vehicular movements.

More control of traffic flow.

More footpaths along Maulden.

Footpaths in town centre need to be safer for pedestrians.

Maulden Road in Flitwick/Flitwick Road in Maulden. Creation of a footpath.

We need better parking and more train seats to London.

To make walking more user friendly.

Cycle paths - to encourage less traffic.

Amphill town centre is totally congested and when Wixams, Steppingley Gardens and other developments are complete, the problem is going to be exacerbated.

Improve parking at Flitwick.

More info on link ride buses.

Better maintained roads.

More connected footpaths to local places, e.g. Steppingley to Amphill, and more direct.

After the houses are completed, then this junction will not be able to cope with the traffic - roundabout required.

How are all the new people moving into the area going to park at Flitwick Station? The parking is full for those going to work in London, etc. How are the 500 homes being built going to get on the 507 road - it is going to be impossible!!

I'd like to see Amphill train station opened.

Station at Amphill.

More frequent services.

Pinch points in Amphill should be made one way, e.g. north up Dunstable Street, east along Oliver Street.

All bus locations in Amphill. A better, well-timed service to suit the community - not the bus companies.

Better bus service so that connections to train are adequate.

Flitwick Station needs to be enlarged to cope with increased passengers and traffic.

Road conditions locally are appalling. Resurface using smoothest finishing surface available to save wear and tear to vehicles. This is also more fuel efficient. Try cycling on rough and smooth surfaces to feel the difference in energy required.

Open Amphill Station - plenty of room for parking in Station Road off bypass.

Some sort of rules need to be drawn up on cycling in built up areas on pavements. This is a danger to pedestrians as cycles no longer have bells and cannot warn pedestrians they are approaching from behind.

Bus service from Amphill to Flitwick Station could be improved.

Bus service to Flitwick station improved.

Cycleway from Steppingley to Flitwick enabling commuters to cycle safely to the station.

Repair of footpath/pavements, dangerous as they are.

Most pavements are uneven. Compare Amphill Road to Flitwick Road in Amphill (I have contacted MD Beds re: this, and am still awaiting the results of 2016 survey).

Increase bus services to Milton Keynes. Enable workers to commute to MK and reduce further car requirements. Provide later bus services to and from Bedford. Workers held up at the office often miss the last bus services and therefore drive instead.

Amphill station to be reopened - many people commute to London and clog up the roads driving to Flitwick. Opening Amphill station would enable people to walk or cycle to the train. More frequent and faster trains to London needed as already people have to stand on the commute in - this is just going to get worse.

Needs to be safer to cycle. Roads not suitable for more cars.

Better roads and paths, etc.

The centre of Amphill is not wide enough for all the traffic, it can't be made wider. Should have a priority for vehicles by Costa's as it is not wide enough for cars and lorries to pass and some drivers will not give way.

Car parking at the train station required and stops requirement to support developments further out - overflow of people from developments such as Wixams having to use Flitwick station. (This should have been addressed in Wixam development.)

Encouraging and incentivising cycling for commuting and pleasure will address many issues with congestion, parking, pollution, healthcare and social wellbeing and cohesion.

Roads are too narrow and wouldn't sustain additional traffic.

Roads too narrow and not suitable for more traffic.

I would like to see a cycle route between Amphill and Flitwick. Possibly crossing the A507 at the roundabout with Maulden Road/Flitwick Road.

Pavement between Amphill/Flitwick needs improvement.

Re-open Amphill train station. NO disabled facilities at Flitwick make it very difficult for me to travel to London which I need for my job. A new station with these facilities in Amphill are needed as soon as possible and would cut travel/traffic in Flitwick.

## Transport continued.

I don't see how bus can actually function within this dispersed rural area. While most people have cars and there are volunteering buses for elderly and disabled, I think well paved road will be sufficient.

Amphill High Street is very busy during the day. Limited free parking spaces mean cars sometimes park in dangerous places.

Flitwick train station is awful - dreadful parking environment, no access for wheelchair/pushchair/people with luggage, should be linked to the bus stop on the high street (a layby for the bus would help with traffic). Massive opportunity to improve. The first thing visitors to Flitwick (a lot with Center Parcs) see - helping Council generate more tax!

Parking for transport, e.g. trains, needs improvement to sustain the demand.

To encourage use of trains to discourage use of roads - including freight.

More buses might take some cars off the road. Flitwick is a commuter town.



## Jobs & Businesses

**Question:** With your chosen type of Business, please pin-point **one** specific place on the map table using your **lime sticker** where you think there is an opportunity. Please expand below on what you would like to see at this location:

Encourage small scale businesses to grow and develop. NO big corporations.

Regenerate the town centres. They are slowly dying due to too many restaurants, etc. Need to diversify.

We want to keep our towns thriving and to encourage people to use proper shops and not supermarkets.

Keep our town centre thriving - proper shops please.

There are no local opportunities apart from expanding Post Office.

More affordable business units would encourage businesses to locate in Amphill.

Keep improving the shops and businesses in Amphill - need to sort out parking so that people can access them. It could become a honey pot location.

More people are becoming self-employed and there is need to provide office space as more homes are built.

A proper High Street with a mixture of shops as an alternative to Tesco!

Post Office needs improving, need a local bank and ATM. All facilities seem to be based on car not pedestrian local access.

We need banks, larger doctors surgery and a Post Office with more than one assistant. Need car parking to support this. Infrastructure does not support increasing building in area.

Support for small shops/businesses on the High Street.

Bank in Amphill would be useful.

It's essential high streets in all towns and large villages are developed in a way to attract local residents and visitors to visit. This includes pubs/shops/restaurants/stores, etc. with a good mix.

Millbrook Technology Park ('test-track' site) - with links to Cranfield University and Flitwick railway station.

A decent Italian restaurant. More boutique shops.

Affordable start up in the centre of towns.

Improve shopping facilities in local towns, not shopping parks.

Create new industrial park and make Station Road industrial area a proper business park.

Further expansion of Amphill Business Park by removing the industrial park to a more suitable location.

With the retail parks/Milton Keynes and Bedford shopping centres, Amphill and Flitwick could support more localised and specialist retail units.

Lack of retail units. I am keen to open a play café for under 5's but there is nothing suitable in the area of Flitwick that is sizeable and accessible and with parking.

Lack of focal point in Flitwick, e.g. town square.

More local amenities.

With changing patterns of employment and extra people - start up businesses will be important. Amphill is an attractive location.

Shops in centre of town. Loss of Nat West is unhelpful and will be unhelpful for shops and industry.

Keep shops in town centre. Don't let them shut Nat West Amphill.

Some encouragement 'financial/rates help, etc.' is needed to entice people to develop the High Street.

Greater variety of shops that support local community but affordable rates for businesses whatever their length of trading.

Local retail units need to be improved plus some industrial outlets to provide more jobs.

More industrial outlets to improve more jobs.

Flitwick has little heart - the high street development is well overdue and very important for community cohesion.

Retail units in an area between Amphill/Flitwick would cut out need to travel to the adjacent larger towns.

## However, unacceptable use of language has been omitted.

With less entrepreneurialism, and fewer start-ups in CBC it is important to provide a place where people can start-up a business in a safe, supported area. This will be away from town centres (already too congested) - but there is no room in/surrounding Ampthill for such development.	Reduce charity shops.	Improved free parking will improve the businesses we have.
High Street and opposite Tesco. The units are there, plus the footfall, but for whatever reason there is not the attraction for retailers - presumably Tesco's presence kills off all development. Conversely Ampthill has Waitrose, and seems to have a thriving town - so maybe look there and ask what lessons can be learned.	Encourage small local niche businesses to regenerate the town centre.	Given the great train link Flitwick has, a proper development of the town centre is long overdue and a huge opportunity to improve the environment for existing residents and attract new residents.
Flitwick still has a haphazard appearance. Street furniture and "greening" should help to soften it.	I am against bringing extra industrial areas into Central Beds.	Encouraging more small shops into Ampthill centre - restriction on rent rises.
Flitwick station.	Small scale/sympathetic and 'green'.	
Since losing the Station Road start-up offices to more housing, there are now no/few facilities for small start-up businesses to operate from.	Supporting local business by making units available to locals.	
Not encouraging to see empty shops in small market town.	These are needed near towns in all locations.	
As wide a variety of outlets as possible - not just hairdressers and charity shops.	Why not add to industrial area of Flitwick going from SSSI Flitwick Moor, west to existing one, by the graveyard.	
Small incubator start-ups based on innovation.	In Flitwick - maybe a non-Indian restaurant?	
Local businesses - banks!	Flitwick - not sure where, but at the moment dominated by one shop - Tesco.	
Rents are too high and traffic congestion is putting people off visiting. Try getting in/out of Waitrose car park.	Improve the centre of Flitwick. Increase entertainment services near the train services. Flitwick has been engulfed by takeaways and estate agents. Diversity of businesses will increase popularity of our town and offer further jobs.	
More shops, less estate agents. The High Street is the centre of Flitwick after all.	Keep developing Ampthill's amenities as the local shops are already under huge pressure. More development locally will be needed.	
Multi-storey car park at station.	The centre of Ampthill could do with some more useful shops, a greengrocers.	
Better internet to start-up centres.	Small start-ups focussing on a theme of progressive and inclusive social values. Leave the world a better place than we found it.	
As a small business owner, I'd like to see more locations for meetings and networking at a low cost.	I would like to see small, affordable, artisan units available for small businesses to buy or rent, e.g. 1/2 man businesses.	
Good for our own business based in Ampthill.	Lack of local retail units Flitwick town centre.	
Ampthill High Street has great character and potential but is in danger of becoming rundown. Also traffic congestion is an issue.	Support should be given to ensure that all available premises in Ampthill town centre are full, which will benefit everyone.	
	It's not very clear to me - that how does Central Beds help local and support SMEs. The coming closure of Nat West Bank. It's going to influence the local businesses, especially Ampthill - labelled as a market town.	



## Environment

**Question:** With your chosen type of environmental issue, please pin-point **one** specific place on the map table using your **green** sticker where you think there is an opportunity. Please expand below on what you would like to see at this location:

Amphill is under review for toxins in the air caused by queuing traffic.

We need acceptable levels of air pollution in Amphill. See front page.

Renewable energy is important but not incineration due to pollution issues.

The air we breath must NOT be polluted, with Covanta!!! Probably coming what chance is there of clean air? Cars, buses. Air in Amphill, Dunstable Street and Bedford above high levels that it should be.

Marston Vale is a valuable recreation/ health environment for towns and the growing population. It is a new community forest developing from old industrialisation which scarred landscape. Industry is NOT appropriate here any more.

Solar panels/farm.

For a big development there will be a lot more car fume pollution. Also it is important to keep open space and wildlife habitats.

Site NLP390 is green belt and should not be built on.

Don't merge Amphill with Maulden/ Flitwick. Protect open space for this generation and the future.

Keep the green belt between the towns and stop them from merging. Maintain the small town and village aspect.

Reduce air pollution in town by improving parking and traffic flow. Pedestrianise main town centre (Amphill) or ban parking which impedes traffic flow.

Keeping the green areas in the centre of Amphill free from development. They are the lung of Amphill. We have to try and combat the increasing problem of air pollution in the centre of Amphill.

People need to be encouraged to recycle and have renewable energy.

To ensure that Flitwick Wood remains or is maintained as is important part of the town.

More cars, more pollution - waste disposal poor now. NLP390 site.

Flood risk at NLP390 site. This also affects Maulden and they have no facilities so more people will use Amphill's meagre facilities.

Preserve the open spaces we have now.

Protect the wildlife that is already present at this site. Increased building means more cars, more pollution, health problems.

Keep the green belt we have already. It's high quality agricultural land at the moment.

Highways England - M1 motorway noise following widening/hard shoulder running/smart motorway. Need for noise abatement! Earth bunds, noise barriers, etc.

All new houses should be sustainable.

Maintain the existing green spaces/ green belt between Amphill and Flitwick and also that surrounding both towns, to maintain the separation between settlements.

The increased traffic on Froghall Road and Steppingley Road.

Renewable energy is important but not incineration due to pollution (air and noise).

Minimise pollution from sites like Amphill scrap in Station Road, Amphill. (This type of site is usually much further from domestic housing in other areas.)

Monitoring of noise and air pollution levels from Amphill Industrial area particularly concentrating on heavy industry, e.g. Amphill Scrap Co. to hopefully lead to measures to reduce noise and air pollution in areas such as Coopers Hill, Amphill.

All of the choices could have been my first choice. However, there is a real and significant issue with air pollution. Traffic is the largest issue facing us.

Centre of Flitwick standing traffic causing terrible pollution around the two roundabouts in Flitwick town centre.

Risk to habitat as we reduce the "unbuilt" environment.

High quality agricultural land preserved. Settlement separation area between Amphill and Maulden preserved.

Maintain gaps between towns (Maulden/Amphill for example).

Protect open space and wildlife habitats. ALP053/NLP390 offers suitable habitat for rare birds and mammals.

Natural habitats for animals and birds.

Amphill town centre badly needs less traffic - for many reasons including air pollution.

Protect open space and wildlife habitats. Area ALP053/NLP390 proposed for development offers habitat for wildlife and birds in at-risk numbers.

Restrict further development to only one side of Steppingley Road.

Reduce traffic in Flitwick town centre.

Air pollution remains to be reported on by Central Beds Council.

Protect and encourage wildlife.

Must keep green space between the towns.

Activities and resources to create involvement and use. Encourage learning.

Large housing estates other than what we already have would be a disaster for local movement plus schools and healthcare.

Plenty of open space for all kinds of wildlife.

With increased housing the 'green belt' around Flitwick is under pressure. Along with habitats. For example, Manor Park needs protecting.

Would like fields between Maulden Road and Flitwick Moor NOT TO BE USED FOR RESIDENTIAL DEVELOPMENT because this would threaten the habitat of the SSSI.

Traffic congestion in centre of Amphill is getting worse due to the increase of the gridlocking. Air pollution is above the recommended level. Also concerned about the proposed incinerator planned for Millbrook old brick pits.



## However, unacceptable use of language has been omitted.

There is an opportunity for open space/wildlife habitats to be maintained in the greenfield area on the boundary between Ampthill and Maulden. There are footpaths/green verges/copses/water channels all containing much important wildlife habitats and contributing to vital open space.

Valued open space for walking, not surrounded by development.

Incentivise zero emission vehicles in towns with accessible and reliable electricity pumps and charge vehicle emissions via a parking or access charge like London. Also support cycling and walking in towns.

Steppingley - Peakes End - habitat including barn owls/red kites/newts/deer/partridges/bats.

All public buildings should have solar panels, unless there are architectural/aesthetic objections.

Also light pollution.

It is critical to maintain our open spaces not only for wildlife but for the health benefits this environment has been proven to generate.

Alongside the John Bunyan Trail up to Flitwick Wood.

We need to protect the reducing number of wildlife habitats.

New housing development cause noise and pollution.

Protect the space which is the home to tawny owls.

Valued open space!! Especially opposite a development site!

Expand Flitwick Wood.

Too much pollution in Ampthill town already.

The most important of all issues. Take the development down Gas House Lane. What consideration was given to wildlife, especially the owls which used to nest there? I thought they were protected.

Multifunctional green infrastructure between villages.

Green infrastructure between and through towns and villages.

Ampthill Park is a gem and must be protected.

Keep as many open spaces as possible. Too many cars giving out pollution when many more houses are built.

Our wildlife is important and is being disrupted by housing developments.

Air quality in centre of Ampthill improvement by keeping traffic moving.

Make sure the public footpaths are available and not through natural areas that become developed.

I would like to see this remain open as a wildlife corridor between Ampthill and Maulden.

Flitwick Wood should be protected and cared for. It is used by locals but sadly is very neglected. Wildlife, particularly deer, are not being protected.

All options are important but I could only select one.

No more building in Ampthill for 10 years give wildlife chance to recover from all the land lost to the huge building sites between Abbey Lane and Redbourne School.

We really value the local wildlife around here.

We love the local wildlife and enjoy it everyday.

2 years ago representatives from CBC spoke about reducing pollution from heavy traffic in Ampthill Town Centre by redirecting lorries, etc. away from these roads. Nothing has been done about this to my knowledge.

Is part of a natural habitat corridor along greensand ridge. Only farm left in Ampthill where 100s footpath walkers use. Best views in/of Ampthill. Keep Ampthill RURAL - it is good for all our needs!!

No development in this area - lots of little owls, buzzards, red kites, etc.

There are a few, privately owned and council owned fields in Steppingley that are not farmed and would make wildlife habitats.

Housing density is increasing and driving out much of the wildlife I used to see. Let's preserve wildlife areas to ensure we don't lose more.

Green belt land should not be built on. The site at Hill Farm ALP053 and NLP390 is an area of wildlife and open space. Building here would merge Maulden and Ampthill, local infrastructure would not cope. Many birds and wildlife habitats would be ruined.

Left alone to nature.

Leave as much countryside in and around Ampthill and surrounding villages.

We need to protect our green open spaces as we are destroying wildlife which can lead to extinction. The more traffic the more pollution.

Protection of the environment to support wildlife, nature and protect health.

Steppingley is a village in a conservation area which must be protected from pollutants for the benefit of residents, inhabiting wildlife and the many visitors.

This could be classified as a SSSI. Rare plants, springs, wildlife, flowers, birds. It also forms part of a corridor for wildlife along the greensand ridge.

Green belt land should not be built on. ALP053 and NCP390. This land is needed for local habitats and for recreational exercise which is necessary to maintain a healthy community. Dog walking, running route. Fresh air.

By open space - I don't just refer to parks, but keep the green belt and the farmland.

We love having open spaces/countryside around us.

Traffic build up in Flitwick town centre can really build up and is noticeable when I walk my son to nursery. A bypass of Flitwick would help with this.

No houses being built by Bloor is what I would like to see! Open spaces for wildlife and for people to walk, picnic and enjoy in safety and peace.

Building is destroying habitats and there is far less wildlife around.

Lack of open space - this is disappearing due to massive amounts of housing developments.

## Homes

**Question:** With your chosen type of Home, please pin-point **one** specific place on the map table using your **purple sticker** where you think there is an opportunity. Please expand below on what you would like to see at this location:



People who work locally can't afford to live here.

There are already some homes for the elderly being planned. There should be NO MORE HOUSES in Ampthill or Flitwick.

The population of the area is ageing. I would increase family homes available.

NO ROOM IN AMPTHILL FOR ANY MORE HOMES.

NO ROOM IN AMPTHILL FOR MORE HOUSING DEVELOPMENT!!

We are full up with no infrastructure to support expansion.

NO MORE REQUIRED IN FLITWICK OR AMPTHILL (INCLUDING MAULDEN).

For young people can get a foot on the property ladder/or to rent. It is unfortunate that bungalows are on the above property list as these aren't easily available in Ampthill. These are particularly important for older people or disabled.

Build good quality and affordable 1 and 2 bed starter homes for young people to buy and rent.

One/two bedroom properties so people can get on the ladder. However, they have to be affordable which in the current climate is unlikely. There needs to be better infrastructure.

Older generation will be needing more care. Need to build any new homes as near the railway as possible to allow access to M1 and railway station.

We are full up. Think about the infrastructure before you act.

Need more downsizing homes for ageing population in Ampthill.

It's essential to create a good housing mix to provide adequate numbers of smaller properties for 55+ age group to downsize and free up larger family houses.

"One-o-One" site next to Shell filling station, Flitwick. Other suitable local sites - Froghall Fields?

Good sized family homes but not the new type builds which are awful. An incentive to improve older family homes which are better built.

Need more starter homes for first time buyers. Unaffordable to buy as first time buyer in Ampthill/Flitwick preference for local links. Release Council land for self-build.

There is little opportunity in Ampthill for the older generation to downsize and remain in the town.

People are being priced out in the new developments.

There is no room for development in Ampthill.

Shortage of houses for downsizers (in pleasant and central location).

There are more people living on their own or staying with parents. Provision of single living accommodation will have a knock on effect on other housing developments (positive). There is a need to reduce traffic in Ampthill town centre.

No more houses.

Regenerate current housing stock to offer extra care for elderly especially those with dementia. Why was the nursing home not built on site of Russell House in Ampthill?

Ampthill has a serious shortage of single storey "downsize" homes - which could free up larger homes for young families.

Improve/increase supported housing and extra care especially for those with dementia.

New starter and family homes.

Land by one O one. We need affordable homes for our children, also social housing.

Homes that young people can afford.

Development like the proposed change at the old Police Station is needed.

Houses that are affordable for families and people that have grown up in the area rather than people coming out of London.

Affordable and starter homes are needed for young people especially those on minimum rates. Currently houses under construction are grossly overpriced obviously aimed at Londoners moving out.

Help for all ages including the young ones just starting out - at affordable prices.

Cost of housing in Flitwick continues to increase, any new developments must include a higher proportion of affordable housing than is currently the case.

Low cost homes for people on minimum wage to provide work force within our locality.

Where each planning approval is granted for large scale new housing therefore 50 homes or more a greater number of starter homes should be included to help local young people and young families a chance to buy.

No housing required - too much new housing already in development! No more new housing is required/or can be serviced within the Ampthill area.

Specialist housing with care/support for older people and other vulnerable populations. Dispersed within housing growth.

Flitwick/Ampthill and surrounding areas are all well provided for. See comments re: Transport overleaf.

Every development should have some reasonably-priced, smaller homes included.

The new building we have I understand will accommodate this.

Make sure infrastructure in place before building more homes.

Very limited availability of homes for people who wish to downsize.

If more people were able to downsize there would be more family homes.

The Old Police Station needs to be made housing for older generation.

Ampthill and Flitwick developments are not affordable for new home buyers forcing young people out of the local community and encouraging people to relocate from London - who use Thameslink and contribute little to the local area.

No homes until infrastructure is in place (schools, GP, etc.).

No more houses.

We are over congested and no new homes should be built!

## However, unacceptable use of language has been omitted.

We have enough houses ... Ampthill town is gridlocked on a Saturday.

More sheltered accommodation for the elderly with a warden on site.

Not sufficient semi-type houses that are affordable.

Cannot find semis in Ampthill - well only some. Houses in Ampthill are becoming unaffordable to many.

Lack of affordable housing for single people of any age.

More people are single and need to have their own place.

More homes or community living.

More homes or community development.

Reinstate protected accommodation at St Georges, Dunstable Street, Ampthill.

Affordable homes for first time buyers.

There are too many new housing developments with family homes. By building for the older generation you will free up existing family homes in the area.

None - Ampthill has enough already and unable to support more as infrastructure already broken.

With the cost of housing rising it is becoming more difficult for first time buyers to purchase a house.

Too many houses in Ampthill for the infrastructure - spoil what you have - too congested as it is.

Don't know - so many new houses around without suitable healthcare, schools and transport.

Scheme needed so that locals can afford to stay locally.

The new homes in Flitwick that are being built are not affordable. I feel that any building land that may become available in the future should address the need for affordability not developer's profit. Perhaps a scheme whereby local people only are allowed to buy?

No more homes in Steppingley!

Too many larger properties at over inflated prices are in Flitwick. Like most parents, I am concerned that my children will not be able to afford to live in Flitwick as they grow up. Let's build or offer affordable or subsidised homes.

No more.

Whenever new homes are built, there is very rarely affordable homes for local youngsters or older people to downsize it is large houses.

This is already being addressed by the current sites identified and being built on. This provides opportunity for family homes.

This need is already being addressed by Steppingley Gardens.

None. I don't believe Ampthill needs any further development.

Lack of housing for downsizing/ bungalow/2 bedroom accommodation.

There has been a significant amount of development in Ampthill in the last 5 years. Brown field sites should be used for any future development in Central Bedfordshire NOT green belt.

Too many new developments is destroying the place. If local authority wants to make Ampthill/Central Beds, it really requires deep thought, such as keeping green areas (as stated it's important to ensure quality of local lives), as well as planning the infrastructure that will be about to support the exponential growth of the town. In recent petition, government has responded that Green Belt should be kept, and the government is not setting quotas for local authorities to build houses. Please also be aware that, despite increasing new build means income for Council, but it also means more expenditure!

None. I feel our green belt is slowly disappearing.

I recognise the need to build more of all the above. A redevelopment of Flitwick centre would enable this without expanding the town limits into existing countryside which is also important to maintain.

Social housing for single people, young family and the elderly. NOT big 5 bed homes that start at £400,000. Social housing with affordable and realistic rents.

Not so many cloned housing developments, build unique homes with character that fit into surroundings.

There has been a massive amount of housing development recently, taking away the character of the area. No more is required.

More older generation homes needed but also Council property not affordable homes. Affordable homes are not affordable for young families.





## Growth & Infrastructure

**Question:** With your chosen type of Infrastructure, please pin-point **one** specific place on the map table using your **orange sticker** where you think there is an opportunity. Please expand below on what you would like to see at this location:

Improve infrastructure to take housing volumes - investment!

The area around the health facility in Ampthill is adequate but parking appalling.

More parking at Doctors Surgery. With many more houses being built in Ampthill things will only get worse, causing more problems.

Whereas healthcare is adequate, associated necessary parking is dreadful. It could be easily sorted with a re-thinking of the available space asap! Oliver Street and side roads blocked with cars visiting Houghton Close.

Doctors Surgery with sensible parking bays.

Ampthill will shortly not have a bank - with increases in housing I think one or two are needed.

Doctors are not coping.

More local healthcare and clinics are required to provide for the growing population.

There is a need for local healthcare and clinics to accommodate growing population.

Community hubs for different stages of life. Small children fairly well catered for, teenagers not so much. Elderly care reasonable.

Bedford Hospital is struggling and, with the increase in population, need more local medical facilities such as a Walk In Centre.

The growing population require more schools, surgeries and community facilities. These should be built before the houses.

There needs to be a High Street shopping area and an edge of town competitor to Tesco and Waitrose.

Doctors congested, long delays for appointments at present, e.g. 4 weeks for a blood test. Broadband poor. Lack of G3 and G4 in some areas, e.g. Coppins, let alone G5.

We need more doctors and banks.

Increased healthcare for people already here - cannot cope now with demand. Provide a travelling bank to Ampthill/Maulden.

With growing population (as you keep building in this area) there is a lack of medical facilities able to cope.

With more houses being built we will need more of all of the above.

All aspects of the infrastructure need to be improved before more housing growth.

Additional surgery to serve Flitwick. New house-building in Flitwick and surrounding villages overwhelming current Highlands Surgery! Potential "closure" of surgery to new/additional patients.

With extra homes being built, the doctors surgery is very difficult to get an appointment and this will become more of an issue. We need at least another doctor surgery.

Build new medical centre, possibly combined services to serve Ampthill and Flitwick - purpose built - more services - enough car parking - relieve pressures on hospitals.

At present population, I suspect that all of the above are relatively satisfied. However, with any further building in Ampthill I would think that all will need to be improved to some extent.

The current facilities are not sufficient for the expanding Froghall Field and Ampthill Chase development. We are struggling to get our children into pre-schools.

We are well serviced but park needs to be sorted at the health centre in Ampthill.

A walk in facility at Steppingley could help cater for the increased demand from the new housing developments now being built.

Difficult to obtain doctors appointments in Ampthill and Flitwick - particularly for elderly who do not have access to the internet. Also a walk in centre in the Ampthill/Flitwick area would be appreciated.

Our doctors are becoming overloaded.

Critical. The availability of all healthcare is becoming a major issue, with access to doctors, etc. being difficult.

Park behind railway line is in need of updating and is aimed at under 5's but very little of it is working and is very tatty. Off Beaumont Road.

pressure on existing schools with many new homes, should be addressed.

At the moment no issues - in future healthcare, schools, sewers, parking.

Ampthill doctors parking massive problem.

Many foul water pipes in local area remain unadopted and therefore not maintained - increase risk subsidence and flooding.

Doctors surgeries in Ampthill are very congested - parking and appointments are unavailable. The Ampthill Scout's hut is the only youth facility - it needs enlarging and modernising to meet increased demand.

Doctors surgeries in Ampthill are very congested - parking and appointments are unavailable. The Ampthill Scout's hut is the only youth facility - it needs enlarging and modernising to meet increased demand.

We need better access to out of hours/urgent care in Central Beds. Distance to travel to Bedford/Luton is too far.

Use Steppingley Hospital as an additional Health Centre.

Steppingley Hospital use as additional health centre/doctors.

More health/doctors needed.

Town expand more doctors required.

We need more health care buildings - Abbey Road area would be ok.

Better parking at healthcare facilities for people that need to travel. More healthcare facilities to support new housing and professionals.



## However, unacceptable use of language has been omitted.

Flitwick now has a new leisure centre replacing the existing one whereas Ampthill does not have one at all. A new one could be built near Ampthill Park.

More resources in the healthcare in Ampthill and much more parking areas at all times.

The surgery at Flitwick needs to be expanded or a second surgery built to cope with growing population.

Our increasing elderly population and increasing under 16s population are high users of healthcare - we need more GPs and Practice Nurses and new surgery - ? At Steppingley Hospital.

Additional healthcare buildings and the relevant services and staff required in Ampthill and Flitwick with parking provisions provided, ideally on a bus route.

Schools are now full and will not support the current development in Ampthill area. A new school may be required perhaps in brownfield area.

There appears to be massive pressure on GP practices - more capacity in new centres please, e.g. Flitwick as a priority.

Schools and healthcare - Given potential growth/expansion. Cannot have one without the other.

Local provision for surgeries and for schools is already over-stretched.

The highlands surgery is practically impossible to access, both in terms of parking and doctors appointments. If you insist on reducing open spaces and increasing populous in limited spaces the result will be more requirement for expensive healthcare.

Flitwick is expanding with at least 550 new homes being built. It is a major problem to get an appointment at the present GP surgery so expansion is required before all the new homes are occupied.

Current services are unable to cope.

With more houses we need more health centres and schools.

Needs to be made more accessible for parking, for people unable to walk.

Depending on the number of new homes and where they are built - Ampthill schools would need help to cope with increased numbers.

Need more healthcare facilities - infrastructure will fail otherwise!

Flitwick surgery cannot cope and needs to be improved.

Flitwick surgery needs to be improved - it cannot cope.

Improve GP facilities to cope with new developments.

The electricity system is at breaking point and will only get worse.

Ensure there is enough utilities to support proposed housing, etc.

Another surgery. Our surgery is struggling to cope now - what will it be like when all the new houses are built??

Bigger surgery and more parking available.

NHS doctor. Not enough of any services for population (growth).

Not enough services - can't get a doctors appointment anymore - because too many houses. Same comment for pressure on all services.

Waiting times of the surgery.

Facilities for doctors when up to 500 houses are being built now!!

Doctors surgeries are stretched beyond belief - more surgeries need to be built in line with population growth.

Surgeries unable to cope!

Particularly younger people.

More facilities for leisure.

Flitwick leisure centre is a great facility but too small. Already over subscribed. For example 10 month waiting list for swimming lessons.

Expand facilities at Steppingley Hospital, e.g. short term stay or day treatment centre.

Better access and parking. NHS owned roads in vicinity of health centre.

Too many new homes putting strain on local healthcare.

Extra sports facilities should be developed near Flitwick Cricket Club.

Expanding healthcare facilities, more parking required

None

Would like school places to be available without the new development putting too much pressure on existing schools.

Would like school places to be available for local people - concern that new development will put too much pressure on existing schools.

Our doctors surgeries and hospital are struggling to cope with the increase in the local population. Recently a large new development is being built in Ampthill but no extra provision is planned for healthcare.

Don't know.

Gas line is adjacent to Steppingley village yet not available to residents. Improved broadband speed would enable working from home and so fewer car/train journeys.

Gas in Steppingley.

Increased school places. So many new houses but no places for the children. Where will the places go? Is there room to expand our existing schools. Do we need a new school to the north?

More retail would be needed to support more houses.

Doctors in Ampthill impossible to park!! Surgery needs to relocate.

(Retail centre)

We could do with some retail outlets, slightly out of the centre.

Healthcare provision is already overstretched in the local area. The already planned/builds in development will further increase the pressure on healthcare provision in the area, including doctors, dentists.

Secular should be prioritised owing to a desperate need for this standard of education.

With the developments already underway in Ampthill. Doctors will be oversubscribed already.

## **Growth & Infrastructure continued.**

We do not have enough infrastructure, doctors/schools to support the houses built.

GP surgeries concentrated in ONE area Ampthill ONE in Flitwick making access difficult.

Help local business to keep Ampthill high street full of shops.

This should correspond to "Homes"  
- recent gas outage (last Nov) really suggested the local area has electricity supply related issue. With so many developments, how would the current infrastructure cope with the demand? As well as hospitals (I need to book a place at least a month ahead to see my GP) and the parking around the town.

I feel the doctors and dentists in the area are very busy already.

See also comment on Jobs and Business - Flitwick town centre and the wider area would benefit enormously from a sensible redevelopment of the station and existing retail units. The town could easily support more shops and restaurants.

More family-friendly community centres. Children's play areas. Centres for elderly to go and socialise.

Schools are over-crowded due to over-development. The infrastructure cannot cope.

Even though I ticked healthcare, schools are also needed in my area.



population  
centre built  
parking surgeries houses  
health appointment Hospital area  
doctor  
**Ampthill**  
healthcare  
surgery  
facilities school  
home local services Flitwick  
development

# Appendix - Supplementary Questions on Feedback Form

## Thank you for responding to this consultation.

Your views will help us to shape the Community Plan that will inform the Local Plan, influence development decisions and help direct investment where it is needed. There will also be other opportunities to comment on the Local Plan as it is developed. There will be an opportunity to express your views in more detail at the next stage.

### Please answer the following questions:

Gender: ☐ Male ☐ Female Age range: ☐ Under 18 ☐ 18-25 ☐ 26-35 ☐ 36-45 ☐ 46-64 ☐ 65+

What postcode do you live at? \_\_\_\_\_

Which town/village do you shop at most often? \_\_\_\_\_

☐ I am a local resident ☐ I am a Town or Parish Councillor for \_\_\_\_\_

☐ I am an organisation representative please state \_\_\_\_\_

Which town/village do you work in (if applicable)? \_\_\_\_\_

Do you consider yourself to be disabled? ☐ Yes ☐ No

To which of these groups do you consider you belong? ☐ White British ☐ Black or Black British  
☐ Asian or Asian British ☐ Mixed ☐ Chinese ☐ Other Ethnic group (please write in) \_\_\_\_\_

### Would you like to be informed of the arrival of the Consultation Draft of the Community Plan for your area? We can notify you of its publication.

Be assured that your personal details will not be published in any report or passed to a third party.

By ☐ post or ☐ email

Name: \_\_\_\_\_

Address \_\_\_\_\_

Email: \_\_\_\_\_

☐ Please tick if you would like to be kept informed of Local Plan Updates.

After completing this feedback form please place in box at front door.

Or post back to us at Local Plans, Priory House, Monks Walk, Chicksands, Shefford, Bedfordshire SG17 5TQ

**Data Protection Act 1998** Please note that your personal details supplied on this form will be held and/or computerised by Central Bedfordshire Council for the purpose of the Local Plan. The information collected may be disclosed to officers and members of the Council and its' partners involved in this consultation. Summarised information from the forms may be published, but no individual details will be disclosed under these circumstances. **Your personal details will be safeguarded and will not be divulged to any other individuals or organisations for any other purposes.**

Sign up for email updates ...

 [www.centralbedfordshire.gov.uk/localplanupdates](http://www.centralbedfordshire.gov.uk/localplanupdates)

More information on the Local Plan can be found here...

 [www.centralbedfordshire.gov.uk/localplan](http://www.centralbedfordshire.gov.uk/localplan)

# Appendix – Supplementary Questions Summary

Public Consultation Flitwick Attendees Record					
Response	Gender	Age	Res/Cllr/Org	Disabled?	Ethnic Group
Response	Male: 52 (41.6%)	Under18: 1 (0.8%)	Resident: 123 (96.1%)	Disabled-Y: 6 (4.7%)	White British: 125 (97.7%)
	Female: 73 (58.4%)	18-25: 0 (0.0%)	Councillor: 20 (15.6%)	Disabled-N: 123 (4.7%)	Black or Black British: 0 (0.0%)
	Unknown: 0 (0.0%)	26-35: 8 (6.4%)	Organisation: 5 (3.9%)		Asian or Asian British: 1 (0.8%)
		36-45: 18 (14.4%)			Mixed: 0 (0.0%)
		46-64: 51 (40.8%)			Chinese: 1 (0.8%)
		65+: 47 (37.6%)			Other Ethnic Group: 1 (0.8%)
Nothing Recorded	19	19	16	15	16
Total	144	144	144	144	144

Homes

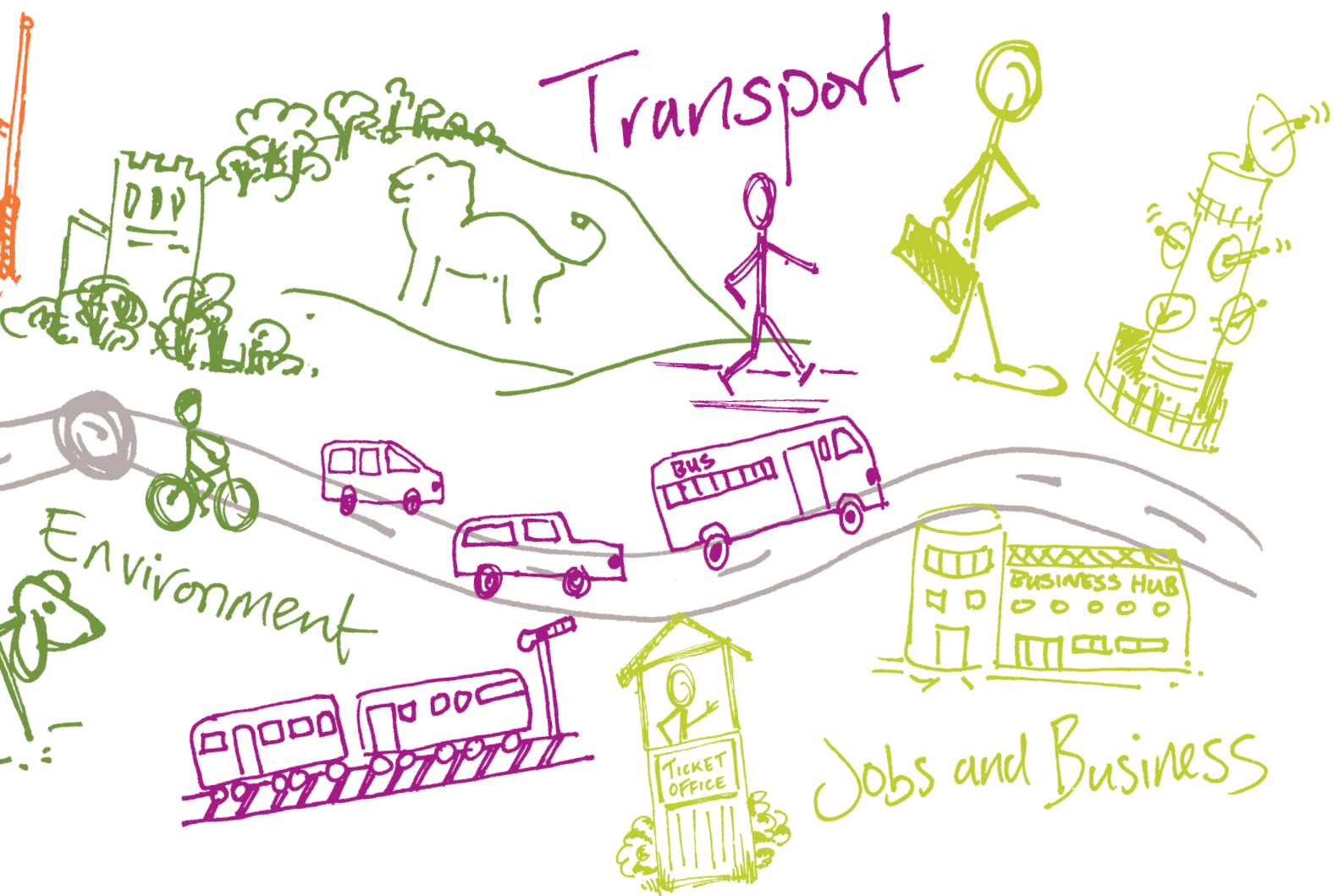


Growth & Infrastructure



Local character

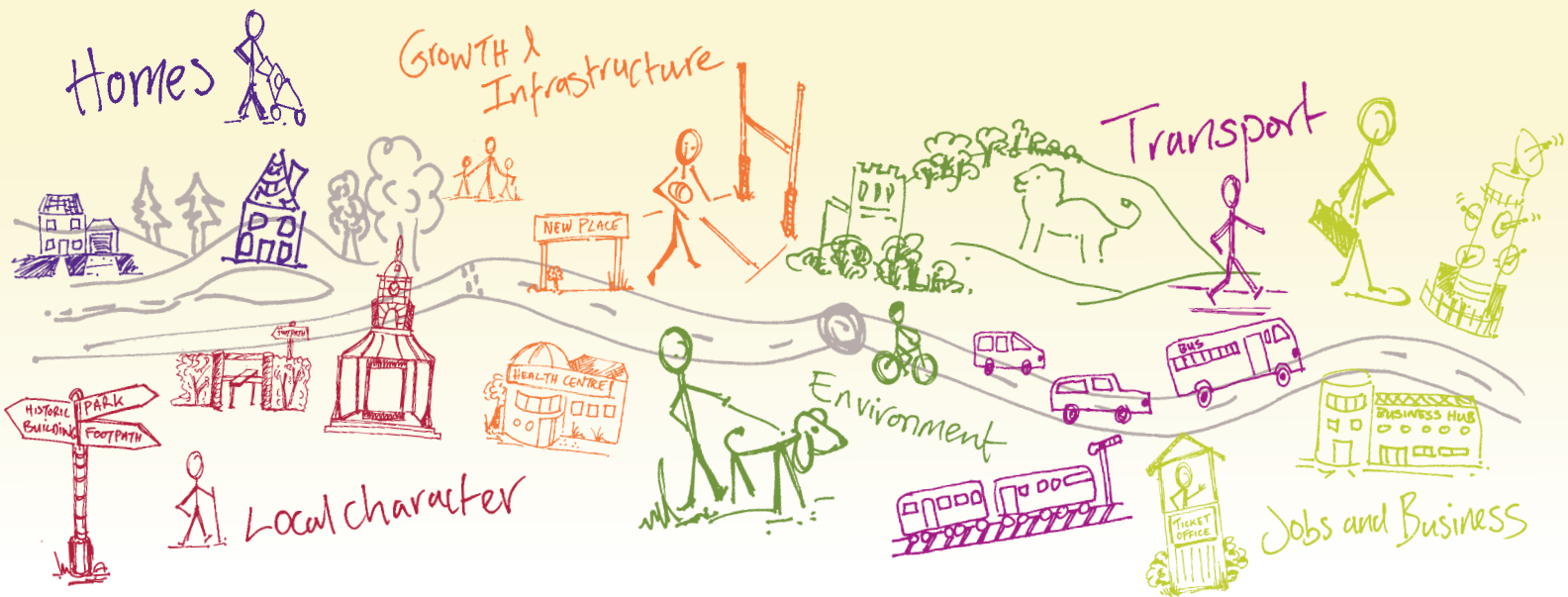
**A great place to live and work.**



**Central  
Bedfordshire**



# Shaping where you live 2035



## What happens next?

Community Planning is a continuing process and this Community Plan, which collates all the information gathered at the event, is the first time this type of information has been collected. There will be a series of actions arising from the Community Plan which are likely to influence or shape planning policy in the Local Plan, decisions on planning applications, and decisions on where money arising from development should be spent. These actions are identified in total within the 'Overview Statement of Community Planning' which details how they will be dealt with. Central Bedfordshire Council will seek to work in partnership with organisations including Town and Parish Councils, developers and other agencies to deliver on these actions.

## For more info on community planning ...

 [www.centralbedfordshire.gov.uk/community-planning](http://www.centralbedfordshire.gov.uk/community-planning)

## More information on the Local Plan can be found here...

 [www.centralbedfordshire.gov.uk/localplan](http://www.centralbedfordshire.gov.uk/localplan)

**Disclaimer** Central Bedfordshire Council is the statutory Planning Authority for the area and therefore is bound by legislation and must have regard to government guidance on planning matters.

Community Plan produced in consultation with Central Bedfordshire Council supported by [www.lda-design.co.uk](http://www.lda-design.co.uk)

### This document contains:

Contains OS data © Crown copyright and database right 2016  
Contains Royal Mail data © Royal Mail copyright and Database right 2016  
Contains National Statistics data © Crown copyright and database right 2016

Central Bedfordshire Council:  
© Crown Copyright and database right. 2016 Ordnance Survey 100049029

**Central  
Bedfordshire**

## A great place to live and work.