

Appendix

Community Plan

Covering the parishes of Barton-Le-Clay,
Flitton and Greenfield, Gravenhurst,
Pulloxhill, Shillington, Silsoe,
and Streatley

Community Area 13

This Community Says...



Appendix -Feedback Form

Local character

What we have we love. Our history, countryside and communities. We need to build, with care to enhance what we have.

NO ISSUES

Please select **one** type of Local Character from the list below that you would most like to see protected or improvements made within your local area:

- A. Built Heritage (e.g. ancient monuments, old buildings, memorials)
- B. Landscape Heritage (e.g. historic parks, protected landscapes)
- C. Open space natural (e.g. countryside, nature reserves, viewpoints)
- D. Open space man-made (e.g. parks, common land, village green)
- E. No improvements

With your chosen type of Local Character, please pin-point **one** specific place on the map table using your **red** sticker where you think there is an opportunity. Please expand below on what you would like to see at this location:

Transport

How do we get around? With more of us on our cycleways, roads, rail. How do we improve & maintain our transport links?

NO ISSUES

Please select **one** mode of travel from the list below that you would most like to see improvements made within your local area:

- A. Vehicular
- B. Bus
- C. Train
- D. Cycle
- E. On foot

With your chosen type of Transport from above, please pin-point **one** specific place on the map table using your **pink** sticker where you think there is an opportunity. Please expand below on what you would like to see at this location:

Jobs and Business

Where will everyone work? Supporting local businesses to grow & attracting new business. We need to create jobs for all.

NO ISSUES

Please select **one** type of Business from the list below that you would most like to see investment in to improve business or jobs in your local area:

- A. Industrial parks
- B. Business parks
- C. High street development
- D. Local retail units
- E. Small-start-up office centres (innovation hubs)

With your chosen type of Business from above, please pin-point **one** specific place on the map table using your **lime sticker** where you think there is an opportunity. Please expand below on what you would like to see at this location:

Environment

**Our environment is important. It influences how & what we create.
We need quality development.**

NO ISSUES

Please select **one** of the Environment types from the list below that you consider the most valuable attribute to look after for the future within your local area:

- A. Renewable energy
- B. Pollution (Air)
- C. Pollution (Noise)
- D. Open Space - wildlife habitats
- E. Flood risk

With your chosen type of environmental issue from above, please pin-point **one** specific place on the map table using your **green** sticker where you think there is an opportunity. Please expand below on what you would like to see at this location:

Homes

Homes for every stage of life. A house is not a home until it's lived in. We all need a home we're proud of.

NO ISSUES

Please select **one** of the types of Homes from the list below that you consider are needed within your local area:

- A. Older generation (downsizing/sheltered)
- B. Single living (lifestyle/separation)
- C. New starter homes
- D. Family homes
- E. Affordable homes

With your chosen type of Home from above, please pin-point **one** specific place on the map table using your **purple sticker** where you think there is an opportunity. Please expand below on what you would like to see at this location:

Growth & Infrastructure

**Where to place homes & services. Supporting market towns, villages & new settlements.
We need to plan places to grow communities.**

NO ISSUES

Please select **one** Infrastructure facility from the list below that you consider is most needed in your local area:

- A. Healthcare
- B. Schools
- C. Retail
- D. Community Centres
- E. Leisure facility (leisure centre, play areas etc.)
- F. Utilities improvements (telecoms/electricity/gas/foul treatment)

With your chosen type of Infrastructure from above, please pin-point **one** specific place on the map table using your **orange sticker** where you think there is an opportunity. Please expand below on what you would like to see at this location:

Appendix - Feedback Form Summary

The following data for Community Area 6 was collected at the event held on Thursday 26th October 2016 at St. Nicholas' Church Hall, Barton-le-Clay from 2:30pm until 7:30pm using questions from the feedback form illustrated on the previous page.

Feedback Form Summary						
Response	What would you most like to see protected or improvements made?	Local Character	What would you most like to see improvements made in?	Transport	Would most like to see investment in to improve business or jobs?	Jobs & Business
No Response		6		5		17
A	Built Heritage (e.g. ancient monuments, old buildings, memorials)	6.25	Vehicular	16.5	Industrial parks	5
B	Landscape Heritage (e.g. historic parks, protected landscapes)	8.25	Bus	40	Business parks	12.5
C	Open space natural (e.g. countryside, nature reserves, viewpoints)	47.25	Train	2.5	High street development	11
D	Open space man-made (e.g. parks, common land, village green)	7.25	Cycle	8	Local retail units	7
E	No improvements	1	On foot	4	Small-start-up office centres (innovation hubs)	23.5
F	No F question on this theme	0	No F question on this theme	0	No F question on this theme	0
Nothing Recorded		7		7		7
Total		83		83		83

What do you consider the most valuable attribute to look after for the future?	Environment	Which you consider are needed the most?	Homes	Which you consider are needed the most?	Growth & Infrastructure
	2		6		8
Renewable energy	13	Older generation (downsizing/sheltered)	33	Healthcare	30
Pollution (Air)	2	Single living (lifestyle/separation)	3.5	Schools	7
Pollution (Noise)	7	New starter homes	9	Retail	1
Open Space - wildlife habitats	46.5	Family homes	6	Community Centres	7
Flood risk	5.5	Affordable homes	18.5	Leisure facility (leisure centre, play areas etc.)	12
No F question on this theme	0	No F question on this theme	0	Utilities improvements (telecoms/electricity/gas/foul treatment)	11
	7		7		7
	83		83		83

Note:

The public were instructed to only tick one category for each theme. Where an individual ticked more than one category, their choices are divided evenly across the categories.

Local Character

Question: With your chosen type of Local Character, please pin-point **one** specific place on the map table using your **red** sticker where you think there is an opportunity. Please expand below on what you would like to see at this location:

Registered as "important Green Space" to prevent development. People moved here because of our green fields.

Thomas's Meadow.

Would like buffer strips so that villages retain their character, e.g. Meppershall, Shillington to stop being swallowed by large towns Shefford, Stotfold, Luton, Silsoe

Preserve the green belt around Barton-Le-Clay an Area of Outstanding Natural Beauty

Must liaise with Wrest Park and agree any strategy with them. Any woodlands generated (Bloor) need preserving and nurturing.

Look after the green belt in Barton-Le-Clay and area. Barton Springs.

Birds and animals visit these fields where will they go if you build here? The fields to west of hospice.

We are fortunate in Barton to have lots of open natural space and I would like to see it left as now in its natural state.

Barton Springs/Hills and surrounding fields - leave entirely as they are.

Wrest Park and our 20K visitors a month need to be taken into consideration. Traffic/services.

Protection of wildlife especially skylarks and established rookeries.

Thomas's Meadow.

Protection of existing site.

One of the principal reasons people live in/move to Barton is because of the fact it is a village separated from the sprawl of Luton by beautiful countryside and nature reserves. This must be protected forever.

Keep green belt, green belt!

Stone walls/Victorian and earlier architecture provides character to living environment.

Conserve the current land use west of Silsoe village. There has been far too much development there recently. Access to the countryside is vital.

Flower gardens seating

Protect our green belt and countryside for future generations.

Protect our green belt.

Our open landscape areas kept open. Too much building on ancient meadows and destruction of medieval hedgerows - areas we can't replace.

Kept the same, no building on the rec.

Shillington is a delightful village, having its own character. Building houses in the middle of the village just makes the village like everywhere else, i.e. lacking in character.

Protect to walking over hills, etc.

Continued protection and conservation at nature reserve.

It is really important that even though we are a joint P.C. the gap between Flitton and Greenfield is maintained.

All of these are important for our small village. It is very important that the ambience of the villages is protected.

Country park.

Expand chalk downland eastwards from Barton Hills NNR, ultimately linking to Pegsdon, etc. to create landscape scale chalk grassland area.

Protect what we have.

Promotion of the worldwide links with Bunyans Pilgrims Progress its literary connections with our landscape (the delectable mountains) the opportunity this could offer for tourism.

The Barton Hills National Nature Reserve must be protected from any development.

Care taken to protect Barton Hills and Sharpenhow Clappers.

Greater parking and easier access in and out.

I would like to see nothing built on current open spaces as that is the threat from 'green field' development.

The open nature of the centre of Shillington should be preserved.

Expand Barton Conservation Area and protect more trees.

Wrest Park and environs.

Protection from development for open spaces and established viewpoints.

The village needs to develop.

Barton Watermill and surrounding

landscape/fields. The Watermill is a very rare "overshoot" that remains in the country. The surrounding field also contains a scheduled monument.

Open space with viewpoint overlooking Flit Valley, currently allotments/public footpath.

Barton Hills recreation ground no improvement required. Best left alone.

Preserve the area, better car parking, toilet facilities.

Don't want green spaces and open space to be invaded (i.e. built upon).

Too many modern builds/alterations beside listed buildings.

A halt to the gradual creep which is turning the "village" into a suburb.

No building on green fields.

No open spaces to be built on.



However, unacceptable use of language has been omitted.

Transport

Question: With your chosen type of Transport, please pin-point **one** specific place on the map table using your **pink** sticker where you think there is an opportunity. Please expand below on what you would like to see at this location:



Public transport is essential to cover the community needs. Please note Shillington is spread over several miles and covers a range of ends.

Bus transport links between small villages and shops/doctors/work are limited or irregular. Would like to see hopper buses for elderly or ill health or those who cannot drive, otherwise become isolated.

Only being able to visit Luton or Bedford (one bus an hour) is ridiculous for a village of over 5,000 inhabitants. If we had a better service at a feasible cost per journey, traffic would eventually reduce on our congested roads.

Traffic is a major issue in the High Street, paths need repairing and residents encouraged to use them.

Improve cycle tracks out of village to Barton and other surrounding villages.

Bus links between Barton-Le-Clay and Harlington Station. To help with parking issues at our local train stations.

We need more buses going to more areas (only to Luton or Bedford at present).

Bus links to Dunstable - Ampthill - better links to Hitchin/Shefford.

Traffic on the A6 is bad now. How will it cope with more from this new project?

Buses at more sensible times. Currently no bus between 8.00a.m. and 9.50a.m. then 2 (at once - the 81 and 79).

The bus service is very limited; especially for students attending college and workers trying to get to and from work within a reasonable time. A better local transport system would encourage leaving cars at home.

Confirmation of bus routes after consultation.

More attention paid to excess speed on roads approaching Barton.

I put a sticker on an ad hoc spot on a road - impossible to be specific.

East west route bus service say Leighton Buzzard - Hitchin including villages.

The north Luton bypass must be

built as this will help alleviate heavy rush hour traffic on the A6, as will substantially improved bus services running north-south on the A6. Buses connecting Barton with Hitchin on regular basis would be useful!

Cycle lanes built away from major roads. Many people have bicycles but do not use them because of safety fears.

There is no safe cycle link from Shillington to any adjoining village as a cyclist I would not let my teenage children cycle.

New road from Wrest Park to A6. Residential allocated parking at village hall and no parking at all through High Street bottleneck as it causes so much 'rat run' traffic at high speed through Church Road/Vicarage Road. Dangerous conflict between vehicles and pedestrians at the moment in both locations (and please get Wisams station built!).

Traffic 'calming' in Silsoe High Street has created a traffic movement and parking problem in adjacent roads. The centre of the village is very congested at rush hour times, esp with Wrest Park traffic, with the result that vehicles 'rat run' through adjacent roads to avoid it.

One way systems especially Manor Road.

For destinations on the bus service.

More bus routes from Barton.

We all drive as there is no bus service now. As we get ever older we would hope to have a service to get us to doctors in Lower Standon and twice a week shopping in Hitchin, and P/O in Shillington.

A continued bus service - without buses there will be more cars going through our villages - more cars equal more noise pollution, more air pollution, more speeding, more danger to pedestrians, more damage to environment.

Better surface of path plus wider path in old road with path lighting.

There are buses in Shillington but not spread well throughout the ...

Traffic calming in Sharpenhoe Road i.e. speed humps.

Bus to Harlington Station.

Bus service from Barton to Harlington Station.

Parking on the village centre.

More control of speeding through villages. Stopping HGVs exceeding weight limit through villages.

We all drive as there is no bus service now. As we get ever older we would hope to have a service to get us to doctors in Lower Standon and twice a week shopping in Hitchin, and P/O in Shillington.

Parking on narrow busy roads are a big problem in our village.

When unable to drive not a great service via public transport

Bus service to Harlington and Hitchin.

Silsoe has very specific travel needs. The Wrest Park area with English Heritage 90K visitors per annum. Wrest Park Ltd employment area Silsoe needs an access road into Wrest Park to offload increasing traffic problems including problems with A507 Clophill roundabout.

A6 cycleway - safe, attractive green corridor cycleway.

Keep cars on main roads unless accessing areas. Elstow Station. Off road parking to avoid gridlock.

Keep cars on main roads unless accessing areas. Elstow Station. Off road parking to avoid gridlock.

A bus link between Barton and Harlington Station.

A regular bus service between Barton and Hitchin would be an improvement.

Parking in Barton difficult.

More buses.

We have no bus service - need bus service from East to West of the County.

Minimal bus links through Flitton and Greenfield restrict the mobility of residents and increase reliance on cars. More regular scheduling is needed.

Bus transport is very important to the elderly. Hitchin is the most sensible focus for the route.

Transport cont.

Buses to Hitchin. Buses leaving Barton five minutes apart, then a service gap for two hours, bus to Harlington Station.

Access to Wrest Park and egress from Wrest Park to A6 avoiding the congested village. At present one road in and out!!

Better cycle/foot connectivity between villages.

Due to the rural areas in Central Beds we need good road infrastructure.

Although we do need a bus service to enable people to visit local towns for shopping/work. Because so few use it now, it is no longer sustainable.

Combine public footpaths/bridleways with safe cycleways across open spaces and fields, not just next or on existing roads.

Cycle link to Flitwick from Flitton and Greenfield.

Very few east-west routes to allow commuters to go to Hitchin (etc.) or indeed Harlington.

Barton to Hitchin bus service - regular.

Maintain existing paths which are currently ruined. Making them large enough for kids to cycle to school, pushchairs and wheelchairs.

Parking in the village central and residential areas but not take over open spaces. Private builders should enquire to residential on their comments.

If our trains had more routes/ reasonable cost/seating, more of us would use them. Cars are not the answer.

Improved journey times, especially to London. Modern (or as minimum, updated) stations.

Integrated transport - buses to railway stations, W and E.

There is a lack of parking in Barton, and needs to be looked at on higher level.

More buses to various destinations.

Jobs & Businesses

Question: With your chosen type of Business, please pin-point **one** specific place on the map table using your **lime sticker** where you think there is an opportunity. Please expand below on what you would like to see at this location:

Lot of small businesses already being run from home. Provide suitable space to develop.

Support small business in established locations.

Shops have lack of parking in Barton, discourages use, particularly private owners put up signs to prevent. Rates are too high.

A reduction in rates for local shops to encourage small local businesses (too many charity shops and empty shops at present due to the high rates bills).

Bloor new commercial development.

The village lacks a doctors/dentist.

Keep local business in village.

Mixture of medium and larger outlets.

Hopefully a new road before any of the above not leading on to the A6.

More choice of shops in the High Street.

Local work for local people, minimises transport costs individually and for the wider community and offers a better work life balance if not spending hours travelling!

Services are reducing when we have increased by 47%.

Support small businesses in established locations.

Faldo Road Barton-Le-Clay expand existing industrial estate.

Shillington is lacking retail.

Industrial parks/business parks need to be well planned, not ad hoc, e.g. Wrest Park Silsoe - a traffic disaster.

I would like to see you support our small local businesses. Established businesses need help too. Empty start up building are too abundant already.

I would like to see you support our small local businesses. Established businesses need help too. Empty start up building are too abundant already.

Like Dolittle Mill development at Amphill - character buildings. Not in High Street!

May be a possibility adjacent to the new estates if Wrest Park cannot absorb the demand. It's vital for Silsoe to maintain and develop appropriate tertiary employment.

More use made of industrial park.

More use made of our existing business park.

Small units/office centres have less impact on the nature of the environment while providing work.

Expansion of present business park in Faldo Road.

Most people from village would work in local towns but elements of small start up offices would be helpful to the local community.

No further development.

At existing industrial estate.

The road system does not lend itself to anything other than home working.

Business centre preferably located at Faldo Road industrial estate - not restricted to start-ups.

Tourism opportunities.

Expand Faldo Road business park.

Again the links with Pilgrims Progress locations in Central Bedfordshire and potential and actual tourist opportunities particularly with North America.

The Barton industrial estate could be expanded to offer local employment and thereby reduce traffic of workers travelling further afield.

Too much predominance on estate agents and charity shops, more financial encouragement for traditional retail, e.g. butcher, greengrocer, post office.

Good use for redundant farm buildings.

More opportunities on Barton Industrial Estate

Small villages are not suited to business parks as has been proven by Pulloxhill business park.

We need industrial units in local areas to provide low tech jobs as well as high tech jobs so people with low tech skills can still work locally.

Young people with few educational skills will need low skill jobs.

Low key 'barn style' office units, that are sympathetic to the village in terms of scale and appearance, similar to those heading out of Barton towards Shillington.

However, unacceptable use of language has been omitted.

Environment

Question: With your chosen type of environmental issue, please pin-point **one** specific place on the map table using your **green** sticker where you think there is an opportunity. Please expand below on what you would like to see at this location:

Innovation hub, start up office centre in easily accessible location with bus service and room to expand.

E is a good option - but not as a major village development. Faldo Road perhaps.

Expand existing business/industrial park. This area has much potential and is easily accessed (Faldo Road).

Local afford business to work in and able to reach via transport and by foot.

We need more support for start-up businesses - especially after Brexit.

With good broadband connections many types of near businesses could be accommodated. Improved cellphone (4G) also essential.

Local producer markets/retail units.

No room for extra development of business parks, etc.

Local jobs for local people.

Thomas's Meadow, Hillfoot Road, Shillington

Thomas's Meadow.

With all the extra mass housing being created, local wildlife is under threat. Also, house building will raise the water table, and increase the risk of flooding. Both equally important.

Maintain green belt and countryside around the villages.

Need to preserve what open space we have in Silsoe. Need to work with Wrest Park to ensure all open space is preserved for future generations to enjoy.

To keep green belt and open fields which grow crops around village.

Protect open spaces and walks.

Plenty of open space for peace and quiet for hospice and homes already there.

Has to be Barton Springs and Sharpenhoe Clappers.

Open spaces encourage healthy free exercise, love of nature, etc. for current and future generations.

Concern over flooding at north end of village.

Not possible - should be overall.

Solar farms.

Anglian Water believe parts of Barton-Le-Clay lie within a floodplain. Works to alleviate this potential problem should be carried out.

Silsoe High Street from Ampthill Road junction to Park Avenue. Pollution issue at peak traffic times.

Wind energy. Geothermal/ground source heat pumps on all new houses.

As for 'Local Character' above. Please preserve the countryside all around Silsoe village. We have more than done our bit to accommodate recent housing, etc. development demands!

Speed restrictions or speed cameras.

We have a green and pleasant land, not a brick and concrete one, and we would like to see it continue - with all the wildlife habitats for birds and butterflies, etc. protected.

Just look after open spaces.

Thomas's Field has been in Shillington as a local open space for generations. It is in the conservation area and should be protected.

Traffic calming for Sharpenhow Road, Barton-Le-Clay. It is a rat run from M1 to A1 and vice versa.

Solar or wind farms.

Solar farm.

It is important that gulleys are regularly cleaned out to prevent flooding issues.

We have a number of open spaces and country parks, an SSSI and heritage buildings which should be protected.

Buffer for road noise along A6 bypass.

Reduction in traffic through the village.

Linking up Flitton and Flitwick Moors to create a single, larger, more robust wetland unit.

Solar panels on roof - but inset so they don't look bad. They have these in Woking where my parents live so you have to look to see them.

Barton and its environs are of national importance and must be protected at all costs.

Traffic calming on Barton Main Street needed.

Leave Barton Hills alone for wildlife.

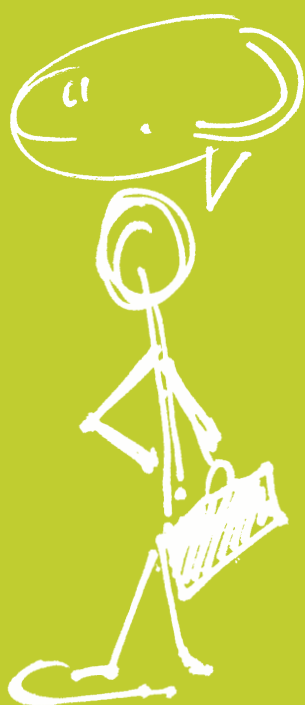
Traffic doing 50-80 on our quiet roads. Need speed cameras.

Excessive building has exacerbated potential flooding as there is less ground for water to soak into. Ditches and culverts need to be serviced more regularly and kept clean.

Climate change is the biggest challenge facing mankind and unless we address this any other planning will be useless!

As more homes cover front gardens in car parking spaces, so issues with rain water and flooding. Windsor Road.

Protection of open space between properties as is the nature of these small villages.



Environment cont.

It would if energy could be produced near to where it is used. i.e. solar panels.

Solar panels and wind farms are needed.

Protect the wildlife in fields around Barton Watermill and Faldo Farm incl the existing watercourse, moat and ponds. Prevent pollution to these.

Link Flitton Moor with Flitwick Moor. Create "green" corridor along River Flit.

Don't forget Barton is a 'village' in the country.

Preserve our walking areas for our children to enjoy.

Renewable energy, i.e. wind farms, are good ideas but make them more fitting the surroundings, i.e. old fashioned windmills. I can't just tick one of the boxes as I value all of them.

Wind turbines, why are we not using more? Fracking is ridiculous in comparison. Denmark has energy surplus due to sufficient wind investment.

Wildlife habitats are reducing at alarming rates. Conserving existing ones isn't enough, new interconnected open spaces need to be identified.

We need to embrace renewables. All new homes to have solar energy - enough to feed in. Wind in viable areas - personally I love the look of wind turbines. (Noise needs sorting.)



Homes

Question: With your chosen type of Home, please pin-point **one** specific place on the map table using your **purple sticker** where you think there is an opportunity. Please expand below on what you would like to see at this location:

Lot of elderly having to move outside the village - more bungalows needed to enable downsizing and free up larger homes currently housing 1 person (housing Assocs Aragon).

Sheltered accommodation for the elderly would also support general needs.

There are a lot of family breakups where people find themselves single, making a fresh start and need living accommodation but could be community based flats with leisure facilities or be matched with new starter homes to get youngsters on the housing ladder. Especially locals when price rises.

Homes for the elderly to move into vacating bigger properties and starter homes for local youngsters at a price they can afford to pay the mortgage.

It is important to have starter homes, we all need to start somewhere. This needs consideration in relation to cost and not encroaching on 'green field' sites.

There are insufficient properties in the village for current residents to downsize.

Barton-Le-Clay has insufficient properties for older people to downsize, many single people occupy 3 bedroom homes.

Most young families cannot afford to live in village.

More sheltered houses to that people can have independence but be near to assistance when required.

It is generally very hard for young people to find homes they can afford to buy or even RENT!

There are nowhere near enough affordable homes for local youngsters growing up who want to stay in the area. Developers rely too much on the huge profits they make from "executive" homes so do not want to build cheaper properties.

No known capacity for single living.

Bungalows, flats and sheltered accommodation for the elderly.

Pepper-pot, where needed more, on applications.

Natural expansion of village. A good mix of first time buys and social housing.

Barton-Le-Clay is lacking homes for new, young households to help counter the aging population. However any such new development should be restricted in size so as not to change character of the village.

Opportunities for older people to downsize within the villages. More bungalows, affordable housing.

I do not see a major need for extra houses - other than a government pressure for numbers. So listen to the communities and let us develop in small sympathetic ways - NOT major out of proportion development.

Early retired community style living, high quality architecture and garden opportunities.

It's important that young people growing up in our area can afford to continue living here rather than being forced out because they cannot afford the housing. We need a balanced community, not dominated by retirees and commuters.

Residential areas with walkways.

By building property for the older generation you free up homes for families.

If you build houses for the older generation you free up family homes.

Hexton Road left hand side past farm.

No houses immediately needed but small number around the perimeter of the village would be appropriate.

Somewhere in the village for older people to move out will free up family housing.

Small infill - affordable homes for rent or shared ownership.

We need restricted development of affordable and retirement properties including bungalows with restriction to prevent conversion to two storey houses.

A lot of villagers would like to downsize from 3/4 to bungalow style properties.

However, unacceptable use of language has been omitted.



Elderly persons "village" with care facilities. Additionally (B) single living accommodation.

Elderly persons "village" with care facilities. Additionally (B) single living accommodation.

Silsoe needs sheltered and affordable housing.

To maintain a mixed, vibrant community we need residents at all life stages. We are losing bungalows due to loft conversions, etc. There are few small houses to let people onto the property ladder in villages.

To maintain a mixed, vibrant community we need residents at all life stages. We are losing bungalows due to loft conversions, etc. There are few small houses to let people onto the property ladder in villages.

There is a need in Barton for 1 and 2 bed affordable housing for elderly people, freeing up larger properties for larger families. We need another block of sheltered housing.

Youngsters are being priced out of the property market which is directly influenced by demand in the London commuter belt. Local youngsters need help.

Retirement flats needed.
Housing association or private.

For the young and older people.

The high cost of housing generally is driving new house-owners (predominantly the younger population) out of the village, thereby raising the average age of the remaining residents.

Young people from the village have little chance of buying or renting a suitable home.

Look for small sites in Barton for affordable housing. Possible relocation of Barton Rovers? What about the traveller community?

Older generation that need to downsize and want to remain in the village. Ideally bungalow type units or sheltered.

Villages are full of larger properties with nowhere for older generations to downsize to so releasing for families.

Small scale developments should be encouraged in villages to provide local homes for local people.

Low income tenants need local homes to remain in the village of their family.

Adjacent to Arnold Academy seems a sensible location for a retirement home/sheltered accommodation. There may be an opportunity here to provide parking within the scheme for existing houses to ease congestion in term time along this road, accessible to Barton by foot, i.e. shops, doctor, etc.

Affordable homes somewhere in Flitton and Greenfield not necessarily where rural exception housing located.

Whilst new starter homes are important they also need to be affordable. Local people in Barton (and doubtless most villages) simply cannot afford to live where they were brought up.

When do we actually stop building - not entirely a NIMBY viewpoint. Barton has had much development - but is always pressed upon for more. When will saturation point be recognised?

Many of the residents in our street live in large family homes because of the lack of opportunity to downsize and remain in the village.

All types of homes are needed but not tread on other areas, i.e. open spaces, green spaces, SSSI sites.

The nature of our village requires more "family" housing.

Many older people are delaying downsizing. We need quality homes that are easy to maintain.

Within easy reach of shops and transport.

More homes for young Barton people.



Growth & Infrastructure

Question: With your chosen type of Infrastructure, please pin-point **one** specific place on the map table using your **orange sticker** where you think there is an opportunity. Please expand below on what you would like to see at this location:

Could accommodate healthcare as well as local small businesses and leisure/play areas.

All items listed are inadequate.

Barton-Le-Clay is growing in size with new housing. Lots of demand on sports facilities no more provision. Set up 'recreational trust'. Needs a MUGA surface. Nothing for teenagers. Youth clubs and holiday clubs for teen would be great.

Very difficult to choose one. This village needs a new school as both are currently full with waiting lists, we have very few leisure facilities. We need a bigger doctors surgery - it currently takes about 3 weeks to get a normal appointment. The broadband needs improving, and we only have the village hall and a library that opens 3 and a half days a week.

Very difficult to choose one. This village needs a new school as both are currently full with waiting lists, we have very few leisure facilities. We need a bigger doctors surgery - it currently takes about 3 weeks to get a normal appointment. The broadband needs improving, and we only have the village hall and a library that opens 3 and a half days a week.

This is definitely a priority. Villagers have to travel to Barton or Amptill currently. To say that people have transport is not the way forward. 'Local' is the name of the game.

This is an ongoing situation with telecommunications currently high on the list.

Surrounding areas have built new estates with no additional provision for healthcare.

Very difficult to choose as all are needed to be considered.

Walk in centres.

All of these if you plan to build houses.

Doctors surgery already covers a very wide area - not enough doctors to

cope with current population.

A local swimming pool would be beneficial. No cars as in walking distance, health and leisure benefits for all, promoting a more friendly and inclusive community.

Desperately need more services AND healthcare.

Our present health centre is overrun. One has to wait 4 or 5 weeks to see one's own doctor.

There is no specific place available.

Expansion of GP facilities clinic/health centre. The location would help both Silsoe and Barton and other near villages.

Barton-Le-Clay suffers from regular power cuts which suggests improvements are needed.

Doctor surgery(ies) within Silsoe, perhaps incorporating a chemist facility?

All of the local schools are becoming overcrowded.

Doubling of village size requires it! Delay in appointments at Barton - seems overstretched.

Mobile phone/internet connection is vital for all residents/workers rather than remaining on the periphery of supply as at the moment. Presumably the infrastructure to provide for this would be located outside our area ...

Difficult choice only having one option as all these are important.

There are more services I would like to tick but a leisure facility would help keep the young occupied and could incorporate a community centre.

Better broadband and better drainage/sewerage facilities. There is a terrible smell at times.

Hexton Road.

Self explanatory in Shillington.

An upper school is required urgently.

Sports/swimming centre.

Improve parking at school.

Increased doctor facilities are required in Flitwick.

Larger doctors with additional facilities.

Village consultation centre/space for outreach health services.

Actually health and social care virtual infrastructure to support people in their own home.

We currently share doctors surgery with many other locations and Barton's surgery cannot cope.

The Barton doctor's surgery is becoming heavily used with residents from outside the village forced to use it. Silsoe is a case in point. Either a bigger surgery in Barton or new ones to cater for growing populations.

More doctors in Barton.

We are on cesspits! 21st C this should not be with places either side that do not have to cope with this!!

Broadband needs to be improved, especially with Silsoe exchange as slow speeds are prompting home-based businesses to move.

The school will need quality expansion in Shillington.

As Silsoe grows we need GP practice there to take pressure off Barton.

Urgent requirement for hot desking health centre where it can be shared by doctors, dentists, podiatry, eyecare, etc.

Better connectivity to the smaller villages for high speed internet.

In villages where old village halls need to be replaced should be replaced by community halls with multi functions.

With the increasing elderly population, young people are moving to the towns for work. We need to supply local healthcare for the older population.

Improvement to electricity supply to reduce power cuts particularly on the Grange Road estate. Is this an issue with the sub-station here?

New lower school. Existing schools in Greenfield and Pulloxhill are too big for existing sites and cause very bad traffic congestion and are old buildings which will not last.

Location of the ever expanding lower school is very poor. It's hard to park near and with the pre-school expansion this will become a bigger problem.

However, unacceptable use of language has been omitted.

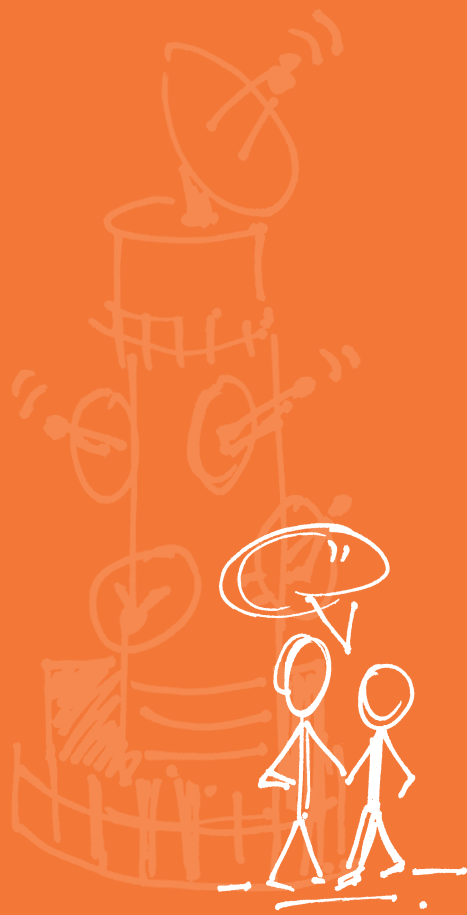
All these facilities needed within the 'village' communities but has to be balanced with other issues.

Our local clinic is ridiculously over-subscribed. Hard to get an appointment, expect a big wait. Going to get worse ...

Electricity frequently fails, water pressure very low, broadband speeds execrable, cellphone reception poor - all need improving.

Need a doctor surgery that provides a base for more healthcare. We should be able to access blood tests easily and not have to drive to L & D for those or other screenings. Maybe NHS services not GPs making profits by cutting services.

Leisure centres for older children, instead of them roaming the streets and causing problems.



Appendix - Supplementary Questions on Feedback Form

Thank you for responding to this consultation.

Your views will help us to shape the Community Plan that will inform the Local Plan, influence development decisions and help direct investment where it is needed. There will also be other opportunities to comment on the Local Plan as it is developed. There will be an opportunity to express your views in more detail at the next stage.

Please answer the following questions:

Gender: Male Female Age range: Under 18 18-25 26-35 36-45 46-64 65+

What postcode do you live at? _____

Which town/village do you shop at most often? _____

I am a local resident I am a Town or Parish Councillor for _____

I am an organisation representative please state _____

Which town/village do you work in (if applicable)? _____

Do you consider yourself to be disabled? Yes No

To which of these groups do you consider you belong? White British Black or Black British
 Asian or Asian British Mixed Chinese Other Ethnic group (please write in) _____

Would you like to be informed of the arrival of the Consultation Draft of the Community Plan for your area? We can notify you of its publication.

Be assured that your personal details will not be published in any report or passed to a third party.

By post or email

Name: _____

Address _____

Email: _____

Please tick if you would like to be kept informed of Local Plan Updates.

After completing this feedback form please place in box at front door.

Or post back to us at Local Plans, Priory House, Monks Walk, Chicksands, Shefford, Bedfordshire SG17 5TQ

Data Protection Act 1998 Please note that your personal details supplied on this form will be held and/or computerised by Central Bedfordshire Council for the purpose of the Local Plan. The information collected may be disclosed to officers and members of the Council and its' partners involved in this consultation. Summarised information from the forms may be published, but no individual details will be disclosed under these circumstances. **Your personal details will be safeguarded and will not be divulged to any other individuals or organisations for any other purposes.**

Sign up for email updates ...

 www.centralbedfordshire.gov.uk/localplanupdates

More information on the Local Plan can be found here...

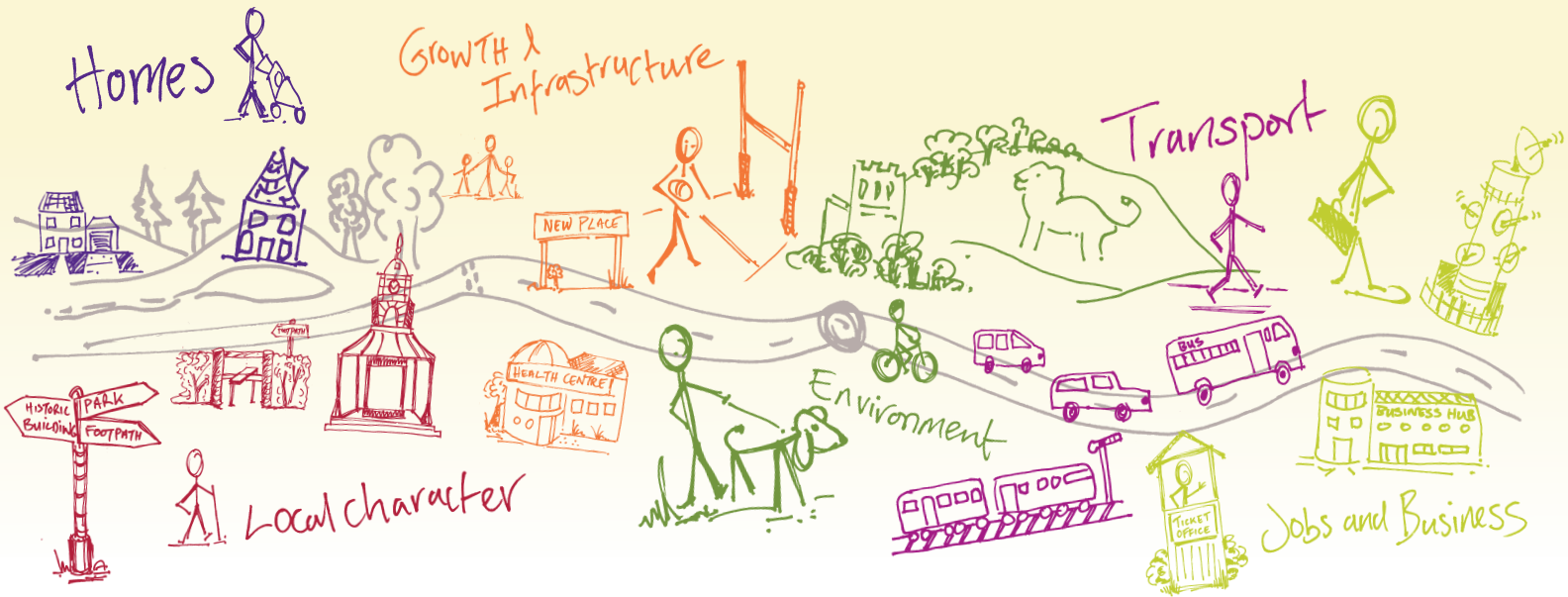
 www.centralbedfordshire.gov.uk/localplan

Appendix – Supplementary Questions Summary

Public Consultation Barton Attendees Record

	Gender	Age	Res/Cllr/Org	Disabled?	Ethnic Group
Response	Male: 43 (57.3%)	Under18: 0 (0.0%)	Resident: 50 (69.4%)	Disabled-Y: 0 (0.0%)	White British: 74 (100.0%)
	Female: 32 (42.7%)	18-25: 0 (0.0%)	Councillor: 8 (11.1%)	Disabled-N: 75 (100.0%)	Black or Black British: 0 (0.0%)
	Unknown: 0 (0.0%)	26-95: 0 (0.0%)	Organisation: 1 (1.4%)		Asian or Asian British: 0 (0.0%)
		36-45: 4 (5.5%)			Mixed: 0 (0.0%)
		46-64: 18 (24.7%)			Chinese: 0 (0.0%)
		65+: 50 (68.5%)			Other Ethnic Group: 0 (0.0%)
Nothing Recorded	8	10	11	8	9
Total	83	83	83	83	83

Shaping where you live 2035



What happens next?

Community Planning is a continuing process and this Community Plan, which collates all the information gathered at the event, is the first time this type of information has been collected. There will be a series of actions arising from the Community Plan which are likely to influence or shape planning policy in the Local Plan, decisions on planning applications, and decisions on where money arising from development should be spent. These actions are identified in total within the 'Overview Statement of Community Planning' which details how they will be dealt with. Central Bedfordshire Council will seek to work in partnership with organisations including Town and Parish Councils, developers and other agencies to deliver on these actions.

For more info on community planning ...

www.centralbedfordshire.gov.uk/community-planning

More information on the Local Plan can be found here...

www.centralbedfordshire.gov.uk/localplan

Disclaimer Central Bedfordshire Council is the statutory Planning Authority for the area and therefore is bound by legislation and must have regard to government guidance on planning matters.

Community Plan produced in consultation with Central Bedfordshire Council supported by www.lda-design.co.uk

This document contains:

Contains OS data © Crown copyright and database right 2016
Contains Royal Mail data © Royal Mail copyright and Database right 2016
Contains National Statistics data © Crown copyright and database right 2016

Central Bedfordshire Council:
© Crown Copyright and database right. 2016 Ordnance Survey 100049029

Central
Bedfordshire

A great place to live and work.