

# **Community Governance Review**

## **Draft Recommendations (Revised)**



## Contents

1.	Introduction.....	7
2.	The Review.....	7
3.	Parish and Ward Boundaries.....	8
4.	Draft Recommendations by Parish.....	8
5.	Next steps- Representations.....	8
6.	Data protection.....	8
7.	Amptill Parish.....	11
8.	Arlesey Parish.....	14
9.	Aspley Guise Parish.....	15
10.	Aspley Heath Parish.....	16
11.	Astwick Parish.....	17
12.	Barton-Le-Clay Parish.....	18
13.	Battlesden Parish.....	19
14.	Biggleswade Parish.....	20
15.	Blunham Parish.....	24
16.	Brogborough Parish.....	26
17.	Caddington Parish.....	27
18.	Campton & Chicksands Parish.....	29
19.	Chalgrave Parish.....	30
20.	Chalton Parish.....	31
21.	Clifton Parish.....	32
22.	Clophill Parish.....	33
23.	Cranfield Parish.....	34
24.	Dunstable Parish.....	35
25.	Dunton Parish.....	39
26.	Eaton Bray.....	40
27.	Edworth Parish.....	41
28.	Eggington Parish.....	42
29.	Eversholt Parish.....	43
30.	Everton Parish.....	44
31.	Eyeworth Parish.....	45

32.	Fairfield Parish.....	46
33.	Flitton & Greenfield Parish.....	47
34.	Flitwick Parish.....	48
35.	Gravenhurst Parish.....	49
36.	Great Billington Parish.....	50
37.	Harlington Parish.....	51
38.	Haynes Parish.....	52
39.	Heath & Reach Parish.....	53
40.	Henlow Parish.....	54
41.	Hockliffe Parish.....	56
42.	Houghton Conquest Parish.....	57
43.	Houghton Regis Parish.....	60
44.	Hulcote & Salford Parish.....	63
45.	Husborne Crawley Parish.....	64
46.	Hyde Parish.....	65
47.	Kensworth Parish.....	66
48.	Langford Parish.....	67
49.	Leighton-Linslade Parish.....	68
50.	Lidlington Parish.....	71
51.	Marston Moretaine Parish.....	72
52.	Maulden Parish.....	73
53.	Meppershall Parish.....	75
54.	Millbrook Parish.....	76
55.	Milton Bryan Parish.....	77
56.	Moggerhanger Parish.....	78
57.	Northill Parish.....	81
58.	Old Warden Parish.....	84
59.	Potsgrove Parish.....	85
60.	Potton Parish.....	86
61.	Pulloxhill Parish.....	87
62.	Ridgmont Parish.....	88
63.	Sandy Parish.....	89
64.	Shefford Parish.....	92

65.	Shillington Parish.....	93
66.	Silsoe Parish.....	94
67.	Slip End Parish.....	95
68.	Southill Parish.....	96
69.	Stanbridge Parish.....	97
70.	Steppingley Parish.....	98
71.	Stondon Parish.....	99
72.	Stotfold Parish.....	100
73.	Streatley Parish.....	101
74.	Studham Parish.....	102
75.	Sundon Parish.....	103
76.	Sutton Parish.....	104
77.	Tempsford Parish.....	105
78.	Tilsworth Parish.....	106
79.	Tingrith Parish.....	107
80.	Toddington Parish.....	108
81.	Totternhoe Parish.....	109
82.	Westoning Parish.....	110
83.	Whipsnade Parish.....	111
84.	Woburn Parish.....	112
85.	Wrestlingworth & Cockayne Hatley Parish.....	113



## **1 Introduction**

1.1 Central Bedfordshire Council, at its meeting on Thursday 26 October 2017 resolved that a Community Governance Review be conducted for the whole of the Council's area in accordance with Part 4 Chapter 3 of the Local Government and Public Involvement and Health (LGPIH) Act 2007

## **2 The Review**

2.1 The Review commenced on 1 November 2017, when the Council published a Terms of Reference document and invited initial submissions from individuals or organisations who had an interest in the Review. In the Terms of Reference, the Council published a timetable for the Review.

2.2 A briefing session was held at the Town and Parish Council Conference on 21 November 2017. All parish and town councils were invited to attend with the majority of the towns and parishes being represented. Officers also attended, by invitation, Houghton Regis Town Council to outline the remit of the review and process.

2.3 The formal consultation period, inviting interested parties to make initial submissions, commenced on 1 November 2017 and closed on 1 February 2018. The consultation was published on the Council's web site, local libraries and public notice boards, but more targeted engagement was sent to:

- All Central Bedfordshire Councillors;
- All Town and Parish Councils;
- Bedfordshire Association of Town/Parish Councils;
- Central Bedfordshire Members of Parliament;
- Residents'/Tenants' Associations;
- Businesses/Business Forums/Small Business Federations/Area Forums;
- Bedfordshire Green Business Network;
- Bedfordshire & Luton Chamber of Business;
- Leighton Buzzard Business Club;
- Chambers of Trade/Commerce;
- Bedfordshire Rural Communities Charities;
- Community Voluntary Services;
- Voluntary Community Action;
- Citizens Advice Bureau – local offices;
- Campaign to Protect Rural England (Bedfordshire);
- Age Concern/Golden years/Over 60's Groups/Senior Citizens;
- Bedfordshire Police;
- Bedfordshire Police & Crime Commissioner;
- Acting Returning Officer, Bedford Borough Council; and
- Acting Returning Officer, Luton Borough Council.

2.4 In preparing these draft proposals, the Council has been mindful of the initial submissions that have been received, which are referenced in this document. The Council also has the role of balancing these submissions against the wider

requirements and duties that are placed upon it in the 2007 Act. In particular, the Council has a duty to ensure that community governance within its area under review reflects the identities and interests of the community in that area; and is effective and convenient.

2.5 In assessing these criteria, the community governance review is required to consider:

- The impact of community governance arrangements on community cohesion; and
- The size, population and boundaries of a local community or parish.

### **3 Parish and Ward Boundaries**

3.1 Principal council wards cannot be altered by the principal council in a Community Governance Order. However, consequential arrangements can be made by the Local Government Boundary Committee for England (LGBCE) as to what related alterations should be made to the boundaries of the principal council wards, and the LGBCE may by order give effect to these recommendations.

### **4 Draft Recommendations by Parish**

4.1 As the Community Governance Review includes a review of the whole of the Central Bedfordshire Council area, this document is divided into sections relating to each parish to assist the reader to follow the proposed changes.

4.2 Each section follows a consistent structure, including a summary of the existing boundary areas, warding, the total number of councillors, the baseline electorate (September 2017) the projected 5-year electorate forecasts, the ratio of electors per councillor and the variance of the ratio from the average. Details of any representations received have been referenced, a summary of the 2011 and 2015 elections and an explanation for any proposed changes have also been included.

### **5 Next steps- Representations**

5.1 All residents and other persons or organisations wishing to make representations on the draft recommendations may do so by completing the questionnaire on our website at [www.centralbedfordshire.gov.uk/consultations](http://www.centralbedfordshire.gov.uk/consultations) or you can pick up a paper copy from your local library or Central Bedfordshire Council offices at Chicksands or Dunstable.

5.2 Representations that are received will be considered by judging them against the criteria in the Local Government and Public Involvement in Health Act 2007.

5.3 The deadline for receipt of comments 30 June 2018.

5.4 It would be helpful if you could make it clear in your response whether you represent an organisation or group, and in what capacity you are responding.

### **6 Data Protection Act 1998**

6.1 Please note that your personal details supplied in your submission will be held and/or computerised by Central Bedfordshire Council for the purpose of this



consultation. The information collected may be disclosed to officers and members of the Council and its' partners involved in this consultation. Summarised information from the submission may be published, but no individual details will be disclosed under these circumstances. Your personal details will be safeguarded and will not be divulged to any other individuals or organisations for any other purposes.



# Amphill

## 1 Background

Parish Ward	Seats	1 Sept 2017 Electorate	31 March 2023 Electorate	Ratio Electors to Seats	Forecast Ratio Electors to Seats	Variance from Average
Not Applicable	12	6250	6881	521	573	+80%

1.1 Amphill parish has a Town Council. It is unwarded and has 12 seats on the Council. The forecast development to March 2023 is estimated at a further 371 dwellings.

1.2 The parish boundary adjoins the neighbouring parishes of Flitwick, Houghton Conquest, Maulden, Millbrook and Steppingley. The parish, together with the parishes of Clophill and Maulden are coterminous within the district ward of Amphill.

1.3 The Town Council did not submit a response to the invitation of initial submissions. However, 6 online responses of which the majority recommended no changes were received from the public can be found at <http://www.centralbedfordshire.gov.uk/council/consultations/results.aspx>.

1.4 Whilst the 2011 elections were uncontested with 11 nominations and the 2015 elections were contested with 13 nominations and in consideration of the further planned development no changes to the number of parish councillors is recommended at this time.

1.5 The overall projected electorate growth over 5 years is 10.1%.

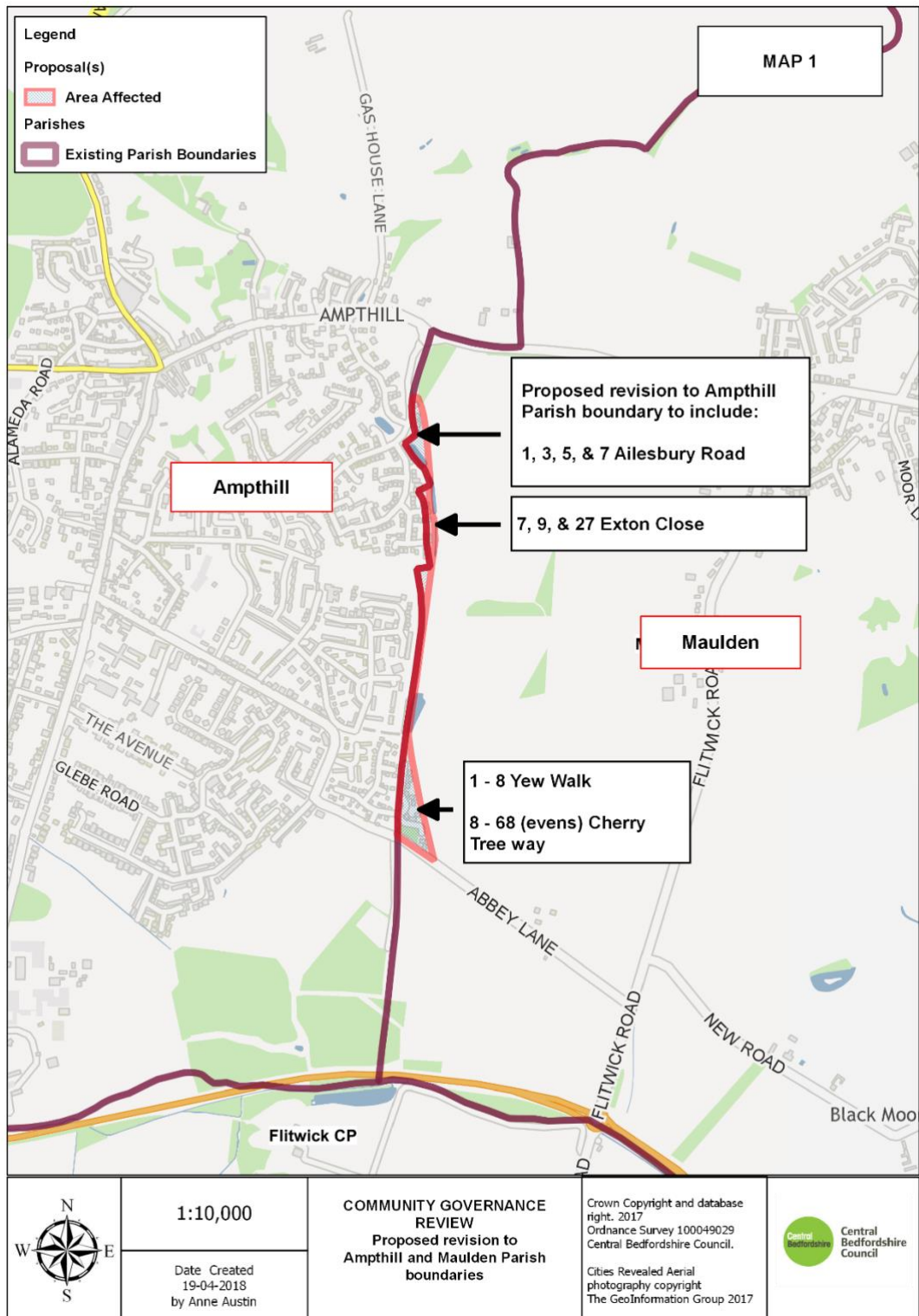
1.6 Development to the east of the town in the 1980's and 90's extended across the parish boundaries of Amphill and Maulden (as shown at Map 1). It is therefore recommended that this anomaly is corrected by formally incorporating the relevant properties into the parish of Amphill. Additionally, the development at Houghton Park Farm in the north of the parish has extended into the parish of Houghton Conquest (as shown at Map 2). It is therefore recommended that this anomaly is corrected by formally incorporating the relevant properties into the parish of Amphill.

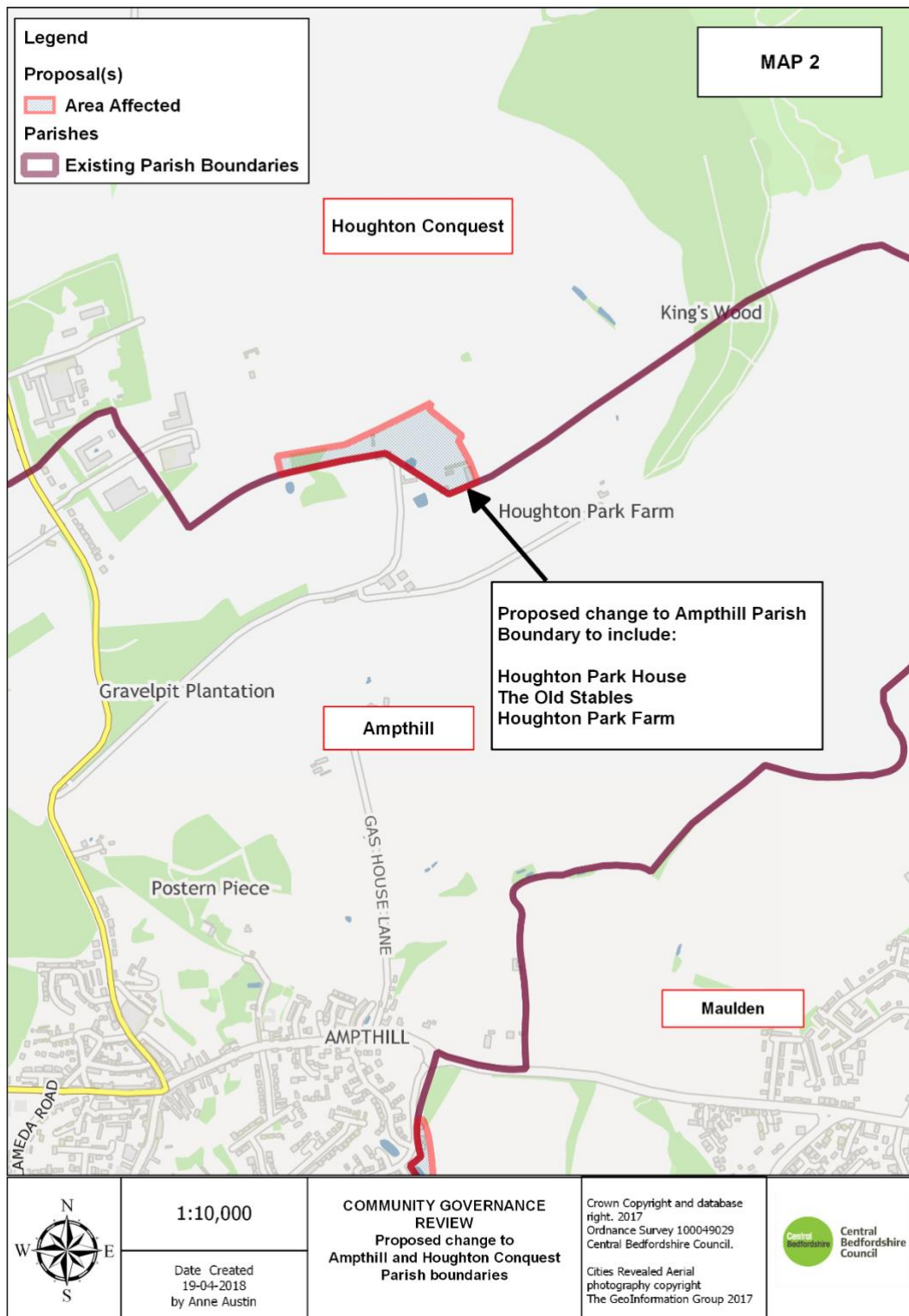
## 2 Draft Recommendations

2.1 That the parish name of Amphill should remain unchanged.

2.2 That the number of parish councillors on Amphill Town Council remain unchanged (twelve).

2.3 That the boundaries of the parish be changed to incorporate the properties at Numbers 1 to 8 Yew Walk; 8 to 68 (evens) Cherry Tree Way; 7, 9 & 27 Exton Close and 1 to 7 (odds) Ailesbury Road together with the properties Houghton Park Farm, Houghton Park House and The Old Stables.





# Arlesey

## 1 Background

Parish Ward	Seats	1 Sept 2017 Electorate	31 March 2023 Electorate	Ratio Electors to Seats	Forecast Ratio Electors to Seats	Variance from Average
Not Applicable	15	4424	4682	295	312	-2%

1.1 Arlesey parish has a Town Council. It is unwarded and has 15 seats on the Council. The forecast development to March 2023 is estimated at a further 152 dwellings.

1.2 The parish boundary adjoins the neighbouring parishes of Astwick, Fairfield, Henlow, Langford and Stotfold. The parish, together with the parishes of Clifton, Henlow and Stondon are coterminous within the district ward of Arlesey.

1.3 The Town Council together with 3 members of the public completed the online consultation; with the Town Council suggesting a reduction in the number of councillors. However, this proposal was not supported in the 3 submissions from the public. The online responses received can be found at <http://www.centralbedfordshire.gov.uk/council/consultations/results.aspx>.

1.4 The 2011 elections were uncontested with 14 nominations. However, the 2015 elections were contested with 22 nominations. Nevertheless, it is recommended that the number of councillors be reduced to 12 which would have the effect of increasing the ratio of electors to seats to 390 (+22% variance from average).

1.5 The overall projected electorate growth over 5 years is 5.8%.

## 2 Draft Recommendations

2.1 That the parish name of Arlesey should remain unchanged;

2.2 That the number of parish councillors on Arlesey Town Council be reduced to twelve; and

2.3 That no change should be made to the parish boundary of Arlesey.

# Aspley Guise

## 1 Background

Parish Ward	Seats	1 Sept 2017 Electorate	31 March 2023 Electorate	Ratio Electors to Seats	Forecast Ratio Electors to Seats	Variance from Average
Not Applicable	12	1818	1833	152	153	-52%

1.1 Aspley Guise parish has a Parish Council. It is unwarded and has 12 seats on the Council. The forecast development to March 2023 is estimated at a further 9 dwellings.

1.2 The parish boundary adjoins the neighbouring parishes of Aspley Heath, Hulcote & Salford, Husborne Crawley and Woburn. The parish, together with the parishes of Aspley Heath, Battlesden, Eversholt, Husborne Crawley, Milton Bryan, Potsgrove and Woburn are coterminous within the district ward of Aspley & Woburn.

1.3 Neither the Parish Council nor the public submitted a response to the invitation of initial submissions.

1.4 The 2011 and 2015 elections were uncontested with 12 nominations in 2011 and only 4 nominations in 2015. Consequently, it is recommended that the number of councillors be reduced to 7 which would have the effect of increasing the ratio of electors to seats to 262 (-18% variance from average).

1.5 The overall projected electorate growth over 5 years is 0.8%.

## 2 Draft Recommendations

2.1 That the parish name of Aspley Guise should remain unchanged;

2.2 That the number of parish councillors on Aspley Guise Parish Council be reduced to seven; and

2.3 That no change should be made to the parish boundary of Aspley Guise.

## Aspley Heath

### 1 Background

Parish Ward	Seats	1 Sept 2017 Electorate	31 March 2023 Electorate	Ratio Electors to Seats	Forecast Ratio Electors to Seats	Variance from Average
Not Applicable	9	521	536	58	60	-81%

1.1 Aspley Heath parish has a Parish Council. It is unwarded and has 9 seats on the Council. The forecast development to March 2023 is estimated at a further 9 dwellings.

1.2 The parish boundary adjoins the neighbouring parishes of Aspley Guise and Woburn. The parish, together with the parishes of Aspley Guise, Battlesden, Eversholt, Husborne Crawley, Milton Bryan, Potsgrove and Woburn are coterminous within the district ward of Aspley & Woburn.

1.3 Neither the Parish Council nor the public submitted a response to the invitation of initial submissions.

1.4 The 2011 elections were uncontested with only 6 nominations and the 2015 elections were uncontested with 9 nominations. Consequently, it is recommended that the number of councillors be reduced to 7 which would have the effect of increasing the ratio of electors to seats to 77 (-76% variance from average).

1.5 The overall projected electorate growth over 5 years is 2.9%.

### 2 Draft Recommendations

2.1 That the parish name of Aspley Heath should remain unchanged;

2.2 That the number of parish councillors on Aspley Heath Parish Council be reduced to seven; and

2.3 That no change should be made to the parish boundary of Aspley Heath.



## Astwick

### 1 Background

Parish Ward	Seats	1 Sept 2017 Electorate	31 March 2023 Electorate	Ratio Electors to Seats	Variance from Average
Not Applicable	N/A	24	24	N/A	

1.1 Astwick is one of the seven parishes which do not have a Council but meets as a parish meeting.

1.2 The parish boundary adjoins the neighbouring parishes of Arlesey, Biggleswade, Edworth, Langford and Stotfold. The parish, together with the parishes of Fairfield, Langford and Stotfold are coterminous within the district ward of Stotfold & Langford

1.3 Neither the Parish Meeting nor the public submitted a response to the invitation of initial submissions.

1.4 There are only 12 properties and 24 electors in the parish and there is no anticipated growth over the next 5 years. The parish operates as a parish meeting and has a relatively strong sense of identity.

1.5 The overall projected electorate growth over 5 years is nil.

### 2 Draft Recommendations

2.1 That the parish name of Astwick should remain unchanged;

2.2 That the parish should not have a parish council; and

2.3 That no change should be made to the parish boundary of Astwick.

## Barton-Le-Clay

### 1 Background

Parish Ward	Seats	1 Sept 2017 Electorate	31 March 2023 Electorate	Ratio Electors to Seats	Forecast Ratio Electors to Seats	Variance from Average
Not Applicable	13	4081	4100	314	315	-1%

1.1 Barton-Le-Clay parish has a Parish Council. It is unwarded and has 13 seats on the Council. The forecast development to March 2023 is estimated at a further 11 dwellings.

1.2 The parish boundary adjoins the neighbouring parishes of Pulloxhill, Shillington, Silsoe and Streatley. The parish is coterminous with the district ward of Barton-Le-Clay.

1.3 Neither the Parish Council nor the public submitted a response to the invitation of initial submissions.

1.4 The 2011 and 2015 elections were uncontested with 10 nominations on each occasion. Consequently, it is recommended that the number of councillors be reduced to 10 which would have the effect of increasing the ratio of electors to seats to 410 (+29% variance from average).

1.5 The overall projected electorate growth over 5 years 0.5%.

### 2 Draft Recommendations

2.1 That the parish name of Barton-Le-Clay should remain unchanged;

2.2 That the number of parish councillors on Barton-Le-Clay Parish Council be reduced to ten; and

2.3 That no change should be made to the parish boundary of Barton-Le-Clay.

## Battlesden

### 1 Background

Parish Ward	Seats	1 Sept 2017 Electorate	31 March 2023 Electorate	Ratio Electors to Seats	Variance from Average
Not Applicable	N/A	28	28	N/A	

1.1 Battlesden is one of the seven parishes which do not have a Council but meets as a parish meeting.

1.2 The parish boundary adjoins the neighbouring parishes of Chalgrave, Heath & Reach, Hockliffe, Milton Bryan, Potsgrove and Toddington. The parish, together with the parishes of Aspley Guise, Aspley Heath, Eversholt, Husborne Crawley, Milton Bryan, Potsgrove and Woburn are coterminous within the district ward of Aspley & Woburn.

1.3 Neither the Parish Meeting nor the public submitted a response to the invitation of initial submissions.

1.4 There are only 17 properties and 28 electors in the parish and there is no anticipated growth over the next 5 years. The parish operates as a parish meeting and has a relatively strong sense of identity.

1.5 The overall projected electorate growth over 5 years is nil.

### 2 Draft Recommendations

2.1 That the parish name of Battlesden should remain unchanged;

2.2 That the parish should not have a parish council; and

2.3 That no change should be made to the parish boundary of Battlesden.

# Biggleswade

## 1 Background

Parish Ward	Seats	1 Sept 2017 Electorate	31 March 2023 Electorate	Current Ratio Electors to Seats	Forecast Ratio Electors to Seats	Variance from Average
Holme	3	1834	1849	611	616	+93%
Ivel	7	6769	8284	967	1183	+271%
Stratton	5	6801	6801	1360	1360	+326%

1.1 Biggleswade parish has a Town Council and is currently divided into 3 wards. Biggleswade Holme with 3 councillors, Biggleswade Ivel with 7 councillors and Biggleswade Stratton with 5 councillors. The forecast development to March 2023 is estimated at a further 900 dwellings.

1.2 The parish boundary adjoins the neighbouring parishes of Astwick, Dunton, Edworth, Langford, Northill, Old Warden, Sandy, Southill, and Sutton. The parish, is coterminous within the 2 district wards of Biggleswade North and Biggleswade South.

1.3 The submission from the Town Council to extend the boundaries to the north, south and east together with the changes in the number of parish ward councillors can be found on

<http://www.centralbedfordshire.gov.uk/council/consultations/results.aspx> Further submissions from both the public and interested parties can also be seen via the same link. The submission from the Town Council, supported by the development promoter, to extend the parish boundaries into the neighbouring parishes of Dunton, Edworth and Sutton was rejected as being contrary to the Terms of Reference. However, the submission to incorporate the Sainsbury's supermarket and adjacent properties into the parish boundary together with the proposal to redraw the internal parish ward boundaries between Holme ward and Stratton ward were considered to have merit (maps 3 and 4 refer).

1.4 The 2011 elections were contested in all 3 wards with 6 nominations for Holme; 10 nominations for Ivel and 7 nominations for Stratton. However, for the 2015 elections the Holme and Stratton wards were uncontested with 3 and 5 nominations respectively. The Ivel ward was contested with 8 nominations.

1.5 The overall projected electorate growth over 5 years for the Holme ward is 0.8%; for the Ivel ward 22.4% and 0% for the Stratton ward.

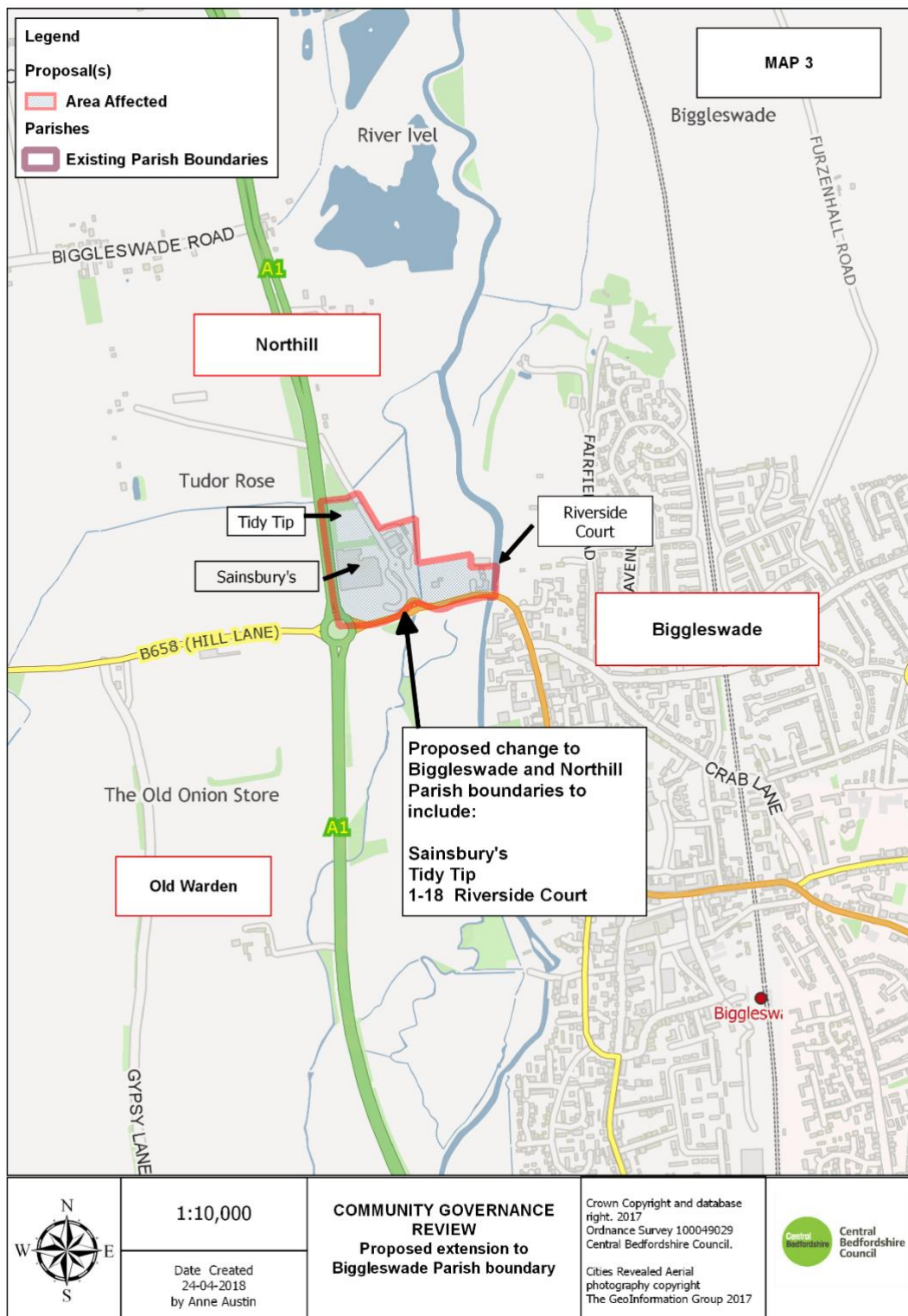
## 2 Draft Recommendations

2.1 That the parish name of Biggleswade should remain unchanged;

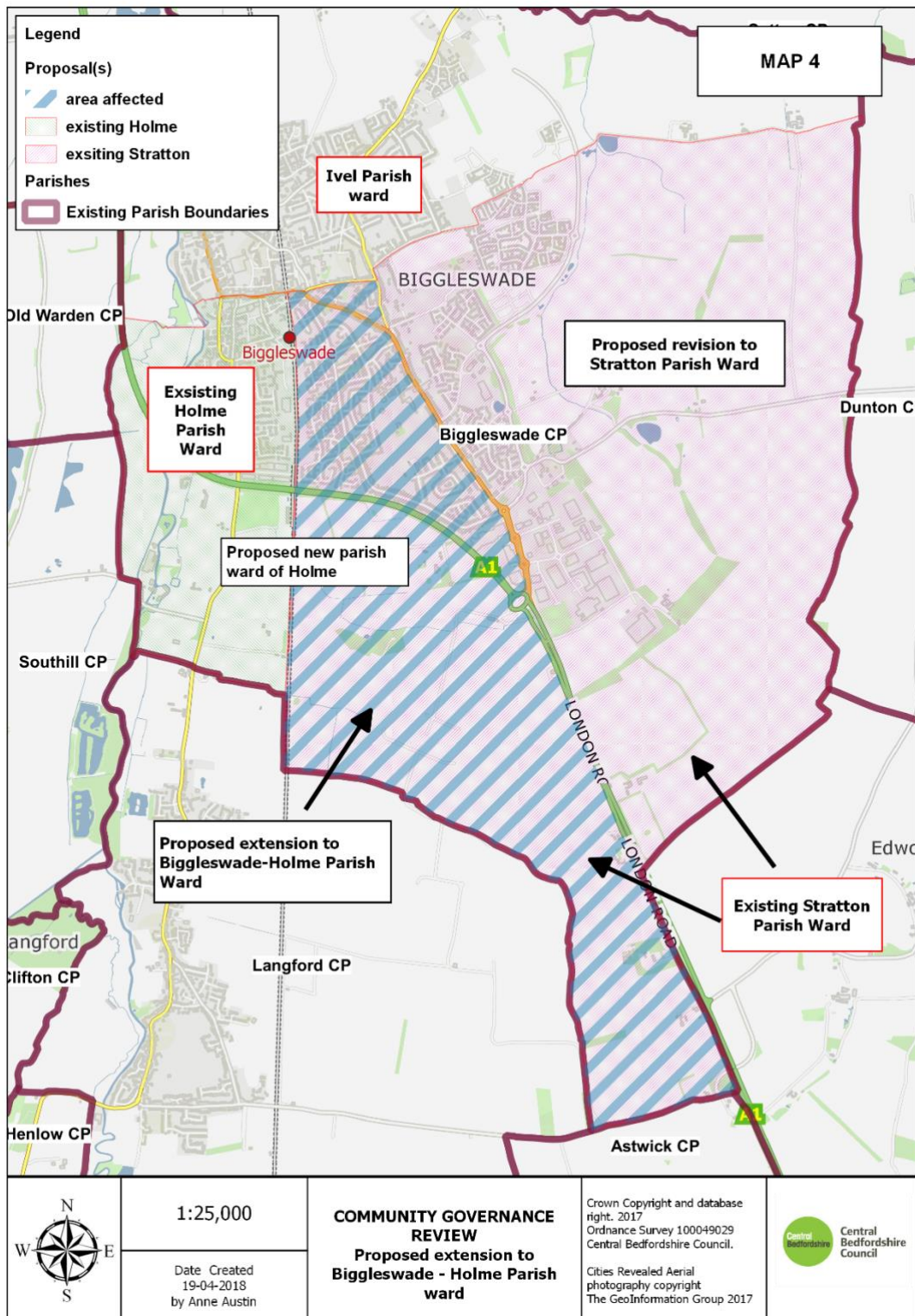
2.2 That the number of parish councillors on Biggleswade Town Council remain unchanged (fifteen) but amended to (Holme ward 5, Ivel ward 5 and Stratton ward 5;

2.3 That the parish ward boundaries, for the parish wards of Holme and Stratton be changed (as shown at map 4) to provide a more equitable ratio of electors to seats; and

2.4 That the parish boundaries between Northill and Biggleswade be redrawn to incorporate the Sainsbury's Supermarket, Tidy Tip and the properties 3 Bells Brook House and Numbers 1 to 18 Riverside Court







# Blunham

## 1 Background

Parish Ward	Seats	1 Sept 2017 Electorate	31 March 2023 Electorate	Ratio Electors to Seats	Forecast Ratio Electors to Seats	Variance from Average
Not Applicable	10	827	1036	83	104	-67%

1.1 Blunham parish has a Parish Council. It is unwarded and has 10 seats on the Council. The forecast development to March 2023 is estimated at a further 123 dwellings.

1.2 The parish boundary adjoins the neighbouring parishes of Moggerhanger, Sandy and Tempsford. The parish, together with the parish of Sandy are coterminous within the district ward of Sandy.

1.3 Neither the Parish Council nor the public submitted a response to the invitation of initial submissions.

1.4 The 2011 and 2015 elections were uncontested with only 4 nominations in 2011 and 9 nominations in 2015. Consequently, it is recommended that the number of councillors be reduced to 7 which would have the effect of increasing the ratio of electors to seats to 148 (-54% variance from average).

1.5 The overall projected electorate growth over 5 years is 25.3%.

1.6 The development 'Old Station Court' in the south of the parish has extended into the parish of Moggerhanger (as shown at Map 5). It is therefore recommended that this anomaly is corrected by formally incorporating the relevant properties into the parish of Blunham.

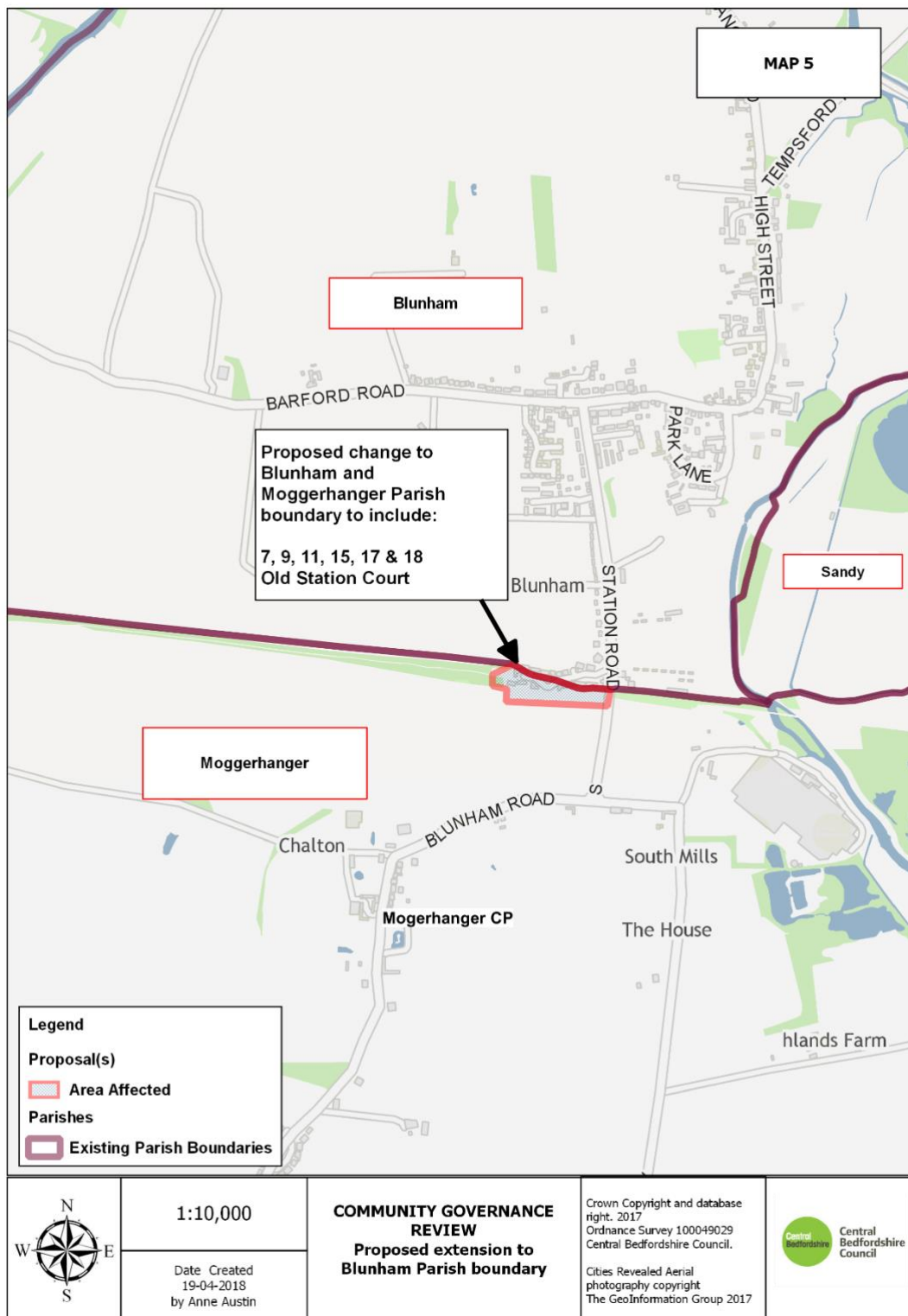
## 2 Draft Recommendations

2.1 That the parish name of Blunham should remain unchanged;

2.2 That the number of parish councillors on Blunham Parish Council be reduced to seven; and

2.3 That the boundary of the parish be changed to incorporate the properties at numbers 7 to 17 (odds) and number 18 Old Station Court.





# Brogborough

## 1 Background

Parish Ward	Seats	1 Sept 2017 Electorate	31 March 2023 Electorate	Ratio Electors to Seats	Variance from Average
Not Applicable	7	276	276	39	-88%

1.1 Brogborough parish has a Parish Council. It is unwarded and has 7 seats on the Council. There is no forecast development to March 2023.

1.2 The parish boundary adjoins the neighbouring parishes of Hulcote & Salford, Husborne Crawley, Lidlington and Ridgmont. The parish, together with the parishes of Cranfield, Hulcote & Salford, Lidlington, Marston Moretaine, Millbrook and Ridgmont are coterminous within the district ward of Cranfield.

1.3 The Parish Council did not submit a response to the invitation of initial submissions. However, the 1 submission from a member of the public suggesting a change to the style of the Council to 'Village' and that the name of the parish be changed to either Brockborough or Badgers Hill can be found at <http://www.centralbedfordshire.gov.uk/council/consultations/results.aspx>

1.4 Whilst the 2011 and 2015 elections were uncontested with 5 nominations in 2011 and only 3 nominations in 2015 the National Association of Local Councils considers that the practical minimum number of parish councillors should be seven.

1.5 The overall projected electorate growth over 5 years is nil.

## 2 Draft Recommendations

2.1 That the parish name of Brogborough should remain unchanged;

2.2 That the number of parish councillors on Brogborough Parish Council remain unchanged (seven); and

2.3 That no change should be made to the parish boundary of Brogborough.

# Caddington

## 1 Background

Parish Ward	Seats	1 Sept 2017 Electorate	31 March 2023 Electorate	Ratio Electors to Seats	Forecast Ratio Electors to Seats	Variance from Average
Not Applicable	10	3209	3675	320	368	+15%

1.1 Caddington parish has a Parish Council. It is unwarded and has 10 seats on the Council. The forecast development to March 2023 is estimated at a further 274 dwellings.

1.2 The parish boundary adjoins the neighbouring parishes of Dunstable, Kensworth and Slip End. The parish, together with the parishes of Hyde, Kensworth, Slip End, Studham and Whipsnade are coterminous within the district ward of Caddington, Hyde and Slip End.

1.3 The Parish Council did not submit a response to the invitation of initial submissions. However, 9 online submissions, requesting no changes to the number of councillors, were received from the public which can be found at <http://www.centralbedfordshire.gov.uk/council/consultations/results.aspx>. Moreover, it should be noted that the submission from Dunstable Town Council to extend the parish boundary of Dunstable to incorporate the anomaly of numbers 19 to 73 (odds) Norfolk Road together with the new development at the former Empire Rubber Company site was considered to have merit (as shown at Map 6).

1.4 Whilst the 2011 elections were contested with 15 nominations and the 2015 elections were uncontested with only 7 nominations it is not considered appropriate to recommend changes to the number of parish councillors at this time due to the substantial development taking place in the next 5 years.

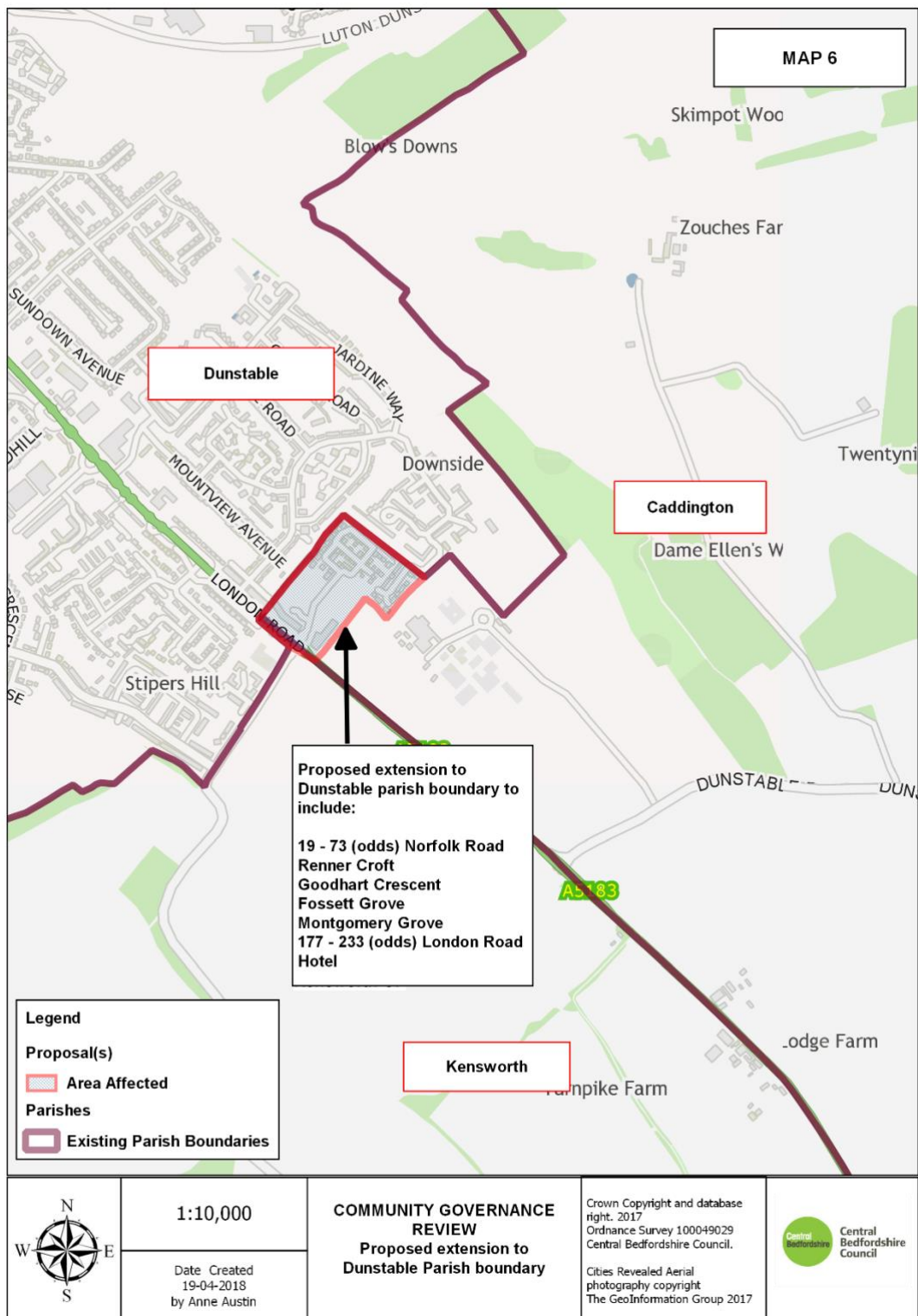
1.5 The overall projected electorate growth over 5 years is 14.5%.

## 2 Draft Recommendations

2.1 That the parish name of Caddington should remain unchanged;

2.2 That the number of parish councillors on Caddington Parish Council remain unchanged (ten); and

2.3 That the boundary of the parish be changed to remove the properties at Numbers 19 to 73 (odds) Norfolk Road together with the properties at Fossett Grove, Goodhart Crescent, Montgomery Grove, Renner Croft and Numbers 177 to 233 (odds) London Road.



# Campton & Chicksands

## 1 Background

Parish Ward	Seats	1 Sept 2017 Electorate	31 March 2023 Electorate	Ratio Electors to Seats	Forecast Ratio Electors to Seats	Variance from Average
Not Applicable	7	1204	1207	172	172	-46%

1.1 Campton & Chicksands parish has a Parish Council. It is unwarded and has 7 seats on the Council. The forecast development to March 2023 is estimated at a further 2 dwellings.

1.2 The parish boundary adjoins the neighbouring parishes of Clophill, Gravenhurst, Haynes, Meppershall, Shefford and Southill. The parish, together with the parishes of Meppershall and Shefford are coterminous within the district ward of Shefford.

1.3 Neither the Parish Council nor the public submitted a response to the invitation of initial submissions.

1.4 Whilst the 2011 and 2015 elections were uncontested with 4 nominations in 2011 and only 3 nominations in 2015 the National Association of Local Councils considers that the practical minimum number of parish councillors should be seven.

1.5 The overall projected electorate growth over 5 years is 0.2%.

## 2 Draft Recommendations

2.1 That the parish name of Campton & Chicksands should remain unchanged;

2.2 That the number of parish councillors on Campton & Chicksands Parish Council remain unchanged (seven); and

2.3 That no change should be made to the parish boundary of Campton and Chicksands.

# Chalgrave

## 1 Background

Parish Ward	Seats	1 Sept 2017 Electorate	31 March 2023 Electorate	Ratio Electors to Seats	Forecast Ratio Electors to Seats	Variance from Average
Not Applicable	7	397	399	57	57	-82%

1.1 Chalgrave parish has a Parish Council. It is unwarded and has 7 seats on the Council. The forecast development to March 2023 is estimated at a further 1 dwelling.

1.2 The parish boundary adjoins the neighbouring parishes of Battlesden, Chalton, Hockliffe, Houghton Regis, Tilsworth and Toddington. The parish, together with the parishes of Eggington, Heath & Reach, Hockliffe, Stanbridge and Tilsworth are coterminous within the district ward of Heath & Reach.

1.3 Neither the Parish Council nor the public submitted a response to the invitation of initial submissions.

1.4 Whilst the 2011 and 2015 elections were uncontested with 6 nominations in 2011 and 6 nominations in 2015 the National Association of Local Councils considers that the practical minimum number of parish councillors should be seven.

1.5 The overall projected electorate growth over 5 years is 0.5%.

## 2 Draft Recommendations

2.1 That the parish name of Chalgrave should remain unchanged;

2.2 That the number of parish councillors on Chalgrave Parish Council remain unchanged (seven); and

2.3 That no change should be made to the parish boundary of Chalgrave.

## Chalton

### 1 Background

Parish Ward	Seats	1 Sept 2017 Electorate	31 March 2023 Electorate	Ratio Electors to Seats	Forecast Ratio Electors to Seats	Variance from Average
Not Applicable	7	464	471	66	67	-79%

1.1 Chalton parish has a Parish Council. It is unwarded and has 7 seats on the Council. The forecast development to March 2023 is estimated at a further 4 dwellings.

1.2 The parish boundary adjoins the neighbouring parishes of Chalgrave, Houghton Regis, Sundon and Toddington. The parish, together with the parishes of Harlington, Streatley, Sundon, and Toddington are coterminous within the district ward of Toddington.

1.3 The submission from the Parish Council recommended that no changes be made and there were no responses from the public.

1.4 Whilst the 2011 and 2015 elections were uncontested with 3 nominations in 2011 and 6 nominations in 2015 the National Association of Local Councils considers that the practical minimum number of parish councillors should be seven.

1.5 The overall projected electorate growth over 5 years is 1.5%.

### 2 Draft Recommendations

2.1 That the parish name of Chalton should remain unchanged;

2.2 That the number of parish councillors on Chalton Parish Council remain unchanged (seven); and

2.3 That no change should be made to the parish boundary of Chalton.

# Clifton

## 1 Background

Parish Ward	Seats	1 Sept 2017 Electorate	31 March 2023 Electorate	Ratio Electors to Seats	Forecast Ratio Electors to Seats	Variance from Average
Not Applicable	12	2595	2838	216	237	-26%

1.1 Clifton parish has a Parish Council. It is unwarded and has 12 seats on the Council. The forecast development to March 2023 is estimated at a further 143 dwellings.

1.2 The parish boundary adjoins the neighbouring parishes of Henlow, Langford, Meppershall, Shefford and Southill. The parish, together with the parishes of Arlesey, Henlow and Stondon are coterminous within the district ward of Arlesey.

1.3 The Parish Council did not submit a response to the invitation of initial submissions. However the submission from Henlow Parish Council to adjust the ward boundary to include the whole of the airfield in Henlow parish together with, 3 submissions that were received from the public which recommended no changes can be found at

<http://www.centralbedfordshire.gov.uk/council/consultations/results.aspx> It should be noted that the submission from Henlow Parish Council was rejected on the grounds that such a change would be contrary to the Terms of Reference

1.4 The submissions from the Shefford Town Council and a CBC Shefford ward councillor to extend the Shefford parish boundary can also be found at <http://www.centralbedfordshire.gov.uk/council/consultations/results.aspx> However, both submissions were rejected as being contrary to the Terms of Reference.

1.5 The 2011 and 2015 elections were uncontested with 11 nominations in 2011 and 11 nominations in 2015. Consequently, and notwithstanding the 3 submissions from the public to retain the current number of councillors, it is recommended that the number of councillors be reduced to 10 which would have the effect of increasing the ratio of electors to seats to 284 (-11% variance from average)

1.6 The overall projected electorate growth over 5 years is 9.4%

## 2 Draft Recommendations

2.1 That the parish name of Clifton should remain unchanged;

2.2 That the number of parish councillors on Clifton Parish Council be reduced to ten; and

2.3 That no change should be made to the parish boundary of Clifton.



# Clophill

## 1 Background

Parish Ward	Seats	1 Sept 2017 Electorate	31 March 2023 Electorate	Ratio Electors to Seats	Forecast Ratio Electors to Seats	Variance from Average
Not Applicable	10	1420	1444	142	144	-55%

1.1 Clophill parish has a Parish Council. It is unwarded and has 10 seats on the Council. The forecast development to March 2023 is estimated at a further 14 dwellings.

1.2 The parish boundary adjoins the neighbouring parishes of Campton & Chicksands, Gravenhurst, Haynes, Maulden and Silsoe. The parish, together with the parishes of Ampthill and Maulden are coterminous within the district ward of Ampthill.

1.3 Neither the Parish Council nor the public submitted a response to the invitation of initial submissions.

1.4 The 2011 elections were uncontested with 10 nominations. However, the 2015 elections were contested with 13 nominations. Nevertheless, it is recommended that the number of councillors be reduced to 7 which would have the effect of increasing the ratio of electors to seats to 206 (-35% variance from average).

1.5 The overall projected electorate growth over 5 years is 1.7%.

## 2 Draft Recommendations

2.1 That the parish name of Clophill should remain unchanged;

2.2 That the number of parish councillors on Clophill Parish Council be reduced to seven; and

2.3 That no change should be made to the parish boundary of Clophill.

# Cranfield

## 1 Background

Parish Ward	Seats	1 Sept 2017 Electorate	31 March 2023 Electorate	Ratio Electors to Seats	Forecast Ratio Electors to Seats	Variance from Average
Cranfield	13	3673	4416	283	340	+7%
Wharley End	2	145	145	73	73	-77%

1.1 Cranfield parish has a Parish Council and is currently divided into 2 wards. Cranfield with 13 councillors and Wharley End with 2 councillors. The forecast development to March 2023 is estimated at a further 437 dwellings.

1.2 The parish boundary adjoins the neighbouring parishes of Hulcote & Salford and Marston Moretaine. The parish, together with the parishes of Brogborough, Hulcote & Salford, Lidlington, Millbrook, Marston Moretaine and Ridgmont are coterminous within the district ward of Cranfield.

1.3 The Parish Council did not submit a response to the invitation of initial submissions. However, 2 submissions were received from the public which can be found at <http://www.centralbedfordshire.gov.uk/council/consultations/results.aspx>. It is considered that the submission from the member of the public who suggested that the ward of Wharley End should be abolished has merit given the shortfall of candidates in both 2011 and 2015.

1.4 The 2011 and the 2015 elections for the Cranfield ward were uncontested with 10 nominations on each occasion. The Wharley End ward was also uncontested in both 2011 and 2015 with 2 nominations in 2011 but none in 2015. Consequently, and notwithstanding the 2 submissions from the public to retain the current number of councillors, it is recommended that the ward of Wharley End be abolished and the number of councillors be reduced to 13 which would have the effect of increasing the ratio of electors to seats to 351 (+10% variance from average).

1.5 The overall projected electorate growth over 5 years is 19.5%.

## 2 Draft Recommendations

2.1 That the parish name of Cranfield should remain unchanged;

2.2 That the ward of Cranfield Wharley End be abolished;

2.3 That the number of parish councillors on Cranfield Parish Council be reduced to thirteen; and

2.3 That no change should be made to the parish boundary of Cranfield.

# Dunstable

## 1 Background

Parish Ward	Seats	1 Sept 2017 Electorate	31 March 2023 Electorate	Ratio Electors to Seats	Forecast Ratio Electors to Seats	Variance from Average
Central	3	3775	3819	1258	1273	+299%
Icknield	5	6344	6847	1268	1369	+329%
Manshead	3	3883	3883	1294	1294	+306%
Northfields	5	7451	7777	1490	1555	+388%
Watling	5	7739	7739	1548	1548	+385%

1.1 Dunstable parish has a Town Council and is currently divided into 5 wards. Both the Central and Manshead wards have 3 councillors and the wards of Icknield, Northfields and Watling have 5 councillors each. The forecast development to March 2023 is estimated at a further 514 dwellings.

1.2 The parish boundary adjoins the neighbouring parishes of Caddington, Houghton Regis, Kensworth and Totternhoe. The parish wards are coterminous within the 5 district wards of the same names.

1.3 The submission from the Town Council to reduce the number of councillors from 21 to 18 together with the proposal to extend the boundaries to the north, and south can be found on <http://www.centralbedfordshire.gov.uk/council/consultations/results.aspx> Further submissions from both the public and interested parties can also be seen via the same link. The proposed extension to the parish boundary to incorporate the anomaly of numbers 19 to 73 (odds) Norfolk Road and the new development at the former Empire Rubber Company site which are currently within the Caddington parish boundary is considered both practical and reasonable (map 6 refers). However, the proposal to extend into several fields in the northern quarter of Kensworth parish was rejected as it was considered contrary to the Terms of Reference. The proposal to extend the northern boundary to incorporate the hamlet of Sewell (currently within the parish of Houghton Regis) within the parish (16 properties and 39 electors) was also rejected on the grounds that it was not an anomalous development that straddled the two parish boundaries and therefore was contrary to the Terms of Reference.

1.4 The submissions from Totternhoe Parish Council to extend its boundaries into Dunstable can also be found at <http://www.centralbedfordshire.gov.uk/council/consultations/results.aspx> However, the proposal was rejected as being contrary to the Terms of Reference.

1.5 The development in Portland Ride built in the late 1990s extended across the parish boundary from Houghton Regis to Dunstable (as shown at map 7). It is therefore recommended that this anomaly is corrected by formally moving the relevant properties, Numbers 21 to 33 Portland Ride into the parish of Houghton Regis.

1.6 Although the 2011 elections were contested in all 5 wards with 7 nominations for Central, 11 for Icknield, 9 for Manshead, 16 for Northfields and 11 for Watling and the 2015 elections were equally as competitive with 7 nominations for Central, 13 for Icknield, 9 for Manshead, 16 for Northfields and 13 for Watling it is noted that the submissions from both the Town Council and some members of the public that the number of councillors be reduced, is consistent with government advice that the conduct of parish council business does not usually require a large body of councillors.

1.7 The overall projected electorate growth over 5 years for the Central ward is 1.2%; for the Icknield ward 7.9% and 4.4% for the Northfields ward. No projected electorate growth over the 5 years is planned for the wards of Manshead and Watling.

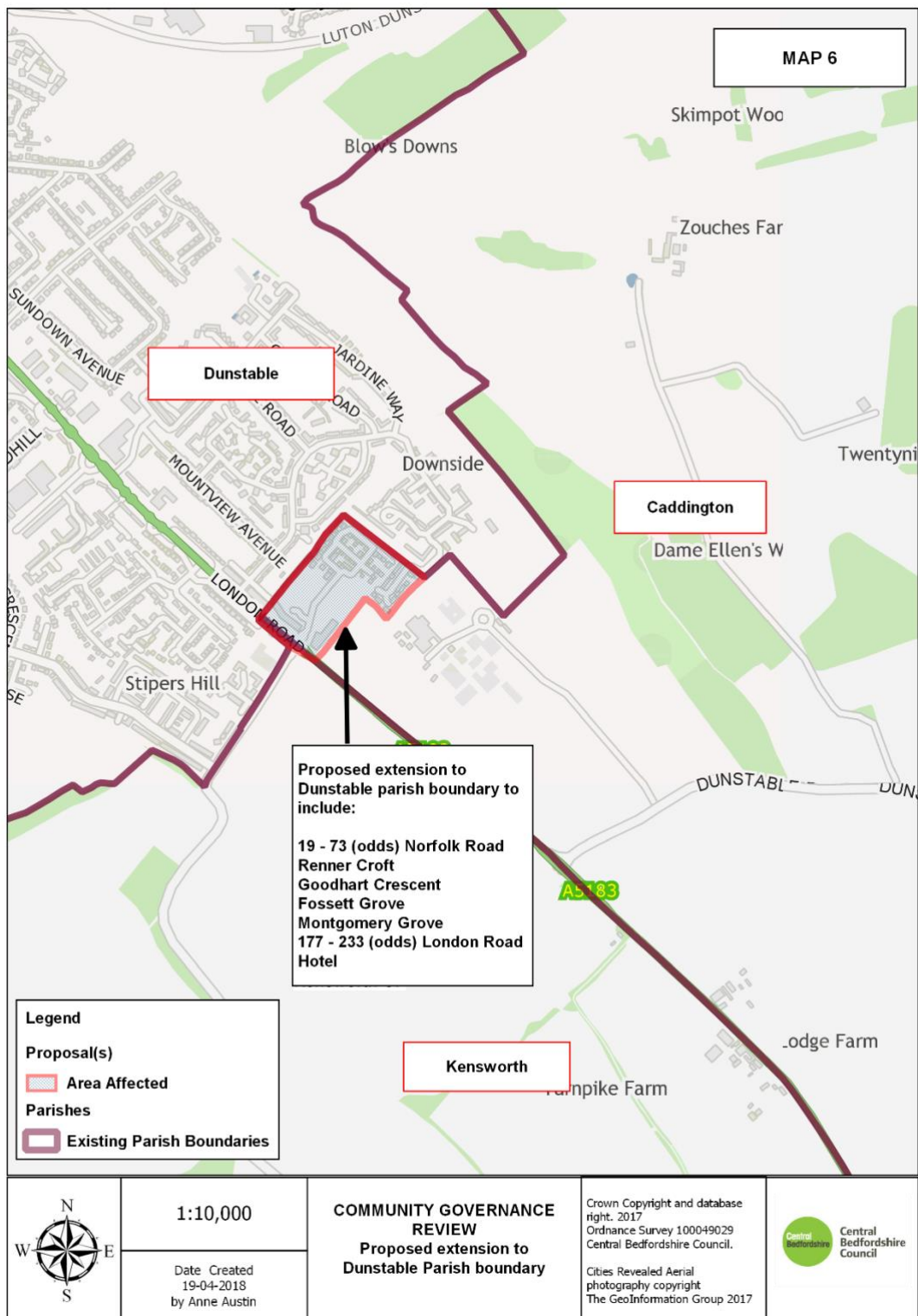
## **2 Draft Recommendations**

2.1 That the parish name of Dunstable should remain unchanged;

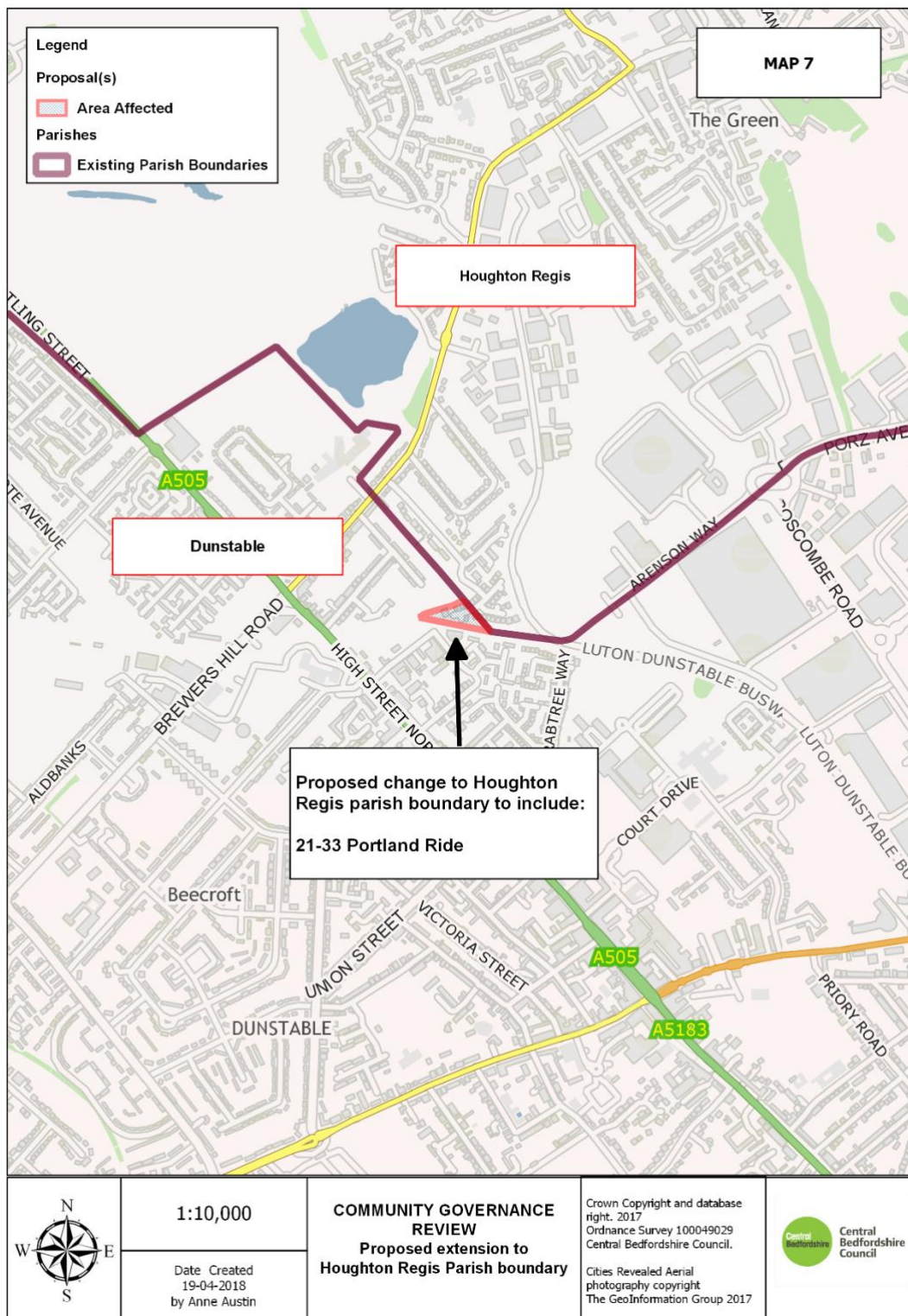
2.2 That the number of parish councillors on Dunstable Town Council be reduced to eighteen (Central Ward 3, Icknield Ward 4, Manshead Ward 3, Northfields Ward 4 and Watling Ward 4);

2.3 That the boundary of the parish be changed to add the properties at Numbers 19 to 73 (odds) Norfolk Road together with the properties at Fossett Grove, Goodhart Crescent, Montgomery Grove, Renner Croft and Numbers 177 to 233 (odds) London Road;

2.4 That the boundary of the parish be changed to effect the removal of the properties at Numbers 21 to 33 Portland Ride.







## Dunton

### 1 Background

Parish Ward	Seats	1 Sept 2017 Electorate	31 March 2023 Electorate	Ratio Electors to Seats	Forecast Ratio Electors to Seats	Variance from Average
Not Applicable	7	560	562	80	80	-75%

1.1 Dunton parish has a Parish Council. It is unwarded and has 7 seats on the Council. The forecast development to March 2023 is estimated at a further 1 dwelling.

1.2 The parish boundary adjoins the neighbouring parishes of Biggleswade, Edworth, Eyeworth and Sutton. The parish, together with the parishes of Edworth, Everton, Eyeworth, Tempsford, Potton, Sutton and Wrestlingworth & Cockayne Hatley are coterminous within the district ward of Potton.

1.3 Neither the Parish Council nor the public submitted a response to the invitation of initial submissions.

1.4 Whilst the 2011 and 2015 elections were uncontested with 4 nominations in 2011 and 7 nominations in 2015 the National Association of Local Councils considers that the practical minimum number of parish councillors should be seven.

1.5 The overall projected electorate growth over 5 years is 0.36%.

### 2 Draft Recommendations

2.1 That the parish name of Dunton should remain unchanged;

2.2 That the number of parish councillors on Dunton Parish Council remain unchanged (seven); and

2.3 That no change should be made to the parish boundary of Dunton.

## Eaton Bray

### 1 Background

Parish Ward	Seats	1 Sept 2017 Electorate	31 March 2023 Electorate	Ratio Electors to Seats	Forecast Ratio Electors to Seats	Variance from Average
Not Applicable	9	2129	2144	237	238	-25%

1.1 Eaton Bray parish has a Parish Council. It is unwarded and has 9 seats on the Council. The forecast development to March 2023 is estimated at a further 9 dwellings.

1.2 The parish boundary adjoins the neighbouring parishes of Great Billington, Stanbridge, Totternhoe and Whipsnade. The parish, together with the parishes of Great Billington and Totternhoe are coterminous within the district ward of Eaton Bray.

1.3 The Parish Council did not submit a response to the invitation of initial submissions. However, 2 online responses were received from the public which can be found at <http://www.centralbedfordshire.gov.uk/council/consultations/results.aspx>.

1.4 The 2011 and 2015 elections were uncontested with only 4 nominations in 2011 and 7 nominations in 2015. Consequently, and notwithstanding the 2 submissions from the public to retain the current number of councillors, it is recommended that the number of councillors be reduced to 7 which would have the effect of increasing the ratio of electors to seats to 306 (-4% variance from average).

1.5 The overall projected electorate growth over 5 years is 0.7%.

### 2 Draft Recommendations

2.1 That the parish name of Eaton Bray should remain unchanged;

2.2 That the number of parish councillors on Eaton Bray Parish Council be reduced to seven; and

2.3 That no change should be made to the parish boundary of Eaton Bray.



## Edworth

### 1 Background

Parish Ward	Seats	1 Sept 2017 Electorate	31 March 2023 Electorate	Ratio Electors to Seats	Variance from Average
Not Applicable	N/A	57	57	N/A	

1.1 Edworth is one of the seven parishes which do not have a Council but meets as a parish meeting.

1.2 The parish boundary adjoins the neighbouring parishes of Astwick, Bigglewade and Dunton. The parish, together with the parishes of Dunton, Everton, Eyeworth, Tempsford, Potton, Sutton and Wrestlingworth & Cockayne Hatley are coterminous within the district ward of Potton.

1.3 The Parish Meeting nor the public submitted a response to the invitation of initial submissions.

1.4 There are only 30 properties and 57 electors in the parish and there is no anticipated growth over the next 5 years. The parish operates as a parish meeting and has a relatively strong sense of identity.

1.5 The overall projected electorate growth over 5 years is nil.

### 2 Draft Recommendations

2.1 That the parish name of Edworth should remain unchanged;

2.2 That the parish should not have a parish council; and

2.3 That no change should be made to the parish boundary of Edworth.

# Eggington

## 1 Background

Parish Ward	Seats	1 Sept 2017 Electorate	31 March 2023 Electorate	Ratio Electors to Seats	Forecast Ratio Electors to Seats	Variance from Average
Not Applicable	7	245	585	35	84	-74%

1.1 Eggington parish has a Parish Council. It is unwarded and has 7 seats on the Council. The forecast development to March 2023 is estimated at a further 200 dwellings.

1.2 The parish boundary adjoins the neighbouring parishes of Heath & Reach, Hockliffe, Leighton-Linslade and Stanbridge. The parish, together with the parishes of Chalgrave, Heath & Reach, Hockliffe, Stanbridge and Tilsworth are coterminous within the district ward of Heath & Reach.

1.3 Neither the Parish Council nor the public submitted a response to the invitation of initial submissions.

1.4 Whilst the 2011 and 2015 elections were uncontested with only 2 nominations in 2011 and 7 nominations in 2015 the National Association of Local Councils considers that the practical minimum number of parish councillors should be seven.

1.5 Clearly the doubling in size of the electorate in the next 5 years will have a major impact on the parish. However, a review of the affected area of the parish is not considered appropriate at this time. Moreover, it should be noted that in the case of Offerton Park Parish Council v Stockport Borough Council (2011), the High Court held that a decision to abolish a Parish Council should be overturned as the Council had not had proper regard to the material consideration that the majority of the electorate had not expressed an opinion.

1.6 The overall projected electorate growth over 5 years is 138.8%.

## 2 Draft Recommendations

2.1 That the parish name of Eggington should remain unchanged;

2.2 That the number of parish councillors on Eggington Parish Council remain unchanged (seven);

2.3. That a further governance review of the parish be held when a substantial number of the proposed development has taken place; and

2.4 That no change should be made to the parish boundary of Eggington.

# Eversholt

## 1 Background

Parish Ward	Seats	1 Sept 2017 Electorate	31 March 2023 Electorate	Ratio Electors to Seats	Forecast Ratio Electors to Seats	Variance from Average
Not Applicable	7	352	357	50	51	-84%

1.1 Eversholt parish has a Parish Council. It is unwarded and has 7 seats on the Council. The forecast development to March 2023 is estimated at a further 3 dwellings

1.2 The parish boundary adjoins the neighbouring parishes of Flitwick, Milton Bryan, Ridgmont, Steppingley, Tingrith and Woburn. The parish, together with the parishes of Aspley Guise, Aspley Heath, Battlesden, Husborne Crawley, Milton Bryan, Potsgrove and Woburn are coterminous within the district ward of Aspley & Woburn.

1.3 Neither the Parish Council nor the public submitted a response to the invitation of initial submissions.

1.4 Whilst the 2011 and 2015 elections were uncontested with 5 nominations in 2011 and 7 nominations in 2015 the National Association of Local Councils considers that the practical minimum number of parish councillors should be seven.

1.5 The overall projected electorate growth over 5 years is 1.4%.

## 2 Draft Recommendations

2.1 That the parish name of Eversholt should remain unchanged;

2.2 That the number of parish councillors on Eversholt Parish Council remain unchanged (seven); and

2.3 That no change should be made to the parish boundary of Eversholt.

## Everton

### 1 Background

Parish Ward	Seats	1 Sept 2017 Electorate	31 March 2023 Electorate	Ratio Electors to Seats	Forecast Ratio Electors to Seats	Variance from Average
Not Applicable	7	402	412	57	59	-82%

1.1 Everton parish has a Parish Council. It is unwarded and has 7 seats on the Council. The forecast development to March 2023 is estimated at a further 7 dwellings.

1.2 The parish boundary adjoins the neighbouring parishes of Potton, Sandy Tempsford. The parish, together with the parishes of Dunton, Edworth, Eyeworth, Tempsford, Potton, Sutton and Wrestlingworth & Cockayne Hatley are coterminous within the district ward of Potton.

1.3 The Parish Council did not submit a response to the invitation of initial submissions. However, 1 online response was received from the public which recommended no changes can be found at <http://www.centralbedfordshire.gov.uk/council/consultations/results.aspx>.

1.4 Whilst the 2011 elections were uncontested with 6 nominations and the 2015 elections were contested with 9 nominations the National Association of Local Councils considers that the practical minimum number of parish councillors should be seven.

1.5 The overall projected electorate growth over 5 years is 2.5%.

### 2 Draft Recommendations

2.1 That the parish name of Everton should remain unchanged;

2.2 That the number of parish councillors on Everton Parish Council remain unchanged (seven); and

2.3 That no change should be made to the parish boundary of Everton.

# Eyeworth

## 1 Background

Parish Ward	Seats	1 Sept 2017 Electorate	31 March 2023 Electorate	Ratio Electors to Seats	Variance from Average
Not Applicable	N/A	69	69	N/A	

1.1 Eyeworth is one of the seven parishes which do not have a Council but meets as a parish meeting.

1.2 The parish boundary adjoins the neighbouring parishes of Dunton, Sutton and Wrestlingworth & Cockayne Hatley. The parish, together with the parishes of Dunton, Edworth, Everton, Tempsford, Potton, Sutton and Wrestlingworth & Cockayne Hatley are coterminous within the district ward of Potton.

1.3 The Parish Meeting nor the public submitted a response to the invitation of initial submissions.

1.4 There are only 37 properties and 69 electors in the parish and there is no anticipated growth over the next 5 years. The parish operates as a parish meeting and has a relatively strong sense of identity.

1.5 The overall projected electorate growth over 5 years is nil.

## 2 Draft Recommendations

2.1 That the parish name of Eyeworth should remain unchanged;

2.2 That the parish should not have a parish council; and

2.3 That no change should be made to the parish boundary of Eyeworth.

## Fairfield

### 1 Background

Parish Ward	Seats	1 Sept 2017 Electorate	31 March 2023 Electorate	Ratio Electors to Seats	Forecast Ratio Electors to Seats	Variance from Average
Not Applicable	7	1915	2377	274	340	+7%

1.1 Fairfield has a Parish Council which was formed in April 2013. It is unwarded and has 7 seats on the Council. The forecast development to March 2023 is estimated at a further 272 dwellings.

1.2 The parish boundary adjoins the neighbouring parishes of Arlesey and Stotfold. The parish, together with the parishes of Astwick, Langford and Stotfold are coterminous within the district ward of Stotfold & Langford.

1.3 There were no responses from the public to the invitation of initial submissions. However, the submission from the Parish Council to increase the number of councillors from 7 to 9 together with the proposal to change the style to 'Village Council' and to extend the boundary can be found on <http://www.centralbedfordshire.gov.uk/council/consultations/results.aspx> It should be noted that the extension cannot be considered as part of this review as the proposed change would require an alteration to the Central Bedfordshire Council's external boundary; which is not admissible.

1.4 There is no legislative guidance with regard to the ideal number of parish councillors and there is no legal sliding scale and whilst the 2013 and 2015 elections were contested with 10 nominations in 2013 and 8 nominations in 2015 it is considered that the practical minimum number of parish councillors should remain at seven.

1.5 The overall projected electorate growth over 5 years is 24.1%.

### 2 Draft Recommendations

2.1 That the parish name of Fairfield should remain unchanged;

2.2 That the parish style is changed to Fairfield Village Council;

2.3 That the number of parish councillors on Fairfield Village Council remain unchanged (seven); and

2.4 That no change should be made to the parish boundary of Fairfield.

## Flitton and Greenfield

### 1 Background

Parish Ward	Seats	1 Sept 2017 Electorate	31 March 2023 Electorate	Ratio Electors to Seats	Forecast Ratio Electors to Seats	Variance from Average
Flitton	5	555	577	111	115	-64%
Greenfield	5	596	596	119	119	-62%

1.1 Flitton and Greenfield parish has a Parish Council and is currently divided into 2 wards. Flitton ward with 5 councillors and Greenfield ward with 5 councillors. The forecast development to March 2023 is estimated at a further 13 dwellings in the Flitton ward and none in the Greenfield ward.

1.2 The parish boundary adjoins the neighbouring parishes of Flitwick, Maulden, Pulloxhill, Silsoe and Westoning. The parish, together with the parishes of Pulloxhill, Tingrith and Westoning are coterminous within the district ward of Westoning, Flitton & Greenfield.

1.3 Neither the Parish Council nor the public submitted a response to the invitation of initial submissions.

1.4 The 2011 elections in the Flitton ward were contested with 7 nominations. However, the 2015 elections were uncontested with 5 nominations. For the ward of Greenfield, the elections in both 2011 and 2015 were uncontested with 5 nominations in 2011 and 4 in 2015. Consequently, it is recommended that the number of councillors be reduced to 8 which would have the effect of increasing the ratio of electors to seats to 144 in the Flitton ward (-55% variance from average) and 149 in the Greenfield ward (-53% variance from average).

1.5 The overall projected electorate growth over 5 years is 3.9% in the Flitton ward with nil growth in the Greenfield ward.

### 2 Draft Recommendations

2.1 That the parish names of Flitton and Greenfield should remain unchanged;

2.2 That the number of parish councillors on Flitton and Greenfield Parish Council be reduced to eight (Flitton ward 4 and Greenfield ward 4); and

2.3 That no change should be made to the parish boundary of Flitton and Greenfield.

# Flitwick

## 1 Background

Parish Ward	Seats	1 Sept 2017 Electorate	31 March 2023 Electorate	Ratio Electors to Seats	Forecast Ratio Electors to Seats	Variance from Average
East	7	4539	4624	648	661	+107%
West	10	5788	6409	579	641	+101%

1.1 Flitwick parish has a Town Council and is currently divided into 2 wards. East ward with 7 councillors and West ward with 10 councillors. The forecast development to March 2023 is estimated at a further 50 dwellings in East ward and a further 365 dwellings in West ward.

1.2 The parish boundary adjoins the neighbouring parishes of Ampthill, Eversholt, Flitton & Greenfield, Maulden, Steppingley, Tingrith and Westoning. The parish, together with the parish of Steppingley are coterminous within the district ward of Flitwick.

1.3 The Town Council did not submit a response to the invitation of initial submissions. However, 5 online responses were received from the public which can be found at <http://www.centralbedfordshire.gov.uk/council/consultations/results.aspx>.

1.4 The 2011 elections in the East ward were uncontested with 7 nominations. However, the 2015 elections were contested with 11 nominations. For the West ward, the 2011 elections were contested with 12 nominations but uncontested in the 2015 elections with 10 nominations. Nevertheless, and notwithstanding the mixed submissions from the public to review the current number of councillors, no changes to the number of parish councillors is recommended at this time.

1.5 The overall projected electorate growth over 5 years is 1.9% for East ward and 10.7% for West ward.

## 2 Draft Recommendations

- 2.1 That the parish name of Flitwick should remain unchanged;
- 2.2 That the number of parish councillors on Flitwick Town Council remain unchanged (seventeen); and
- 2.3 That no change should be made to the parish boundary of Flitwick.



# Gravenhurst

## 1 Background

Parish Ward	Seats	1 Sept 2017 Electorate	31 March 2023 Electorate	Ratio Electors to Seats	Forecast Ratio Electors to Seats	Variance from Average
Not Applicable	7	462	503	66	72	-77%

1.1 Gravenhurst parish has a Parish Council. It is unwarded and has 7 seats on the Council. The forecast development to March 2023 is estimated at a further 24 dwellings

1.2 The parish boundary adjoins the neighbouring parishes of Campton & Chicksands, Clophill, Meppershall, Shillington and Silsoe. The parish, together with the parishes of Shillington and Silsoe are coterminous within the district ward of Silsoe & Shillington.

1.3 Neither the Parish Council nor the public submitted a response to the invitation of initial submissions.

1.4 Whilst the 2011 and 2015 elections were uncontested with 6 nominations in 2011 and 5 nominations in 2015 the National Association of Local Councils considers that the practical minimum number of parish councillors should be seven.

1.5 The overall projected electorate growth over 5 years is 8.9%.

## 2 Draft Recommendations

2.1 That the parish name of Gravenhurst should remain unchanged;

2.2 That the number of parish councillors on Gravenhurst Parish Council remain unchanged (seven); and

2.3 That no change should be made to the parish boundary of Gravenhurst.

# Great Billington

## 1 Background

Parish Ward	Seats	1 Sept 2017 Electorate	31 March 2023 Electorate	Ratio Electors to Seats	Forecast Ratio Electors to Seats	Variance from Average
Not Applicable	7	280	285	40	41	-87%

1.1 Great Billington parish has a Parish Council. It is unwarded and has 7 seats on the Council. The forecast development to March 2023 is estimated at a further 3 dwellings

1.2 The parish boundary adjoins the neighbouring parishes of Eaton Bray, Leighton Linlade and Stanbridge. The parish, together with the parishes of Eaton Bray and Totternhoe are coterminous within the district ward of Eaton Bray.

1.3 There were no responses from the public to the invitation of initial submissions. However, the submission from the Parish Council to change the name of the parish to Billington can be found on <http://www.centralbedfordshire.gov.uk/council/consultations/results.aspx>

1.4 Whilst the 2011 and 2015 elections were uncontested with 3 nominations in 2011 and 5 nominations in 2015 the National Association of Local Councils considers that the practical minimum number of parish councillors should be seven.

1.5 The overall projected electorate growth over 5 years is 1.8%.

## 2 Draft Recommendations

2.1 That the parish name of Great Billington be changed to Billington;

2.2 That the number of parish councillors on Billington Council remain unchanged (seven); and

2.3 That no change should be made to the parish boundary of Billington.

# Harlington

## 1 Background

Parish Ward	Seats	1 Sept 2017 Electorate	31 March 2023 Electorate	Ratio Electors to Seats	Forecast Ratio Electors to Seats	Variance from Average
Not Applicable	12	1832	1857	153	155	-51%

1.1 Harlington parish has a Parish Council. It is unwarded and has 12 seats on the Council. The forecast development to March 2023 is estimated at a further 15 dwellings.

1.2 The parish boundary adjoins the neighbouring parishes of Streatley, Sundon, Toddington and Westoning. The parish, together with the parishes of Chalton, Streatley, Sundon and Toddington are coterminous within the district ward of Toddington.

1.3 The Parish Council did not submit a response to the invitation of initial submissions. However, 4 online responses were received from the public which can be found at <http://www.centralbedfordshire.gov.uk/council/consultations/results.aspx>.

1.4 The 2011 and 2015 elections were uncontested with 9 nominations in 2011 and 8 nominations in 2015. Consequently, and notwithstanding that 3 of the 4 submissions from the public to retain the current number of councillors, it is recommended that the number of councillors be reduced to 7 which would have the effect of increasing the ratio of electors to seats to 265 (-17% variance from average).

1.5 The overall projected electorate growth over 5 years is 1.4%.

## 2 Draft Recommendations

2.1 That the parish name of Harlington should remain unchanged;

2.2 That the number of parish councillors on Harlington Parish Council be reduced to seven; and

2.3 That no change should be made to the parish boundary of Harlington.

# Haynes

## 1 Background

Parish Ward	Seats	1 Sept 2017 Electorate	31 March 2023 Electorate	Ratio Electors to Seats	Forecast Ratio Electors to Seats	Variance from Average
Not Applicable	10	995	997	100	100	-69%

1.1 Haynes parish has a Parish Council. It is unwarded and has 10 seats on the Council. The forecast development to March 2023 is estimated at a further 1 dwelling.

1.2 The parish boundary adjoins the neighbouring parishes of Campton & Chicksands, Clophill, Houghton Conquest Maulden. The parish, together with the parish of Houghton Conquest are coterminous within the district ward of Houghton Conquest & Haynes.

1.3 The Parish Council did not submit a response to the invitation of initial submissions. However, 2 online responses were received from the public which can be found at <http://www.centralbedfordshire.gov.uk/council/consultations/results.aspx>.

1.4 The 2011 elections were contested with 12 nominations. However, the 2015 elections were uncontested with 9 nominations. Consequently, and notwithstanding the 2 submissions from the public to retain the current number of councillors, it is recommended that the number of councillors be reduced to 7 which would have the effect of increasing the ratio of electors to seats to 142 (-55% variance from average).

1.5 The overall projected electorate growth over 5 years is 0.2%.

## 2 Draft Recommendations

2.1 That the parish name of Haynes should remain unchanged;

2.2 That the number of parish councillors on Haynes Parish Council be reduced to seven; and

2.3 That no change should be made to the parish boundary of Haynes.

## Heath & Reach

### 1 Background

Parish Ward	Seats	1 Sept 2017 Electorate	31 March 2023 Electorate	Ratio Electors to Seats	Forecast Ratio Electors to Seats	Variance from Average
Not Applicable	9	1168	1183	130	131	-59%

1.1 Heath & Reach parish has a Parish Council. It is unwarded and has 9 seats on the Council. The forecast development to March 2023 is estimated at a further 9 dwellings.

1.2 The parish boundary adjoins the neighbouring parishes of Battlesden, Eggington, Hockliffe, Leighton-Linslade and Potsgrove. The parish, together with the parishes of Chalgrave, Eggington, Hockliffe, Stanbridge and Tilsworth are coterminous within the district ward of Heath & Reach.

1.3 The Parish Council did not submit a response to the invitation of initial submissions. However, the 1 online response received from the public which recommended a reduction in the number of councillors can be found at <http://www.centralbedfordshire.gov.uk/council/consultations/results.aspx>.

1.4 The 2011 and 2015 elections were uncontested with only 3 nominations in 2011 and 5 nominations in 2015. Consequently, it is recommended that the number of councillors be reduced to 7 which would have the effect of increasing the ratio of electors to seats to 169 (-47% variance from average).

1.5 The overall projected electorate growth over 5 years is 1.3%.

### 2 Draft Recommendations

2.1 That the parish name of Heath & Reach should remain unchanged;

2.2 That the number of parish councillors on Heath & Reach Parish Council be reduced to seven; and

2.3 That no change should be made to the parish boundary of Heath & Reach.

## Henlow

### 1 Background

Parish Ward	Seats	1 Sept 2017 Electorate	31 March 2023 Electorate	Ratio Electors to Seats	Forecast Ratio Electors to Seats	Variance from Average
Camp	2	1017	1017	509	509	+60%
Village	10	1819	1841	182	184	-42%

1.1 Henlow parish has a Parish Council and is currently divided into 2 wards. Camp ward with 2 councillors and Village ward with 10 councillors. The forecast development to March 2023 is estimated at a further 13 dwellings in the Village ward but none in the Camp ward.

1.2 The parish boundary adjoins the neighbouring parishes of Arlesey, Clifton, Meppershall, Langford and Stondon. The parish, together with the parish of Arlesey, Clifton and Stondon are coterminous within the district ward of Arlesey.

1.3 The submissions from the Parish Council to abolish the Camp ward together with the adjustment to the ward boundary to include the whole of the airfield in Henlow parish and the 36 online responses that were received from the public can be found at

<http://www.centralbedfordshire.gov.uk/council/consultations/results.aspx>

1.4 The number of mixed submissions from the residents clearly indicates that there is a ground swell of differing opinions regarding the future of the Camp ward. Moreover, a submission from Stondon Parish Council has also been received which seeks to extend its parish boundary to incorporate the whole of the Camp ward. However, both the submission from Henlow Parish Council and Stondon Parish Council to amend their respective parish boundaries was rejected on the grounds that such a change would be contrary to the Terms of Reference.

1.5 The 2011 and 2015 elections in the Camp ward were uncontested with 2 nominations in 2011 and only 1 in 2015. For the Village ward, the 2011 and 2015 elections were also uncontested with 9 nominations in 2011 and 8 nominations in 2015. Consequently, and notwithstanding that 28 of the 36 submissions from the public to retain the current number of councillors, it is recommended that the Camp ward be abolished and the number of councillors be reduced to 10 which would have the effect of increasing the ratio of electors to seats to 284 (-10% variance from average).

1.6 The overall projected electorate growth over 5 years is nil for Camp ward and 1.2% for the Village ward.

### 2 Draft Recommendations

2.1 That the parish name of Henlow should remain unchanged;

- 2.2 That the Camp ward be abolished.
- 2.3 That the number of parish councillors on Henlow Parish Council be reduced to ten; and
- 2.4 That no change should be made to the parish boundary of Henlow.

# Hockliffe

## 1 Background

Parish Ward	Seats	1 Sept 2017 Electorate	31 March 2023 Electorate	Ratio Electors to Seats	Forecast Ratio Electors to Seats	Variance from Average
Not Applicable	7	787	819	112	117	-63%

1.1 Hockliffe parish has a Parish Council. It is unwarded and has 7 seats on the Council. The forecast development to March 2023 is estimated at a further 19 dwellings.

1.2 The parish boundary adjoins the neighbouring parishes of Battlesden, Chalgrave, Eggington, Heath & Reach and Tilsworth. The parish, together with the parishes of Chalgrave, Eggington, Heath & Reach, Stanbridge and Tilsworth are coterminous within the district ward of Heath & Reach.

1.3 Neither the Parish Council nor the public submitted a response to the invitation of initial submissions.

1.4 Whilst the 2011 elections were contested with 8 nominations and the 2015 elections were uncontested with only 4 nominations the National Association of Local Councils considers that the practical minimum number of parish councillors should be seven.

1.5 The overall projected electorate growth over 5 years is 4.1%.

## 2 Draft Recommendations

2.1 That the parish name of Hockliffe should remain unchanged;

2.2 That the number of parish councillors on Hockliffe Parish Council remain unchanged (seven); and

2.3 That no change should be made to the parish boundary of Hockliffe.



# Houghton Conquest

## 1 Background

Parish Ward	Seats	1 Sept 2017 Electorate	31 March 2023 Electorate	Ratio Electors to Seats	Forecast Ratio Electors to Seats	Variance from Average
Not Applicable	10	1286	2792	129	279	-13%

1.1 Houghton Conquest parish has a Parish Council. It is unwarded and has 10 seats on the Council. The forecast development to March 2023 is estimated at a further 886 dwellings.

1.2 The parish boundary adjoins the neighbouring parishes of Ampthill, Haynes, Millbrook and Maulden. The parish, together with the parish of Haynes are coterminous within the district ward of Houghton Conquest & Haynes.

1.3 There were no responses from the public to the invitation of initial submissions. However, the submission from the Parish Council can be found at <http://www.centralbedfordshire.gov.uk/council/consultations/results.aspx>

1.4 The 2011 and 2015 elections were uncontested with only 6 nominations in 2011 and 9 nominations in 2015. Nevertheless, no changes to the number of parish councillors is recommended at this time.

1.5 The development at Houghton Park Farm in the south of the parish straddles the parishes of Houghton Conquest and Ampthill (as shown at Map 2). It is therefore recommended that this anomaly is corrected by formally incorporating the relevant properties into the parish of Ampthill.

1.6 The substantial development in the north of the parish over the next 5 years will have a major impact on the existing community and it is considered that warding of the parish will afford an opportunity to reflect the separate identities of the respective communities. The area of the proposed ward is shown at Map 8.

1.7 The overall projected electorate growth over 5 years is 117%.

## 2 Draft Recommendations

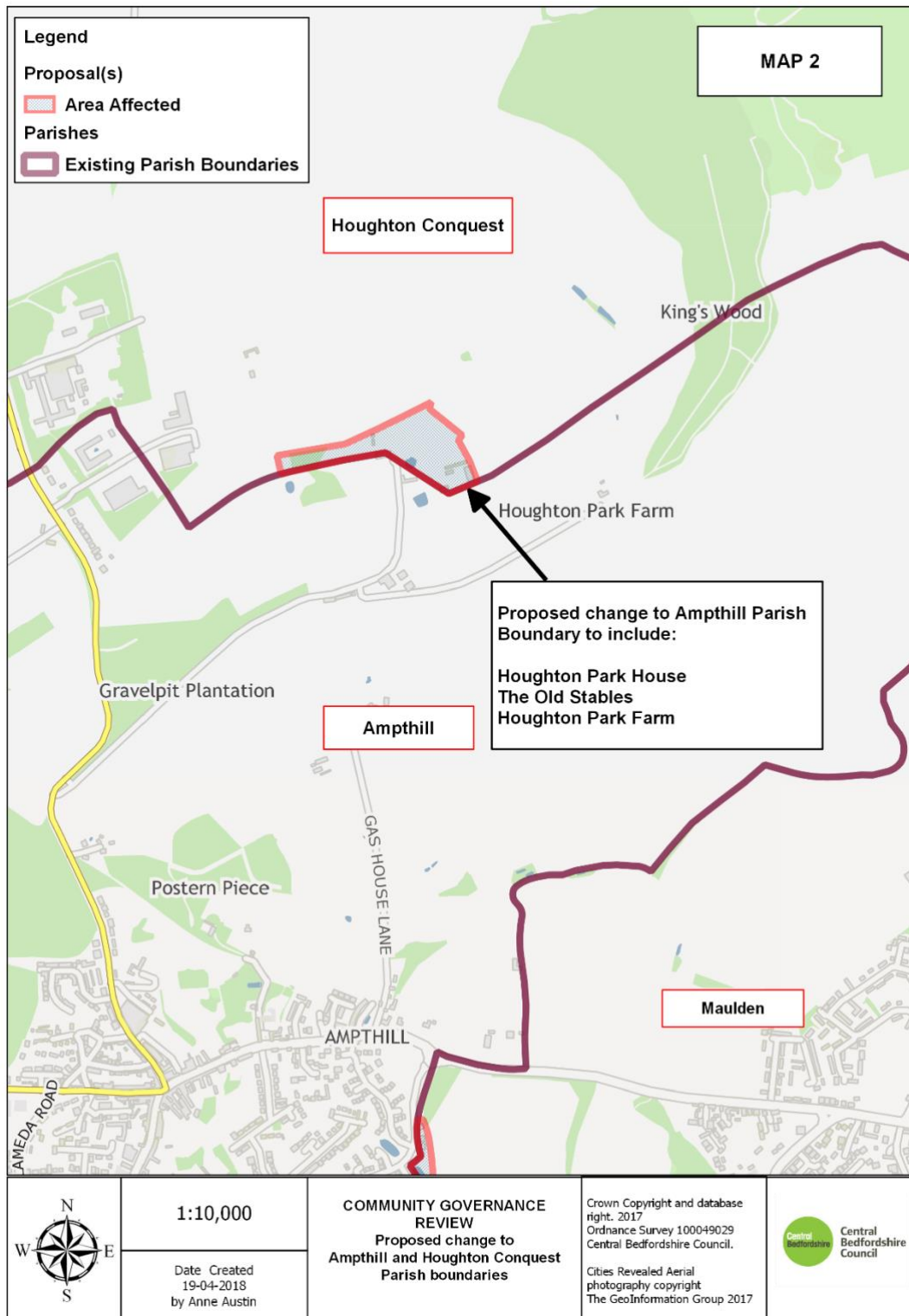
2.1 That the parish name of Houghton Conquest should remain unchanged;

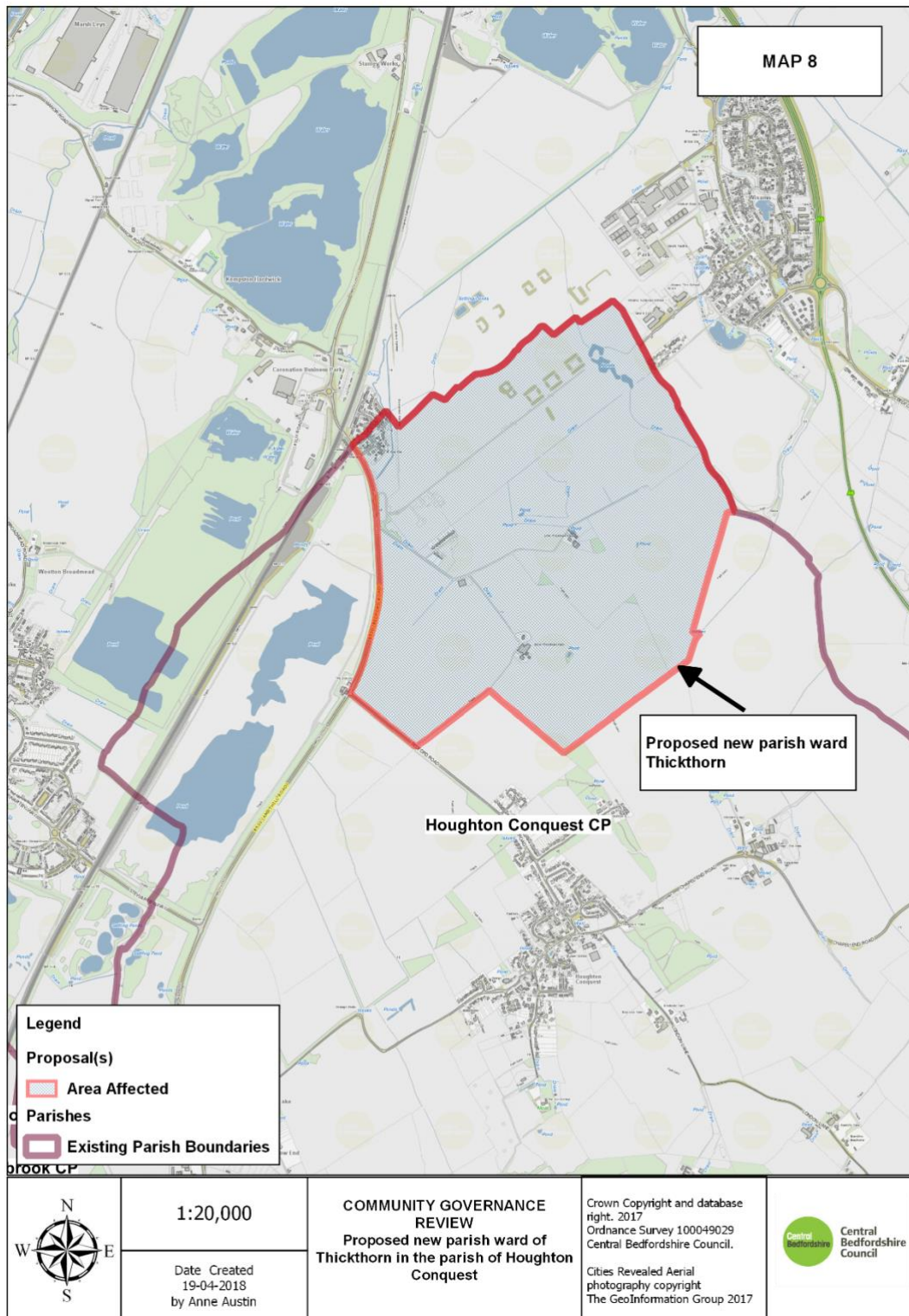
2.2 That the parish should be divided into two wards named Village and Thickthorn;

2.3 That the number of parish councillors on Houghton Conquest Parish Council remain unchanged (ten)

2.4 That the number of parish councillors for Village ward is five and for the Thickthorn ward is five; and

2.4 That the boundary of the parish be changed to exclude the properties Houghton Park Farm, Houghton Park House and The Old Stables.





# Houghton Regis

## 1 Background

Parish Ward	Seats	1 Sept 2017 Electorate	31 March 2023 Electorate	Ratio Electors to Seats	Forecast Ratio Electors to Seats	Variance from Average
Houghton Hall	6	6291	7741	1049	1290	304%
Parkside	4	3533	3584	883	896	181%
Tithe Farm	4	3294	3294	824	824	158%

1.1 Houghton Regis parish has a Town Council and is currently divided into 3 wards. Houghton Hall ward with 6 councillors, Parkside with 4 councillors and Tithe Farm ward with 4 councillors. The forecast development to March 2023 is estimated at a further 853 dwellings in the Houghton Hall ward, 30 in the Parkside ward but none in the Tithe Farm ward.

1.2 The parish boundary adjoins the neighbouring parishes of Chalgrave, Chalton, Dunstable, Tilsworth and Totternhoe. The parish wards are coterminous within the 3 district wards of the same names.

1.3 The submissions from the Town Council and the 7 online responses that were received from the public can be found at <http://www.centralbedfordshire.gov.uk/council/consultations/results.aspx>

1.4 The development in Portland Ride built in the late 1990s extended across the parish boundary from Houghton Regis to Dunstable (as shown at Map 7). It is therefore recommended that this anomaly is corrected by formally moving the relevant properties, Numbers 21 to 33 Portland Ride into the parish of Houghton Regis.

1.5 Clearly the extensive development in the Houghton Hall ward in the next 5 years will have a significant impact on the parish and consideration will have to be given as to whether the development area should become a separate parish ward.

1.6 The submissions from Totternhoe Parish Council to extend its boundaries into Houghton Regis can be found at <http://www.centralbedfordshire.gov.uk/council/consultations/results.aspx> However, the submission was rejected as being contrary to the Terms of Reference.

1.7 Notwithstanding, that there were mixed views regarding councillor numbers within the submissions received. There is no legislative guidance with regard to the ideal number of parish councillors and there is no legal sliding scale and whilst the 2011 and 2015 elections were contested with 10 nominations in 2011 and 12 in 2015 for the Houghton Hall ward, 8 nominations in 2011 and 7 in 2015 for the Parkside ward and 8 nominations in 2011 and 11 in 2015 for the Tithe Farm ward it is

considered that the practical number of parish councillors, at this time, should remain at fourteen.

1.8 The overall projected electorate growth over 5 years is 23% for Houghton Hall ward, 1.5% for the Parkside ward and nil for the Tithe Farm ward.

## **2 Draft Recommendations**

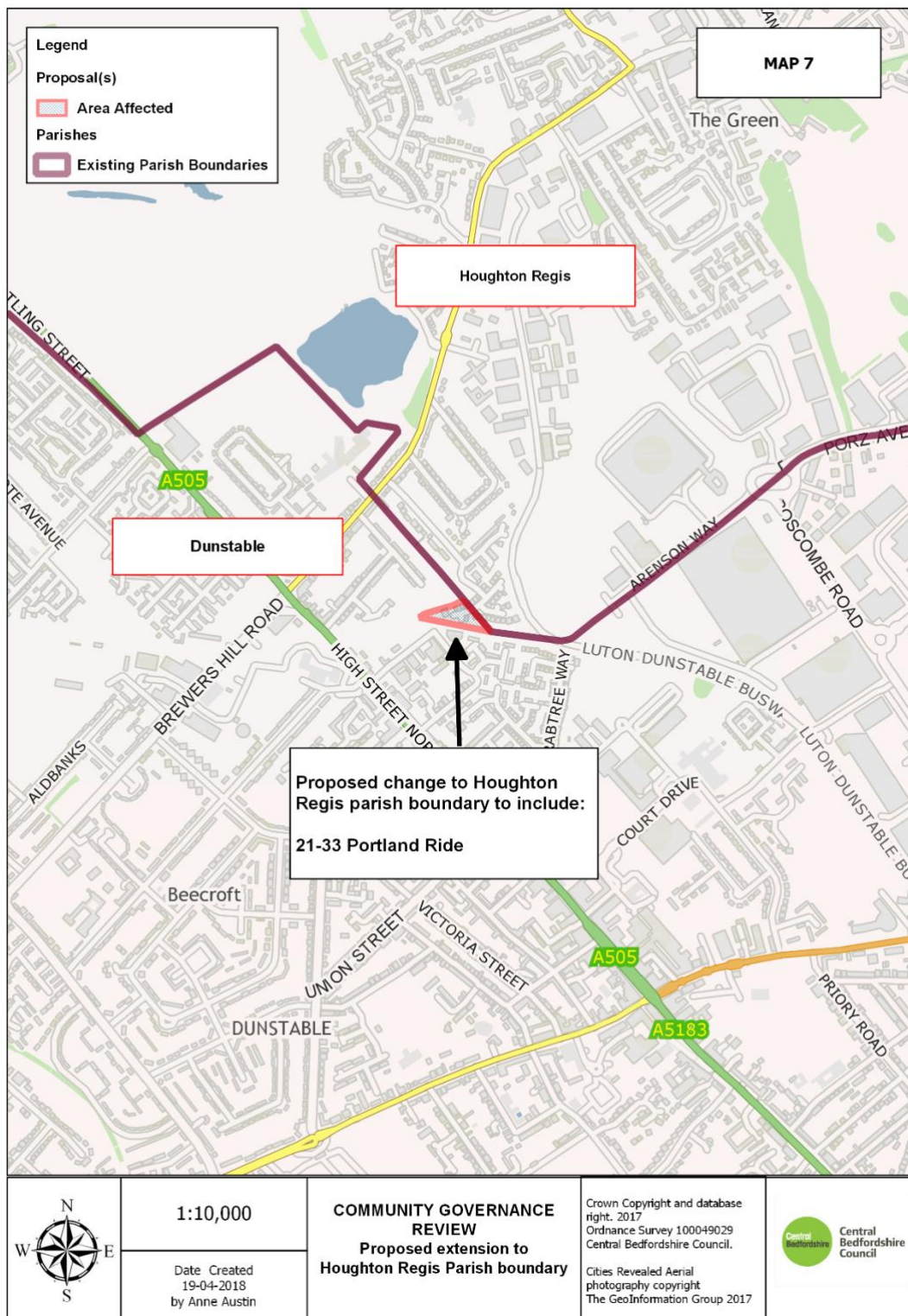
2.1 That the parish name of Houghton Regis should remain unchanged;

2.2 That the number of parish councillors on Houghton Regis Town Council remain unchanged (fourteen);

2.3 That the boundary of the parish be changed to effect the inclusion of the properties at Numbers 21 to 33 Portland Ride; and

2.4 That a further governance review of the parish be held when a substantial number of the proposed development in the Houghton Hall ward has taken place.





## Hulcote & Salford

### 1 Background

Parish Ward	Seats	1 Sept 2017 Electorate	31 March 2023 Electorate	Ratio Electors to Seats	Forecast Ratio Electors to Seats	Variance from Average
Not Applicable	7	179	184	26	26	-92%

1.1 Hulcote & Salford parish has a Parish Council. It is unwarded and has 7 seats on the Council. The forecast development to March 2023 is estimated at a further 3 dwellings.

1.2 The parish boundary adjoins the neighbouring parishes of Aspley Guise, Brogborough and Cranfield. The parish, together with the parishes of Brogborough, Cranfield, Lidlington, Millbrook, Marston Moretaine and Ridgmont are coterminous within the district ward of Cranfield.

1.3 Neither the Parish Council nor the public submitted a response to the invitation of initial submissions.

1.4 Whilst the 2011 elections were uncontested with 7 nominations and the 2015 elections were contested with 11 nominations the National Association of Local Councils considers that the practical minimum number of parish councillors should be seven.

1.5 The overall projected electorate growth over 5 years is 2.8%.

### 2 Draft Recommendations

2.1 That the parish name of Hulcote & Salford should remain unchanged;

2.2 That the number of parish councillors on Hulcote & Salford Parish Council remain unchanged (seven); and

2.3 That no change should be made to the parish boundary of Hulcote & Salford.

# Husborne Crawley

## 1 Background

Parish Ward	Seats	1 Sept 2017 Electorate	31 March 2023 Electorate	Ratio Electors to Seats	Forecast Ratio Electors to Seats	Variance from Average
Not Applicable	7	183	191	26	27	-92%

1.1 Husborne Crawley parish has a Parish Council. It is unwarded and has 7 seats on the Council. The forecast development to March 2023 is estimated at a further 5 dwellings.

1.2 The parish boundary adjoins the neighbouring parishes of Aspley Guise, Brogborough, Ridgmont and Woburn. The parish, together with the parishes of Aspley Guise, Aspley Heath, Battlesden, Eversholt, Milton Bryan, Potsgrove and Woburn are coterminous within the district ward of Aspley & Woburn.

1.3 Neither the Parish Council nor the public submitted a response to the invitation of initial submissions.

1.4 Whilst the 2011 and the 2015 elections were uncontested with only 5 nominations in 2011 and 7 nominations in 2015 the National Association of Local Councils considers that the practical minimum number of parish councillors should be seven.

1.5 The overall projected electorate growth over 5 years is 4.4%.

## 2 Draft Recommendations

2.1 That the parish name of Husborne Crawley should remain unchanged;

2.2 That the number of parish councillors on Husborne Crawley Parish Council remain unchanged (seven); and

2.3 That no change should be made to the parish boundary of Husborne Crawley.



# Hyde

## 1 Background

Parish Ward	Seats	1 Sept 2017 Electorate	31 March 2023 Electorate	Ratio Electors to Seats	Forecast Ratio Electors to Seats	Variance from Average
Not Applicable	7	317	317	45	45	-86%

1.1 Hyde parish has a Parish Council. It is unwarded and has 7 seats on the Council. There is no forecast development to March 2023.

1.2 The parish boundary adjoins the neighbouring parish of Slip End. The parish, together with the parishes of Caddington, Kensworth, Slip End, Studham and Whipsnade are coterminous within the district ward of Caddington, Hyde and Slip End.

1.3 Neither the Parish Council nor the public submitted a response to the invitation of initial submissions.

1.4 Whilst the 2011 and the 2015 elections were uncontested with only 4 nominations in 2011 and 6 nominations in 2015 the National Association of Local Councils considers that the practical minimum number of parish councillors should be seven.

1.5 The overall projected electorate growth over 5 years is nil.

## 2 Draft Recommendations

2.1 That the parish name of Hyde should remain unchanged;

2.2 That the number of parish councillors on Hyde Parish Council remain unchanged (seven); and

2.3 That no change should be made to the parish boundary of Hyde.

## Kensworth

### 1 Background

Parish Ward	Seats	1 Sept 2017 Electorate	31 March 2023 Electorate	Ratio Electors to Seats	Forecast Ratio Electors to Seats	Variance from Average
Not Applicable	9	1168	1176	130	131	-59%

1.1 Kensworth parish has a Parish Council. It is unwarded and has 9 seats on the Council. The forecast development to March 2023 is estimated at a further 5 dwellings.

1.2 The parish boundary adjoins the neighbouring parishes of Caddington, Dunstable, Totternhoe and Whipsnade. The parish, together with the parishes of Caddington, Hyde, Slip End, Studham and Whipsnade are coterminous within the district ward of Caddington, Hyde and Slip End.

1.3 The submissions from the Parish Council to reduce the number of councillors together with the 1 online response which was received from the public can be found at

<http://www.centralbedfordshire.gov.uk/council/consultations/results.aspx>. The proposal from Dunstable Town Council to extend into several fields in the northern quarter of Kensworth parish can also be found at

<http://www.centralbedfordshire.gov.uk/council/consultations/results.aspx>.

However, this submission was rejected as it is contrary to the Terms of Reference.

1.4 The 2011 and the 2015 elections were uncontested with 9 nominations on both occasions. Consequently, and notwithstanding the 1 submission from the public to retain the current number of councillors, it is recommended that the number of councillors be reduced to 7 which would have the effect of increasing the ratio of electors to seats to 168 (-47% variance from average).

1.5 The overall projected electorate growth over 5 years is 0.7%.

### 2 Draft Recommendations

2.1 That the parish name of Kensworth should remain unchanged;

2.2 That the number of parish councillors on Kensworth Parish Council be reduced to seven; and

2.3 That no change should be made to the parish boundary of Kensworth.

# Langford

## 1 Background

Parish Ward	Seats	1 Sept 2017 Electorate	31 March 2023 Electorate	Current Ratio Electors to Seats	Forecast Ratio Electors to Seats	Variance from Average
Not Applicable	13	2590	2950	199	227	-29%

1.1 Langford has a Parish Council. It is unwarded and has 13 seats on the Council. The forecast development to March 2023 is estimated at a further 212 dwellings.

1.2 The parish boundary adjoins the neighbouring parishes of Arlesey, Astwick, Biggleswade, Clifton, Henlow and Southill. The parish, together with the parishes of Astwick, Fairfield and Stotfold are coterminous within the district ward of Stotfold & Langford.

1.3 The Parish Council did not submit a response to the invitation of initial submissions. However, 1 online response was received from the public which can be found at

<http://www.centralbedfordshire.gov.uk/council/consultations/results.aspx>.

1.4 The 2011 and the 2015 elections were uncontested with 9 nominations in 2011 and only 7 nominations in 2015. Consequently, and notwithstanding the submission from the 1 member of the public to retain the current number of councillors, it is recommended that the number of councillors be reduced to 10 which would have the effect of increasing the ratio of electors to seats to 295 (-8% variance from average).

1.5 The overall projected electorate growth over 5 years is 13.9%.

## 2 Draft Recommendations

2.1 That the parish name of Langford should remain unchanged;

2.2 That the number of parish councillors on Langford Parish Council be reduced to ten; and

2.3 That no change should be made to the parish boundary of Langford.

# Leighton-Linslade

## 1 Background

Parish Ward	Seats	1 Sept 2017 Electorate	31 March 2023 Electorate	Current Ratio Electors to Seats	Forecast Ratio Electors to Seats	Variance from Average
Barnabas	3	4260	4335	1420	1445	+353%
Brooklands	2	2751	2751	1376	1376	+331%
Grovebury	4	6231	7226	1558	1807	+466%
Leston	1	1401	1401	1401	1401	+339%
Planets	2	3493	3862	1747	1931	+505%
Plantation	3	4573	5347	1524	1782	+459%
Southcott	4	5270	5270	1318	1318	+313%
St George's	2	3355	3355	1678	1678	+426%

1.1 Leighton-Linslade parish has a Town Council and is currently divided into 8 wards. Barnabas and Plantation wards with 3 councillors each, Brookland's, Planets and St George's wards with 2 councillors each. Leston ward with 1 councillor and Grovebury and Southcott wards with 4 councillors each. The forecast development to March 2023 is estimated at a further 44 dwellings in Barnabas ward, 217 in Planets ward, 455 in Plantation ward and 585 in Grovebury ward. The remaining wards of Southcott, St George's, Brooklands and Leston have no forecast development to March 2023.

1.2 The parish boundary adjoins the neighbouring parishes of Eggington, Great Billington, Heath & Reach and Stanbridge. The parish, is coterminous within the 3 district wards of Leighton Buzzard North, Leighton Buzzard South and Linslade.

1.3 The submission from the Town Council to review the boundaries in the east of the parish together with the submission to abolish the parish ward of Leston (as shown at Map 9) and to reduce the number of parish ward councillors and the 20 online responses that were received from the public can be found at <http://www.centralbedfordshire.gov.uk/council/consultations/results.aspx>

1.4 The 2011 elections were contested in all 8 wards with 7 nominations for Barnabas, 4 for Brooklands, 7 for Grovebury, 2 for Leston, 4 for Planets, 5 for Plantation, 7 for Southcott and 6 for St George's. The 2015 elections were equally as competitive with 11 nominations for Barnabas, 4 for Brooklands, 10 for Grovebury, 3 for Leston, 5 for Planets, 8 for Plantation, 15 for Southcott and 6 for St George's. However, it is noted that the submissions from the majority of the public have

requested that the number of councillors be reduced, which is consistent with government advice that the conduct of parish council business does not usually require a large body of councillors.

1.5 Clearly the substantial development in the next 5 years will have a major impact on the parish. Moreover, the number of mixed submissions from the residents indicates that there is a ground-swell of differing opinions regarding the future developments that traverse the parish boundaries of Leighton-Linslade, Eggington and Stanbridge. However, it should be noted that in the case of *Offerton Park Parish Council v Stockport Borough Council* (2011), the High Court held that a decision to abolish a Parish Council should be overturned as the Council had not had proper regard to the material consideration that the majority of the electorate had not expressed an opinion. Consequently, it is not considered appropriate at this time to review the affected parish boundaries.

1.6 The overall projected electorate growth over 5 years is 1.8% for Barnabas ward, 16% for Grovebury ward, 10.6% for Planets ward and 17% for the Plantation ward.

## **2 Draft Recommendations**

2.1 That the parish name of Leighton-Linslade should remain unchanged;

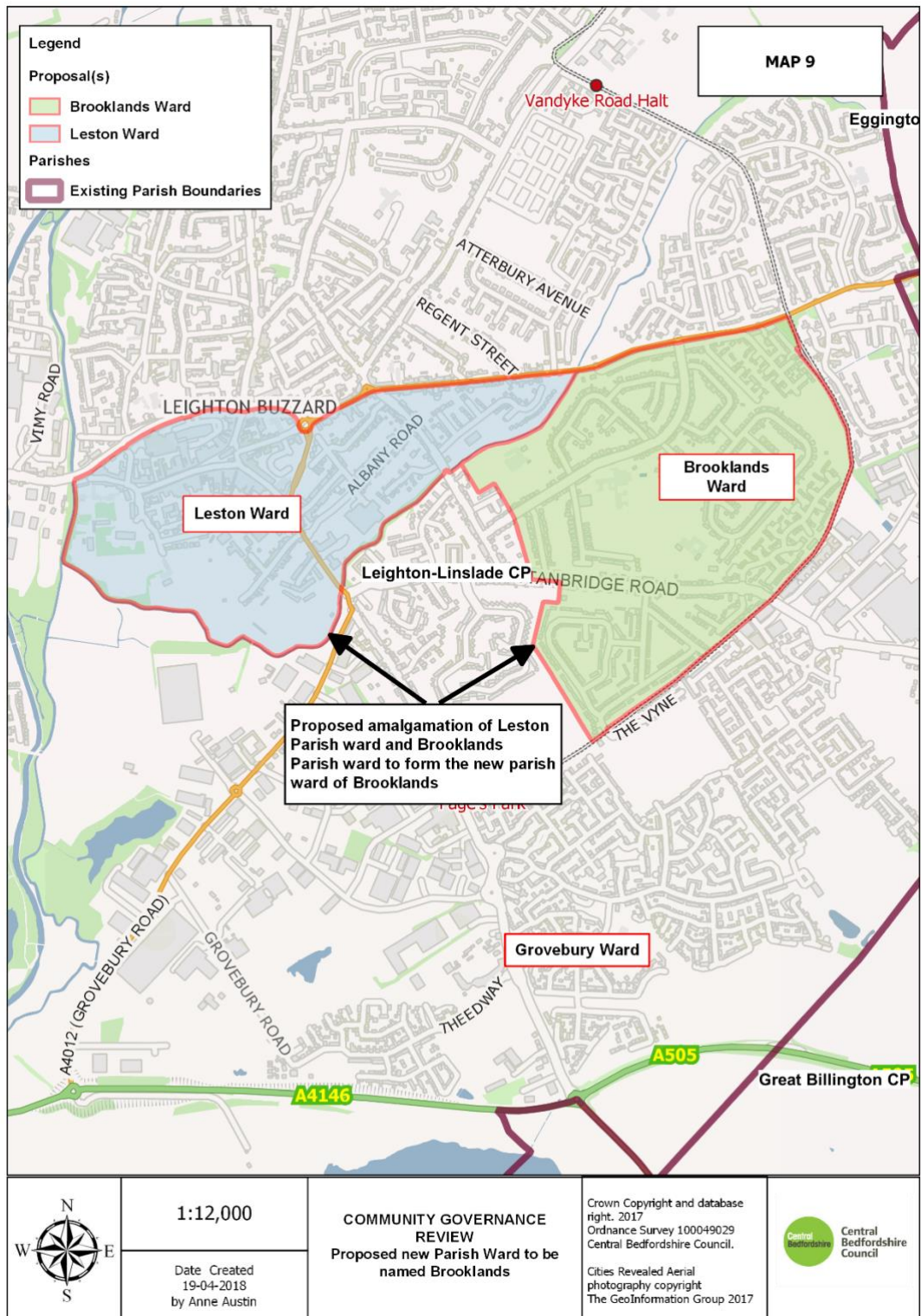
2.2 That the parish ward of Brooklands be extended to incorporate the parish ward of Leston;

2.3 That the parish ward of Leston be abolished;

2.4 That the number of parish councillors on Leighton-Linslade Town Council be reduced to nineteen (Barnabas (3), Brooklands (2), Grovebury (4), Planets (2), Plantation (3), Southcott (3) and St George's (2));

2.5 That a further governance review of the parish be held when a substantial number of the proposed development that traverses the parish of Eggington has taken place; and

2.6 That no change should be made to the parish boundary of Leighton-Linslade.



# Lidlington

## 1 Background

Parish Ward	Seats	1 Sept 2017 Electorate	31 March 2023 Electorate	Current Ratio Electors to Seats	Forecast Ratio Electors to Seats	Variance from Average
Not Applicable	9	1071	1124	119	125	-61%

1.1 Lidlington parish has a Parish Council. It is unwarded and has 9 seats on the Council. The forecast development to March 2023 is estimated at a further 31 dwellings.

1.2 The parish boundary adjoins the neighbouring parishes of Brogborough, Marston Moretaine, Millbrook and Ridgmont. The parish, together with the parishes of Brogborough, Cranfield, Hulcote & Salford, Millbrook, Marston Moretaine and Ridgmont are coterminous within the district ward of Cranfield.

1.3 Neither the Parish Council nor the public submitted a response to the invitation of initial submissions.

1.4 The 2011 and the 2015 elections were uncontested with 7 nominations in 2011 and 8 nominations in 2015. Consequently, it is recommended that the number of councillors be reduced to 7 which would have the effect of increasing the ratio of electors to seats to 161 (-50% variance from average).

1.5 The overall projected electorate growth over 5 years is 4.9%.

## 2 Draft Recommendations

2.1 That the parish name of Lidlington should remain unchanged;

2.2 That the number of parish councillors on Lidlington Parish Council be reduced to seven; and

2.3 That no change should be made to the parish boundary of Lidlington.

# Marston Moretaine

## 1 Background

Parish Ward	Seats	1 Sept 2017 Electorate	31 March 2023 Electorate	Ratio Electors to Seats	Forecast Ratio Electors to Seats	Variance from Average
Not Applicable	12	4442	5265	370	439	+38%

1.1 Marston Moretaine parish has a Parish Council. It is unwarded and has 12 seats on the Council. The forecast development to March 2023 is estimated at a further 484 dwellings.

1.2 The parish boundary adjoins the neighbouring parishes of Cranfield, Hulcote & Salford, Lidlington and Millbrook. The parish, together with the parishes of Brogborough, Cranfield, Hulcote & Salford, Lidlington, Millbrook and Ridgmont are coterminous within the district ward of Cranfield.

1.3 The submissions from the Parish Council to change the spelling of the parish name together with the 3 online mixed responses that were received from the public can be found at

<http://www.centralbedfordshire.gov.uk/council/consultations/results.aspx>

1.4 Whilst the 2011 elections were contested with 14 nominations and the 2015 elections were uncontested with only 9 nominations it is not considered appropriate to recommend a reduction in the number of councillors when taking into account the considerable amount of planned development.

1.5 The overall projected electorate growth over 5 years is 18.5%.

## 2 Draft Recommendations

2.1 That the parish name be changed to Marston Moreteyne;

2.2 That the number of parish councillors on Marston Moreteyne Parish Council remain unchanged (twelve); and

2.3 That no change should be made to the parish boundary of Marston Moreteyne.



# Maulden

## 1 Background

Parish Ward	Seats	1 Sept 2017 Electorate	31 March 2023 Electorate	Ratio Electors to Seats	Forecast Ratio Electors to Seats	Variance from Average
Not Applicable	12	2498	2505	208	209	-35%

1.1 Maulden parish has a Parish Council. It is unwarded and has 12 seats on the Council. The forecast development to March 2023 is estimated at a further 4 dwellings.

1.2 The parish boundary adjoins the neighbouring parishes of Ampthill, Clophill, Flitton & Greenfield, Flitwick, Haynes, Houghton Conquest and Silsoe. The parish, together with the parishes of Ampthill and Clophill are coterminous within the district ward of Ampthill.

1.3 Neither the Parish Council nor the public submitted a response to the invitation of initial submissions.

1.4 Development to the east of Ampthill in the 1980s and 90s extended across the parish boundaries of Ampthill and Maulden (as shown at Map1). It is therefore recommended that this anomaly is corrected by formally incorporating the relevant properties into the parish of Ampthill.

1.5 The 2011 elections were uncontested with 12 nominations. However, the 2015 elections were contested with 13 nominations. Nevertheless, it is recommended that the number of councillors be reduced to 8 which would have the effect of increasing the ratio of electors to seats to 313 (-2% variance from average).

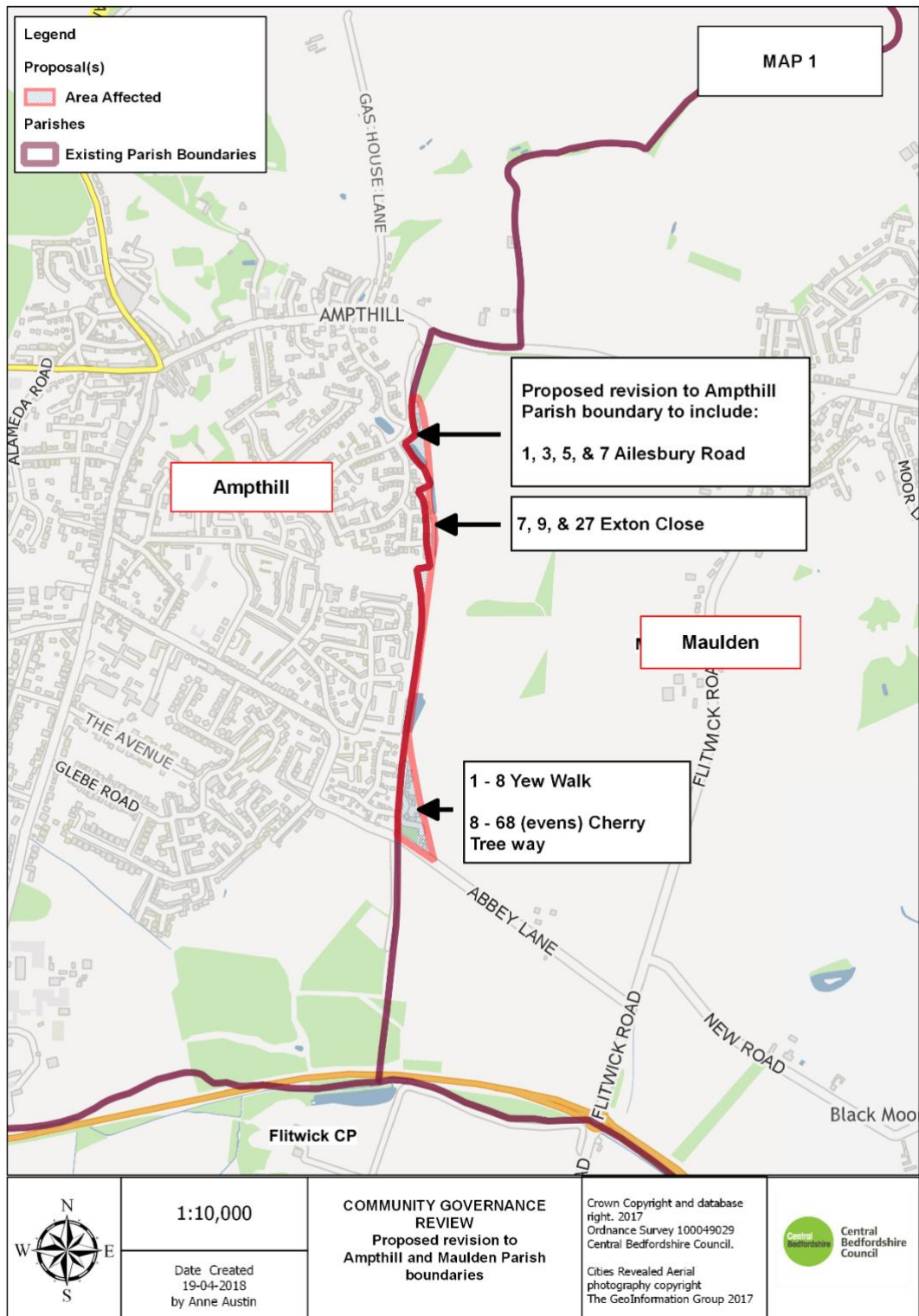
1.6 The overall projected electorate growth over 5 years is 0.3%.

## 2 Draft Recommendations

2.1 That the parish name of Maulden should remain unchanged;

2.2 That the number of parish councillors on Maulden Parish Council be reduced to eight; and

2.3 That the boundary of the parish be changed to exclude the properties at Numbers 1 to 8 Yew Walk; 8 to 68 (evens) Cherry Tree Way; 7, 9 & 27 Exton Close and 1 to 7 (odds) Ailesbury Road.



# Meppershall

## 1 Background

Parish Ward	Seats	1 Sept 2017 Electorate	31 March 2023 Electorate	Ratio Electors to Seats	Forecast Ratio Electors to Seats	Variance from Average
Not Applicable	10	1415	1548	142	155	-51%

1.1 Meppershall parish has a Parish Council. It is unwarded and has 10 seats on the Council. The forecast development to March 2023 is estimated at a further 78 dwellings.

1.2 The parish boundary adjoins the neighbouring parishes of Campton & Chicksands, Clifton, Gravenhurst, Henlow, Shefford, Shillington and Stondon. The parish, together with the parishes of Campton & Chicksands and Shefford are coterminous within the district ward of Shefford.

1.3 The submissions from the Parish Council and the 7 online responses that were received from the public can be found at <http://www.centralbedfordshire.gov.uk/council/consultations/results.aspx>

1.4 The 2011 and the 2015 elections were uncontested with 8 nominations in 2011 and 9 nominations in 2015. Consequently, and notwithstanding that 6 of the 7 submissions from the public requested a retention in the current number of councillors, it is recommended that the number of councillors be reduced to 7 which would have the effect of increasing the ratio of electors to seats to 221 (-31% variance from average).

1.5 The overall projected electorate growth over 5 years is 9.4%.

## 2 Draft Recommendations

2.1 That the parish name of Meppershall should remain unchanged;

2.2 That the number of parish councillors on Meppershall Parish Council be reduced to seven; and

2.3 That no change should be made to the parish boundary of Meppershall.

## Millbrook

### 1 Background

Parish Ward	Seats	1 Sept 2017 Electorate	31 March 2023 Electorate	Ratio Electors to Seats	Variance from Average
Not Applicable	N/A	122	125	N/A	N/A

1.1 Millbrook is one of the seven parishes which do not have a Council but meets as a parish meeting. The forecast development to March 2023 is estimated at a further 2 dwellings.

1.2 The parish boundary adjoins the neighbouring parishes of Ampthill, Lidlington, Marston Moretaine and Steppingley. The parish, together with the parishes of Brogborough, Cranfield, Hulcote & Salford, Lidlington, Ridgmont and Marston Moretaine are coterminous within the district ward of Cranfield.

1.3 There are only 65 properties and 122 electors in the parish. The parish operates as a parish meeting and has a relatively strong sense of identity.

1.4 The Parish Meeting nor the public submitted a response to the invitation of initial submissions.

1.5 The overall projected electorate growth over 5 years is 2.5%

### 2 Draft Recommendations

2.1 That the parish name of Millbrook should remain unchanged;

2.2 That the parish should not have a parish council; and

2.3 That no change should be made to the parish boundary of Millbrook.

.

## Milton Bryan

### 1 Background

Parish Ward	Seats	1 Sept 2017 Electorate	31 March 2023 Electorate	Ratio Electors to Seats	Variance from Average
Not Applicable	N/A	141	141	N/A	N/A

1.1 Milton Bryan is one of the seven parishes which do not have a Council but meets as a parish meeting.

1.2 The parish boundary adjoins the neighbouring parishes of Battlesden, Eversholt, Toddington, Potsgrove and Woburn. The parish, together with the parishes of Aspley Guise, Aspley Heath, Battlesden, Eversholt, Husborne Crawley, Potsgrove and Woburn are coterminous within the district ward of Aspley & Woburn.

1.3 There are only 66 properties and 141 electors in the parish and there is no anticipated growth over the next 5 years. The parish operates as a parish meeting and has a relatively strong sense of identity.

1.4 The submissions from the Parish Meeting recommending no changes together with the 2 online responses that were received from the public that also recommended no changes can be found at <http://www.centralbedfordshire.gov.uk/council/consultations/results.aspx>

1.5 The overall projected electorate growth over 5 years is nil.

### 2 Draft Recommendations

2.1 That the parish name of Milton Bryan should remain unchanged;

2.2 That the parish should not have a parish council; and

2.3 That no change should be made to the parish boundary of Milton Bryan.

.

# Moggerhanger

## 1 Background

Parish Ward	Seats	1 Sept 2017 Electorate	31 March 2023 Electorate	Ratio Electors to Seats	Forecast Ratio Electors to Seats	Variance from Average
Not Applicable	9	516	547	57	61	-81%

1.1 Moggerhanger parish has a Parish Council. It is unwarded and has 9 seats on the Council. The forecast development to March 2023 is estimated at a further 18 dwellings.

1.2 The parish boundary adjoins the neighbouring parishes of Blunham, Northill and Sandy. The parish, together with the parishes of Northill, Old Warden and Southill are coterminous within the district ward of Northill.

1.3 The Parish Council did not submit a response to the invitation of initial submissions. However, 1 online response was received from the public which can be found at

<http://www.centralbedfordshire.gov.uk/council/consultations/results.aspx>.

1.4 The development 'Old Station Court' in the north of the parish has extended from the parish of Blunham into the parish of Moggerhanger (as shown at Map 5). It is therefore recommended that this anomaly is corrected by formally incorporating the relevant properties into the parish of Blunham.

1.5 The development at 'Bridge Farm' and 'Ivel Cottage' in the south of the parish have extended into the parish of Sandy (as shown at Map 10). It is therefore recommended that this anomaly is corrected by formally incorporating the relevant properties into the parish of Moggerhanger.

1.6 The 2011 and the 2015 elections were uncontested with 8 nominations in 2011 and 9 nominations in 2015. Consequently, and notwithstanding the 1 submission from the public to retain the current number of councillors, it is recommended that the number of councillors be reduced to 7 which would have the effect of increasing the ratio of electors to seats to 78 (-76% variance from average).

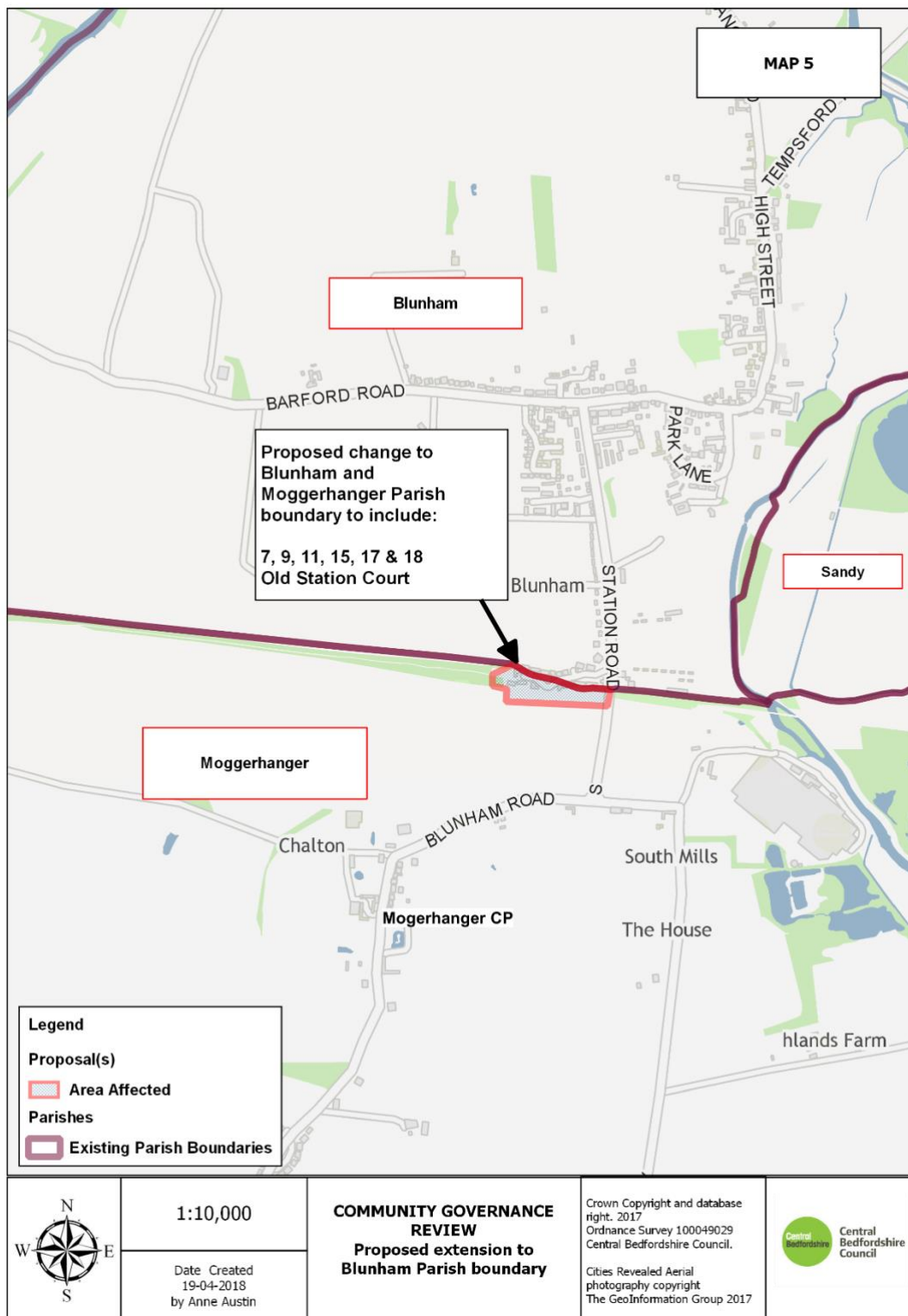
1.7 The overall projected electorate growth over 5 years is 6%.

## 2 Draft Recommendations

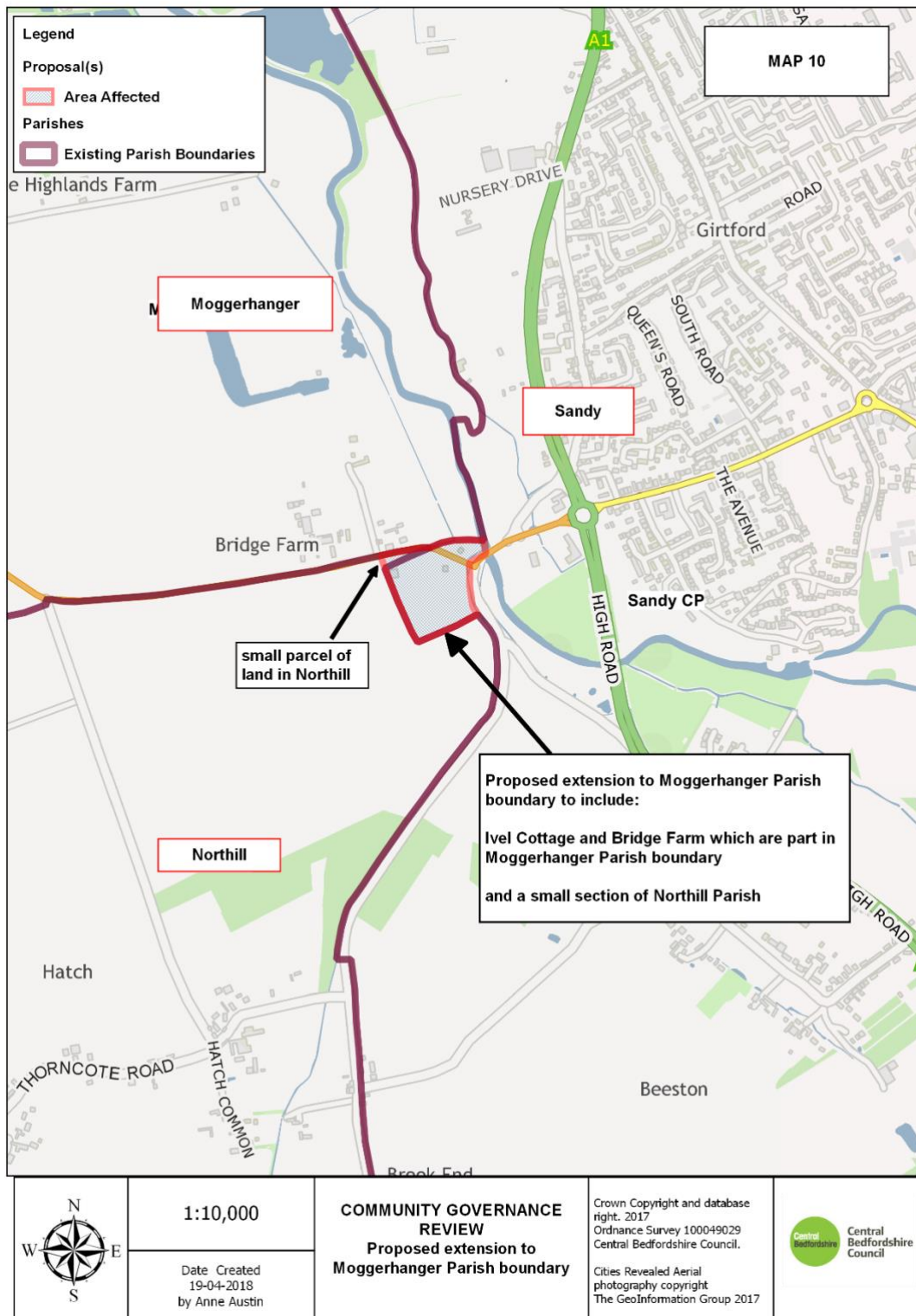
2.1 That the parish name of Moggerhanger should remain unchanged;

2.2 That the number of parish councillors on Moggerhanger Parish Council be reduced to seven; and

2.3 That the boundaries of the parish be changed to exclude the properties at numbers 7 to 17 (odds) and number 18 Old Station Court but to include Bridge Farm and Ivel Cottage.









## Northhill

### 1 Background

Parish Ward	Seats	1 Sept 2017 Electorate	31 March 2023 Electorate	Ratio Electors to Seats	Forecast Ratio Electors to Seats	Variance from Average
Not Applicable	12	1882	1950	157	163	-49%

1.1 Northhill parish has a Parish Council. It is unwarded and has 12 seats on the Council. The forecast development to March 2023 is estimated at a further 40 dwellings.

1.2 The parish boundary adjoins the neighbouring parishes of Biggleswade, Moggerhanger, Old Warden and Sandy. The parish, together with the parishes of Moggerhanger, Old Warden and Southill are coterminous within the district ward of Northhill.

1.3 The Parish Council did not submit a response to the invitation of initial submissions. However, 1 online response was received from the public which can be found at

<http://www.centralbedfordshire.gov.uk/council/consultations/results.aspx>. The submission from Biggleswade Town Council to extend its western boundary to include the A1 is shown at Map 3. Additionally, the development at 'Bridge Farm' and 'Ivel Cottage' in the north of the parish has extended into the parishes of Moggerhanger and Sandy with a small section of Northhill parish in between. It is therefore recommended that this anomaly is corrected by formally incorporating the relevant properties into the parish of Moggerhanger (shown at Map 10).

1.4 The 2011 and the 2015 elections were contested with 15 nominations in 2011 and 17 nominations in 2015. Nevertheless, and notwithstanding the 1 submission from the public to retain the current number of councillors, it is recommended that the number of councillors be reduced to 7 which would have the effect of increasing the ratio of electors to seats to 279 (-13% variance from average).

1.5 The overall projected electorate growth over 5 years is 3.6%.

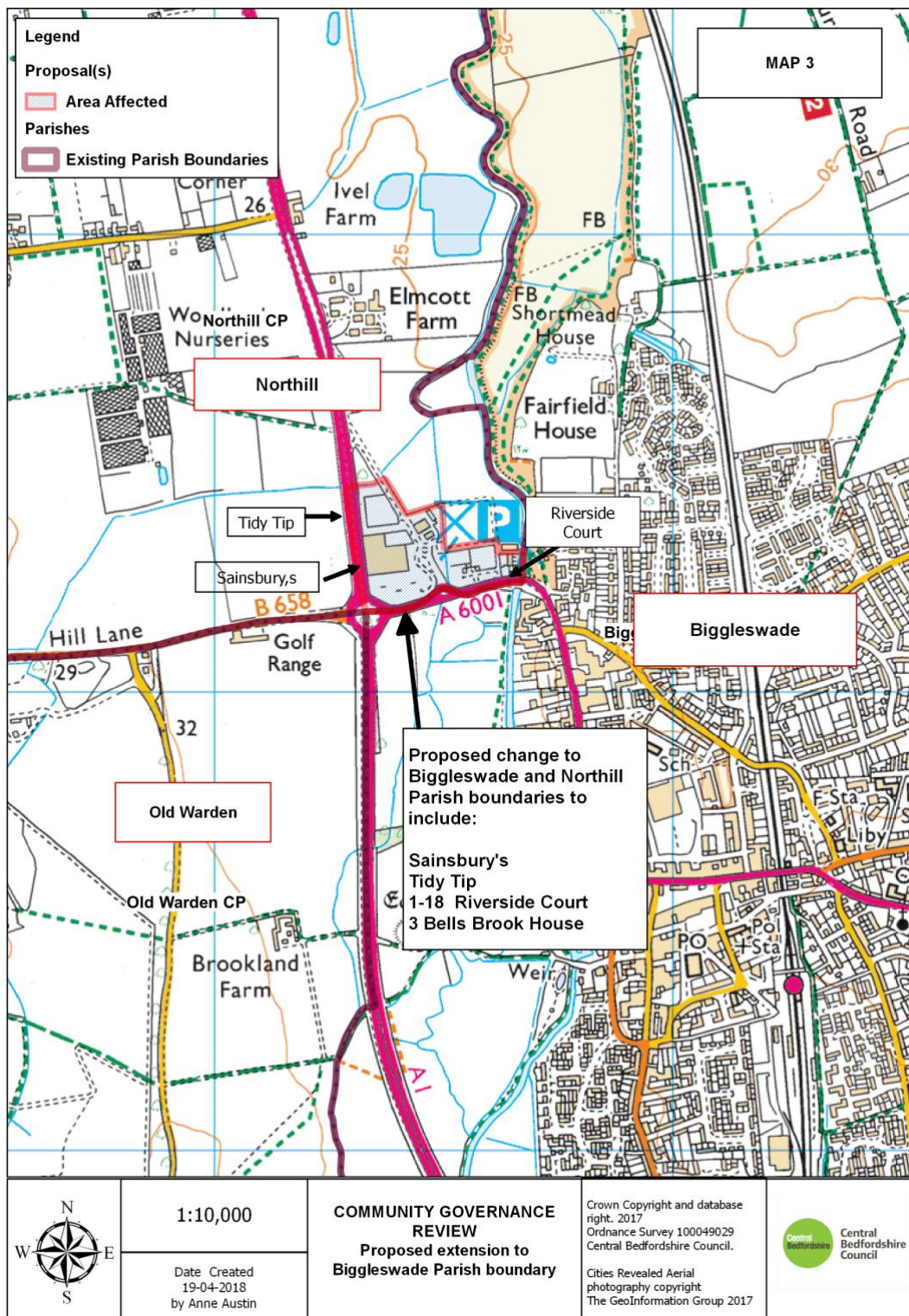
### 2 Draft Recommendations

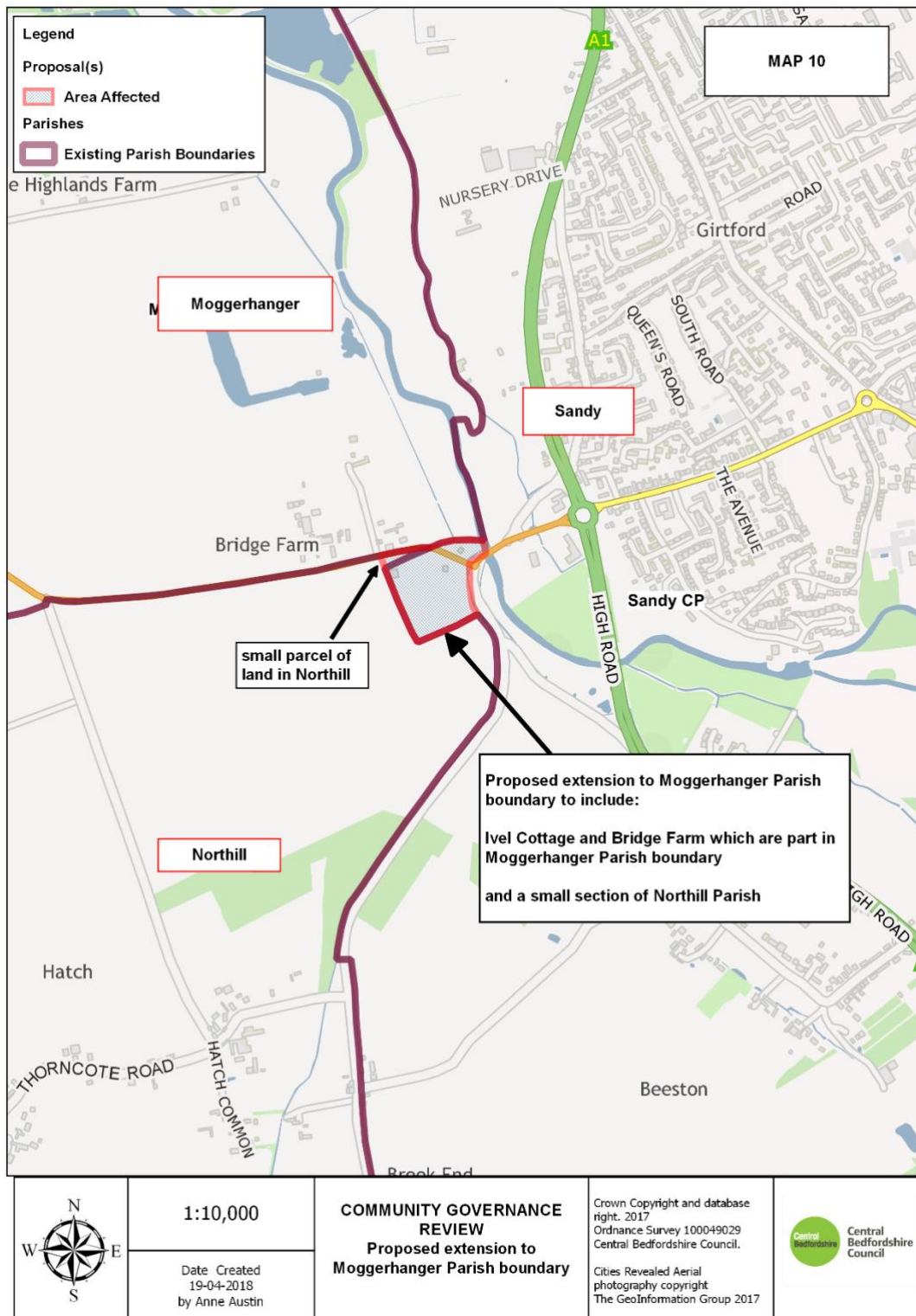
2.1 That the parish name of Northhill should remain unchanged;

2.2 That the number of parish councillors on Northhill Parish Council be reduced to seven;

2.3 That the parish boundaries between Northhill and Biggleswade be redrawn to incorporate the Sainsbury's Supermarket, Tidy Tip and the properties 3 Bells Brook House and Numbers 1 to 18 Riverside Court: and

2.4 That a minor change be made to the boundary of the parish to exclude the parcel of land in between the parish boundaries of Moggerhanger and Sandy adjacent to the properties at Bridge Farm and Ivel Cottage.





## Old Warden

### 1 Background

Parish Ward	Seats	1 Sept 2017 Electorate	31 March 2023 Electorate	Ratio Electors to Seats	Variance from Average
Not Applicable	7	233	233	33	-90%

1.1 Old Warden parish has a Parish Council. It is unwarded and has 7 seats on the Council. There is no forecast development to March 2023.

1.2 The parish boundary adjoins the neighbouring parishes of Biggleswade, Haynes, Northill and Southill. The parish, together with the parishes of Moggerhanger, Northill and Southill are coterminous within the district ward of Northill.

1.3 Neither the Parish Council nor the public submitted a response to the invitation of initial submissions.

1.4 Whilst the 2011 elections were uncontested with 6 nominations and the 2015 elections were contested with 8 nominations the National Association of Local Councils considers that the practical minimum number of parish councillors should be seven.

1.5 The overall projected electorate growth over 5 years is nil.

### 2 Draft Recommendations

2.1 That the parish name of Old Warden should remain unchanged;

2.2 That the number of parish councillors on Old Warden Parish Council remain unchanged (seven); and

2.3 That no change should be made to the parish boundary of Old Warden.



## Potsgrove

### 1 Background

Parish Ward	Seats	1 Sept 2017 Electorate	31 March 2023 Electorate	Ratio Electors to Seats	Variance from Average
Not Applicable	N/A	37	37	N/A	

1.1 Potsgrove is one of the seven parishes which do not have a Council but meets as a parish meeting.

1.2 The parish boundary adjoins the neighbouring parishes of Battlesden, Heath & Reach, Milton Bryan and Woburn. The parish, together with the parishes of Aspley Guise, Aspley Heath, Battlesden, Eversholt, Husborne Crawley, Milton Bryan and Woburn are coterminous within the district ward of Aspley & Woburn.

1.3 There are only 18 properties and 37 electors in the parish and there is no anticipated growth over the next 5 years. The parish operates as a parish meeting and has a relatively strong sense of identity.

1.4 The Parish Meeting nor the public submitted a response to the invitation of initial submissions.

1.5 The overall projected electorate growth over 5 years is nil.

### 2 Draft Recommendations

2.1 That the parish name of Potsgrove should remain unchanged;

2.2 That the parish should not have a parish council; and

2.3 That no change should be made to the parish boundary of Potsgrove.

# Potton

## 1 Background

Parish Ward	Seats	1 Sept 2017 Electorate	31 March 2023 Electorate	Ratio Electors to Seats	Forecast Ratio Electors to Seats	Variance from Average
Not Applicable	15	3948	4592	263	306	-4%

1.1 Potton parish has a Town Council. It is unwarded and has 15 seats on the Council. The forecast development to March 2023 is estimated at a further 379 dwellings.

1.2 The parish boundary adjoins the neighbouring parishes of Everton, Sandy, Sutton and Wrestlingworth & Cockayne Hatley. The parish, together with the parishes of Dunton, Edworth, Everton, Eyeworth, Tempsford, Sutton and Wrestlingworth & Cockayne Hatley are coterminous within the district ward of Potton.

1.3 The Parish Council did not submit a response to the invitation of initial submissions. However, 4 online response were received from the public which can be found at <http://www.centralbedfordshire.gov.uk/council/consultations/results.aspx>.

1.4 Whilst the 2011 elections were uncontested with 11 nominations and the 2015 elections were contested with 16 nominations it is not considered appropriate to recommend a reduction in the number of councillors when taking into account the considerable amount of planned development.

1.5 The overall projected electorate growth over 5 years is 16.3%.

## 2 Draft Recommendations

2.1 That the parish name of Potton should remain unchanged;

2.2 That the number of parish councillors on Potton Town Council remain unchanged (fifteen); and

2.3 That no change should be made to the parish boundary of Potton.

# Pulloxhill

## 1 Background

Parish Ward	Seats	1 Sept 2017 Electorate	31 March 2023 Electorate	Ratio Electors to Seats	Forecast Ratio Electors to Seats	Variance from Average
Not Applicable	7	835	837	120	120	-62%

1.1 Pulloxhill parish has a Parish Council. It is unwarded and has 7 seats on the Council. The forecast development to March 2023 is estimated at a further 1 dwelling.

1.2 The parish boundary adjoins the neighbouring parishes of Barton-le-Clay, Flitton & Greenfield, Harlington, Silsoe and Westoning. The parish, together with the parishes of Flitton & Greenfield, Tingrith and Westoning are coterminous within the district ward of Westoning, Flitton & Greenfield.

1.3 The Parish Council did not submit a response to the invitation of initial submissions. However, 1 online response received from the public proposed that the style of the Council be changed to Village Council, which can be found at <http://www.centralbedfordshire.gov.uk/council/consultations/results.aspx>.

1.4 While the 2011 and the 2015 elections were uncontested with 7 nominations in 2011 and only 3 nominations in 2015 the National Association of Local Councils considers that the practical minimum number of parish councillors should be seven.

1.5 The overall projected electorate growth over 5 years is 0.2%.

## 2 Draft Recommendations

2.1 That the parish name of Pulloxhill should remain unchanged;

2.2 That the number of parish councillors on Pulloxhill Parish Council remain unchanged (seven); and

2.3 That no change should be made to the parish boundary of Pulloxhill.

## Ridgmont

### 1 Background

Parish Ward	Seats	1 Sept 2017 Electorate	31 March 2023 Electorate	Ratio Electors to Seats	Forecast Ratio Electors to Seats	Variance from Average
Not Applicable	9	359	362	40	40	-88%

1.1 Ridgmont parish has a Parish Council. It is unwarded and has 9 seats on the Council. The forecast development to March 2023 is estimated at a further 2 dwellings.

1.2 The parish boundary adjoins the neighbouring parishes of Brogborough, Eversholt, Husborne Crawley, Steppingley, Lidlington and Woburn. The parish, together with the parishes of Brogborough, Cranfield, Hulcote & Salford, Lidlington, Marston Moretaine and Millbrook are coterminous within the district ward of Cranfield.

1.3 The submissions from the Parish Council to reduce the number of councillors together with the 3 online responses that were received from the public can be found at <http://www.centralbedfordshire.gov.uk/council/consultations/results.aspx>

1.4 The 2011 elections were contested with 10 nominations. However, the 2015 elections were uncontested with only 5 nominations. Consequently, and notwithstanding the 3 submissions from the public to retain the current number of councillors, it is recommended that the number of councillors be reduced to 7 which would have the effect of increasing the ratio of electors to seats to 52 (-84% variance from average).

1.5 The overall projected electorate growth over 5 years is 0.8%.

### 2 Draft Recommendations

2.1 That the parish name of Ridgmont should remain unchanged;

2.2 That the number of parish councillors on Ridgmont Parish Council be reduced to seven; and

2.3 That no change should be made to the parish boundary of Ridgmont.



## Sandy

### 1 Background

Parish Ward	Seats	1 Sept 2017 Electorate	31 March 2023 Electorate	Ratio Electors to Seats	Forecast Ratio Electors to Seats	Variance from Average
Beeston	1	679	679	679	679	+113%
Fallowfield	3	1534	1534	511	511	+60%
Ivel	5	2962	2962	592	592	+86%
Pinnacle	6	4124	4124	687	687	+115%

1.1 Sandy parish has a Town Council and is currently divided into 4 wards. Beeston ward with 1 Councillor, Fallowfield ward with 3 councillors, Ivel ward with 5 councillors and Pinnacle ward with 6 councillors. There is no forecast development to March 2023

1.2 The parish boundary adjoins the neighbouring parishes of Biggleswade, Blunham, Everton, Moggerhanger, Northill, Potton, Sutton and Tempsford. The parish, together with the parish of Blunham are coterminous within the district ward of Sandy.

1.3 The Town Council did not submit a response to the invitation of initial submissions. However, 5 online responses were received from the public which can be found at

<http://www.centralbedfordshire.gov.uk/council/consultations/results.aspx>

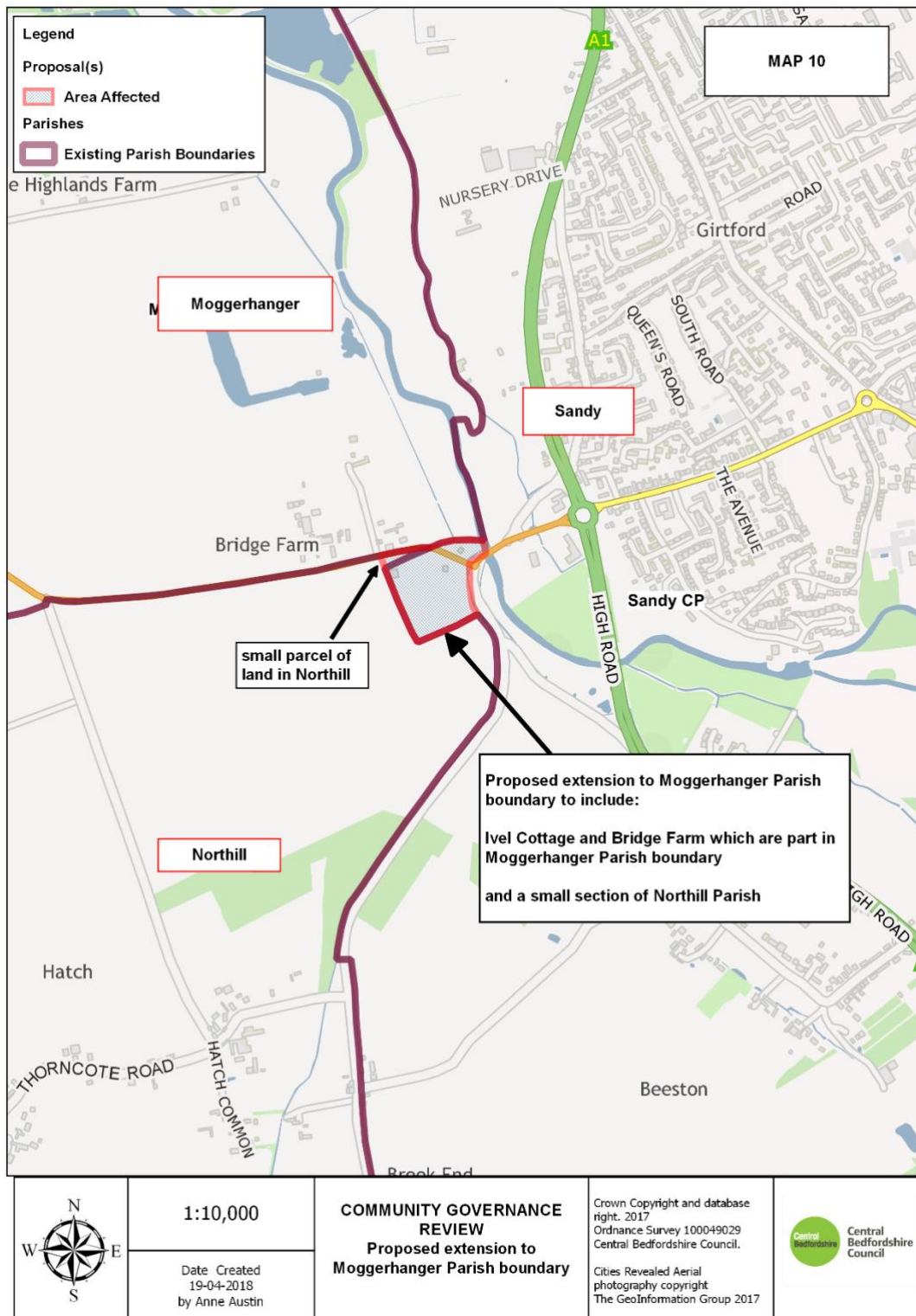
1.4 The development at 'Bridge Farm' and 'Ivel Cottage' in the south west of the parish have extended into the parish of Sandy. It is therefore recommended that this anomaly is corrected by formally incorporating the relevant properties into the parish of Moggerhanger (shown at Map 10).

1.5 The 2011 elections were contested in Fallowfield ward with 4 nominations and in the Ivel ward with 8 nominations. However, the elections in both the Beeston and Pinnacle wards were uncontested with 1 and 5 nominations respectively. The 2015 elections were all uncontested with 1 nomination for Beeston, 3 for Fallowfield, 4 for Ivel and 3 for Pinnacle which would suggest that a review of the number of councillors would be appropriate. However, when considering the mixed online responses and the forecast ratio of electors to seats, any reduction in councillor numbers would not be beneficial.

1.6 The overall projected electorate growth over 5 years is nil.

## **2 Draft Recommendations**

- 2.1 That the parish name of Sandy should remain unchanged;
- 2.2 That the number of parish councillors on Sandy Town Council remain unchanged (fifteen); and
- 2.3 That the boundary of the parish be changed to exclude the properties at Bridge Farm and Ivel Cottage.



# Shefford

## 1 Background

Parish Ward	Seats	1 Sept 2017 Electorate	31 March 2023 Electorate	Ratio Electors to Seats	Forecast Ratio Electors to Seats	Variance from Average
Not Applicable	15	5076	5368	338	358	+12%

1.1 Shefford parish has a Town Council. It is unwarded and has 15 seats on the Council. The forecast development to March 2023 is estimated at a further 172 dwellings.

1.2 The parish boundary adjoins the neighbouring parishes of Campton & Chicksands, Clifton, Meppershall and Southill. The parish, together with the parishes of Campton & Chicksands and Meppershall are coterminous within the district ward of Shefford.

1.3 The submissions from the Town Council and a CBC Shefford ward councillor to extend the parish boundary together with the 6 online responses that were received from the public can be found at

<http://www.centralbedfordshire.gov.uk/council/consultations/results.aspx>

However, both submissions were rejected as being contrary to the Terms of Reference.

1.4 Whilst the 2011 and the 2015 elections were uncontested with 13 nominations in 2011 and 12 nominations in 2015 it is not considered appropriate to recommend a reduction in the number of councillors when taking into account the mixed online responses and the amount of planned development.

1.5 The overall projected electorate growth over 5 years is 5.8%.

## 2 Draft Recommendations

2.1 That the parish name of Shefford should remain unchanged;

2.2 That the number of parish councillors on Shefford Town Council remain unchanged (fifteen); and

2.3 That no change should be made to the parish boundary of Shefford.

.

# Shillington

## 1 Background

Parish Ward	Seats	1 Sept 2017 Electorate	31 March 2023 Electorate	Ratio Electors to Seats	Forecast Ratio Electors to Seats	Variance from Average
Not Applicable	10	1619	1646	162	165	-48%

1.1 Shillington parish has a Parish Council. It is unwarded and has 10 seats on the Council. The forecast development to March 2023 is estimated at a further 16 dwellings.

1.2 The parish boundary adjoins the neighbouring parishes of Barton-le-Clay, Gravenhurst, Meppershall and Stondon. The parish, together with the parishes of Gravenhurst and Silsoe are coterminous within the district ward of Silsoe & Shillington.

1.3 The Parish Council did not submit a response to the invitation of initial submissions. However, 1 online response was received from the public which can be found at

<http://www.centralbedfordshire.gov.uk/council/consultations/results.aspx>.

1.4 The 2011 elections were uncontested with 10 nominations. However, the 2015 elections were contested with 11 nominations. Nevertheless, and notwithstanding the 1 submission from the public to retain the current number of councillors, it is recommended that the number of councillors be reduced to 7 which would have the effect of increasing the ratio of electors to seats to 235 (-26% variance from average).

1.5 The overall projected electorate growth over 5 years is 1.7%.

## 2 Draft Recommendations

2.1 That the parish name of Shillington should remain unchanged;

2.2 That the number of parish councillors on Shillington Parish Council be reduced to seven; and

2.3 That no change should be made to the parish boundary of Shillington.

## Silsoe

### 1 Background

Parish Ward	Seats	1 Sept 2017 Electorate	31 March 2023 Electorate	Ratio Electors to Seats	Forecast Ratio Electors to Seats	Variance from Average
Not Applicable	10	2296	2344	230	234	-27%

1.1 Silsoe has a Parish Council. It is unwarded and has 10 seats on the Council. The forecast development to March 2023 is estimated at a further 28 dwellings.

1.2 The parish boundary adjoins the neighbouring parishes of Clophill, Flitton and Greenfield, Gravenhurst, Maulden and Pulloxhill. The parish, together with the parishes of Gravenhurst and Shillington are coterminous within the district ward of Silsoe & Shillington.

1.3 The Parish Council did not submit a response to the invitation of initial submissions. However, 2 online responses were received from the public which can be found at

<http://www.centralbedfordshire.gov.uk/council/consultations/results.aspx>.

1.4 The 2011 and the 2015 elections were uncontested with 9 nominations in 2011 and 8 nominations in 2015. Consequently, and notwithstanding the 2 mixed submissions from the public to both reduce and retain the current number of councillors, it is recommended that the number of councillors be reduced to 7 which would have the effect of increasing the ratio of electors to seats to 335 (+5% variance from average).

1.5 The overall projected electorate growth over 5 years is 2.1%.

### 2 Draft Recommendations

2.1 That the parish name of Silsoe should remain unchanged;

2.2 That the number of parish councillors on Silsoe Parish Council be reduced to seven; and

2.3 That no change should be made to the parish boundary of Silsoe.

## Slip End

### 1 Background

Parish Ward	Seats	1 Sept 2017 Electorate	31 March 2023 Electorate	Ratio Electors to Seats	Variance from Average
Not Applicable	7	1511	1511	216	-32.3%

1.1 Slip End parish has a Parish Council. It is unwarded and has 7 seats on the Council. There is no forecast development to March 2023

1.2 The parish boundary adjoins the neighbouring parishes of Caddington and Hyde. The parish, together with the parishes of Caddington, Hyde, Kensworth, Studham and Whipsnade are coterminous within the district ward of Caddington, Hyde and Slip End.

1.3 The Parish Council did not submit a response to the invitation of initial submissions. However, 1 online response was received from the public which can be found at <http://www.centralbedfordshire.gov.uk/council/consultations/results.aspx>

1.4 While the 2011 elections were contested with 8 nominations and the 2015 elections were uncontested with 7 nominations the National Association of Local Councils considers that the practical minimum number of parish councillors should be seven.

1.5 The overall projected electorate growth over 5 years is nil.

### 2 Draft Recommendations

2.1 That the parish name of Slip End should remain unchanged;

2.2 That the number of parish councillors on Slip End Parish Council remain unchanged (seven); and

2.3 That no change should be made to the parish boundary of Slip End.

## Southill

### 1 Background

Parish Ward	Seats	1 Sept 2017 Electorate	31 March 2023 Electorate	Ratio Electors to Seats	Forecast Ratio Electors to Seats	Variance from Average
Broom	6	490	495	82	83	-74%
Southill	3	268	270	89	90	-72%
Stanford	3	212	214	71	71	-78%

1.1 Southill parish has a Parish Council and is currently divided into 3 wards. Broom ward with 6 councillors and Southill and Stanford wards with 3 councillors each. The forecast development to March 2023 is estimated at a further 3 dwellings in the Broom ward and 1 dwelling in each of the Southill and Stanford wards.

1.2 The parish boundary adjoins the neighbouring parishes of Biggleswade, Campton & Chicksands, Clifton, Haynes, Langford, Old Warden and Shefford. The parish, together with the parishes of Moggerhanger, Northill and Old Warden are coterminous within the district ward of Northill.

1.3 Neither the Parish Council nor the public submitted a response to the invitation of initial submissions.

1.4 The 2011 and the 2015 elections were uncontested in all the wards with 5 nominations for the Broom ward, 3 for Southill and 2 for Stanford in 2011 and 3 for Broom, 2 for Southill and 3 for Stanford in 2015. Consequently, it is recommended that the number of councillors be reduced to 8 (4 for Broom ward and 2 each for Southill and Stanford wards) which would have the effect of increasing the ratio of electors to seats to 123 for Broom ward (-61% variance from average), 135 for Southill ward (-58% variance from average) and 107 for Stanford ward (-67% variance from average).

1.5 The overall projected electorate growth over 5 years is 0.9%.

### 2 Draft Recommendations

2.1 That the parish name of Southill should remain unchanged;

2.2 That the number of parish councillors on Southill Parish Council be reduced to eight (Broom (4), Southill (2) and Stanford (2)); and

2.3 That no change should be made to the parish boundary of Southill.



# Stanbridge

## 1 Background

Parish Ward	Seats	1 Sept 2017 Electorate	31 March 2023 Electorate	Ratio Electors to Seats	Forecast Ratio Electors to Seats	Variance from Average
Not Applicable	7	615	623	88	89	-72%

1.1 Stanbridge parish has a Parish Council. It is unwarded and has 7 seats on the Council. The forecast development to March 2023 is estimated at a further 5 dwellings.

1.2 The parish boundary adjoins the neighbouring parishes of Eaton Bray, Eggington, Great Billington, Tilsworth and Totternhoe. The parish, together with the parishes of Chalgrave, Eggington, Heath & Reach, Hockliffe and Tilsworth are coterminous within the district ward of Heath & Reach.

1.3 Neither the Parish Council nor the public submitted a response to the invitation of initial submissions.

1.4 Whilst the 2011 and the 2015 elections were uncontested with only 2 nominations in 2011 and 5 nominations in 2015 the National Association of Local Councils considers that the practical minimum number of parish councillors should be seven.

1.5 The overall projected electorate growth over 5 years is 1.3%.

## 2 Draft Recommendations

2.1 That the parish name of Stanbridge should remain unchanged;

2.2 That the number of parish councillors on Stanbridge Parish Council remain unchanged (seven); and

2.3 That no change should be made to the parish boundary of Stanbridge.

# Steppingley

## 1 Background

Parish Ward	Seats	1 Sept 2017 Electorate	31 March 2023 Electorate	Ratio Electors to Seats	Variance from Average
Not Applicable	7	172	172	25	-92%

1.1 Steppingley parish has a Parish Council. It is unwarded and has 7 seats on the Council. There is no forecast development to March 2023.

1.2 The parish boundary adjoins the neighbouring parishes of Ampthill, Eversholt, Flitwick, Millbrook and Ridgmont. The parish, together with the parish of Flitwick are coterminous within the district ward of Flitwick.

1.3 Neither the Parish Council nor the public submitted a response to the invitation of initial submissions.

1.4 Whilst the 2011 elections were contested with 8 nominations and the 2015 elections were uncontested with 6 nominations the National Association of Local Councils considers that the practical minimum number of parish councillors should be seven.

1.5 The overall projected electorate growth over 5 years is nil.

## 2 Draft Recommendations

2.1 That the parish name of Steppingley should remain unchanged;

2.2 That the number of parish councillors on Steppingley Parish Council remain unchanged (seven); and

2.3 That no change should be made to the parish boundary of Steppingley.

## Stondon

### 1 Background

Parish Ward	Seats	1 Sept 2017 Electorate	31 March 2023 Electorate	Ratio Electors to Seats	Forecast Ratio Electors to Seats	Variance from Average
Not Applicable	10	2125	2302	213	230	-27.9%

1.1 Stondon parish has a Parish Council. It is unwarded and has 10 seats on the Council. The forecast development to March 2023 is estimated at a further 104 dwellings.

1.2 The parish boundary adjoins the neighbouring parishes of Henlow, Meppershall and Shillington. The parish, together with the parishes of Arlesey, Clifton and Henlow are coterminous within the district ward of Arlesey.

1.3 The submissions from the Parish Council to extend the parish boundary together with the 66 online responses that were received from the public can be found at <http://www.centralbedfordshire.gov.uk/council/consultations/results.aspx>

1.4 The survey carried out by the Parish Council to extend the parish boundary into the parish of Henlow generated considerable but mixed responses. Moreover, such a proposal would require a separate governance review which invited a response from every household in both effected parishes. The scale of the proposal would involve the transfer of some 734 properties with a substantial effect on both parish precepts. Therefore, it was not considered appropriate to include this proposal as part of the current review.

1.5 The 2011 elections were contested with 12 nominations and the 2015 elections were uncontested with 9 nominations. Consequently, and notwithstanding the mixed submissions from the public to both reduce and retain the current number of councillors, it is recommended that the number of councillors be reduced to 7 which would have the effect of increasing the ratio of electors to seats to 328 (+2.8% variance from average).

1.6 The overall projected electorate growth over 5 years is 8.3%.

### 2 Draft Recommendations

2.1 That the parish name of Stondon should remain unchanged;

2.2 That the number of parish councillors on Stondon Parish Council be reduced to seven; and

2.3 That no change should be made to the parish boundary of Stondon.

# Stotfold

## 1 Background

Parish Ward	Seats	1 Sept 2017 Electorate	31 March 2023 Electorate	Ratio Electors to Seats	Forecast Ratio Electors to Seats	Variance from Average
Not Applicable	15	6787	6988	452	466	+46%

1.1 Stotfold parish has a Town Council. It is unwarded and has 15 seats on the Council. The forecast development to March 2023 is estimated at a further 118 dwellings.

1.2 The parish boundary adjoins the neighbouring parishes of Arlesey, Astwick and Fairfield. The parish, together with the parishes of Astwick, Fairfield and Langford are coterminous within the district ward of Stotfold & Langford.

1.3 The Town Council did not submit a response to the invitation of initial submissions. However, 4 online mixed responses received from the public can be found at

<http://www.centralbedfordshire.gov.uk/council/consultations/results.aspx>.

1.4 Whilst the 2011 and the 2015 elections were uncontested with 14 nominations in 2011 and 13 nominations in 2015 it is not considered appropriate to recommend a reduction in the number of councillors when taking into account the amount of planned development.

1.5 The overall projected electorate growth over 5 years is 3%.

## 2 Draft Recommendations

2.1 That the parish name of Stotfold should remain unchanged;

2.2 That the number of parish councillors on Stotfold Town Council remain unchanged (fifteen); and

2.3 That no change should be made to the parish boundary of Stotfold.

## **Streatley**

### **1 Background**

Parish Ward	Seats	1 Sept 2017 Electorate	31 March 2023 Electorate	Ratio Electors to Seats	Variance from Average
Not Applicable	7	1384	1384	198	-37.9%

1.1 Streatley parish has a Parish Council. It is unwarded and has 7 seats on the Council. There is no forecast development to March 2023.

1.2 The parish boundary adjoins the neighbouring parishes of Barton-Le-Clay, Harlington and Sundon. The parish, together with the parishes of Chalton, Harlington, Sundon and Toddington are coterminous within the district ward of Toddington.

1.3 Neither the Parish Council nor the public submitted a response to the invitation of initial submissions.

1.4 Whilst the 2011 and the 2015 elections were uncontested with 6 nominations in 2011 and only 5 nominations in 2015 the National Association of Local Councils considers that the practical minimum number of parish councillors should be seven.

1.5 The overall projected electorate growth over 5 years is nil.

### **2 Draft Recommendations**

2.1 That the parish name of Streatley should remain unchanged;

2.2 That the number of parish councillors on Streatley Parish Council remain unchanged (seven); and

2.3 That no change should be made to the parish boundary of Streatley.

## Studham

### 1 Background

Parish Ward	Seats	1 Sept 2017 Electorate	31 March 2023 Electorate	Ratio Electors to Seats	Forecast Ratio Electors to Seats	Variance from Average
Not Applicable	7	1002	1033	143	148	-54%

1.1 Studham parish has a Parish Council. It is unwarded and has 7 seats on the Council. The forecast development to March 2023 is estimated at a further 18 dwellings.

1.2 The parish boundary adjoins the neighbouring parish Whipsnade. The parish, together with the parishes of Caddington, Hyde, Kensworth, Slip End and Whipsnade are coterminous within the district ward of Caddington, Hyde and Slip End.

1.3 The Parish Council did not submit a response to the invitation of initial submissions. However, 2 online responses were received from the public which can be found at <http://www.centralbedfordshire.gov.uk/council/consultations/results.aspx>.

1.4 Whilst the 2011 and the 2015 elections were uncontested with only 5 nominations in 2011 and 7 nominations in 2015 the National Association of Local Councils considers that the practical minimum number of parish councillors should be seven.

1.5 The overall projected electorate growth over 5 years is 3%.

### 2 Draft Recommendations

2.1 That the parish name of Studham should remain unchanged;

2.2 That the number of parish councillors on Studham Parish Council remain unchanged (seven); and

2.3 That no change should be made to the parish boundary of Studham.

## Sundon

### 1 Background

Parish Ward	Seats	1 Sept 2017 Electorate	31 March 2023 Electorate	Ratio Electors to Seats	Forecast Ratio Electors to Seats	Variance from Average
Not Applicable	7	371	373	53	53	-83%

1.1 Sundon parish has a Parish Council. It is unwarded and has 7 seats on the Council. The forecast development to March 2023 is estimated at a further 1 dwelling.

1.2 The parish boundary adjoins the neighbouring parishes of Chalton, Harlington, Streatley and Toddington. The parish, together with the parishes of Chalton, Harlington, Streatley and Toddington are coterminous within the district ward of Toddington.

1.3 Neither the Parish Council nor the public submitted a response to the invitation of initial submissions.

1.4 While the 2011 and the 2015 elections were uncontested with 6 nominations in 2011 and only 4 nominations in 2015 the National Association of Local Councils considers that the practical minimum number of parish councillors should be seven.

1.5 The overall projected electorate growth over 5 years is 0.5%.

### 2 Draft Recommendations

2.1 That the parish name of Sundon should remain unchanged;

2.2 That the number of parish councillors on Sundon Parish Council remain unchanged (seven); and

2.3 That no change should be made to the parish boundary of Sundon.

## Sutton

### 1 Background

Parish Ward	Seats	1 Sept 2017 Electorate	31 March 2023 Electorate	Ratio Electors to Seats	Forecast Ratio Electors to Seats	Variance from Average
Not Applicable	7	234	237	34	34	-89%

1.1 Sutton parish has a Parish Council. It is unwarded and has 7 seats on the Council. The forecast development to March 2023 is estimated at a further 2 dwellings.

1.2 The parish boundary adjoins the neighbouring parishes of Biggleswade, Dunton, Eyeworth, Potton, Sandy and Wrestlingworth & Cockayne Hatley. The parish, together with the parishes of Dunton, Edworth, Everton, Eyeworth, Potton, Tempsford and Wrestlingworth & Cockayne Hatley are coterminous within the district ward of Potton.

1.3 The submission from the Parish Council recommended that no changes be made and there were no responses from the public.

1.4 While the 2011 elections were contested with 8 nominations and the 2015 elections were uncontested with 7 nominations the National Association of Local Councils considers that the practical minimum number of parish councillors should be seven.

1.5 The overall projected electorate growth over 5 years is 1.3%.

### 2 Draft Recommendations

2.1 That the parish name of Sutton should remain unchanged;

2.2 That the number of parish councillors on Sutton Parish Council remain unchanged (seven); and

2.3 That no change should be made to the parish boundary of Sutton.



# Tempsford

## 1 Background

Parish Ward	Seats	1 Sept 2017 Electorate	31 March 2023 Electorate	Ratio Electors to Seats	Forecast Ratio Electors to Seats	Variance from Average
Not Applicable	7	486	491	69	70	-78%

1.1 Tempsford parish has a Parish Council. It is unwarded and has 7 seats on the Council. The forecast development to March 2023 is estimated at a further 3 dwellings.

1.2 The parish boundary adjoins the neighbouring parishes of Blunham, Everton and Sandy. The parish, together with the parishes of Dunton, Edworth, Everton, Eyeworth, Potton, Sutton and Wrestlingworth & Cockayne Hatley are coterminous within the district ward of Potton.

1.3 Neither the Parish Council nor the public submitted a response to the invitation of initial submissions.

1.4 Whilst the 2011 elections were uncontested with 6 nominations and the 2015 elections were contested with 8 nominations the National Association of Local Councils considers that the practical minimum number of parish councillors should be seven.

1.5 The overall projected electorate growth over 5 years is 1%.

## 2 Draft Recommendations

2.1 That the parish name of Tempsford should remain unchanged;

2.2 That the number of parish councillors on Tempsford Parish Council remain unchanged (seven); and

2.3 That no change should be made to the parish boundary of Tempsford.

## Tilsworth

### 1 Background

Parish Ward	Seats	1 Sept 2017 Electorate	31 March 2023 Electorate	Ratio Electors to Seats	Forecast Ratio Electors to Seats	Variance from Average
Not Applicable	7	336	338	48	48	-85%

1.1 Tilsworth parish has a Parish Council. It is unwarded and has 7 seats on the Council. The forecast development to March 2023 is estimated at a further 1 dwelling.

1.2 The parish boundary adjoins the neighbouring parishes of Chalgrave, Houghton Regis, Hockliffe, Stanbridge and Totternhoe. The parish, together with the parishes of Chalgrave, Eggington, Heath & Reach, Hockliffe and Stanbridge are coterminous within the district ward of Heath & Reach.

1.3 Neither the Parish Council nor the public submitted a response to the invitation of initial submissions.

1.4 Whilst the 2011 and the 2015 elections were uncontested with 6 nominations in 2011 and only 3 nominations in 2015 the National Association of Local Councils considers that the practical minimum number of parish councillors should be seven.

1.5 The overall projected electorate growth over 5 years is 0.6%.

### 2 Draft Recommendations

2.1 That the parish name of Tilsworth should remain unchanged;

2.2 That the number of parish councillors on Tilsworth Parish Council remain unchanged (seven); and

2.3 That no change should be made to the parish boundary of Tilsworth.

## Tingrith

### 1 Background

Parish Ward	Seats	1 Sept 2017 Electorate	31 March 2023 Electorate	Ratio Electors to Seats	Variance from Average
Not Applicable	N/A	131	131	N/A	

1.1 Tingrith is one of the seven parishes which do not have a Council but meets as a parish meeting. There is no forecast development to March 2023.

1.2 The parish boundary adjoins the neighbouring parishes of Eversholt, Flitwick, Toddington and Westoning. The parish, together with the parishes of Flitton & Greenfield, Pulloxhill and Westoning are coterminous within the district ward of Westoning and Flitton & Greenfield.

1.3 There are only 70 properties and 131 electors in the parish and there is no anticipated growth over the next 5 years. The parish operates as a parish meeting and has a relatively strong sense of identity.

1.4 Neither the Parish Meeting nor the public submitted a response to the invitation of initial submissions.

1.5 The overall projected electorate growth over 5 years is nil.

### 2 Draft Recommendations

2.1 That the parish name of Tingrith should remain unchanged;

2.2 That the parish should not have a parish council; and

2.3 That no change should be made to the parish boundary of Tingrith.

# Toddington

## 1 Background

Parish Ward	Seats	1 Sept 2017 Electorate	31 March 2023 Electorate	Ratio Electors to Seats	Variance from Average
Not Applicable	11	3648	3648	332	+4%

1.1 Toddington parish has a Parish Council. It is unwarded and has 11 seats on the Council. There is no forecast development to March 2023.

1.2 The parish boundary adjoins the neighbouring parishes of Battlesden, Chalton, Chalgrave, Milton Bryan, Harlington, Sundon, Tingrith and Westoning. The parish, together with the parishes of Chalton, Harlington, Streatley and Sundon are coterminous within the district ward of Toddington.

1.3 The Parish Council did not submit a response to the invitation of initial submissions. However, 1 online response was received from the public which can be found at

<http://www.centralbedfordshire.gov.uk/council/consultations/results.aspx>.

1.4 The 2011 and the 2015 elections were uncontested with 9 nominations in 2011 and 11 nominations in 2015. Consequently, and notwithstanding the 1 submission from the public to retain the current number of councillors, it is recommended that the number of councillors be reduced to 9 which would have the effect of increasing the ratio of electors to seats to 405 (+27% variance from average).

1.5 The overall projected electorate growth over 5 years is nil.

## 2 Draft Recommendations

2.1 That the parish name of Toddington should remain unchanged;

2.2 That the number of parish councillors on Toddington Parish Council be reduced to nine; and

2.3 That no change should be made to the parish boundary of Toddington.

# Totternhoe

## 1 Background

Parish Ward	Seats	1 Sept 2017 Electorate	31 March 2023 Electorate	Ratio Electors to Seats	Variance from Average
Not Applicable	9	983	983	109	-66%

1.1 Totternhoe parish has a Parish Council. It is unwarded and has 9 seats on the Council. There is no forecast development to March 2023.

1.2 The parish boundary adjoins the neighbouring parishes of Dunstable, Eaton Bray, Houghton Regis, Kensworth, Stanbridge, Tilsworth and Whipsnade. The parish, together with the parishes of Great Billington and Eaton Bray are coterminous within the district ward of Heath & Reach.

1.3 The submissions from the Parish Council to increase the number of councillors together with the proposal to extend the boundaries and the 1 online response that was received from the public can be found at

<http://www.centralbedfordshire.gov.uk/council/consultations/results.aspx>

However, the submission was rejected as being contrary to the Terms of Reference.

1.4 The 2011 and the 2015 elections were uncontested with only 6 nominations in 2011 and 7 nominations in 2015. Consequently, and notwithstanding the submission from the parish council to increase and the member of the public to retain the current number of councillors, it is recommended that the number of councillors be reduced to 7 which would have the effect of increasing the ratio of electors to seats to 140 (-56% variance from average).

1.5 The overall projected electorate growth over 5 years is nil.

## 2 Draft Recommendations

2.1 That the parish name of Totternhoe should remain unchanged;

2.2 That the number of parish councillors on Totternhoe Parish Council be reduced to seven; and

2.3 That no change should be made to the parish boundary of Totternhoe.

## Westoning

### 1 Background

Parish Ward	Seats	1 Sept 2017 Electorate	31 March 2023 Electorate	Ratio Electors to Seats	Forecast Ratio Electors to Seats	Variance from Average
Not Applicable	10	1700	1703	170	170	-47%

1.1 Westoning parish has a Parish Council. It is unwarded and has 10 seats on the Council. The forecast development to March 2023 is estimated at a further 2 dwellings.

1.2 The parish boundary adjoins the neighbouring parishes of Flitton & Greenfield, Flitwick, Harlington, Pulloxhill, Tingrith and Toddington. The parish, together with the parishes of Flitton & Greenfield, Pulloxhill and Tingrith are coterminous within the district ward of Westoning, Flitton & Greenfield.

1.3 The Parish Council did not submit a response to the invitation of initial submissions. However, 1 online response was received from the public which can be found at <http://www.centralbedfordshire.gov.uk/council/consultations/results.aspx>

1.4 The 2011 and the 2015 elections were uncontested with 9 nominations in 2011 and 8 nominations in 2015. Consequently, and notwithstanding the 1 submission from the public to retain the current number of councillors, it is recommended that the number of councillors be reduced to 7 which would have the effect of increasing the ratio of electors to seats to 243 (-24% variance from average).

1.5 The overall projected electorate growth over 5 years is 0.2%.

### 2 Draft Recommendations

2.1 That the parish name of Westoning should remain unchanged;

2.2 That the number of parish councillors on Westoning Parish Council be reduced to seven; and

2.3 That no change should be made to the parish boundary of Westoning.

# Whipsnade

## 1 Background

Parish Ward	Seats	1 Sept 2017 Electorate	31 March 2023 Electorate	Ratio Electors to Seats	Forecast Ratio Electors to Seats	Variance from Average
Not Applicable	7	387	389	55	56	-82%

1.1 Whipsnade parish has a Parish Council. It is unwarded and has 7 seats on the Council. The forecast development to March 2023 is estimated at a further 1 dwelling.

1.2 The parish boundary adjoins the neighbouring parishes of Eaton Bray, Kensworth, Studham and Totternhoe. The parish, together with the parishes of Caddington, Hyde, Kensworth, Slip End and Studham are coterminous within the district ward of Caddington, Hyde and Slip End.

1.3 The Parish Council did not submit a response to the invitation of initial submissions. However, 1 online response recommending no changes was received from the public which can be found at <http://www.centralbedfordshire.gov.uk/council/consultations/results.aspx>

1.4 Whilst the 2011 and the 2015 elections were uncontested with 6 nominations in 2011 and 6 nominations in 2015 the National Association of Local Councils considers that the practical minimum number of parish councillors should be seven.

1.5 The overall projected electorate growth over 5 years is 0.5%.

## 2 Draft Recommendations

2.1 That the parish name of Whipsnade should remain unchanged;

2.2 That the number of parish councillors on Whipsnade Parish Council remain unchanged (seven); and

2.3 That no change should be made to the parish boundary of Whipsnade.

## Woburn

### 1 Background

Parish Ward	Seats	1 Sept 2017 Electorate	31 March 2023 Electorate	Ratio Electors to Seats	Forecast Ratio Electors to Seats	Variance from Average
Not Applicable	9	781	789	87	88	-72%

1.1 Woburn parish has a Parish Council. It is unwarded and has 7 seats on the Council. The forecast development to March 2023 is estimated at a further 5 dwellings.

1.2 The parish boundary adjoins the neighbouring parishes of Aspley Guise, Aspley Heath, Eversholt, Husborne Crawley, Milton Bryan and Pottsgrove. The parish, together with the parishes of Aspley Guise, Aspley Heath, Battlesden, Eversholt, Husborne Crawley, Milton Bryan and Pottsgrove are coterminous within the district ward of Aspley & Woburn.

1.3 Neither the Parish Council nor the public submitted a response to the invitation of initial submissions.

1.4 The 2011 and the 2015 elections were uncontested with 8 nominations in 2011 and 9 nominations in 2015. Consequently, it is recommended that the number of councillors be reduced to 7 which would have the effect of increasing the ratio of electors to seats to 113 (-65% variance from average).

1.5 The overall projected electorate growth over 5 years is 1%.

### 2 Draft Recommendations

2.1 That the parish name of Woburn should remain unchanged;

2.2 That the number of parish councillors on Woburn Parish Council be reduced to seven; and

2.3 That no change should be made to the parish boundary of Woburn.



# Wrestlingworth & Cockayne Hatley

## 1 Background

Parish Ward	Seats	1 Sept 2017 Electorate	31 March 2023 Electorate	Ratio Electors to Seats	Forecast Ratio Electors to Seats	Variance from Average
Not Applicable	7	642	654	92	93	-71%

1.1 Wrestlingworth and Cockayne Hatley parish has a Parish Council. It is unwarded and has 7 seats on the Council. The forecast development to March 2023 is estimated at a further 7 dwellings.

1.2 The parish boundary adjoins the neighbouring parishes of Eyeworth, Potton and Sutton. The parish, together with the parishes of Dunton, Edworth, Everton, Eyeworth, Potton, Sutton and Tempsford are coterminous within the district ward of Potton.

1.3 Neither the Parish Council nor the public submitted a response to the invitation of initial submissions.

1.4 Whilst the 2011 and the 2015 elections were uncontested with 6 nominations in 2011 and 7 nominations in 2015 the National Association of Local Councils considers that the practical minimum number of parish councillors should be seven.

1.5 The overall projected electorate growth over 5 years is 1.9%.

## 2 Draft Recommendations

2.1 That the parish name of Wrestlingworth & Cockayne Hatley should remain unchanged;

2.2 That the number of parish councillors on Wrestlingworth & Cockayne Hatley Parish Council remain unchanged (seven); and

2.3 That no change should be made to the parish boundary of Wrestlingworth & Cockayne Hatley.

# **Central Bedfordshire in contact**

**Find us online:** [www.centralbedfordshire.gov.uk/consultations](http://www.centralbedfordshire.gov.uk/consultations)

**Call:** 0300 300 4049

**Email:** [consultations@centralbedfordshire.gov.uk](mailto:consultations@centralbedfordshire.gov.uk)

**Write to:** Central Bedfordshire Council, Priory House,  
Monks Walk, Chicksands, Shefford, Bedfordshire SG17 5TQ