



YOUR CEREMONY IN
CENTRAL BEDFORDSHIRE



Milk Bottle Photography

Welcome to 'Your Ceremony in Central Bedfordshire'. This essential guide is designed to help you plan your celebration and make your day a special one.

Inside you will find information relating to the legal formalities required prior to your marriage or civil partnership registration, plus details of celebratory services available from the Registration Service.

You will also find details of premises licensed to hold civil marriages/partnership registrations in the District of Central Bedfordshire plus the Service's own approved premises.

LET US MAKE YOUR DAY SPECIAL

Planning your day is a very important event for both of you and for the Registration Service as we aim to make your day a very special, wonderful and memorable occasion.

It is hoped that this guide will give you the information you need to enable you to arrange your ceremony. Whatever you choose, whether it is an intimate ceremony with just yourselves and two witnesses, a small gathering or a grand celebration, we hope this guide will answer all your questions, but if you have any others we will always be pleased to provide further information and guidance.



Milk Bottle Photography

"Just a little note to say thank you for everything that you did on our wedding day - you put us both at ease & the service was even more than we had hoped!"



Milk Bottle Photography



Milk Bottle Photography

THE COUNTY OF BEDFORDSHIRE

With its southern border only 30 miles from London, the County of Bedfordshire is the gateway to the Midlands and East Anglia, easily accessible via excellent road and rail links together with airports at Luton and Cranfield. Set in a rich rural landscape, the county is an attractive place to live, work and visit. There are many areas of outstanding natural beauty and attractions, which include stately homes and gardens, fine restaurants and hotels, many of which are able to provide the perfect venue for your celebration.

The County of Bedfordshire is divided into three unitary authorities:

Bedford Borough Council
Central Bedfordshire Council
Luton Borough Council

Contact details for Central Bedfordshire Council:

Central Bedfordshire
Register Office
The Court House,
Woburn Street,
Amphill MK45 2HX.

Email: life.events@centralbedfordshire.gov.uk
Web: www.centralbedfordshire.gov.uk
Tel: 0300 300 8089



Milk Bottle Photography

"We just wanted to say a huge thank you for conducting such a lovely wedding ceremony for us on Saturday. Many people have commented how lovely it was, you made us feel at ease, and it felt very personal, so thank you ever so much!"



LinaandTom.com

THE REGISTRATION SERVICE (BIRTHS, MARRIAGES AND DEATHS)

Since 1837 there has been compulsory registration of births, deaths and marriages in the United Kingdom. Each local authority, by law, must provide this facility as well as the provision of a place licensed for civil (non-religious) marriage and a registrar available to register marriages at legally approved places of worship which do not hold their own register. The 1994 Marriage Act allows for the civil marriage ceremony to take place at locations approved by the Registration Service and this has given couples greater choice and flexibility in determining their wedding arrangements.

CIVIL PARTNERSHIP REGISTRATIONS

The Civil Partnership Act 2005 enables same sex couples to obtain legal recognition of their relationship. Every local authority is required to provide a facility for civil partnership registration from this date.

CONVERSION OF A CIVIL PARTNERSHIP TO A MARRIAGE

Same Sex couples now have the opportunity to convert their civil partnership to a marriage. For further information contact Central Bedfordshire at life.events@centralbedfordshire.gov.uk.



Warren Cooper Photography

"On the occasion of our marriage, we were all thrilled with the lovely atmosphere you created before, during and after the ceremony. Regards to both of you."



Abraxas Photography & Video



Abraxas Photography & Video

CHOOSING A CIVIL VENUE

You are able to choose between having your civil ceremony at any Register Office or Approved Premises in any district in England and Wales. When you have chosen where you want to hold your ceremony you must check its availability, then confirm with the Superintendent Registrar that Registration Officers will be available on that day and at that time to perform the ceremony. Please note that it is essential that you agree the date and time with the Superintendent Registrar and the venue before making any other arrangements.

Civil weddings or partnership ceremonies can take place in specially licensed hotels, restaurants, banqueting suites, stately homes and other historic buildings.

When you make your booking with the venue, check how much they will charge as costs vary from venue to venue. A fee is

also charged for the Registration Officers' attendance.

Couples having a ceremony at a venue must give notice of their intention to marry or enter into a civil partnership in the district, or districts where they live.

YOUR CEREMONY ABROAD

If you wish to marry abroad according to the laws of that country you must ensure that you understand and follow all the regulations. You will almost certainly be required to provide certain documents and in some instances a certificate of no impediment which is available from the Register Office. Your travel agent will be able to assist you in the first instance.

Civil Partnerships can only take place abroad if the country where you wish to have your ceremony recognises this type of partnership.



Abraxas Photography & Video

"Thank you for making our wedding day all we could have hoped for. Your kind and friendly nature and reassuring words were greatly received; helping to make our special day perfect."



Abraxas Photography & Video

GETTING MARRIED IN A CHURCH OR OTHER RELIGIOUS BUILDING

If you and your partner decide to be married in the Church of England you should contact the vicar. If he or she is able to marry you, arrangements will be made for banns to be called on three Sundays before the day of your ceremony or for a common licence to be issued and there is generally no need to involve the Superintendent Registrar. If you are getting married in any other church or religious building you will need to give a Notice of Marriage to the Superintendent Registrar of the district where you live.

The law relating to getting married in a religious building has not changed. You can only marry in a church in a different district to where you both live if either of you usually worship in that building.

You may get married in another district if there is no building of your religion in the district where either of you lives. Our staff will be glad to give you help and advice on this matter.

A Registrar from the district covering the building must be present at the wedding unless the governing body of the religious building has chosen to appoint its own Authorised Person to register its marriages instead of the Registrar.



Abraxas Photography & Video

"Please could you pass on our enormous thanks to the registrars for their part in our wedding on Sunday. They were both just delightful. We really felt the ceremony went very well indeed, it felt so personal and truly special and we could not have been happier."



Abraxas Photography & Video



Abraxas Photography & Video

LEGAL PRELIMINARIES - GIVING NOTICE OF YOUR INTENTION TO MARRY OR ENTER INTO A CIVIL PARTNERSHIP

Before you can marry in a civil ceremony or enter into a civil partnership in England and Wales, you both must give notice of your intention to do this and must have resided in a Registration District for at least seven days. If you live in different Registration Districts then each of you will need to give notice in your own area. Please note that notice cannot be given by a friend or relative. A non-refundable fee is payable for the giving of each notice.

The notice is a legal document and is valid for one year. 28 clear days must pass after giving notice before the marriage authority or civil partnership schedule can be issued and you are able to marry or enter into your civil partnership registration.

Please note that you cannot give notice until you have chosen your venue as the place of marriage/civil partnership is defined in the notice. You may give notice up to one year before the day of your marriage/civil partnership registration.

If English is not your first language, Registration Service staff will advise you whether an interpreter will need to be present when you give notice and at the ceremony.

DOCUMENTS YOU NEED TO PRODUCE

When giving notice of your intention to marry or enter into a civil partnership you will both need to provide documentation:

Proof of identity/nationality
Current passport

If you do not have a passport then please provide your full birth certificate.

Please note if you were born in the UK on or after 01/01/1983 and are providing your full birth certificate, you also need to provide evidence of the nationality of your parents at the time of your birth. The evidence required is either your mother's or father's full birth certificate or British passport. If you are presenting your father's birth certificate or passport you will also need to provide your parent's marriage certificate. If your mother has changed her name from that on your birth certificate you will also need to present evidence of her change of name.

If either of you have changed your name by deed poll, change of name deed or statutory declaration, we will also need to see the original documents.



Milk Bottle Photography

PROOF OF RESIDENCE

You should provide a proof of residence document, preferably driving licence or latest Council Tax bill or a utility bill dated within the last three months or a bank statement dated within the last month.

PREVIOUS MARRIAGE/ CIVIL PARTNERSHIP

If either of you has been divorced from a marriage or has obtained a dissolution from a previous civil partnership in this country, we will need to see the original Court Stamped Decree Absolute/ Dissolution.

If the divorce/dissolution took place in a foreign country we will need to see the original documents, plus an official English translation, if necessary. Please note, there

will be a charge for clearance for any divorce granted outside of the British Isles. Please ask the Registration Service for the current fee and this will be payable when you give your Notice. If either of you is a widow, widower or surviving civil partner, we will need to see a certified copy of your partner's death certificate and in some cases, your marriage/civil partnership certificate.

All divorce documents must be either the original document or copies certified by the issuing court. Some overseas divorces may have to be referred to the General Register Office, as the Registrar General will need to decide if the marriage can proceed. This may take some time, and time should be allowed for this. Please seek advice from the Superintendent Registrar of the district in which you will be giving notice, if you have foreign divorce documents that will need clearance in this way.

If either of you is under 18, we will need consent for you to marry / form a civil partnership. Ordinarily, this would be given by your parents or legal guardians, but

in some cases could be obtained through a court of law. Contact the Superintendent Registrar to obtain the consent forms.

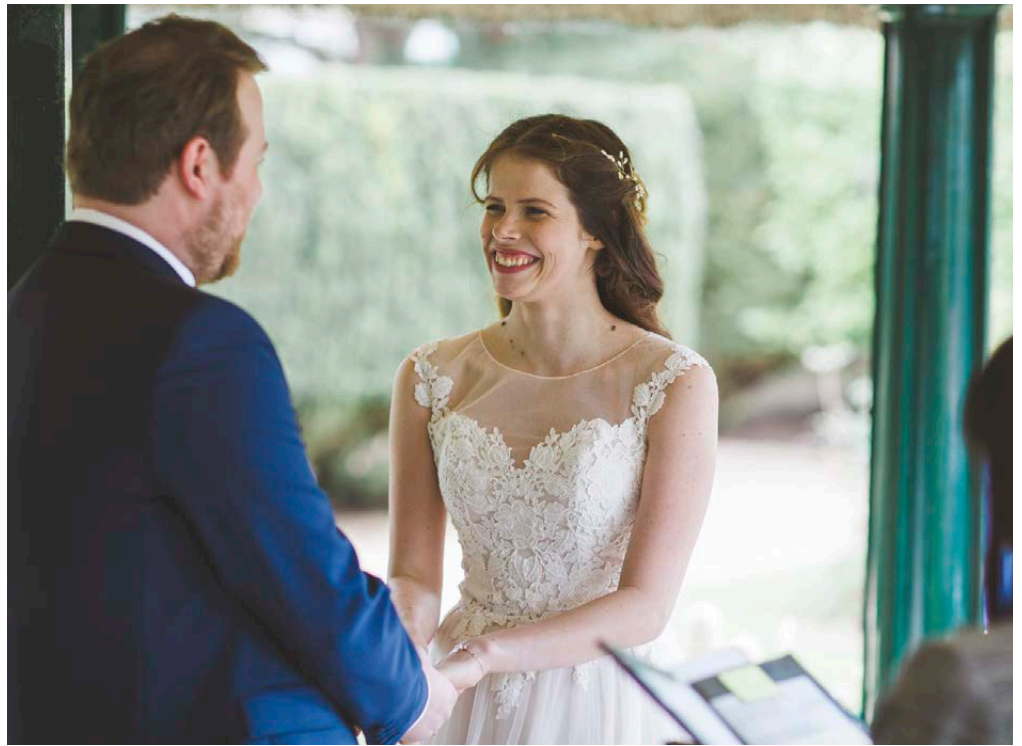
The notices of marriage or civil partnership must be publicly displayed in the Register Office for a minimum of 28 clear days before the authority allowing your marriage to proceed or schedule allowing your civil partnership registration to proceed, may be issued.

A marriage authority will be issued to each party to a marriage and if you are marrying outside the district where you gave notice you must ensure your authority has been issued.

Those forming a civil partnership will not be required to collect a schedule as this will be issued by the Registrar conducting your civil partnership registration.



Milk Bottle Photography



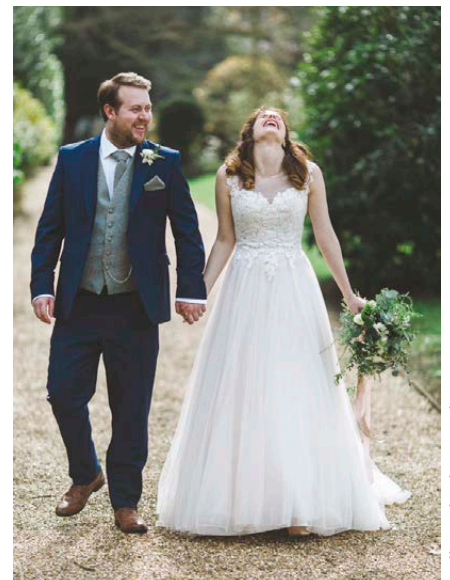
Milk Bottle Photography

ORGANISING YOUR DAY

Here are some ideas for you to consider:

You may wish to enhance your ceremony with music, readings and personal vows. These must have no religious connotations and must be submitted to the Superintendent Registrar for approval in advance of the ceremony.

For couples marrying, there are certain words prescribed by law (the contracting and declaratory words) which you must say. For couples wanting a civil partnership registration there is no requirement for you to make contracting or declaratory words but there is a choice of words that you may wish to say. The Registrar will talk to you about the choices available to you when you give notice, and will be pleased to discuss with you any additional vows you may like to make to each other.



Milk Bottle Photography

"We just wanted to say a big thank you for the lovely service you performed for us at The Swiss Gardens, Shuttleworth. We had a wonderful day and you helped make it very special."



Central Bedfordshire Register Office

LICENSED PREMISES OPERATED BY THE REGISTRATION SERVICE

The Registration Service for Central Bedfordshire provides licensed rooms for marriage ceremonies, civil partnership registrations and ceremonies and celebratory services.

Each room has a unique layout with varying amounts of car parking available depending on which office you choose.

Please note – numbers quoted for each room represent the maximum capacity and include the couple, witnesses, two registration personnel, guests, photographers, videographers, etc.

For further information contact The Central Bedfordshire Register Office on 0300 300 8089.

CENTRAL BEDFORDSHIRE REGISTER OFFICE

The Court House, Woburn Street,
Amphill MK45 2HX

Amphill is a small historic town with picturesque narrow streets lined with fine Georgian and Tudor architecture.

The Amphill Room is located in the former Magistrates' Court, a short distance from the town centre. The room is bright and airy, decorated in heather and grey with comfortable seating for 100, plenty of parking at the weekends and a grassed area for photographs.



Warren Cooper Photography

"Our sincere thanks to the two registrars that married us, they were brilliant and we really did have an enjoyable and beautiful service."



Biggleswade Registration Office



Dunstable Registration Office

BIGGLESWADE REGISTRATION OFFICE

The Limes, 142 London Road,
Biggleswade SG18 8EL

Situated near to the A1, Biggleswade was once an important coaching town and still has many historic pubs remaining. The offices are housed in modern premises a short distance from the town centre. The Biggleswade Room is attractively decorated in shades of jade green, and accommodates 50. There are unlimited parking facilities at weekends and gardens for photographs.

DUNSTABLE REGISTRATION OFFICE

(SUBJECT TO CHANGE)

Grove House, 76 High Street
North, Dunstable LU6 1NF

Dunstable is a historic market town with many old coaching inns. The Dunstable room is housed in a lovely 18th Century building on the A5 in the centre of town. The building itself retains many period features. The room can accommodate 35 persons maximum and is decorated in gold and cream tones. Grove House Gardens give a wonderful backdrop for wedding photographs.



Warren Cooper Photography

"The day was fantastic and the Registrars that attended were lovely, professional and made our roles of marrying each other very easy."



Esme Robinson, Leighton Buzzard Golf Club

LEIGHTON BUZZARD GOLF CLUB

(Licensed for civil ceremonies)

Located in wooded and parkland surrounds the golf club has gained a substantial reputation hosting the finest weddings, ceremonies and receptions. The clubhouse has flexible facilities with the main function room opening out onto a balcony with glorious views overlooking the course. Highly experienced hospitality and catering teams provide exceptional service, guiding you through the planning process and delivering your most special day.

For full details visit www.lbgc.co.uk or contact Damian to make an appointment: 01525 244800 or events@lbgc.co.uk.

Leighton Buzzard Golf Club,
Plantation Road, Leighton Buzzard, Beds LU7 3JF.

THE RUFUS CENTRE

(Licensed for civil ceremonies)

The Rufus Centre Wedding Suite offers a blank canvas that can be transformed into any theme or colour scheme to create the day of your dreams. The stunning ceiling canopy and sparkly curtain provide a perfect backdrop and the attractive Wedding Garden is ideal for arrival drinks, serving canapés and those all-important photographs.

There are several ceremony rooms to choose from and the venue can accommodate up to 200 guests.

The Rufus Centre
Steppingley Road, Flitwick, Bedfordshire MK45 1AH
Tel: 01525 631905
Email: bookings@therufuscentre.co.uk
Web: www.therufuscentre.co.uk



Gary Nunn Photography, The Rufus Centre



The Sculpture Gallery at Woburn Abbey

WEDDINGS AT WOBURN

(Licensed for civil ceremonies)

At the heart of the Woburn Estate and its 3,000 deer park sits The Sculpture Gallery, a majestic and elegant setting for weddings and civil ceremonies, for up to 250 guests. The Sculpture Gallery's private rose garden and terrace overlooking the Camellia House Lake provide a magnificent backdrop for your wedding photography.

The Woburn Hotel, located in the centre of Woburn village, is the perfect venue for romantic, intimate wedding ceremonies and receptions for up to 80 guests. With 4 AA stars and a 2 AA rosette restaurant Olivier's, The Woburn Hotel offers the ultimate gourmet wedding breakfast.

Woburn Abbey,
Woburn, Bedfordshire MK17 9WA.
Tel: 01525 292172
Email: sales@woburn.co.uk
Web: www.woburnweddings.co.uk

SHORTMEAD HOUSE

(Licensed for civil ceremonies)

At the heart of Shortmead is an elegant Georgian manor house with origins dating back to the early 16th century. Set within twenty four acres and on the northern edge of town, it's Biggleswade's best kept secret.

This gorgeous venue has everything you need to ensure your day is truly special, whether it's a formal event you're after or perhaps a more relaxed affair. The extensive grounds and lake are ideal for capturing scenic photos, and in the summer use of the gardens and grounds provide the perfect location for a larger celebration.

There are three licensed ceremony rooms: The Thatch, Regency Room and the Old Stables. The courtyard is popular for post wedding drinks and speeches. For the outdoor celebrations there are also two beautiful Capri marquees where you can host your wedding breakfast and evening celebration. To round off the day, retire to the beautiful Bridal Suite complete with its fabulous four poster bed.

With a wide choice of spaces for both your ceremony and reception, Shortmead easily excels at hosting occasions all year round.

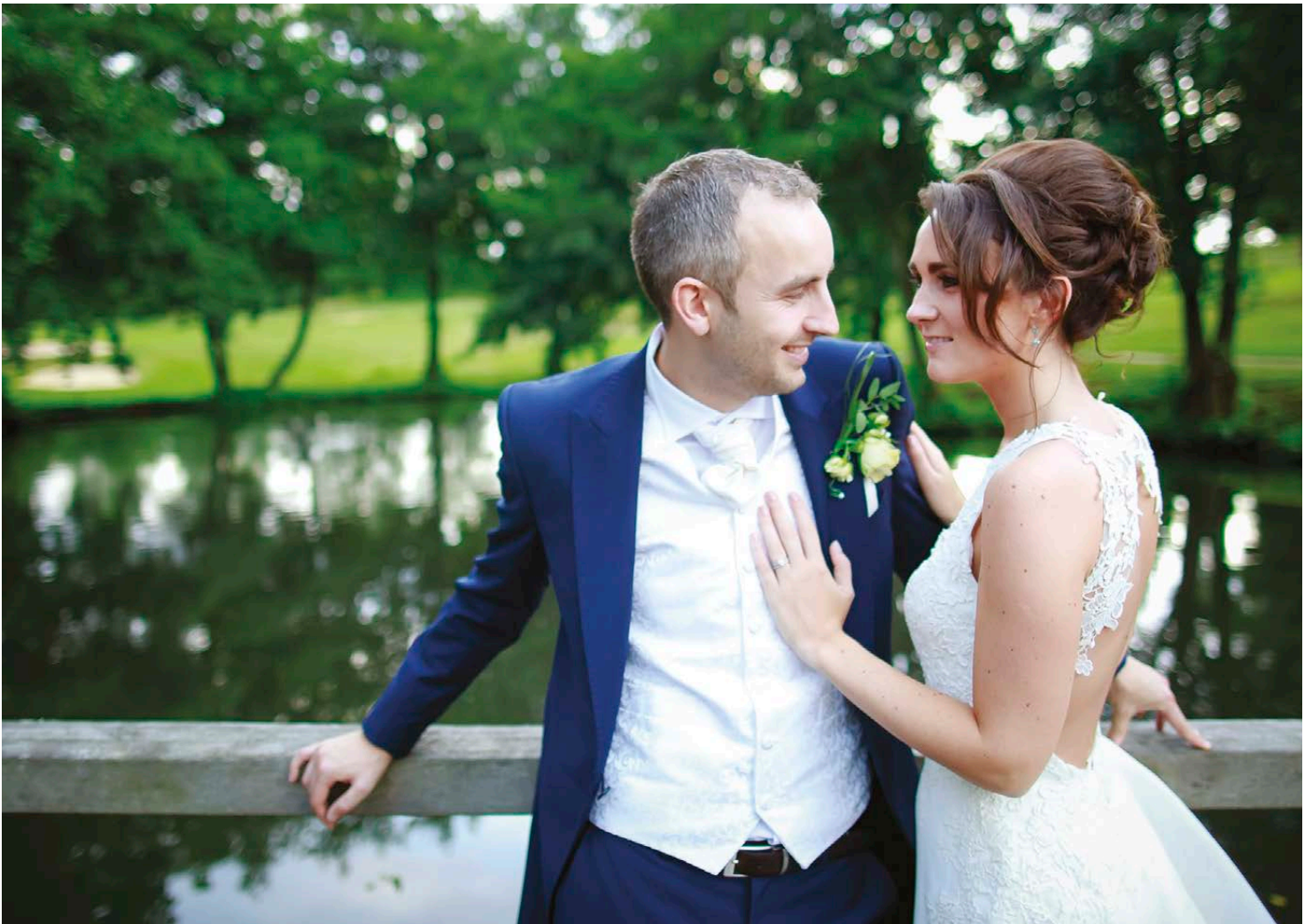
Shortmead House,
Shortmead Lane, Biggleswade, Bedfordshire SG18 0FG
Tel: 01767 313663
Email: hospitality@shortmead.com
Web: www.shortmead.com



Shortmead House



Warren Cooper Photography



Warren Cooper Photography

WREST PARK

(Licensed for civil ceremonies)

Built in the 19th century in the style of an elegant French chateau, Wrest Park's mansion house sits in 92 acres of far-reaching parkland and provides the perfect backdrop for an unforgettable wedding. With six magnificent rooms, including a stunning orangery, up to 170 guests will be impressed from the moment they step through the front doors and into the gilded staircase hall with its picture-perfect staircases.

Wrest Park, Silsoe, Bedfordshire MK45 4HR

Tel: 01525 863704

Email: WrestParkHospitality@english-heritage.org.uk

Web: www.english-heritage.org.uk/wrestweddings



Wrest Park



Hallmark Hotel Flitwick Manor

HALLMARK HOTEL FLITWICK MANOR

(Licensed for civil ceremonies)

A true classic Georgian country house, in a historic and beautiful setting dating back to Roman and Norman times, including a driveway bordered with lime trees reputed to be 250 years old. You will struggle to find a better venue to cater for your celebrations as well – come and sample the quality of the fine dining for yourselves, which has recently been awarded 2 AA rosettes.

The spacious honeymoon suite includes a four poster bed, kissing baths, private sauna and views over the Church and gardens. Catering for your every need, the professional team will ensure that every last detail is perfect. The hotel has the facilities and space to accommodate exclusive events of any size, from an intimate family gathering to a large formal dinner.

Hallmark Hotel Flitwick Manor,
Church Road, Flitwick, Bedfordshire MK45 1AE.
Tel: 01525 712242
Email: flitwick.sales@menzies-hotels.co.uk
Web: menzieshotels.co.uk

LA CRÈME DE LA CRÈME

Wedding celebrations are this caterers speciality. They offer the highest standards of cuisine, with a service tailored to your needs. Bespoke menus can be created to suite your personal preferences and budget. Running for over 15 years, you can expect "delicious, beautifully cooked" food served up by "wonderful" staff.

La Crème de La Crème,
4 Albany Road, Bedford MK40 3PH.

Tel: 01234 345097

Mob: 07776 723011

Email: info@lacremecatering.co.uk

Web: www.lacremecatering.co.uk



Steve Rideout Wedding Photography, La Crème de La Crème



Woburn Bridal

WOBURN BRIDAL

At Woburn Bridal, they pride themselves in giving you more than you dared dream from your wedding look. With a choice of beautiful, modern dresses, bespoke veils and alternative bridesmaid's dresses, their expertise and creativity helps you pull together an outfit that is uniquely you. You are exceptionally cared for every step of the way.

Woburn Bridal

Tel: 01525 290658

Email: info@woburnbridal.com

Web: www.woburnbridal.com



Woburn Bridal



Creations Flowers

CREATIONS FLOWERS

Creations Flowers understand your Wedding Day is unique to you and adopt a personal consultation process to ensure your wedding day flowers exceed your expectations on your truly magical day.

They use their creativity and attention to detail to provide everything from gorgeous bride bouquets, perfect bridesmaid posies, stylish buttonholes, beautiful wrist corsages to breathtaking table centre pieces.

Creations Flowers

Tel: 01462 851534

Tel: 01462 815995

Email: info@creationsflowers.co.uk

Web: www.creationsflowers.co.uk

ABRAXAS PHOTOGRAPHY, VIDEO AND DRONE FILMING

Providing a natural, informal and classic style of photography as well as cinematic wedding video and drone filming. Recommended at The Barns Hotel, The Sharnbrook Hotel, Woodland Manor, The Bedford Swan Hotel and several other wedding venues.

Abraxas Photography & Video
8 Orchard Street, Kempston, Bedford MK42 7JA
Tel: 01234 841912
Email: info@abraxasphoto.co.uk
Web: www.abraxasphoto.co.uk



Abraxas Photography & Video



Warren Cooper Photography

WARREN COOPER PHOTOGRAPHY

"We could not be more pleased with the stunning images that Warren captured so perfectly for our wedding. Right from the initial meeting and photo-shoot, Warren made us feel relaxed, at ease and in capable hands, and on the big day he was an absolute pleasure to have as part of our wedding. Photographs are really important to us and Warren's work was just outstanding - cannot recommend highly enough!" - Jo and Cam

Please get in touch with Warren if you need a Photographer for your big day!

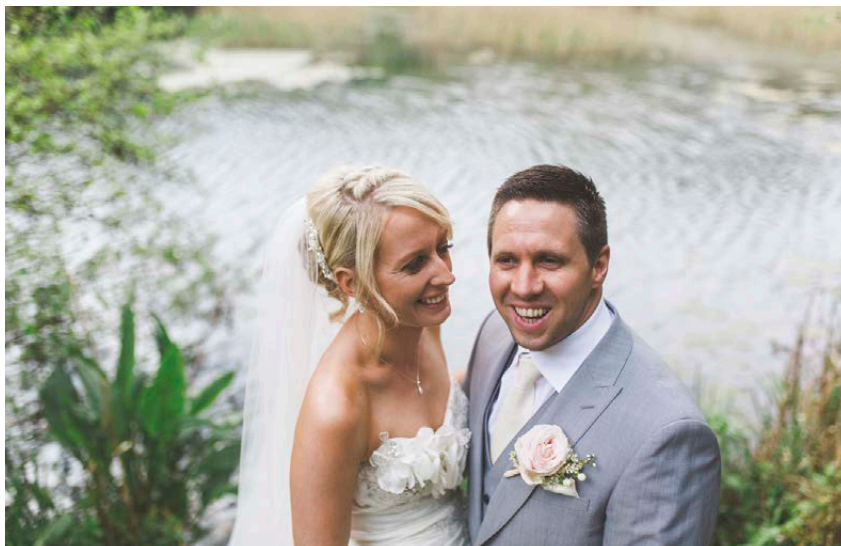
Warren Cooper Photography
Tel: 07944 314556
Email: warren@warrencooperphotography.com
Web: www.warrencooperphotography.com

MILK BOTTLE PHOTOGRAPHY

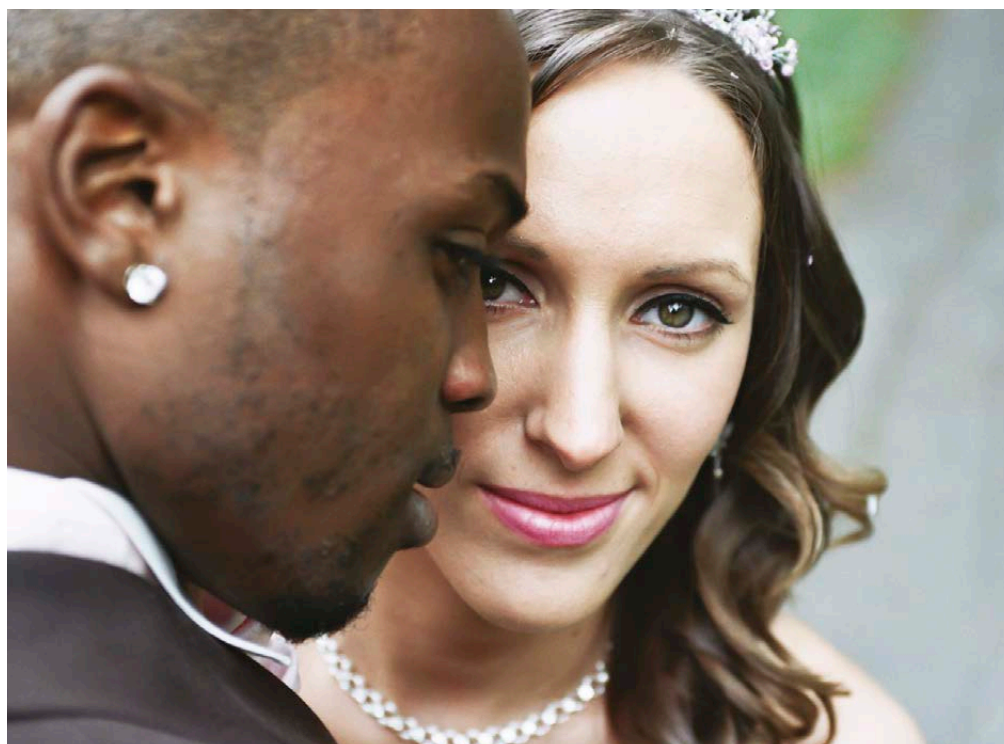
Ben and Tim are brothers who love creatively capturing all the wonderful moments as they happen on your special day.

'The photos are fantastic, better than I ever dreamed of. We had a great day with you guys and I would recommend you first time every time'
Nicky & Roy

Milk Bottle Photography
Ben: 07793 953828
Tim: 07745 032626
Email: us@milkbottlephotography.co.uk
Web: www.milkbottlephotography.co.uk



Milk Bottle Photography



Abraxas Photography & Video

APPROVED LICENSED PREMISES

Please note that with reference to capacity, 'seats' refers to the maximum capacity for each venue room, seated or not. This includes the couple, witnesses, two registration personnel, guests, photographers, videographers etc.

ASTRAL PARK SPORTS & COMMUNITY CENTRE

Tel: 01525 851019
www.astralpark.co.uk
Astral Room: 183 seats
Sports Room: 40 seats

BEADLOW MANOR COUNTRY CLUB

Tel: 01525 860800
www.beadlowmanor.co.uk
Manhattan Suite: 160 seats
Suite 6 : 110 seats

BELLOWS MILL

Tel: 01525 220548
www.bellowsmill.co.uk
The Barn: 80 seats
Meeting Room: 20 seats
Kingfisher Suite: 6 seats

CLOPHILL ECO LODGES

Tel: 07935 911207
www.clophillecolodges.org.uk
The Nest: 50 seats
Barn Owl Room: 10 seats

THE CONSERVATORY AT THE WALLED GARDEN

Tel: 01582 459216
www.lutonhoo-walledgarden.co.uk
The Conservatory: 400 seats
The Shooting Lodge: 50 seats

EVERSHOLT VILLAGE HALL

Tel: 01525 280410
Mob: 07746 243616
www.eversholt-hall.co.uk
Main Hall: 100 seats
West Gallery: 50 seats

FIVE BELLS

Tel: 01525 210224
www.fivebellsstanbridge.co.uk
Restaurant: 100 seats
Lounge: 50 seats

GARDEN COURT - SANDY

Tel: 01767 692220
www.gardencourtsandy.co.uk
Ballroom: 160 seats
Bedford Suite: 60 seats

HALLMARK HOTEL FLITWICK MANOR

Tel: 01525 712242
www.hallmarkhotels.co.uk
Brooks Room: 60 seats
The Music Room: 60 seats
Morning Room: 35 seats
Library: 10 seats

HIGHLANDS FARM

Tel: 01234 744200
The Orangery: 53

LEIGHTON BUZZARD GOLF CLUB

Tel: 01525 244800
www.lbgc.co.uk
Olive Wood Room: 66 seats
Maurice Leslie Room: 20 seats

LUTON HOO HOTEL, GOLF AND SPA

Tel: 01582 734437
www.lutonhoo.co.uk/wedding-venue-bedfordshire
The Sitting Room: 90 seats
The Lounge: 210 seats
The Library: 90 seats
The Pushkin Room: 20 seats
The Churchill Room: 50 seats
The Faberge Room: 130 seats
The Capability Brown Room: 60 seats
The Robert Adam Suite: 120 seats
Lea/Roding Suite: 390 seats
Ravensbourne Suite: 340 seats
Bayford Suite: 100 seats
Cobbins: 160 seats

MITCHELL HALL, CRANFIELD UNIVERSITY

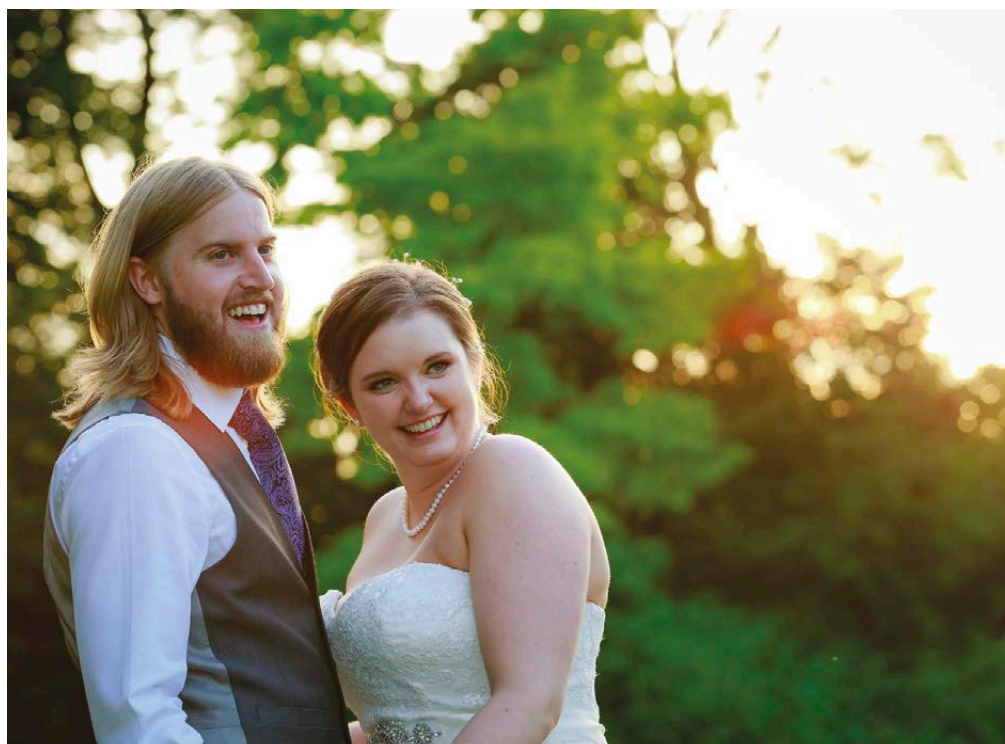
Tel: 01234 754885
www.venuecranfield.co.uk/weddings
Lord Kings Norton Room: 80 seats
Cardington Suite: 110 seats

MOORE PLACE HOTEL

Tel: 01908 282000
www.bwmooreplace.co.uk
The Greenhouse 75 seats
The Woburn Suite: 60 seats
The Buckingham Room: 20 seats



Warren Cooper Photography



Warren Cooper Photography

MORETEYNE MANOR

Tel: 01234 767003
www.moreteynemanor.co.uk
 Restaurant: 50 seats
 Mulberry Room: 80 seats

OLD PALACE LODGE HOTEL

Tel: 01582 662201
www.oldpalacelodge.com
 Henry's Restaurant: 110 seats
 Catherine Suite: 50 seats
 King Henry Room: 25 seats

SHORTMEAD HOUSE

Tel: 01767 313663
www.shortmead.com
 The Stables: 85 seats
 The Thatch: 120 seats
 Regency Room: 26 seats

SWISS GARDEN

Tel: 01767 627666
www.shuttleworth.org/weddings
 Swiss Cottage: 24 seats
 The Grotto and Fernery: 24 seats

THE FOREST CENTRE

Tel: 01234 767037
www.marstonvale.org/weddings
 The Grange: 120 seats
 The Rectory: 100 seats
 The Folly: 50 seats
 Sollars Study: 40 seats

THE HOUSE

Tel: 01767 627917
www.shuttleworth.org/weddings
 The Saloon: 120 seats
 The Billiard Room: 84 seats
 The Morning Room: 74 seats
 The Drawing Room: 64 seats
 The Summer House: 34 seats
 The Garden Suite: 240 seats

THE RUFUS CENTRE

Tel: 01525 631905
www.therufuscentre.co.uk
 Lockyer Suite: 210 seats
 Davis Suite: 75 seats
 Moorfield Room: 35 seats

THE WOBURN HOTEL

Tel: 01525 290441
www.thewoburnhotel.co.uk/weddings
 Covent Garden: 40 seats
 Canaletto Suite: 65 seats

TILSWORTH GOLF CENTRE

Tel: 01525 210722
www.tilsworthgolf.co.uk
 Terrace Room: 150 seats
 Stanbridge Suite: 100 seats

WOBURN ABBEY

Tel: 01525 292172
www.woburnweddings.co.uk
 Sculpture Gallery: 290 seats
 Lantern Room: 70 seats

WOBURN COFFEE HOUSE

Tel: 01525 290050
www.woburncoffeehouse.co.uk
 The Orangery: 52 seats
 The Snug: 12

WOBURN SAFARI PARK

Tel: 01525 292106
www.woburnsafari.co.uk/your-experience/weddings
 Safari Lodge: 105 seats
 Veranda: 95 seats

WREST PARK

Tel: 01525 863704
www.english-heritage.org.uk/visit/places/wrest-park
 Drawing Room: 60 seats
 Library: 100 seats
 Dining Room: 60 seats
 Orangery: 170 seats

Central Bedfordshire Registration Service would like to thank Abraxas Photography & Video, Milk Bottle Photography, Warren Cooper Photography and LinaandTom.com for their kind permission to use their work throughout the guide.

Front Cover: Milk Bottle Photography

Back Cover: Milk Bottle Photography



Central Bedfordshire Register Office
The Court House,
Woburn Street,
Amphill MK45 2HX.

EMAIL: life.events@centralbedfordshire.gov.uk

WEB: www.centralbedfordshire.gov.uk

TEL: 0300 300 8089

