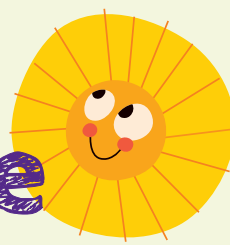


Are you eligible for 30 hours free childcare?



Central
Bedfordshire

great
prospects

Eligibility Criteria

- Is your child age 3 or 4?
- Both parents are working or one parent working in lone parent families. This is defined as earning the equivalent of 16 hours per week on national minimum living wage
- Earnings are under £100,000 each.

You could still be eligible if:

- Both parents are working and in receipt of tax credits/universal credit.
- Both parents are employed but one or both are temporarily away from the workplace.
- Maternity/paternity leave.
- Receiving statutory sick pay.
- Receipt of carers allowance.
- One parent is disabled.



Parent means a person who has parental responsibility for the child.

In cases where a parent has remarried or is living with a new partner, the step parent must also meet the earning threshold.

You can use the funding during term time or stretch it across the whole year.

You can split the offer between two early year's providers, including childminders.

If you meet the above criteria, please contact
www.childcarechoices.gov.uk

You will be issued with a unique code to take to an early years provider who offers the extra hours.

Childcare
Choices