

# Appendix

## Community Plan

Covering the parishes of Chalgrave,  
Chalton, Harlington, Sundon, Tingrith,  
Toddington, Westoning

Community Area 14

# This Community Says...



# Appendix -Feedback Form

## Local character

**What we have we love. Our history, countryside and communities. We need to build, with care to enhance what we have.**

NO ISSUES

Please select **one** type of Local Character from the list below that you would most like to see protected or improvements made within your local area:

- A.  Built Heritage (e.g. ancient monuments, old buildings, memorials)
- B.  Landscape Heritage (e.g. historic parks, protected landscapes)
- C.  Open space natural (e.g. countryside, nature reserves, viewpoints)
- D.  Open space man-made (e.g. parks, common land, village green)
- E.  No improvements

With your chosen type of Local Character, please pin-point **one** specific place on the map table using your **red** sticker where you think there is an opportunity. Please expand below on what you would like to see at this location:

## Transport

**How do we get around? With more of us on our cycleways, roads, rail. How do we improve & maintain our transport links?**

NO ISSUES

Please select **one** mode of travel from the list below that you would most like to see improvements made within your local area:

- A.  Vehicular
- B.  Bus
- C.  Train
- D.  Cycle
- E.  On foot

With your chosen type of Transport from above, please pin-point **one** specific place on the map table using your **pink** sticker where you think there is an opportunity. Please expand below on what you would like to see at this location:

## Jobs and Business

**Where will everyone work? Supporting local businesses to grow & attracting new business. We need to create jobs for all.**

NO ISSUES

Please select **one** type of Business from the list below that you would most like to see investment in to improve business or jobs in your local area:

- A.  Industrial parks
- B.  Business parks
- C.  High street development
- D.  Local retail units
- E.  Small-start-up office centres (innovation hubs)

With your chosen type of Business from above, please pin-point **one** specific place on the map table using your **lime sticker** where you think there is an opportunity. Please expand below on what you would like to see at this location:

## Environment

**Our environment is important. It influences how & what we create.  
We need quality development.**

NO ISSUES

Please select **one** of the Environment types from the list below that you consider the most valuable attribute to look after for the future within your local area:

- A.  Renewable energy
- B.  Pollution (Air)
- C.  Pollution (Noise)
- D.  Open Space - wildlife habitats
- E.  Flood risk

With your chosen type of environmental issue from above, please pin-point **one** specific place on the map table using your **green** sticker where you think there is an opportunity. Please expand below on what you would like to see at this location:

## Homes

**Homes for every stage of life. A house is not a home until it's lived in. We all need a home we're proud of.**

NO ISSUES

Please select **one** of the types of Homes from the list below that you consider are needed within your local area:

- A.  Older generation (downsizing/sheltered)
- B.  Single living (lifestyle/separation)
- C.  New starter homes
- D.  Family homes
- E.  Affordable homes

With your chosen type of Home from above, please pin-point **one** specific place on the map table using your **purple sticker** where you think there is an opportunity. Please expand below on what you would like to see at this location:

## Growth & Infrastructure

**Where to place homes & services. Supporting market towns, villages & new settlements.  
We need to plan places to grow communities.**

NO ISSUES

Please select **one** Infrastructure facility from the list below that you consider is most needed in your local area:

- A.  Healthcare
- B.  Schools
- C.  Retail
- D.  Community Centres
- E.  Leisure facility (leisure centre, play areas etc.)
- F.  Utilities improvements (telecoms/electricity/gas/foul treatment)

With your chosen type of Infrastructure from above, please pin-point **one** specific place on the map table using your **orange sticker** where you think there is an opportunity. Please expand below on what you would like to see at this location:

# Appendix - Feedback Form Summary

The following data for Community Area 14 was collected at the event held on Thursday 23rd November 2016 at Guide Hall, Toddington Guiding HQ from 2:30pm until 7:30pm using questions from the feedback form illustrated on the previous page.

Feedback Form Summary						
Response	What would you most like to see protected or improvements made?	Local Character	What would you most like to see improvements made in?	Transport	Would most like to see investment in to improve business or jobs?	Jobs & Business
No Response		6		10		26
A	Built Heritage (e.g. ancient monuments, old buildings, memorials)	16	Vehicular	21.5	Industrial parks	1
B	Landscape Heritage (e.g. historic parks, protected landscapes)	5	Bus	18	Business parks	4
C	Open space natural (e.g. countryside, nature reserves, viewpoints)	38	Train	7	High street development	16
D	Open space man-made (e.g. parks, common land, village green)	9	Cycle	13	Local retail units	7
E	No improvements	2	On foot	5.5	Small-start-up office centres (innovation hubs)	16
F	No F question on this theme	0	No F question on this theme	0	No F question on this theme	0
Nothing Recorded		0		1		6
<b>Total</b>		<b>76</b>		<b>76</b>		<b>76</b>

What do you consider the most valuable attribute to look after for the future?	Environment	Which you consider are needed the most?	Homes	Which you consider are needed the most?	Growth & Infrastructure
	6		13		10
Renewable energy	6	Older generation (downsizing/sheltered)	8	Healthcare	11
Pollution (Air)	6	Single living (lifestyle/separation)	2	Schools	6
Pollution (Noise)	10	New starter homes	8.3	Retail	6
Open Space - wildlife habitats	46	Family homes	18.3	Community Centres	5
Flood risk	2	Affordable homes	18.3	Leisure facility (leisure centre, play areas etc.)	7
No F question on this theme	0	No F question on this theme	0	Utilities improvements (telecoms/electricity/gas/foul treatment)	29
	0		8		2
	76		76		76

## Note

The public were instructed to only tick one category for each theme. Where an individual ticked more than one category, their choices are divided evenly across the categories.

## Local Character

**Question:** With your chosen type of Local Character, please pin-point **one** specific place on the map table using your **red** sticker where you think there is an opportunity. Please expand below on what you would like to see at this location:

I feel it important to “conserve” and use conservation and NOT preservation – the village and area should expand to enable a sustainable community.

Harlington playground.

Keeping clear boundary between Tingrith and Eversholt.

Protection of open countryside.

I think it’s imperative not to lose any more of our countryside in this area of Beds.

The local church in Westoning has approved plans for a Parish Room which would benefit the whole village.

The village of Westoning has a number of “institutions” represented by buildings that need to be maintained, improved and protected, whether or not there is development. The church is restricted for facilities and the school is in desperate need of space – buildings and recreational.

Retaining an open rural feel to Tingrith/Eversholt area.

Continued support for Parish Room in Westoning. Consultation over any proposed plan please.

Dropshort Marsh NR extended and protected from close development.

Footpaths to pleasant green areas with a natural feel.

Protect existing built heritage and ensure new development is high quality design.

Screening M1 services.

Screening for Toddington Services from Toddington and Harlington. Plantation of large trees not twigs.

War memorial – Upper Sundon.

The church in Westoning and the immediate surrounding area being preserved.

Amphill possibly not included in this survey.

Smaller settlements separated by open countryside. Enhance the biodiversity value by connected trees/hedges – corridors protect open countryside and views as a key characteristic of Central Beds (i.e. not one huge building site).  
**GREEN BELT PROTECTION.**

Enhancement of Sundon Hills C Park – better facilities and access links.

Tingrith has open spaces within it, as well as around, which are part of the village’s attraction as well as being havens for wildlife – green belt and conservation area.

Upgrade access and improve public visits.

Maintenance of rural landscape and pathways. Also maintenance and support for 13th century church which attracts tourists.

Continuing preservation of countryside, footpaths around the village.

Village Green, Tingrith.

Tree screening around Toddington services and full cut-off lighting to reduce sky-glow.

There is a need for additional sports field facilities in Westoning – especially junior football pitches.

Parish Church and Green.

I would like the recreation ground to remain as the only sizeable green space in the village. Further football pitches could be located on the edge of the village.

I just love the openness of our surroundings.

I would like to see this area added to the Conservation Area to preserve the character of Tingrith.

More space for sports in Westoning, e.g. youth football teams now have to go outside of the village to play.

We have a Grade I church which needs looking after.

No houses expanding from Houghton Regis towards Hill Farm.

Preservation of the view south from Hill Farm in Wingfield is important to me and my family and friends.

Church Tingrith.

Open spaces and countryside to be kept as such. Tingrith does not need more houses. It is not an area that will have low cost homes as it has high value small properties at present and this would not change.

No more building, use what we have!! Lots of empty houses though full schools, busy roads and poor infrastructure.

We have major loss of Green Belt, so we need to retain the remaining bits, to protect the villages from being engulfed and merged with larger urban areas.

I would love to see this area kept clear of any housing developments. It is a beautiful area and I often take my children to see the horses and be closer to the countryside of their village.

Footpaths and bridleways more accurately marked to encourage people to use them.

Re-open Bedford Arms pub. Good family space.

Keep the Bedford Arms as a pub.

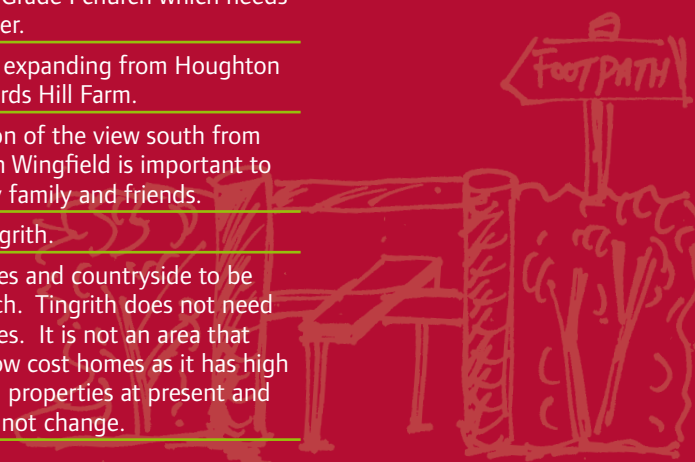
Sundon Quarry – opportunity for enhancement/management in conjunction with development of rail freight interchange on adjacent agricultural land.

Protecting Conger Hill and improving access.

Enhancing existing local open space and access to it.

This relates to Tingrith and maintaining the character of the village.

Tingrith church to have money invested into.



## However, unacceptable use of language has been omitted.

### Transport

**Question:** With your chosen type of Transport, please pin-point **one** specific place on the map table using your **pink** sticker where you think there is an opportunity. Please expand below on what you would like to see at this location:

Links on foot and by cycle between Harlington and Toddington, Westoning and Toddington, Houghton Regis and Toddington.

Links on foot and by cycle between Harlington and Toddington, Westoning and Toddington, Houghton Regis and Toddington.

Cycle way between Harlington and Toddington/Harlington and Barton.

More car parking on Flitwick and Harlington.

East-west bus service, especially for "older" people, who can no longer drive, but not special services e.g. disabled.

Already a shortage of car parking at Harlington and Flitwick for cars at B.R. stations and the parking is so very expensive.

Access to 5120 coming from Tingrith.

The village of Westoning is "land-locked" as far as safe pathways (and indeed cycle tracks) are concerned - I do not feel it is safe to allow children, even as old as 15, to walk or cycle out of the village to Flitwick or Westoning. Also a bypass would be ideal, but unlikely, and other imaginative solutions could be implemented with a bit of imaginative planning.

There are two transport issues concerning cars: 1. Access from Tingrith to A5120 and 2. Car parking at Harlington Flitwick junctions.

Never been able to use a bus in Westoning - as there is never one when I need it. Do walk Westoning to Flitwick but often have to use the car.

Well provided but need more of them and at weekends to station and airport. More frequent to MK.

More choice of bus routes would be good.

Improve quality of existing roads. Put new developments adjacent to rail stations to encourage more rail use. Improve Harlington rail access and parking.

More frequent service to connect with busway. Route to airport and station.

A cycleway to Harlington Station from Toddington, Tingrith, Chalton and Tebworth - a separate cycleway not a white line painted on an existing road.

Assuming housing may increase in Upper Sundon - more bus schedules for older/non car users.

Improved bus service for Westoning.

Improve cycle network within towns to reduce short journey congestion. Include parking/bike storage at stations.

Less traffic in Toddington.

Creation of a circular route around Toddington, linking footpaths that radiate out - relevant to area all around Toddington.

A roundabout onto the A5120 at the Tingrith/Harlington turn.

Speed control. Restrictions on HGV movements.

Make road safer bridleway between Fancott and M1 J12.

Traffic calming measures. Tingrith is used as a rat run and speeding through village is a major problem and highly dangerous.

Harlington Station is poor quality and under used.

The exit onto the A5120 is extremely dangerous and a roundabout would help alleviate this.

Roundabout at exit from Tingrith and Wood End onto A5120.

Cycle way between Toddington and Harlington along the A5120 and Toddington Road, Harlington.

Roads need better maintenance. Road signs need regular cleaning.

Safe cycle paths between Westoning/Flitwick and Westoning/Harlington to cover both schoolchildren and commuters.

Cycle way linking Toddington with Harlington Station and the schools. If we had a cycle way maybe buses not required!

Enable safe cycling from Westoning to Flitwick, Harlington and beyond but definitely to the stations.

A cycle path between Toddington and Wingfield, Toddington and Tebworth.

Tebworth and Wingfield are very poorly served by buses which are needed by old age pensioners and youngsters.

Tingrith is used as a rat run and with more houses this would create a bigger problem and added dangers.

Speed restriction in Tingrith High Street.

There is currently only 1 minibus that goes through Wingfield and Tebworth and I think this needs improving.

Improve the roads with quality material, repairing the same thing over and over is not sensible.

Better paths and traffic calming.

There is limited bus access in our village.

The bus service is very sparse. It would be great to provide a more frequent service.

Rail links on the main Thames link line.

Safer routes between major towns and surrounding villages to encourage cycle commuting.

Stop large heavy vehicles coming through the village. General traffic speed. Speed bumps especially Luton Road.

Stop lots of big lorries coming through Toddington.

Sundon rail freight interchange - allocate site in new local plan.

Extended footpaths.

Opening up cycle routes to help access the local countryside and improving/widening alleyways and access paths in the village.

Bridleway' junction.

Along the High Street in Toddington.

Limited extra housing in Harlington could help justify the train station.

A bigger station to allow people to use station/train daily.

Traffic calming through Tingrith. No parking on corners (particularly Church Road).

Traffic calming through Tingrith and more managed parking at the bottom of Church Road.



## Jobs & Businesses

**Question:** With your chosen type of Business, please pin-point **one** specific place on the map table using your **lime sticker** where you think there is an opportunity. Please expand below on what you would like to see at this location:

Small local business - not a suitable area for industrial/business parks.

But broadband issues put business people off our area.

Keep the village as a village, make it an attractive place to live, recognising that most people will work outside the village.

Broadband. Better broadband access for home working and home businesses.

Not a personal concern but 'E' suits the character of village of Toddington.

A few more retail outlets would be good, e.g. hardware, butcher.

All needed!!

More and diverse shops in High Street.

I doubt Upper Sundon is 'right' for larger scale business, notwithstanding the freight rail centre.

Lower rentals in Ampthill so shops are used.

Regenerate town centres with small business employment.

Small areas devoted to business use.

Nothing in our village but more opportunities in Toddington.

Tingrith is a pleasant small village and would not be enhanced by retail units, but maybe a small office centre in area adjacent to the main A road would be suitable.

In Toddington adjacent to 5120 near the existing roundabout, i.e. Poplars/ Dingley Dell.

Once link road (A5-M1) open to improve high street parking and street scene.

These are popular.

Need supporting car parking spaces.

Work stations including PCs, printers and meeting rooms.

Toddington High Street.

An increased variety of shops and offices would benefit Toddington and potentially reduce commuting

Bring back the high street. Low taxes makes them competitive.

Dunstable town centre has gone downhill in the last 15 years. Vacancy rate is high, no units large enough to attract decent retailers. No incentives for businesses or shoppers. Car parking charges too high against competing centres. We do not need large warehousing sites providing few jobs per acre.

Ensuring that independent shops are opening rather than more and more chain stores.

Due to motorway access the area is an ideal business start up location.

Opportunity for people to start small businesses with centralised support/common services and low start-up costs.

Sundon rail freight interchange - distribution park.

Adding start up offices anywhere on the Toddington periphery would help local business diversity.

Small office units.

No development in Tingrith.

Don't change Tingrith.



## Environment

**Question:** With your chosen type of environmental issue, please pin-point **one** specific place on the map table using your **green sticker** where you think there is an opportunity. Please expand below on what you would like to see at this location:

Noise from HGV on small roads. Noise from M1 - build a barrier to restrict noise levels from M1. Noise from cars

Flood risk Goswell End/ Westoning Road.

It is very important to maintain open spaces and landscape.

There is ever increasing noise from air traffic, road traffic (of heavy weight traffic in particular on narrow country lanes where there are no footpaths and no escape routes for foot and cycle users).

To me this is the same as local character. The character of this area is all the country spaces and green areas around the villages.

Motorway noise and litter not cleared from rural roads.

Westoning drains remain blocked, not cleared when reported. Some floods in village.

Similar to local character comments.

All important.

Get rid of the sewage pit(?) that emits a terrible smell. Lorry ban in force to combat noise and air pollution.

Protection of the Chiltern AONB and extensions to compensate for proposed building plans.

Not adverse to wind farms or solar farms - within reason. We need renewable energy!

Wildlife habitat in Westoning Church being preserved.

Areas, i.e. church yards, encouraged to consider wildlife and nature in general.

As before - tree cover to improve wildlife habitat, plus reduce flood risk.

Enhanced protection of habitats to S/SW of Toddington - buffering and linking Dropshort Marsh - Fancott Meadows.

Too late to look at motorway pollution (air and noise) in Tingrith.

## However, unacceptable use of language has been omitted.

Reduction in traffic noise.

More solar farms.

Maintain open spaces - used for agricultural purposes with corresponding wildlife.

We have open spaces which need to be maintained.

Maintaining of existing space.

Tree screening and full cut-off lighting across CBC to reduce light pollution.

Clean air is a basic need.

Whilst I understand the need for housing in Central Beds, wildlife areas must be retained as much as possible.

Traffic fumes.

Preservation of local country footpaths is important.

Protect this area.

I would like this to be a protected area.

Westoning village subject to noise from railway and M1 motorway.

Nature reserve opposite Dropshort Farm.

Dropshort Farm preservation is important to me as a local example of wildlife habitats.

Improve conservation within area.

Open spaces not only need to be kept as such for humans but also for local wildlife to survive.

Preservation of green spaces.

There should be more wildlife spaces in the area to maintain the environment.

Burning thatch or tyres on sites makes living near it a nightmare. Also a danger to the motorway.

Protect Green Belt to benefit wildlife and humans alike.

Ensuring that the wildlife in our area stays healthy and happy with decent habitats.

Open spaces maintained.

Road and rail noise to be considered when expanding services on rail and M1.

Lorry ban.

Lorries again.

Sundon Quarry - opportunity for habitat enhancement/ management in conjunction with allocation of Sundon rail freight interchange on adjoining land.

Opening up access to Bunyan's Oak would benefit the whole area.

Strong protection for wildlife areas.

For families to take in wildlife.

Maintain the open space in Tingrith.

## Homes

**Question:** With your chosen type of Home, please pin-point **one** specific place on the map table using your **purple sticker** where you think there is an opportunity. Please expand below on what you would like to see at this location:

Families and family homes promote growth - children grow up and stay local if there are opportunities - families move in if family life is sustainable.

Better cross section within village.

There is a shortage of "single" housing in Harlington.

As little building as possible.

Can't choose - Over time we all need all sorts of housing so more housing close to facilities and transport links to minimise car journeys.

I wouldn't support any development in the village of Tingrith. But there doesn't seem to be a box to tick for that sort of opinion. Is that because we don't have an opinion?

We need some affordable homes for the young couples as they start out.

It would be disappointing if any major development was permitted in Westoning after years of resistance due to "green belt" protection. It is difficult to identify one type of housing, but the nature of the village needs to be maintained and the school, church, shops, pubs, etc. maintained.

We need a mix of all types and we do need to have more lower price homes without destroying the local character.

We need affordable housing for local residents. Not permitted to buy to let. No more 4/5 bedroom houses.

Something for the younger generation.

All houses needed.

I cannot select one, as we need all of the above for the immediate future.

Westoning village needs more starter homes near village centre.

Ensure villages have homes and access so people can stay in community.

Not enough homes for new starters in Harlington/Westoning.



## Homes continued



More homes required for all close to village centre.

Housing is very expensive and unattainable for many but new builds are also out of character for current housing stock in our area.

Goswell End Road Harlington

A few starter homes, built inside the village, would encourage younger buyers and so maintain the future of the village.

Tingrith village is mostly larger houses. We need to alter the demographic – smaller houses for older people and starter homes for young couples.

With the massive development in Houghton Regis there is no great need in Toddington.

Any new housing development MUST include new starter homes for local people.

Will release larger homes. Need affordable homes to maintain a balanced community.

I could have ticked all of these as I feel we need a whole range of different housing types.

Tingrith is a small village and to build houses in the high street would have a huge negative impact against any new houses in open spaces.

Prefer no new houses in Tingrith apart from converted buildings that are existing. If development prefer marked area as central to village.

Westoning needs to encourage younger families to buy homes in the village. Very little development of new houses over the last 10 years.

Village needs an influx of new life but needs to be affordable.

Our village is short of homes of this size.

We need affordable homes for the younger generation so that they can stay in the area if they wish to.

Without affordable housing the younger generation will find it difficult to stay in the place they grew up.

Minimal development without taking more than fair share of requirement.

I don't think any new homes are needed in Tingrith.

There should be more affordable or new homes for families in the area as housing can be expensive when couples are first buying their homes.

This is an area that's remote with few facilities. Families make a community that what generates life within an area.

School area near family homes.

A mix of affordable homes or private homes required. We do not need 4+ bedrooms, mainly 2-3 bed homes to cater for local needs.

I think there are many different homes available in the area.

Harlington and Flitwick both require more affordable housing rather than more rural locations due to the transport networks in those areas.

I would not like to see development in Tingrith. It would be nice to protect one traditional country village.

We would not favour building in our village.

It is important to build new small homes to allow young couples to get on the local housing ladder.

Harlington as it has a railway station.

Lack of housing in Harlington is making this village unaffordable for many.

The need for family homes for the average family to afford.

This relates to Toddington.

None required, BUT if there were any I would like to see houses which are in keeping with the heritage of Tingrith and at the prestige level of housing.

## Growth & Infrastructure

**Question:** With your chosen type of Infrastructure, please pin-point **one** specific place on the map table using your **orange sticker** where you think there is an opportunity. Please expand below on what you would like to see at this location:

All need improvement. Utilities at breaking point already.

More needed to serve existing and new residents.

There is a dire need of improved utilities in Harlington, already overstretched!

Better drainage.  
Better broadband provision.

But of course keep a balance between population and required facilities and care.

The school needs support to be sustained into the future. Along with the church it provides a heart to the village. School needs better facilities to attract numbers. This links to affordable housing.

Please listen to what people who understand the need of the school. Believe and support them in their attempts to secure its future.

Access to community facilities locally within the village either an additional area to church or separate small facility.

Local surgeries can hardly cope now. Particularly Flitwick where you wait ages for an appointment and never see the same doctor. NEW BURIAL SITE? - WESTONING.

A butchers and restaurant and a central PO!

As for jobs and business section.

All required to support 20,000+ new houses. Larger developments are better at providing new facilities.

Surgery needs expanding to cope with extra numbers. Additional staff for example, blood tests, etc.

An increase in the local population will put extra stress on Toddington Medical Centre - which is struggling with present workload.

If Upper Sundon is to increase, perhaps a more local school rather than travelling to Harlington.

## However, unacceptable use of language has been omitted.

It would be great if there was a doctors surgery in Westoning.

Gas

VERY poor broadband (improvements not due until 2019). No gas in parish at all. Lots of power cuts despite prolific overhead power cables across countryside.

Not put a sticker on but improving access to leisure facilities outside of area as provision inside is limited.

Improve broadband speed.  
Access to gas.

Better more comprehensive care.

Appalling internet provision - no cable infrastructure. No gas in the village.

Telecom services would need to be improved; we are still on overhead wires. There is no gas in the village, so not a lot of choices for residents, re: power.

Tingrith needs much faster broadband and a gas supply. The gas grid is 300 yards from the village centre.

Off road motorcycle facility.

There is a need for a new village hall in Westoning to replace the present one which is 170 years old and has a considerable upkeep cost.

Development of existing use.

The present village hall in Westoning is over 170 years old. The roof leaks, insulation and ventilation is poor, the toilets and kitchen need updating and the layout is restrictive as it was built as a school. A new village hall would be a great asset for the village.

Better broadband.

More shops.

Westoning Lower School is short of secure space for the children. Play times are synchronised in an open area where the public have easy access.

A faster broadband would be helpful.  
Gas brought to village.

Broadband needs improvement and the village needs gas.

Much improved broadband needed.  
Wingfield.

Broadband service needs major improvement in our parish.

Gas would be a bonus. Improved telecoms would be a bonus.

Drains cleared in Church Road.

Broadband improvement.

More play areas for children.

Better schools for all the new homes.

Effective and viable town centres are a key attracter for retailer, businesses and residents. Out of town, however, harms the High Street and should be controlled. Town centres of Dunstable and Houghton Regis are below standard for what they should offer.

Internet coverage is poor.

Loss of youth clubs, social clubs, etc. is encouraging more individual and less community behaviour.

Broadband.

It would be great to see the land at Crowbosh Farm opened up for playing fields.

By the train station so people can go before/after work.

Tingrith needs gas and improved telecoms/broadband.

Broadband speeds poor but liveable.



# Appendix - Supplementary Questions on Feedback Form

## Thank you for responding to this consultation.

Your views will help us to shape the Community Plan that will inform the Local Plan, influence development decisions and help direct investment where it is needed. There will also be other opportunities to comment on the Local Plan as it is developed. There will be an opportunity to express your views in more detail at the next stage.

### Please answer the following questions:

Gender:  Male  Female Age range:  Under 18  18-25  26-35  36-45  46-64  65+

What postcode do you live at? \_\_\_\_\_

Which town/village do you shop at most often? \_\_\_\_\_

I am a local resident  I am a Town or Parish Councillor for \_\_\_\_\_

I am an organisation representative please state \_\_\_\_\_

Which town/village do you work in (if applicable)? \_\_\_\_\_

Do you consider yourself to be disabled?  Yes  No

To which of these groups do you consider you belong?  White British  Black or Black British  
 Asian or Asian British  Mixed  Chinese  Other Ethnic group (please write in) \_\_\_\_\_

### Would you like to be informed of the arrival of the Consultation Draft of the Community Plan for your area? We can notify you of its publication.

Be assured that your personal details will not be published in any report or passed to a third party.

By  post or  email

Name: \_\_\_\_\_

Address \_\_\_\_\_

Email: \_\_\_\_\_

Please tick if you would like to be kept informed of Local Plan Updates.

After completing this feedback form please place in box at front door.

Or post back to us at Local Plans, Priory House, Monks Walk, Chicksands, Shefford, Bedfordshire SG17 5TQ

**Data Protection Act 1998** Please note that your personal details supplied on this form will be held and/or computerised by Central Bedfordshire Council for the purpose of the Local Plan. The information collected may be disclosed to officers and members of the Council and its' partners involved in this consultation. Summarised information from the forms may be published, but no individual details will be disclosed under these circumstances. **Your personal details will be safeguarded and will not be divulged to any other individuals or organisations for any other purposes.**

Sign up for email updates ...

 [www.centralbedfordshire.gov.uk/localplanupdates](http://www.centralbedfordshire.gov.uk/localplanupdates)

More information on the Local Plan can be found here...

 [www.centralbedfordshire.gov.uk/localplan](http://www.centralbedfordshire.gov.uk/localplan)

# Appendix – Supplementary Questions Summary

## Public Consultation Northhill Attendees Record

Response	Gender	Age	Res/Cllr/Org	Disabled?	Ethnic Group
Response	Male: 37 (52.9%)	Under18: 2 (2.9%)	Resident: 64 (90.1%)	Disabled-Y: 0 (0.0%)	White British: 69 (98.6%)
	Female: 33 (47.1%)	18-25: 0 (0.0%)	Councillor: 6 (8.5%)	Disabled-N: 72 (0.0%)	Black or Black British: 0 (0.0%)
	Unknown: 0 (0.0%)	26-35: 3 (4.4%)	Organisation: 7 (9.9%)		Asian or Asian British: 0 (0.0%)
		36-45: 10 (14.7%)			Mixed: 1 (1.4%)
		46-64: 26 (38.2%)			Chinese: 0 (0.0%)
		65+: 27 (39.7%)			Other Ethnic Group: 0 (0.0%)
Nothing Recorded	6	8	5	4	6
<b>Total</b>	76	76	76	76	76

Homes



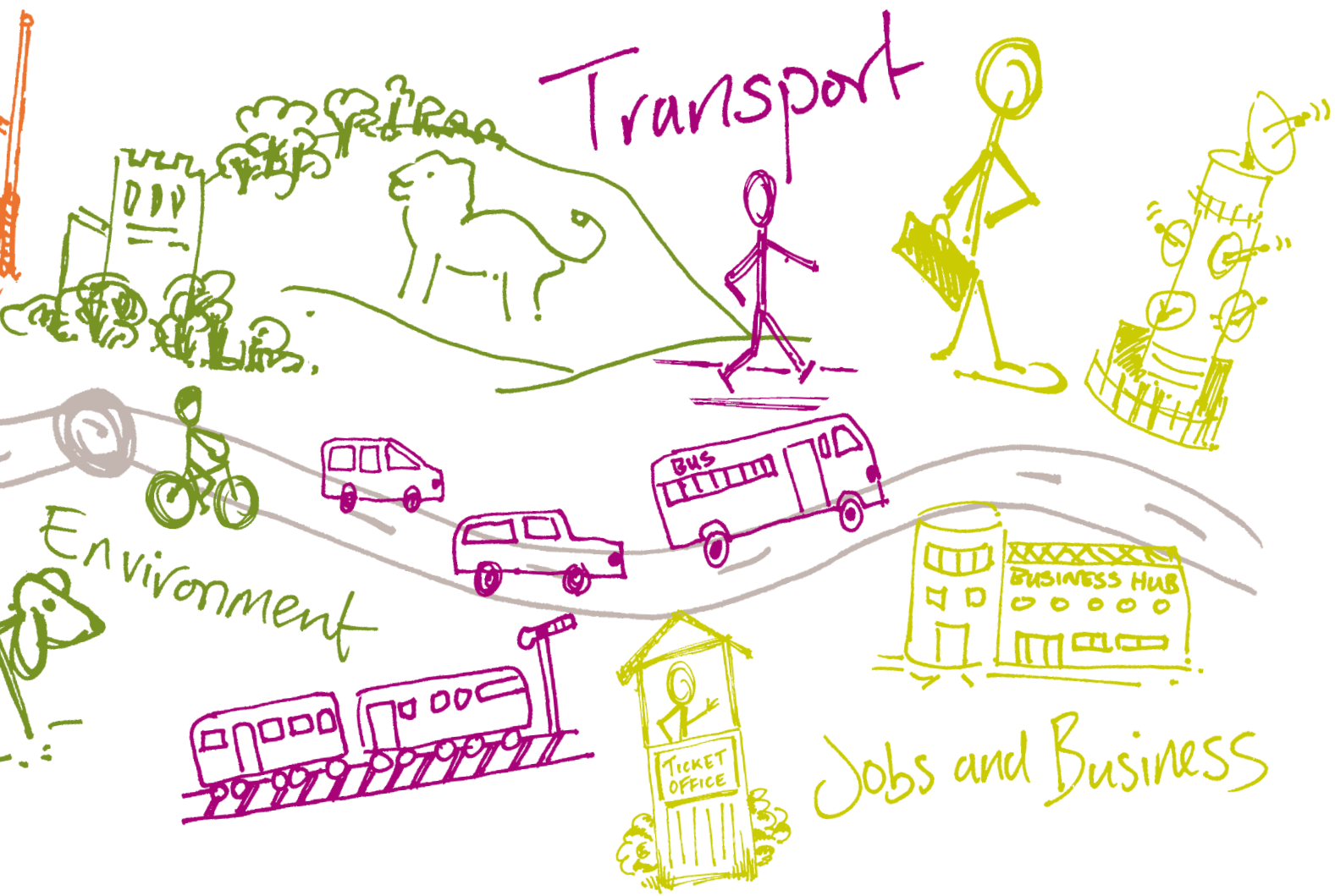
GROWTH & Infrastructure



Local character

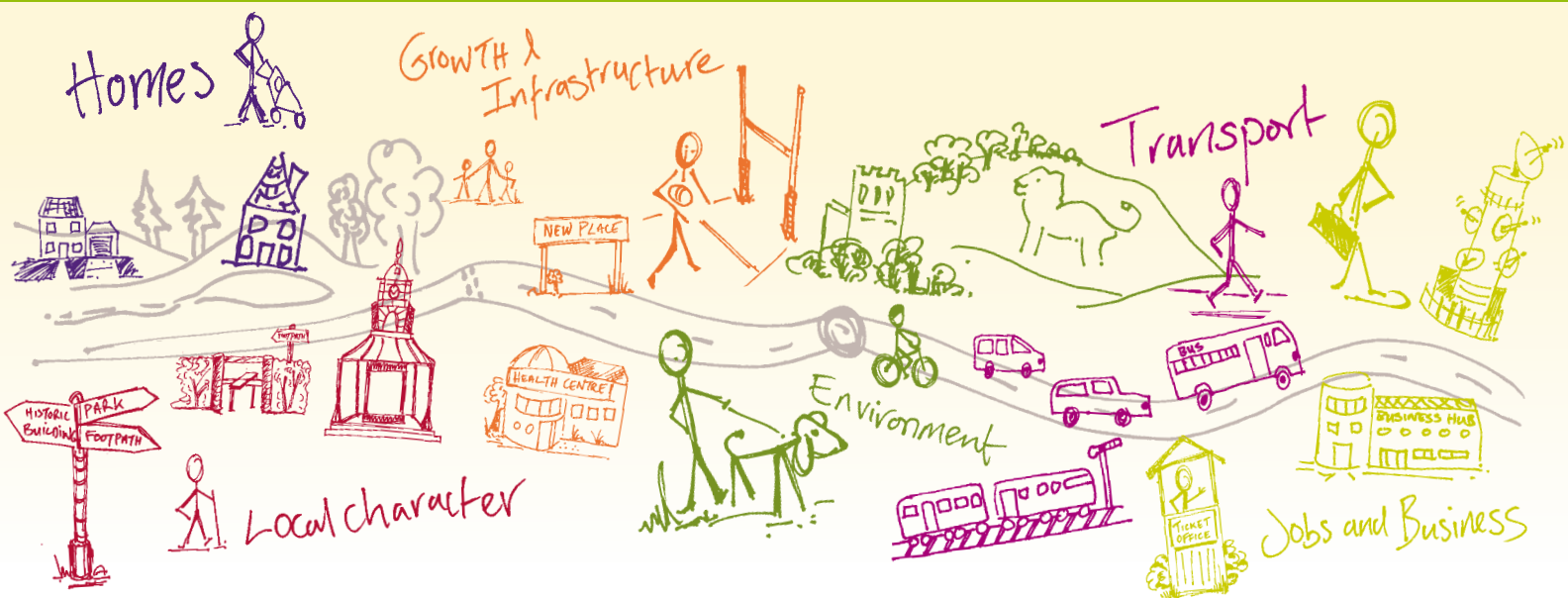
**A great place to live and work.**







# Shaping where you live 2035



## What happens next?

Community Planning is a continuing process and this Community Plan, which collates all the information gathered at the event, is the first time this type of information has been collected. There will be a series of actions arising from the Community Plan which are likely to influence or shape planning policy in the Local Plan, decisions on planning applications, and decisions on where money arising from development should be spent. Central Bedfordshire Council will seek to work in partnership with organisations including Town and Parish Councils, developers and other agencies to deliver on these actions.

## For more info on community planning ...

[www.centralbedfordshire.gov.uk/community-planning](http://www.centralbedfordshire.gov.uk/community-planning)

## More information on the Local Plan can be found here...

[www.centralbedfordshire.gov.uk/localplan](http://www.centralbedfordshire.gov.uk/localplan)

**Disclaimer** Central Bedfordshire Council is the statutory Planning Authority for the area and therefore is bound by legislation and must have regard to government guidance on planning matters.

Community Plan produced in consultation with Central Bedfordshire Council supported by [www.lda-design.co.uk](http://www.lda-design.co.uk)

### This document contains:

Contains OS data © Crown copyright and database right 2016  
Contains Royal Mail data © Royal Mail copyright and Database right 2016  
Contains National Statistics data © Crown copyright and database right 2016

Central Bedfordshire Council:  
© Crown Copyright and database right. 2016 Ordnance Survey 100049029

Central  
Bedfordshire

A great place to live and work.